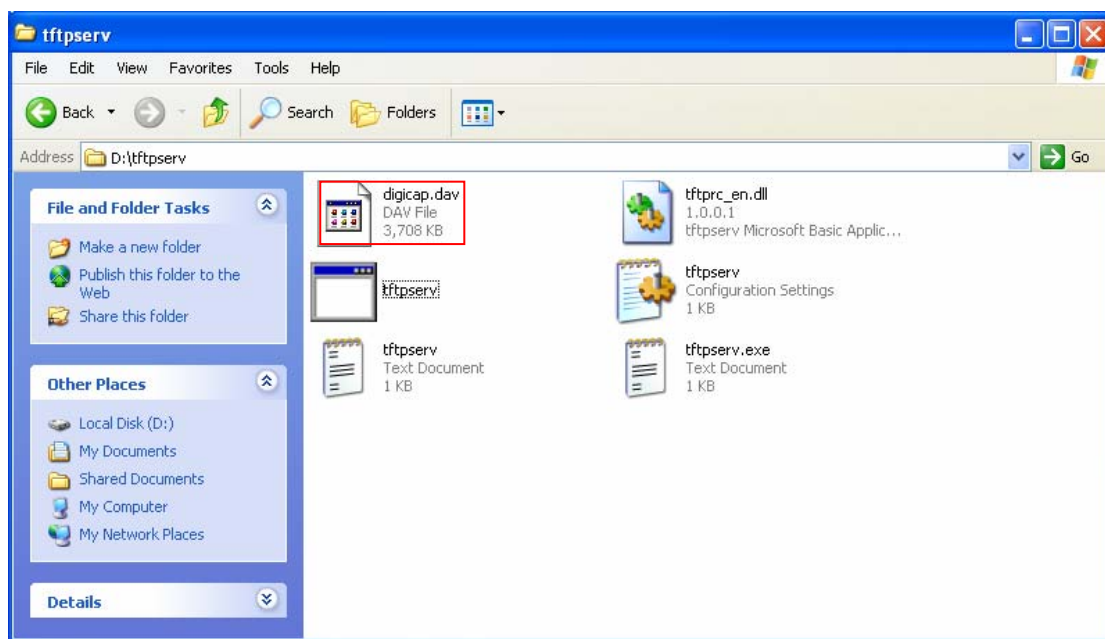


# Hikvision Network camera firmware update

Step 1. Use the direct cable to connect the PC with the Network camera.

Step 2. Modify the PC IP to 192.0.0.128, mask IP: 255.255.255.0

Step 3. Put the firmware to the same directory with the TFTP Server. Show as the picture below.



Step 4. Power on the Network camera, and you will find that the network camera will connect to the PC itself and finish the updating step by step by itself. After the TFTP Server shows "system update completed", show as the picture below. The network camera will reboot itself and you can access it some seconds later.

