

1 Note

Thank you very much for you buy our products, if you have any questions or needs, please contact us.

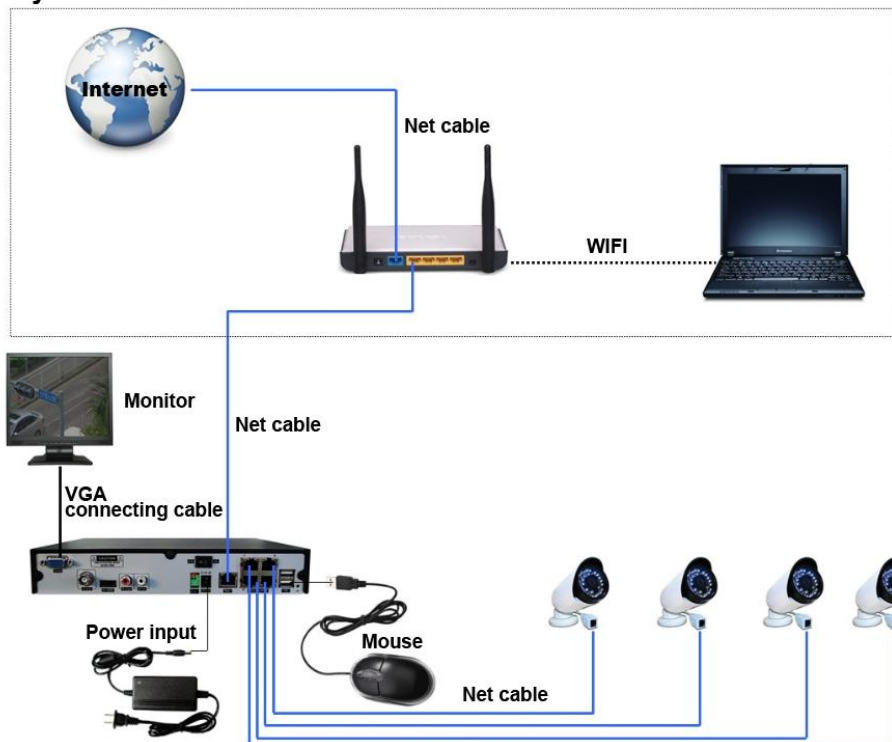
This user manual may contain inaccurate data or printing error. Updates to the manual or products themselves will occur without further notification. Contact the customer service department when you have any question or want newest software and file.

This user manual is for reference only, subject to available products.

2 Precautions

1. Do not spill liquid of any kind on device.
2. Do not block any ventilation openings. Install under the manufacturer's instructions.
3. Check the power supply voltage, prevent voltage does not match the cause damage to the device.
4. NVR should work in technical indicators allow range of temperature and humidity.
5. Require a solid mounting surface for installation.
6. NVR should work on proper temperature and humidity. Do not install NVR in humid, dusty or smoky environment.
7. Improper battery replacement will be explosion hazard, do not suggest user to replace the battery; If you need change, can only use the same type or equivalent type to replace batteries, do not attempt to open or repair the battery.
8. NVR installation shall conform to the specifications, you can refer to the relevant national or local standards

System installation



3 Install HDD

Note: Please use the special equipment manufacturers recommend NVR SATA HDD

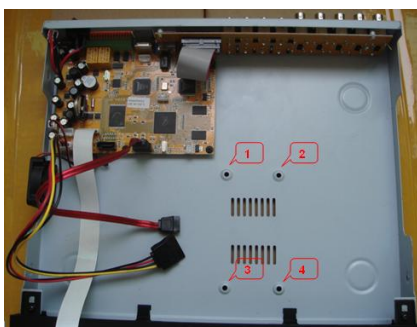
Preparation

Prepare a Cross Screwdriver

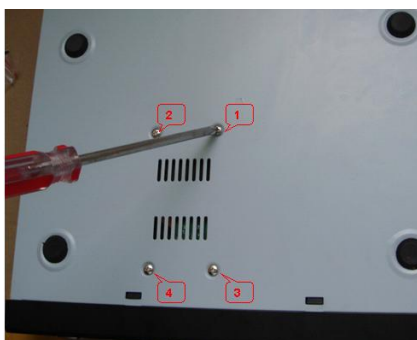
 **Note: HDD quantity by each model's specifications shall be final, HDD capacity up to 64 TB.**

Steps

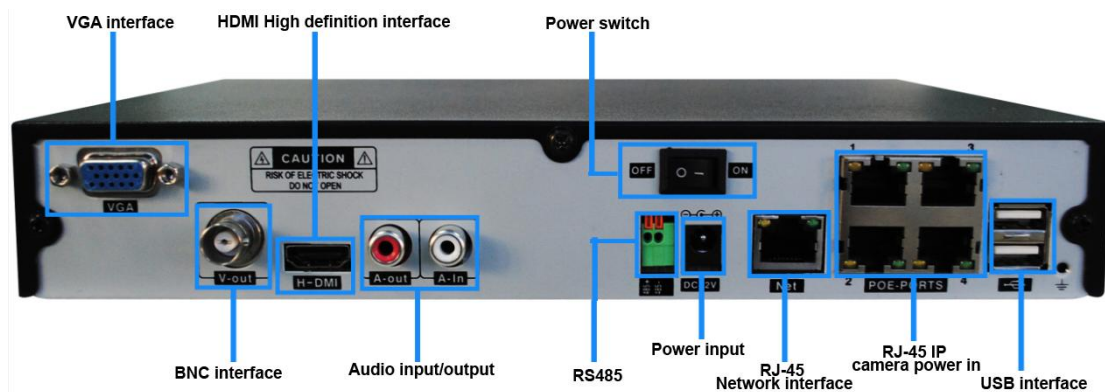
1. Boot box side screw, open the chassis plate.
2. Use screws to fix the hard disk on the bottom bracket or fix the hard disk on the hard drive screw holes position, connect the power cable and data cable of the hard disk.



3. Cover chassis plate, plate with screws



4 Rear panel interface description



5 Login

Make sure the power supply is match to the NVR, and check the NVR Grounding terminal is good. Connect the monitor before turn on the power.

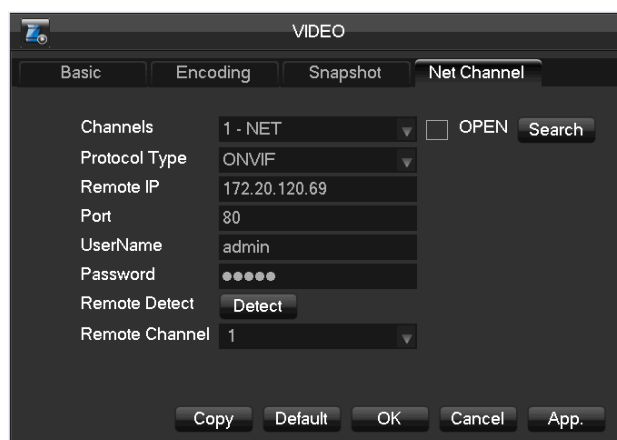
If the indicator light on front panel not work, please connect the power supply, turn on the power button on the rear panel, then the device will start. When the NVR is working, the power LED is shown red. Monitor shown logo and NVR start working.

Default username: admin, password: (empty) no password.

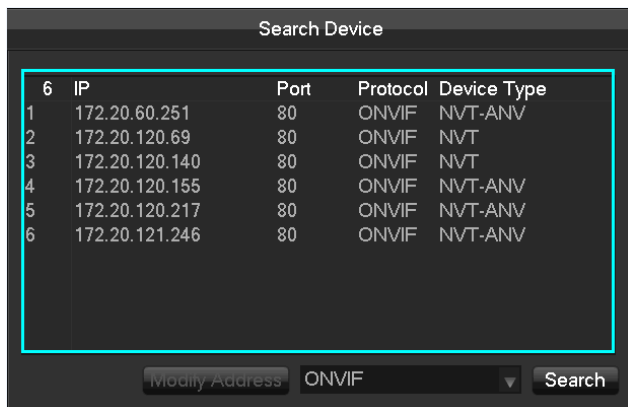
6 IP Camera Manage

Before setup the IP camera information in one of the channels, please make sure the IP camera connect into same local network.

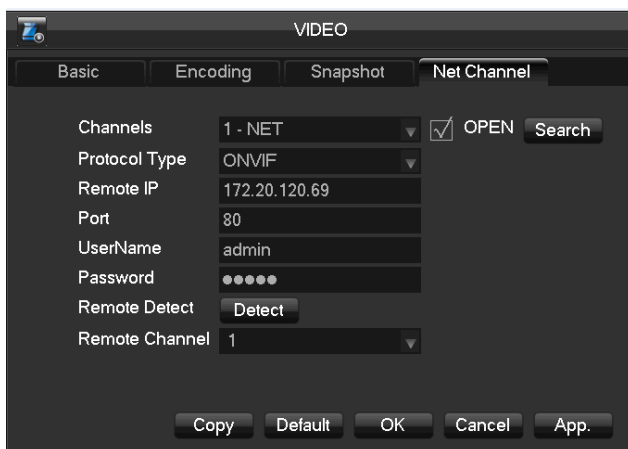
1. Enter **【Main menu】** - **【VIDEO】** - **【Net Channel】** , choose **【Open】**



2. Click **【Search】** to open **【Search Device】** window, use the protocol IPC to search the device list.



3. Double-click the device be searched, it will back to the net channel setting interface and the the device will be added auto, the click OK.



4. Return to the live view channel, you can see the live video.

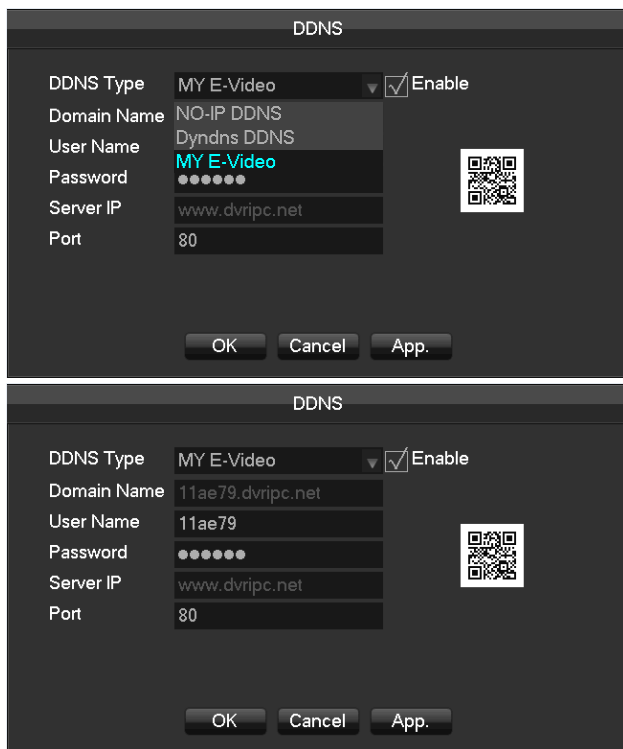


7 Remote login

My E-video service is a DDNS service of DVR, NVR, DVS and IP camera in our company. It is use to visit device through internet when the network without fix IP address.

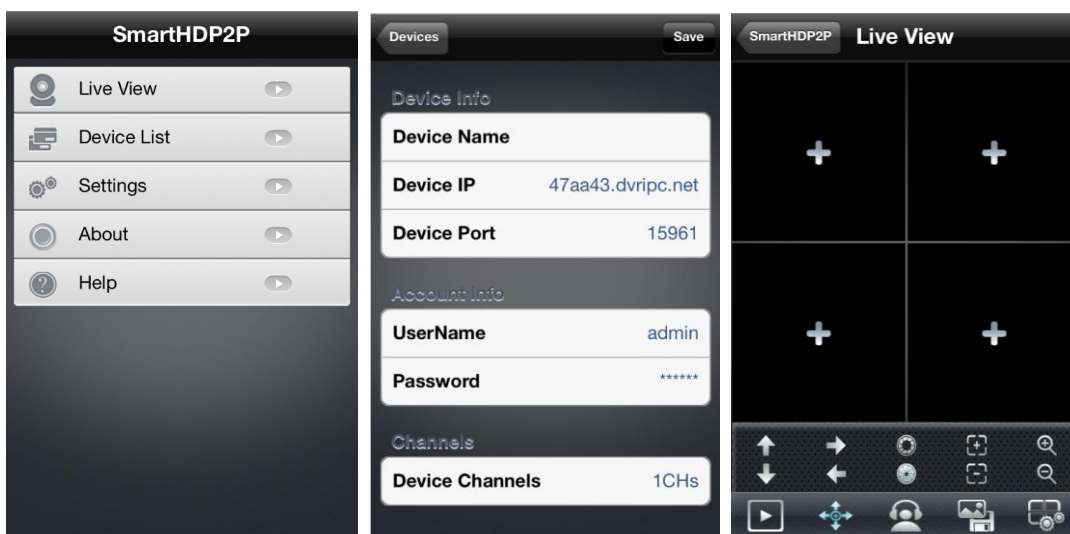
1. Main Menu - Network - DDNS, select MY E-Video as the DDNS type, then check the domain name ,for example: 11ae79.dvripc.net, this is the domain name you can

use to visit the device by IE, NVClient or mobile. Use smarthdp2p APP in mobile can scan QR cord to add the device.



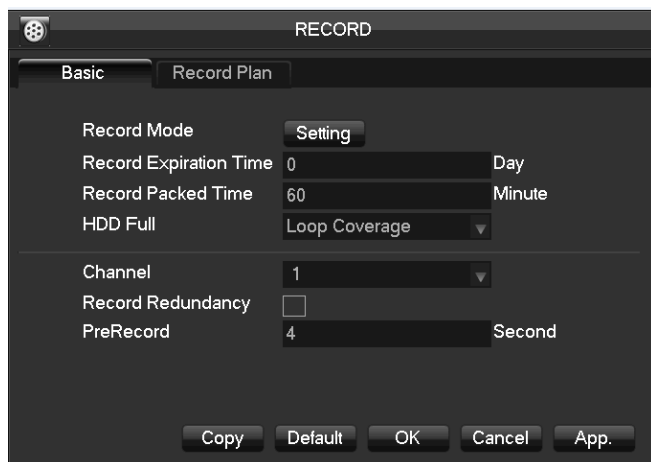
2. Input the My E-video domain name in the IE address bar, you can find the domain name in NVR: Main Menu - Network - Net Apply - DDNS, select DDNS type - My E-video DDNS, for example: 11ae79.dvripc.net.

Install smarthdp2p APP in mobile, add device info to view the live video. (Manually or scan QR cord)



8 Record

1. 【Main Menu】 - 【Record】 - 【Basic】



【Record Mode】 Schedule, manual, stop

【Record Expiation Time】 0-365 Day

【Record Packed Time】 5-120 Minute

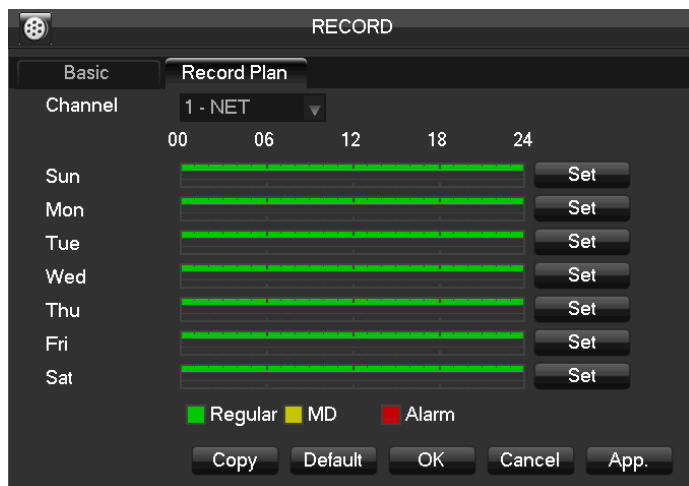
【HDD Full】 Stop or loop coverage

【Channel】 The channel selection

【Record Redundancy】 On/ Off

【Prerecord】 0-30 Second

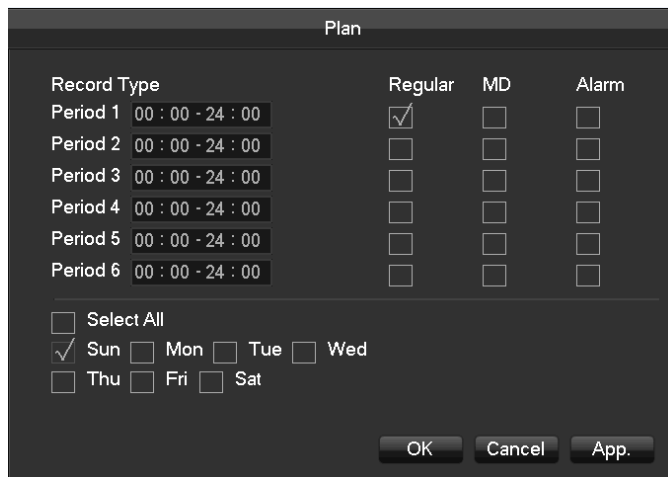
2. 【Main Menu】 - 【Record】 - 【Record Plan】



【Channel】 : To select channel. Green, yellow and red refer to the normal, MD and alarm recording type. Modify it in 【Edit】 .

【Copy】 copy one channel's configuration to other

【Edit】 edit plan interface 错误！未找到引用源。 :



【Time】 recording time, 6 recording time zone can be set every day

【Normal】 for normal record

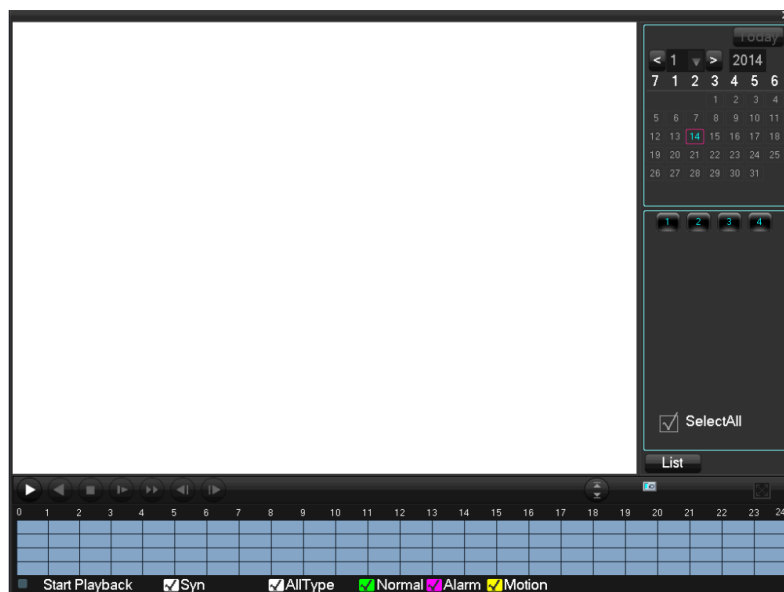
【Moving Detection】 For Moving detection

【Alarm】 For alarm record

9 Playback

Right click in the live view interface, click **【Search】** , or choose **【Search】** in main menu to enter playback interface.

Select channel to search the recording of this channel, double-click to playback.



10 Shutdown

【Main Menu】 - 【Shutdown】 - 【Shutdown】

