

Gilbarco Passport Text Inserter

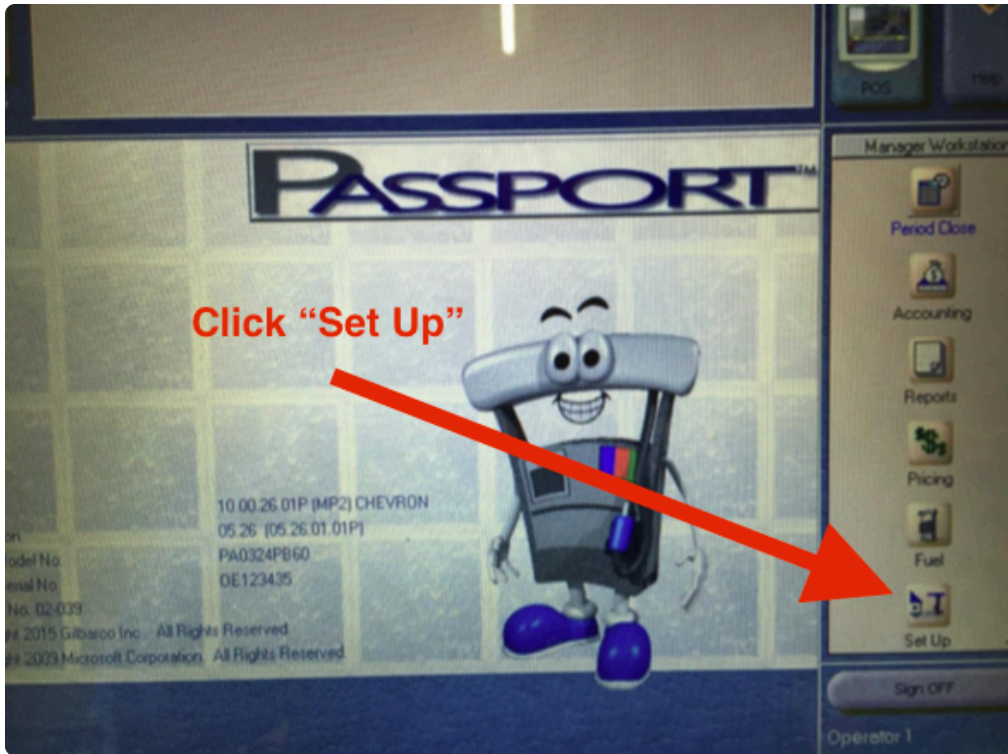
- How to setup the configuration
 1. Log-in
 2. Click on 'Manager Workstation'
 3. go to 'Set up' menu.
 4. Choose 'Store'.
 5. and then 'Security Camera'
 6. Use 'COM Port'
 7. Set COM port to 9 for 'Stand alone client'
 8. Set COM port to 19 for 'Combined server'
 9. Connect your cable to the back of Edgeport's COM5 input.

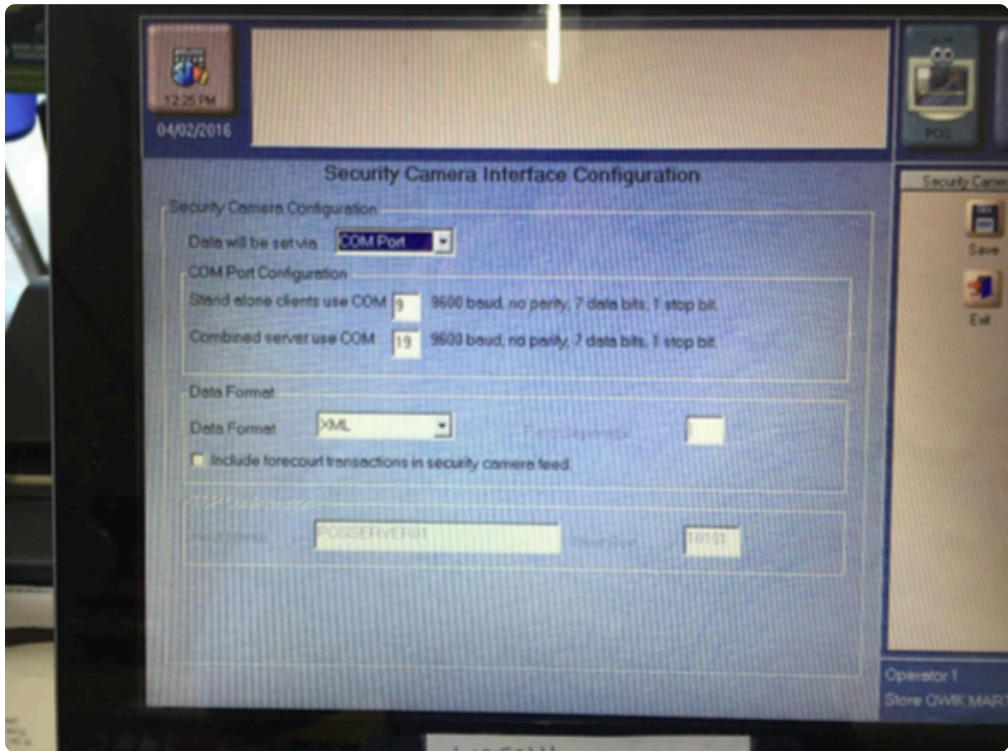
pin setup

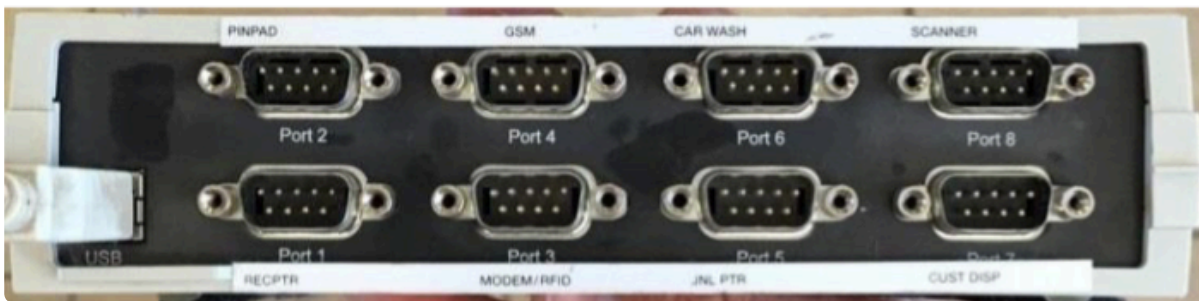
| RJ45 | DB9 |
|----------|-----|
| ----- | --- |
| 2 -----> | 3 |
| 3 -----> | 2 |

10. in the DVR configuration,

baud rate: 9600
parity: 7bit (if applicable)
start word: TIME
end word: DATE

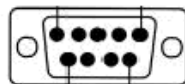






DB-9 CONNECTOR

RJ45 CONNECTOR



- DCD - Data Carrier Detect: Pin 1
- RD - Receive Data: Pin 2
- TD - Transmit Data: Pin 3
- DTR - Data Term Ready: Pin 4
- GND - Ground: Pin 5
- DSR - Data Set Ready: Pin 6
- RTS - Ready To Send: Pin 7
- CTS - Clear To Send: Pin 8
- RI - Ring Indicator: Pin 9

- Pin 1 - 5 volt receiver
- Pin 2 - DSR
- Pin 3 - TXD
- Pin 4 - RXD
- Pin 5 - GND
- Pin 6 - RTS
- Pin 7 - CTS
- Pin 8 - Chassis Ground



