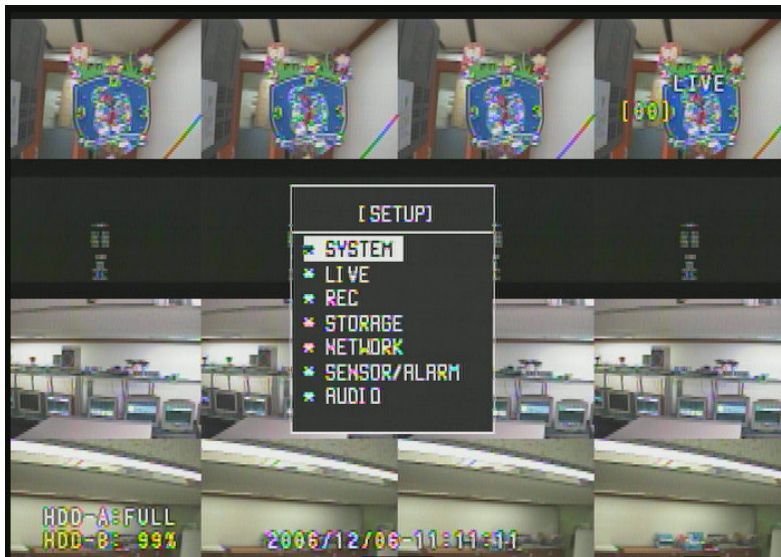
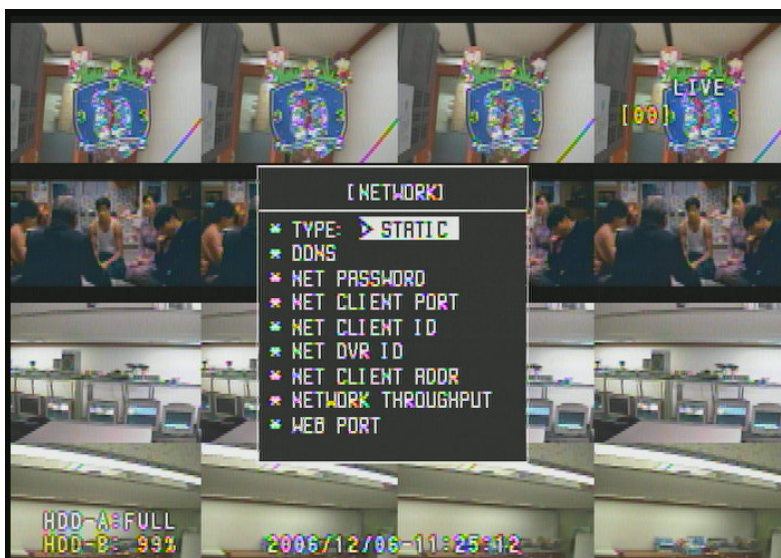


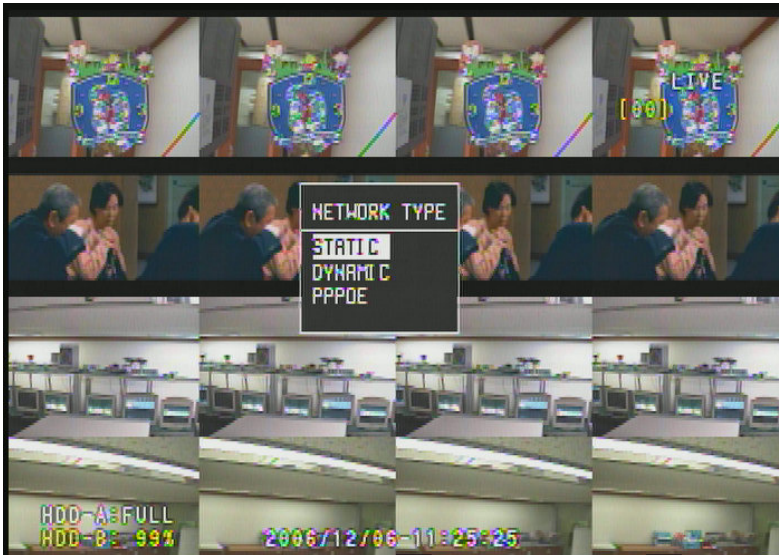
LOGIN TO SET UP PAGE. YOUR DEFAULT USER NAME IS ADMIN AND  
PASSWORD IS 0000



GO DOWN TO NETWORK AND PRESS SELECT BUTTON.  
AT THE TYPE HIGH LIGHTED, PRESS SELECT



GO DOWN TO DYNAMIC AND PRESS SELECT. DVR WILL DETECT IP ADDRESS FROM THE ROUTER AUTOMATICALLY FOR YOU. AS SOON AS YOU HAVE AN IP ADDRESS, CHANGE THE NETWORK TYPE BACK TO STATIC.



YOU ARE DONE WITH THE DVR SETTING. NOW YOU MAY GO OUT OF THE MENU.

PORTFORWARD #7620-7624 AND #80 FOR SERVER LOGIN FROM YOUR ROUTER.

FOR THE LYNIS ROUTERS, GO TO SECURITY AND DISABLE ANONYMOUS INTERNET REQUEST.

USING THE CLIENT SOFTWARE TO LOGIN, ON THE INTERFACE OF THE SOFTWARE, PRESS CONNECT BUTTON.

YOU CAN NAME THE DVR, THE PORT IS 7620 AND FOR THE USER PUT ADMIN, AND THE PASSWORD IS 0000.

FOR THE WEB BROWSER LOGIN, YOU HAVE TO GO TO THE SERVER ([WWW.DVR.ENVIEW.NET](http://WWW.DVR.ENVIEW.NET)), AND REGISTER WITH THE SERVER.

Y