

SETTING YOUR DVR.

*DO NOT NEED TO CHANGE ANY OF THE DVR'S MENU SETTINGS.

***YOU ONLY NEED TO CHANGE THE SETTINGS OF YOUR DVR'S WINDOW SETTINGS.

WINDOW'S FIREWALL

MAKE SURE YOU DISABLE THE FIREWALL OF THE WINDOW XP.

TO CHECK THE FIREWALL STATUS.

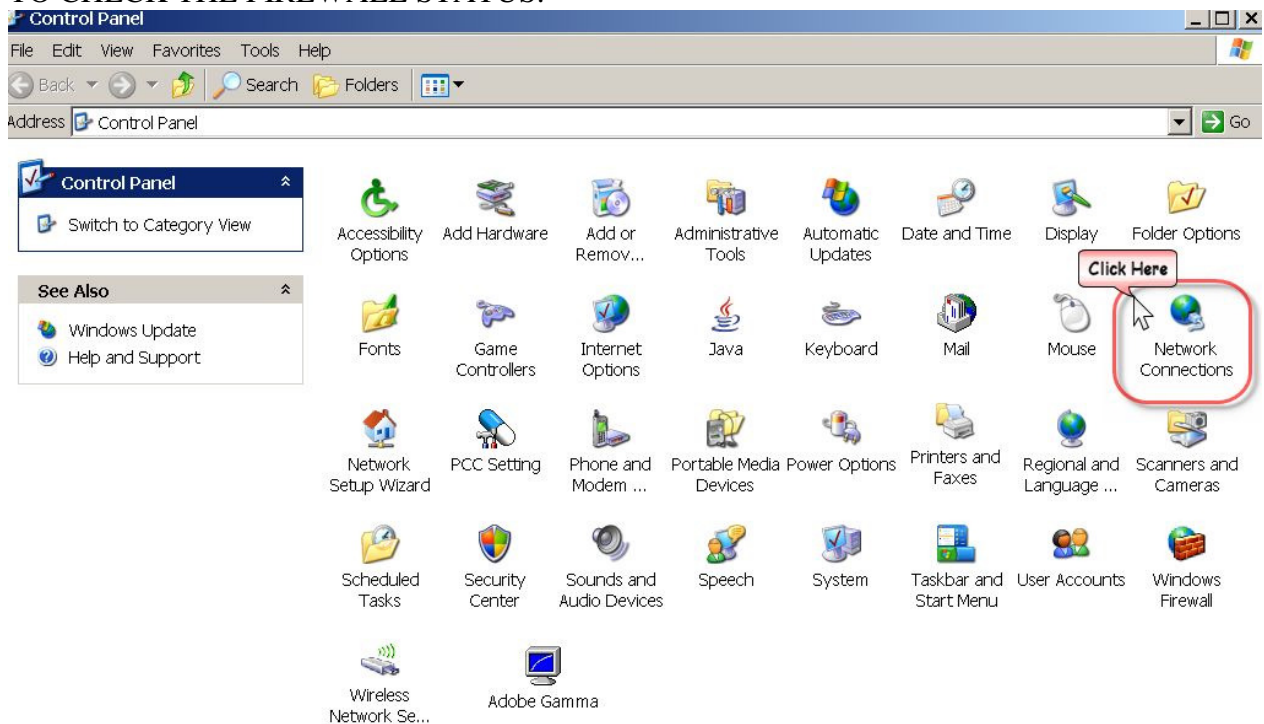


FIGURE 1-1

GO TO START—CONTROL PANNEL—DOUBLE CLICK ON NETWORK CONNECTIONS



FIGURE 1-2

RIGHT CLICK ON THE LOCAL AREA CONNECTION AND THEN PROPERTIES

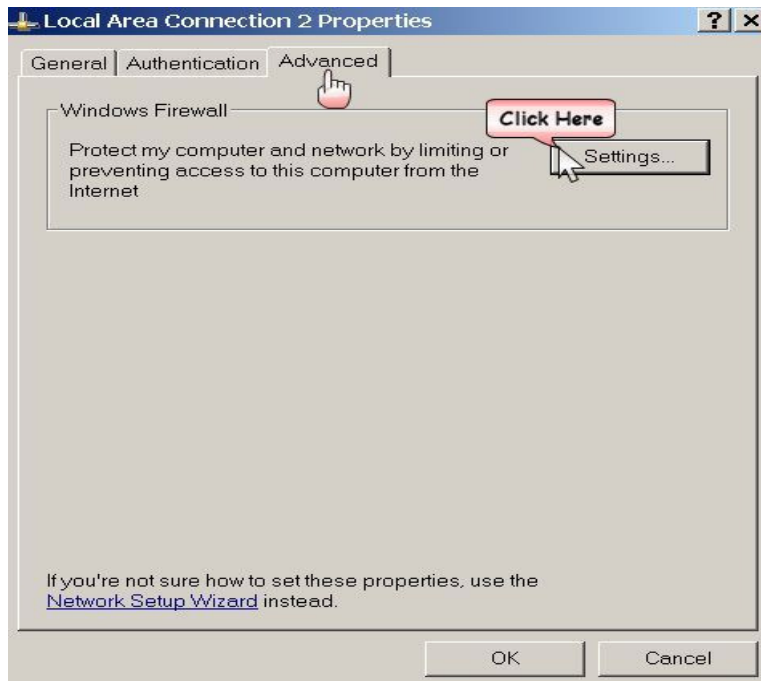


FIGURE 1-3

CLICK ON THE LAST TAB (ADVANCED)—CLICK ON THE SETTINGS BUTTON

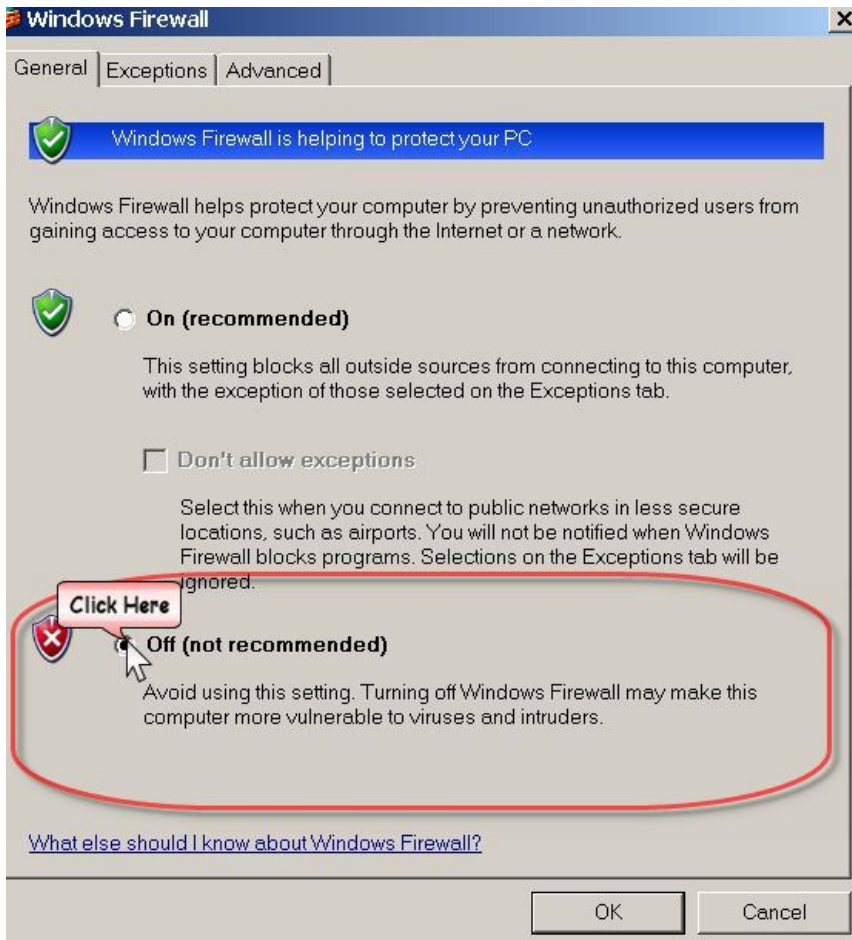


FIGURE 1-4

DISABLE THE FIREWALL

[SET YOUR WINDOW'S NETWORK SETTINGS TO RECEIVE A STATIC IP ADDRESS FROM YOUR ROUTER.](#)

GO TO START—CONTROL PANNEL(FIGURE 1-1)—NETWORK CONNECTIONS(FIGURE 1-2)—RIGHT CLICK ON THE LOCAL AREA CONNECTION AND THEN PROPERTIES(FIGURE 1-3)

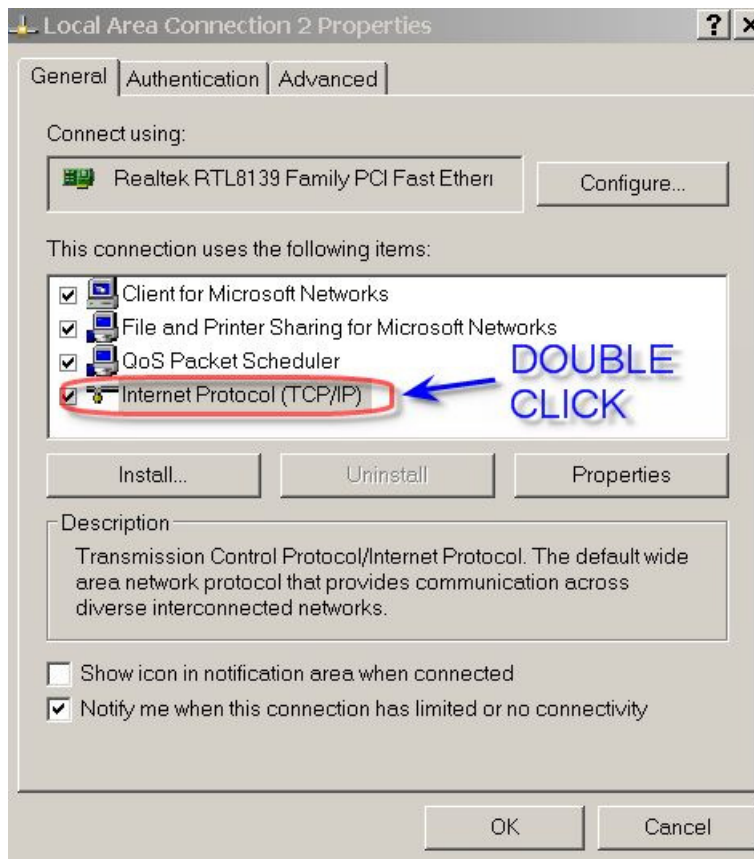


FIGURE 2-1

AT THE BOX DOUBLE CLICK ON THE INTERNET PROTOCOL(TCP/IP)

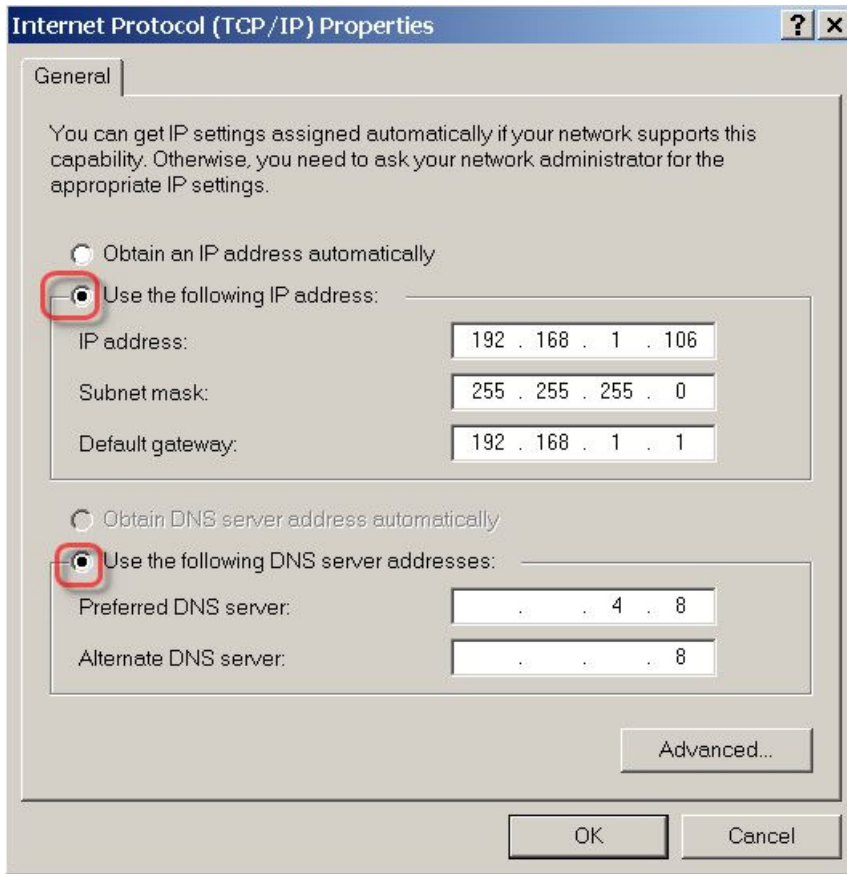


FIGURE 2-2

SET IT TO USE THE FOLLOWING IP ADDRESS(YOU NEED TO TYPE IN THE CORRECT VALUES FOR ALL OF THE FIVE BLANK BOXES INCLUDING THE DNS SERVERS.)-----*FOLLOW THE PROCEDURE BELOW TO OBTAIN CORRECT VALUES)

THE VALUES CAN BE FOUND FROM THE COMMAND WINDOW.

YOU CAN GO TO COMMAND WINDOW AND GET THE VALUES BY GOING TO

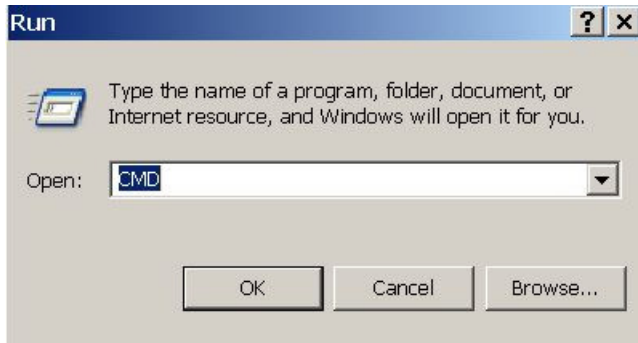


FIGURE 3-1

START—RUN—TYPE CMD AND ENTER

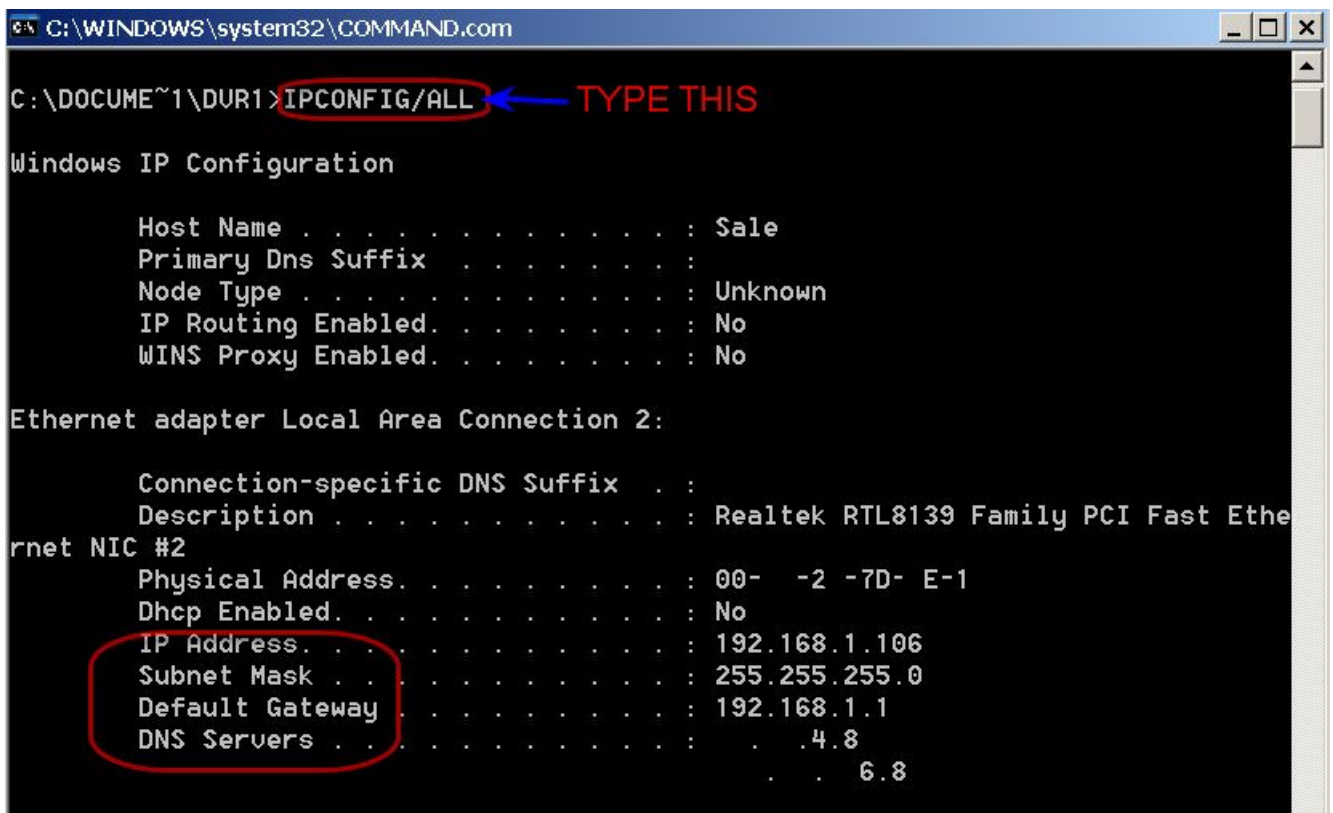


FIGURE 3-2

AT THE COMMAND WINDOW TYPE IPCONFIG/ALL AND ENTER

NOW YOU HAVE EVERY INFORMATION YOU NEED.

TYPE THOSE INFORMATION IN THE BLANK BOXES OF FIGURE 2-2

*FOR SOME OF THE INTERNET SERVICE PROVIDERS, YOU MAY HAVE THREE DNS SERVERS. IF THAT'S THE CASE FOR YOU THEN YOU NEED TO ADD THE THIRD DNS SERVER AT THE INTERNET PROTOCOL PROPERTIES.

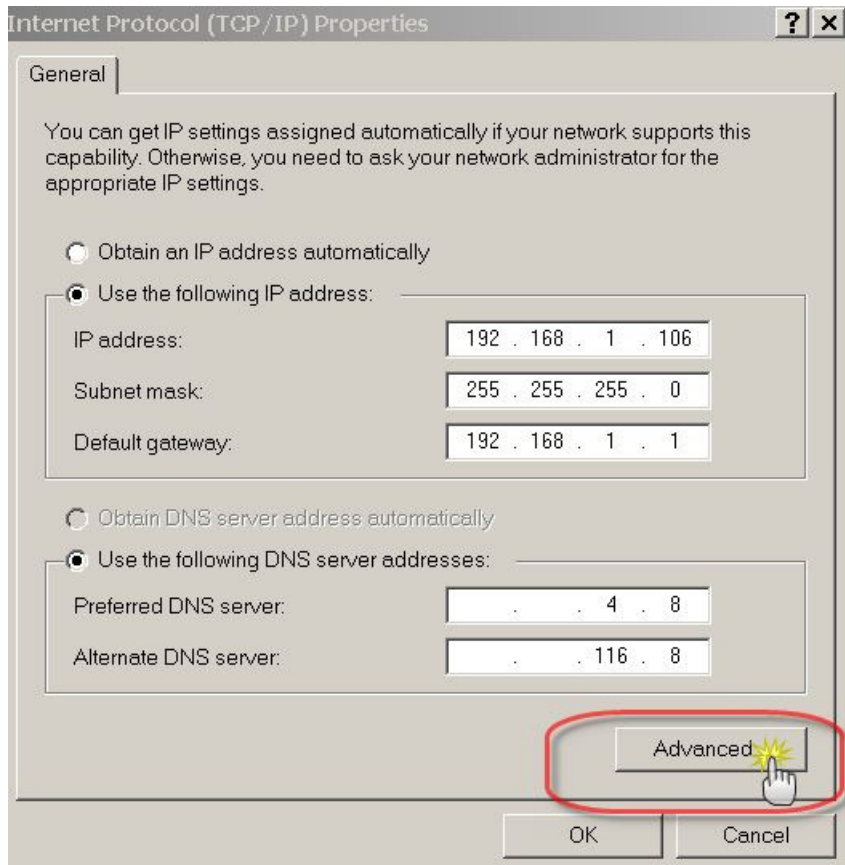


FIGURE 4-1

BY CLICKING ON THE ADVANCED BUTTON AT THE INTERNET PROTOCOL PROPERTIES, YOU CAN NOW ADD THE THIRD DNS SERVER.

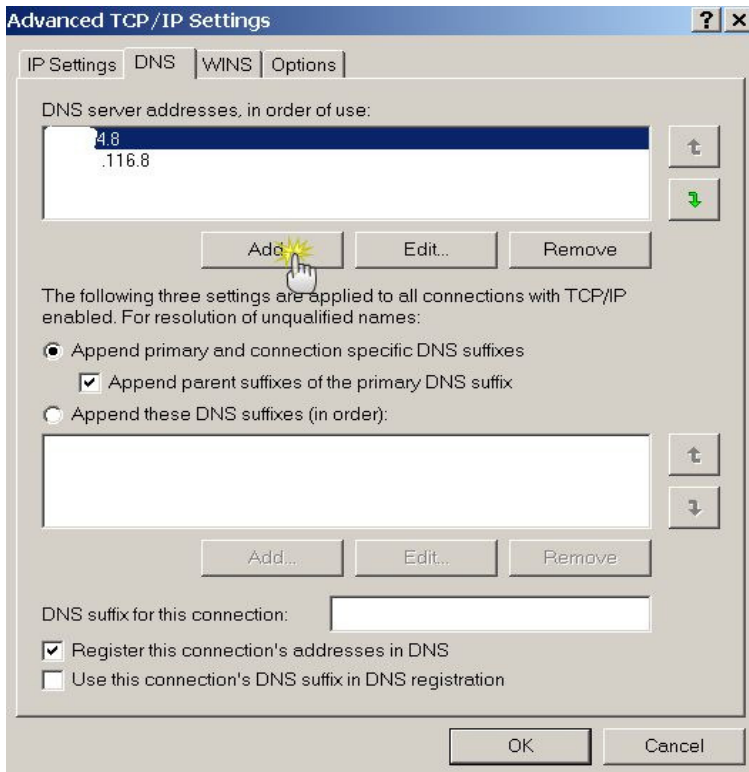


FIGURE 4-2

AT THE ADVANCED SETTING OF THE INTERNET PROTOCOL PROPERTIES, CLICK ON THE SECOND TAB(DNS)—CLICK ON THE ADD BUTTON—TYPE IN THE THIRD DNS SERVER VALUE AND OK.

***IF YOU CAN NOT FIND DNS INFORMATION FROM THE COMMAND WINDOW, YOU MAY EITHER GO TO YOUR ROUTER'S STATUS, OR CONTACT YOUR INTERNET SERVICE PROVIDER FOR THE INFORMATION.**

ROUTER SETTING

1) YOU NEED TO OPEN UP PORTS NUMBER 9091-9112 AND 80.(FIGURE 5-1)

) DVR'S IP CAN NOT BE WITHIN THE RANGE OF THE DHCP SETTING OF YOUR ROUTER. (FIGURE 5-2)

3) YOU NEED TO DISABLE DMZ. (FIGURE 5-3)

4) CHECK YOUR SECURITY SET UP.

**FOR LINSYS ROUTER USERS

AT THE SECURITY SET UP, YOU NEED TO DISABLE BLOCKING ANONYMOUS INTERNET REQUEST.

LINKSYS®

Filters Forwarding Dynamic Routing Static Routing DMZ Host MAC Clone DDNS Setup

FORWARDING

Port forwarding can be used to set up public services on your network. When users from the Internet make certain request of the Router, they will be redirected to the specified IP address. Special applications may require a specific range of ports to be forwarded. Click the help button for additional information.

Customized Applications	Ext.Port	Protocol TCP	Protocol UDP	IP Address	Enable
DVR 9000	9091 To 9112	<input checked="" type="checkbox"/>	<input checked="" type="checkbox"/>	192.168.1.110	<input checked="" type="checkbox"/>
DVR.WEB	80 To 80	<input checked="" type="checkbox"/>	<input checked="" type="checkbox"/>	192.168.1.110	<input checked="" type="checkbox"/>

FIGURE 5-1

NAME YOUR APPLICATIONS. THEY CAN BE ANYTHING YOU WANT.

TYPE IN THE PORTS THAT YOU WANT TO OPEN. PORT #9091-9112 AND 80 ARE DEFAULT.

CHECK BOTH OF PROTOCOLS.(TCP AND UDP). IF YOU HAVE THE DROP WINDOW FORMAT, THEN PUT IT TO BOTH.

TYPE IN YOUR DVR'S IP ADDRESS.

MAKE SURE YOU CHECK THE ENABLE BOX.

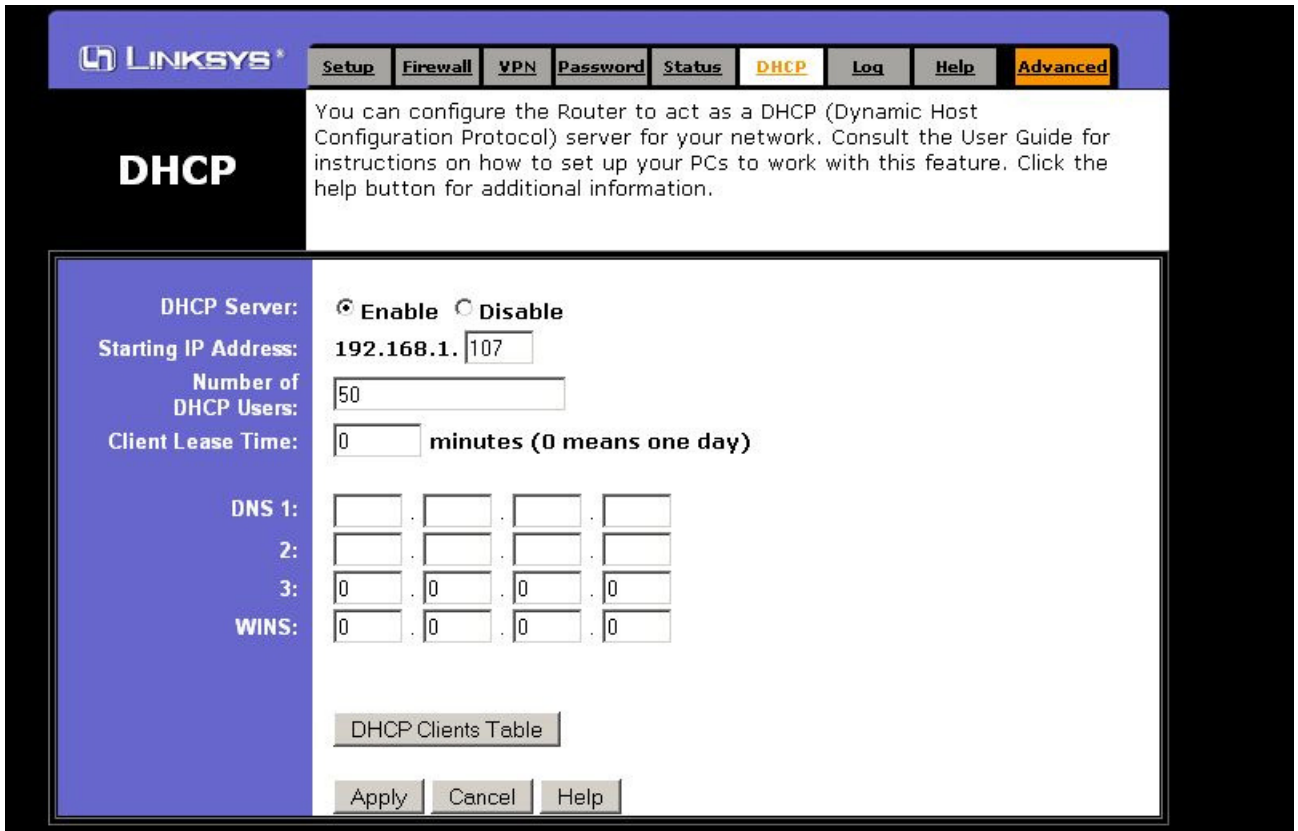


FIGURE 5-2

THE RANGE FOR DHCP IN FIGURE 1-3 IS 192.168.1.107 TO 192.168.1.157

IF YOUR DVR'S IP IS 192.168.1.108 THEN YOU MUST CHANGE THE STARTING IP FOR THE DHCP TO 192.168.1.109 OR 192.168.1.110 OR 192.168.1.111.....AND SO ON.

POINT HERE IS THAT THE DVR'S IP CAN NOT BE INCLUDED WITHIN THE RANGE OF THE DHCP.

FOR SOME REASON IF YOU CAN NOT CHANGE THE RANGE OF DHCP, THEN TRY TO CHANGE THE DVR'S IP ADDRESS.

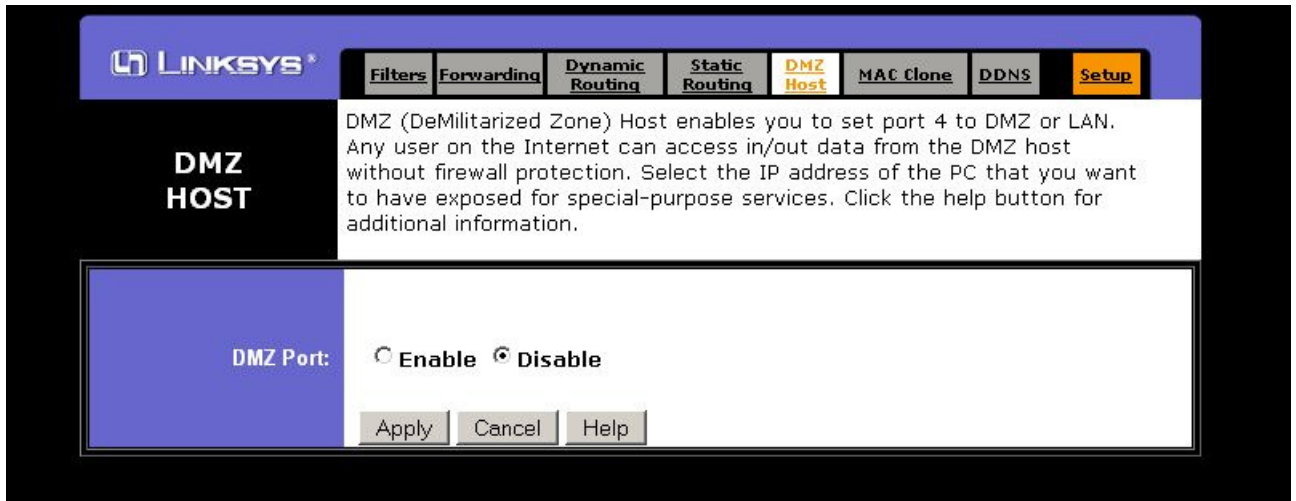


FIGURE 5-3

MAKE SURE YOU DISABLE THE DMZ.

AT THIS POINT, YOU SHOULD BE ABLE TO GET IN TO YOUR DVR REMOTELY. IF YOU CAN NOT, THEN CHECK THE MODEM.

YOU MAY HAVE A MODEM WITH THE ROUTER FUNCTION BUILT IN.

IF THAT'S THE CASE, YOU NEED TO BRIDGE OUT YOUR MODEM(DISABLING THE ROUTER FUNCTION)*PLEASE CONTACT YOUR INTERNET SERVICE PROVIDER FOR FURTHER INSTRUCTIONS.**