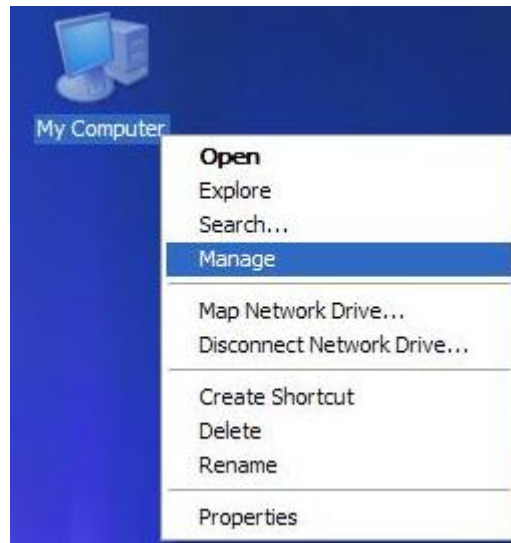


STEPS FOR ADDING A NEW HDD IN 9000 SERIES

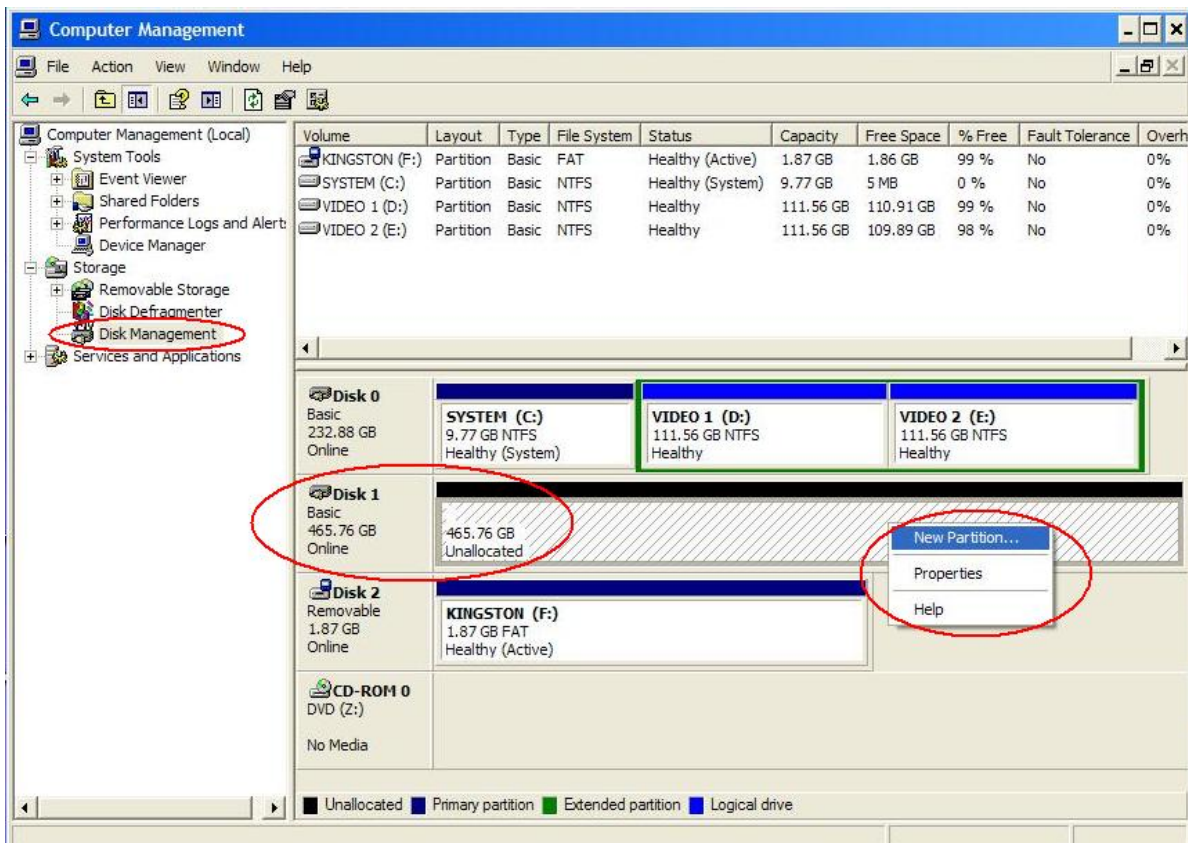
1) On DESKTOP right click My Computer -> Manage



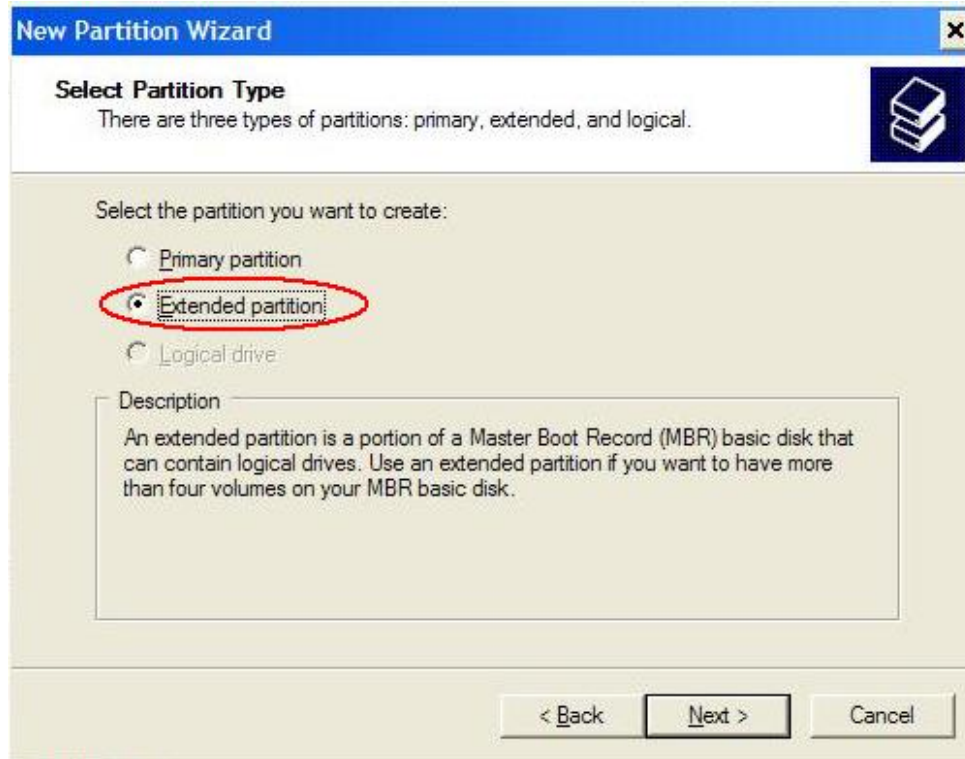
2) From Computer Management -> DISK MANAGEMENT

Right click new DISK, which is DISK 1 in this case and press INITIALIZE -> OK

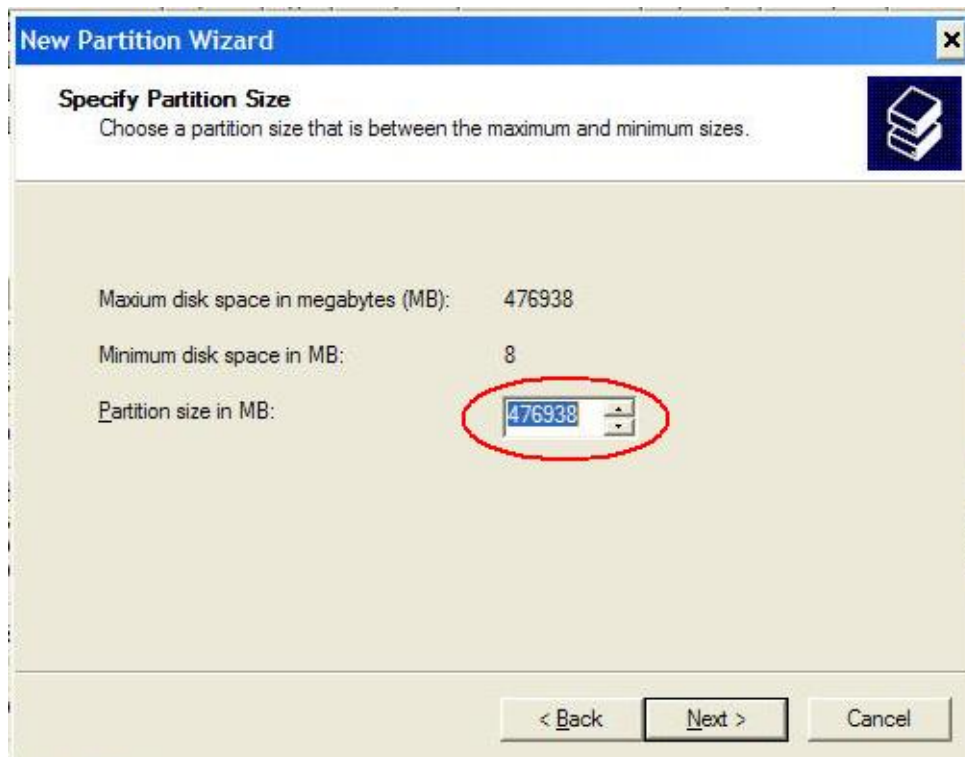
Right click anywhere on new DISK 1 and press NEW PARTITION



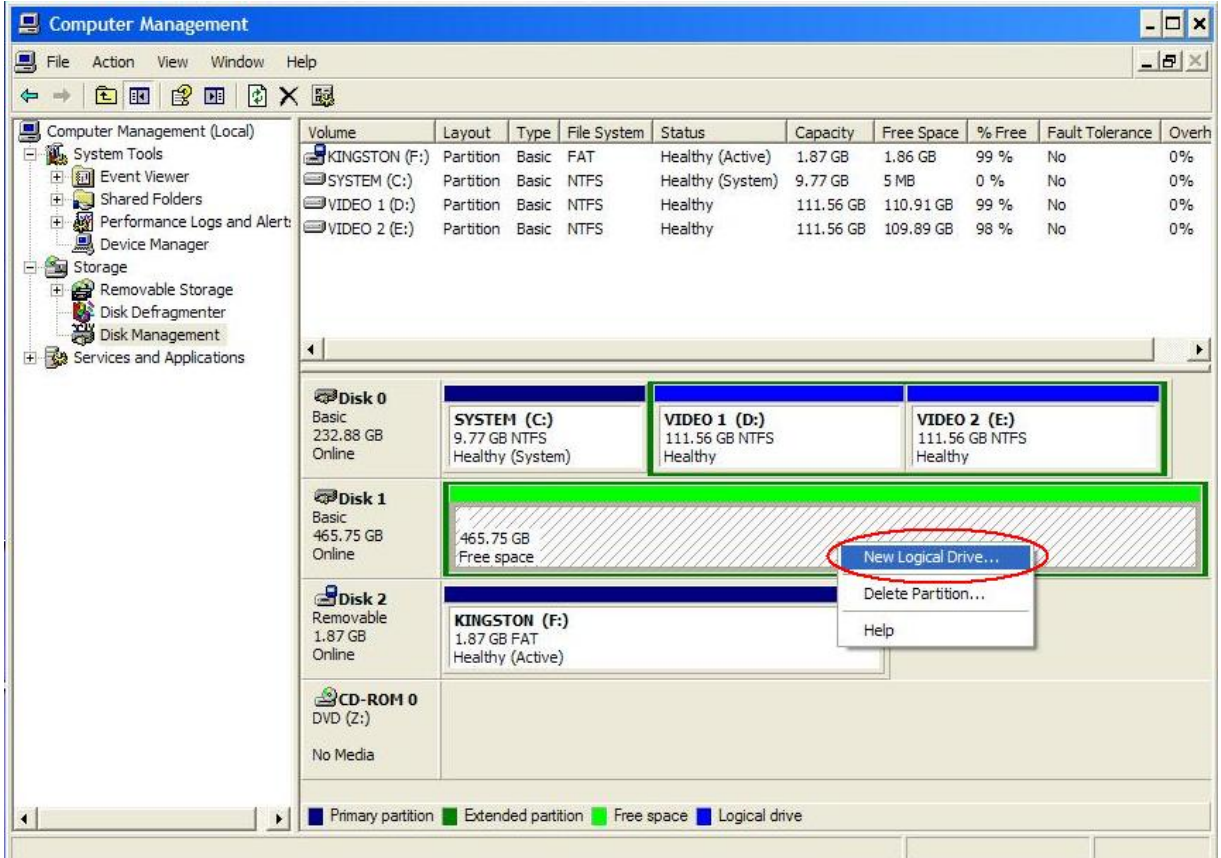
3) Choose EXTENDED PARTITION



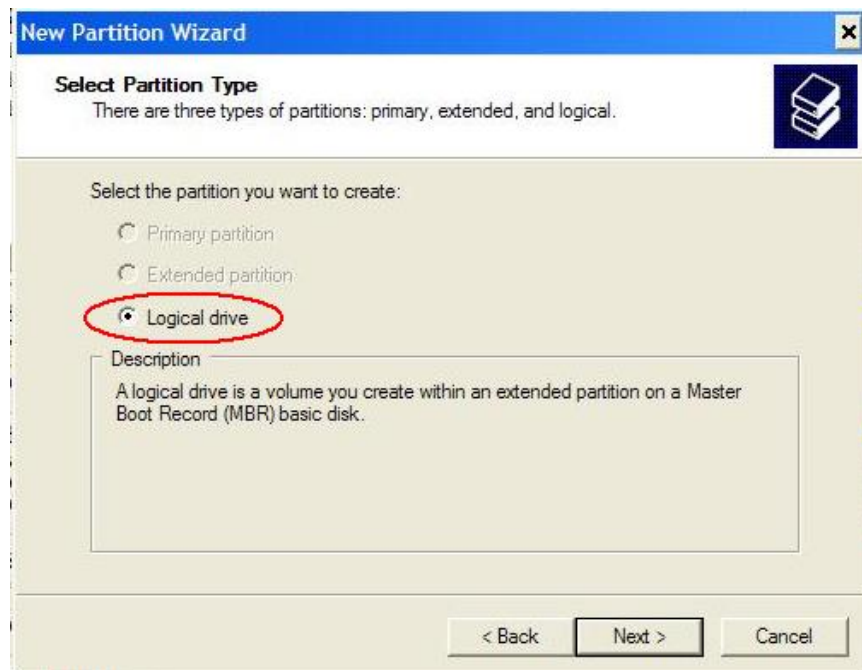
4) In PARTITION SIZE IN MB type same was MAXIMUM DISK SPACE IN MEGABYTES (MB).



5) EXTENDED PARTITION is going to be mark in green as shown below.
RIGHT CLICK on EXTENDED PARTITION and choose NEW LOGICAL DRIVE.



6) Choose LOGICAL DRIVE



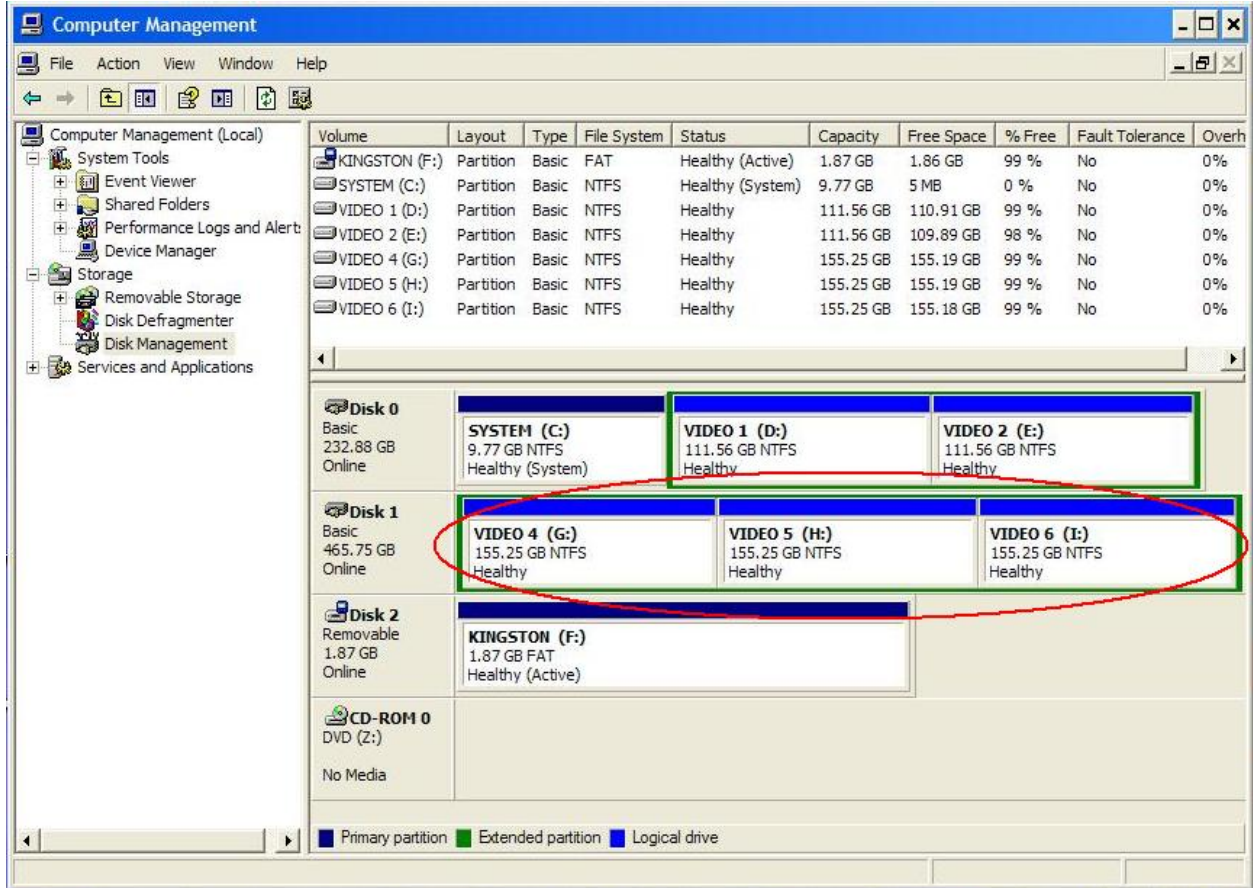
7) For 500GB we recommend to divide by 3 partition ($476930/3 = 158977$).

The screenshot shows the 'New Partition Wizard' dialog box with the title bar 'New Partition Wizard' and a close button. The main heading is 'Specify Partition Size' with a sub-instruction: 'Choose a partition size that is between the maximum and minimum sizes.' Below this, there are three input fields: 'Maximum disk space in megabytes (MB):' with the value '476930', 'Minimum disk space in MB:' with the value '8', and 'Partition size in MB:' with the value '158977'. The '158977' value is entered in a spin box. At the bottom, there are three buttons: '< Back', 'Next >', and 'Cancel'.

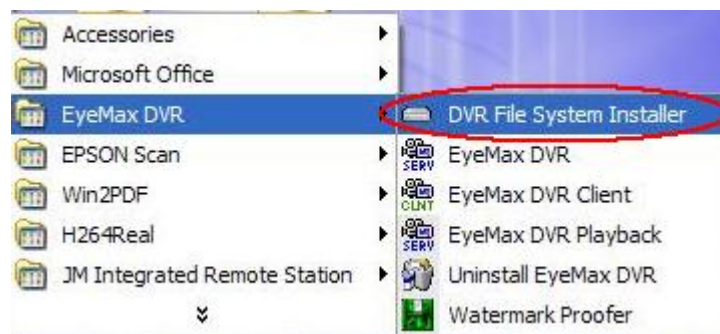
8) Check on PERFORM A QUICK FORMAT.

The screenshot shows the 'New Partition Wizard' dialog box with the title bar 'New Partition Wizard' and a close button. The main heading is 'Format Partition' with a sub-instruction: 'To store data on this partition, you must format it first.' Below this, there is a text prompt: 'Choose whether you want to format this partition, and if so, what settings you want to use.' There are two radio button options: 'Do not format this partition' (unselected) and 'Format this partition with the following settings:' (selected). Under the selected option, there are three dropdown menus: 'File system:' set to 'NTFS', 'Allocation unit size:' set to 'Default', and 'Volume label:' set to 'VIDEO 4'. Below these are two checkboxes: 'Perform a quick format' (checked and circled in red) and 'Enable file and folder compression' (unchecked). At the bottom, there are three buttons: '< Back', 'Next >', and 'Cancel'.

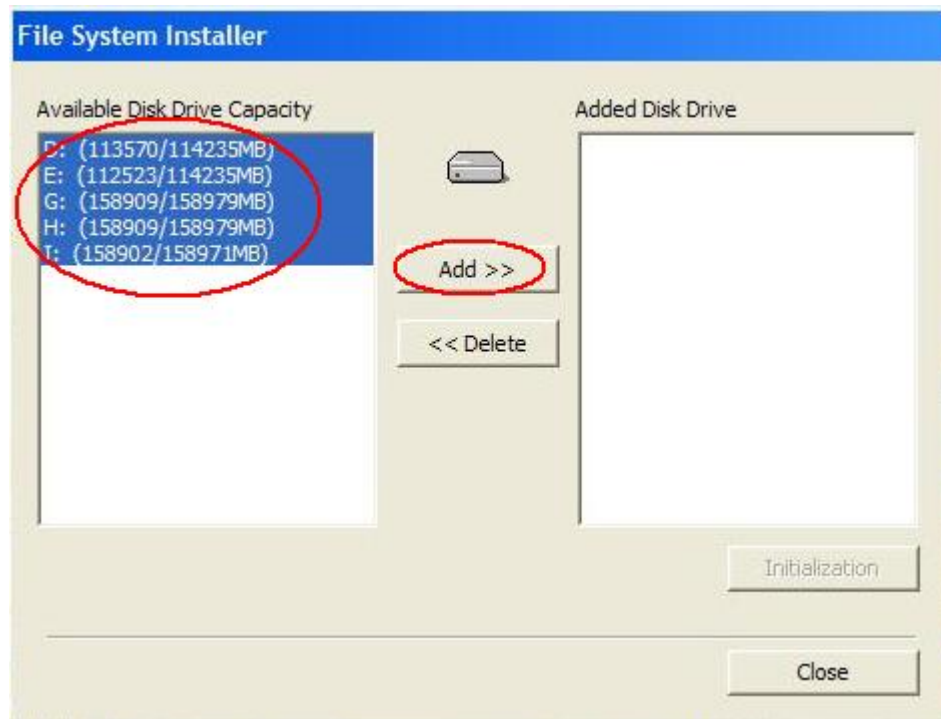
9) Once all 3 partitions are done you will get something similar as picture below.



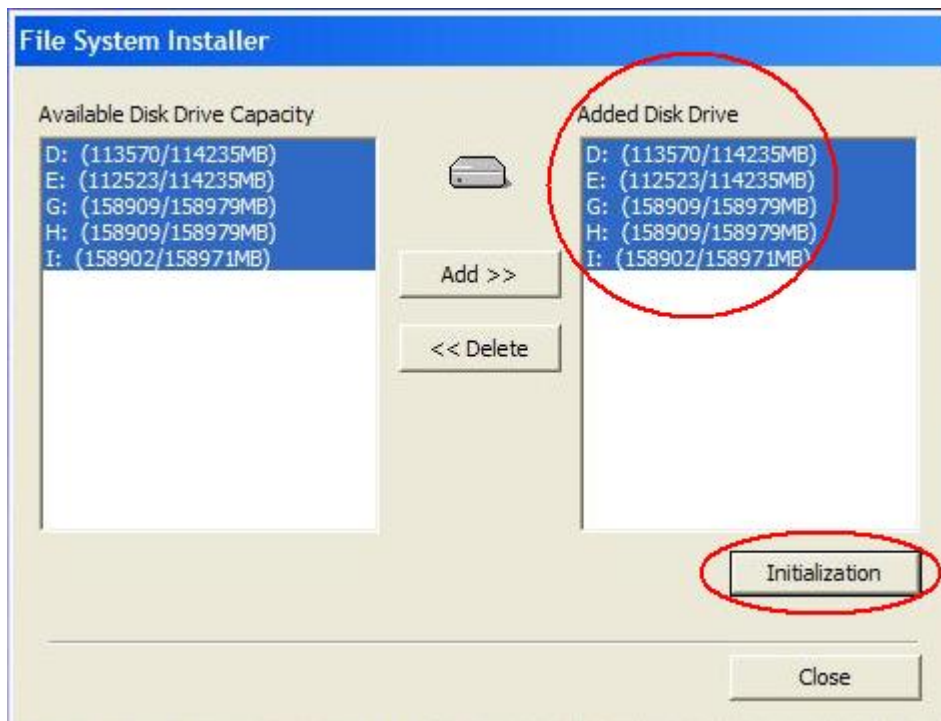
10) Now we need to MOUNT all new partitions that we have made.
Go to START -> PROGRAMS -> EYEMAX DVR -> DVR FILE SYSTEM INSTALLER



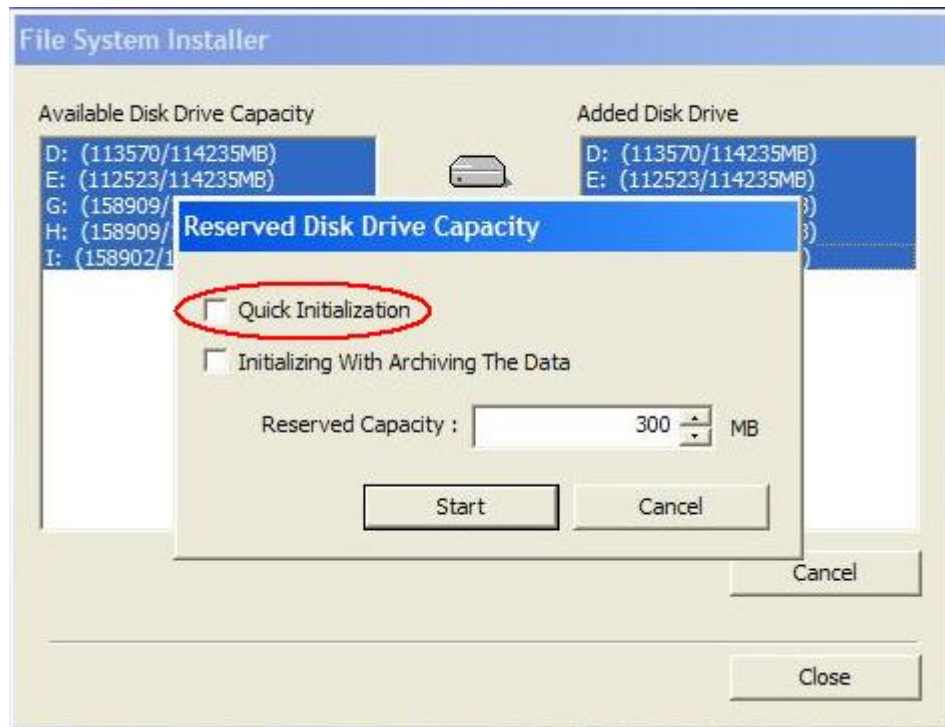
11) On the left side (AVAILABLE DISK DRIVE CAPACITY) choose all new partition **EXCEPT C: DRIVE** then press ADD button.



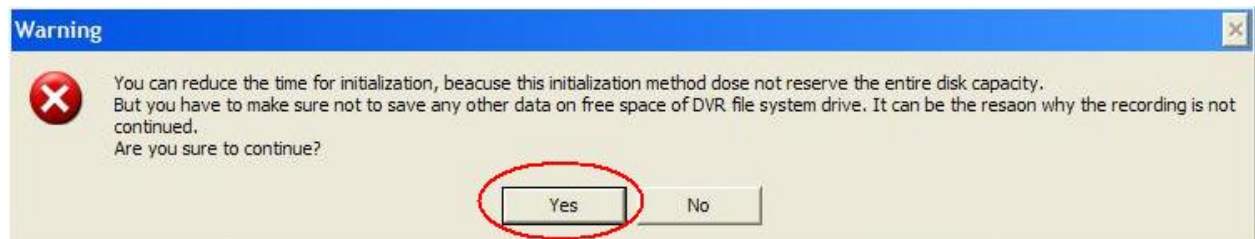
12) Select NEW partitions from right side then click INITIALIZATION.



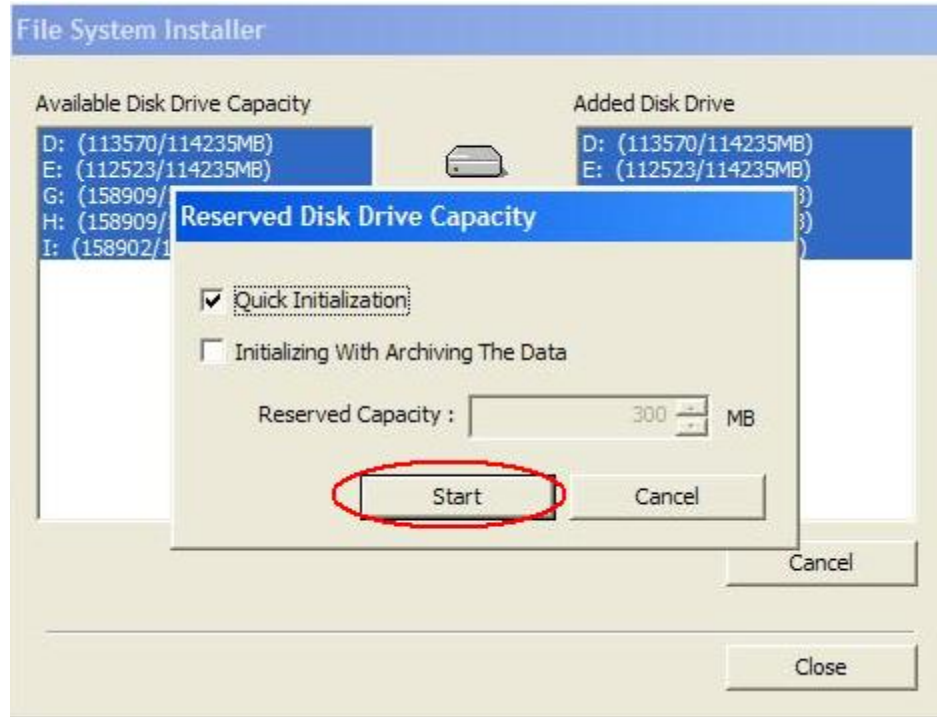
13) Check QUICK INITIALIZATION



14) When QUICK INITIALIZATION is selected a message is going to pop up as shown below. Press YES.



15) Choose START and the program is going to INITIALIZE all HDDs.



Once it's done CLOSE it and run EYEMAX DVR.