

# MOBILE VIEWER

## SYSTEM REQUIREMENTS :

1. STORAGE SPACE : At least 1MB
2. MEMORY : At least 6 MB; suggest 10MB
3. SMART PHONE or PDA : Support Microsoft Windows Mobile or WinCE as following.
  - a. Windows Mobile 5
  - b. Windows Mobile 6
  - c. Windows Mobile 2003 SE
  - d. Windows Mobile 2003
  - e. WinCE 4.0 or above.

## IMAGE TRANSMISSION METHODS :

(Depend on SMART PHONE or PDA)

1. GPRS
2. 3G (WCDMA...)
3. 3.5G (HSDPA...)
4. USB LINK
5. WIFI ( 802.11b / 802.11g ... )
6. Bluetooth
7. Infrared

## EXECUTION PROGRAM : (MOBILE\_VIEWER.exe)

This program does not required to install in PC or PDA. Please save "MOBILE\_VIEWER.exe" on SMART PHONE or PDA via USB Link, Memory Cards, WIFI, Bluetooth, or Infrared transmissions and so on. Then, click on "MOBILE\_VIEWER.exe" to execute the program.

## **QUICK GUIDE**

Build new stie:

1. Click "Site".
2. Click "Manage".
3. Click "New"
4. Please key in Name, IP, Port, Account, Password, etc.
5. Click "OK"

Build 3.5G / 3G / GPRS link:

1. Click "Operate"
2. Click "GPRS / 3G"
3. If connection success, H, 3G, or G tag will appear on the top of the screen. (H means 3.5G of HSDPA, 3G means 3G of WCDMA, G means 2.5G of GPRS)

Surveillance:

1. Please build 3G/GPRS link before surveillance via 3.5G/3G/GPRS.
2. Click "site"
3. Select site on the site list.
4. Click "Select"

Site Management:

1. Click "Site"
2. Select site on the site list
3. Click "Manage"
4. Edit Name, IP, Port, Account, Password, etc
5. Click "OK"

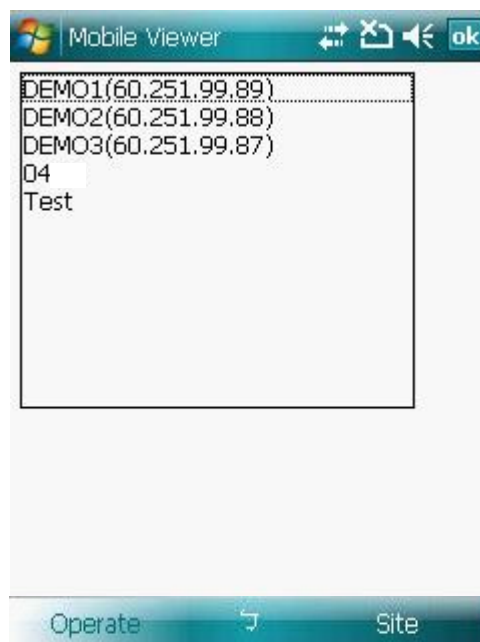
## MAIN MANU :

There are 3 main menus, including Live View, Site List, and Site Data.

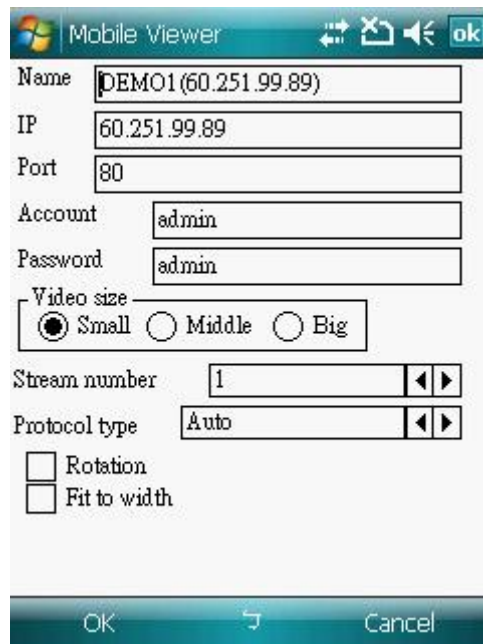
### 1. Live View (main screen)



### 2. Site List



### 3. Site Data



The image shows a 'Mobile Viewer' configuration dialog box. It has a title bar with a Windows logo, the text 'Mobile Viewer', and icons for zooming, window management, and an 'ok' button. The dialog contains several input fields and options:

- Name:** A text field containing 'DEMO1 (60.251.99.89)'.
- IP:** A text field containing '60.251.99.89'.
- Port:** A text field containing '80'.
- Account:** A text field containing 'admin'.
- Password:** A text field containing 'admin'.
- Video size:** A group box containing three radio buttons: 'Small' (selected), 'Middle', and 'Big'.
- Stream number:** A text field containing '1' with left and right arrow buttons.
- Protocol type:** A text field containing 'Auto' with left and right arrow buttons.
- Rotation:** An unchecked checkbox.
- Fit to width:** An unchecked checkbox.

At the bottom of the dialog is a bar with 'OK', a back arrow, and 'Cancel' buttons.

## Menu :

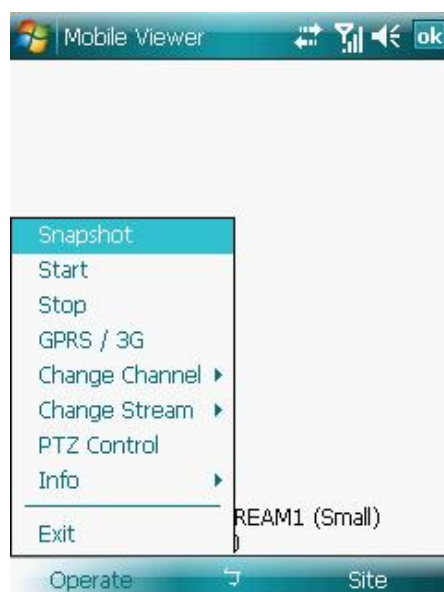
In the bottom of each main menu, there are two Submenus.  
Each main menu can call another submenu or screen.

### 1. Live view screen



**Operate** : Click on to enter submenu

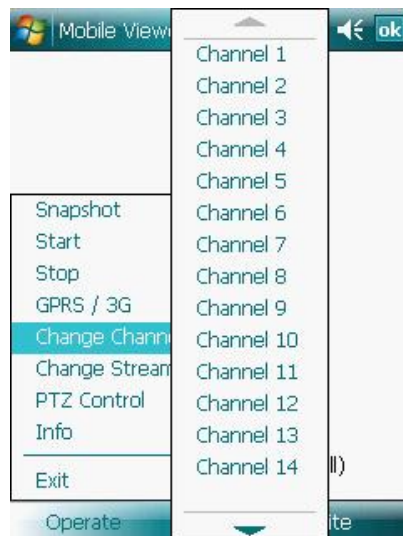
**NOTE:** Due to the smart phone and PDA specifications and resolution are not united, when the connected image is larger than the screen size of smart phone and PDA, the user can operate navigation key to see the wanted image or press the central button of navigation key to adjust the image size to the suitable one.

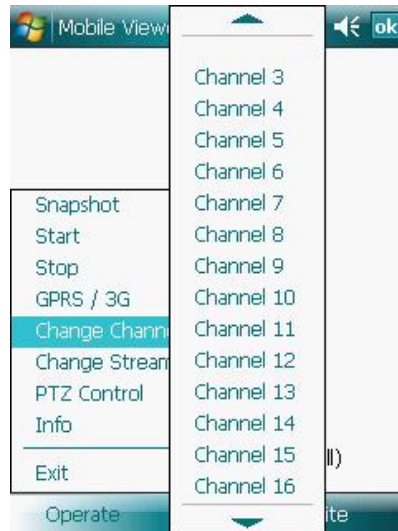


- a. **Snapshot** (save the picture as .jpeg files)
- b. **Start** (Enable the image transmissions methods, including USB Link, WIFI, Bluetooth, and Infrared).
- c. **Stop** (Disable the image transmission methods, including USB Link, WIFI, Bluetooth, and Infrared).
- d. **GPRS / 3G** (Enable the image transmission method of GPRS or 3G).
- e. **Change Channel** (switch channel).

**NOTE: 1. If the connected DVR uses M-JPEG Network Interface Card, please use “Change Channel” option to switch the channel. However, if the DVR supports MPEG4 or H.264 compression format, please go to “Change Stream” to change the channel.**

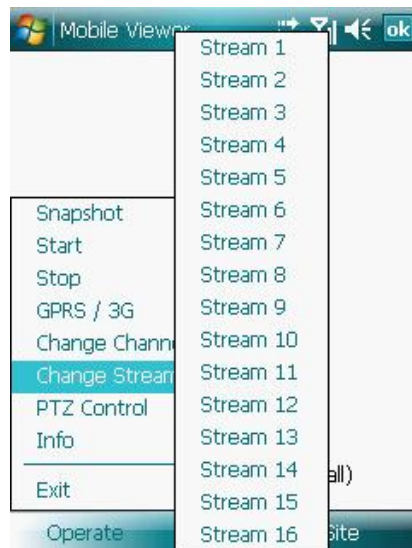
**2. Video Server uses “Change Stream” to switch the channel.**





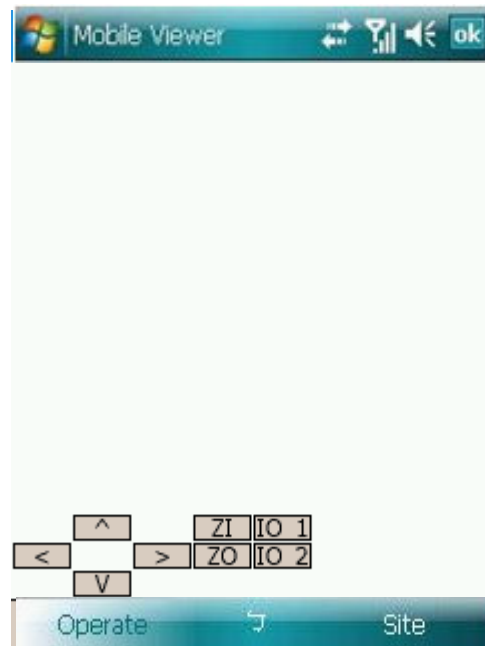
Channel 1 (switch to channel 1)  
 Channel 2 (switch to channel 2)  
 Channel 3 (switch to channel 3)  
 :  
 :  
 Channel 16 (switch to channel 16)  
 Channel All (switch to 16 channel format).

**f. Change Stream (Change channel)**

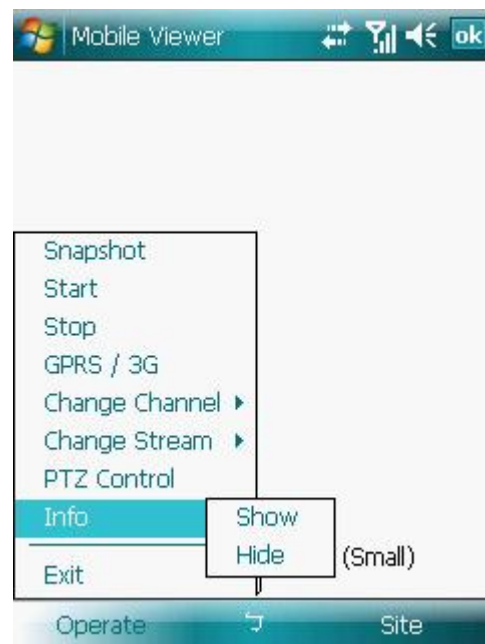


Stream 1 (switch to Stream 1)  
 Stream 2 (switch to Stream 2)  
 :  
 :  
 Stream 16 (switch to Stream 4)

**g. PTZ Control** (Call PTZ control interface)



**h. Info** (Click to show IO control)



Show (show the information)

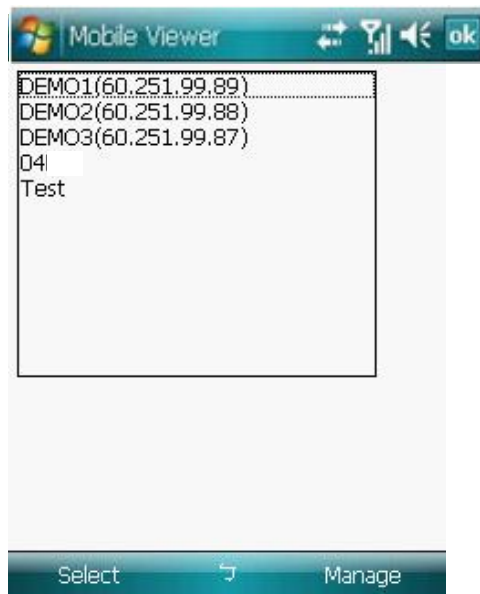
Hide (hide the information)

**i. Exit**

**Site**(Go to Site List)

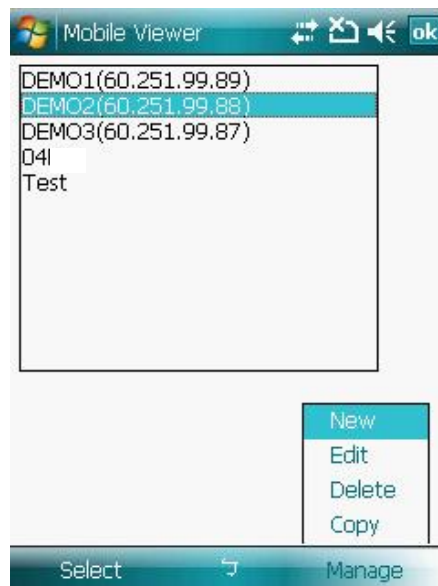


## 2. Site list screen:



Select (Get back to Live view by click on a selected site).

Manage(Call submenu to configure)

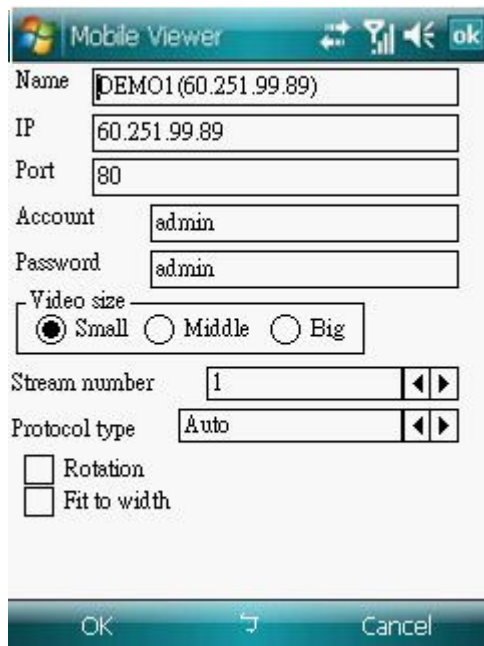


1. New(Add a new site and it will switch to "Site Data" menu.)
2. Edit (Switch to "Site Data". The user can edit the information).
3. Delete (Delete a selected site. Click **Yes** or **No** button on the pop-up screen to confirm the deletion.)



4. Copy(Copy a selected site)

### 3.Site data



1. OK (Save the information and it will switch to Site List).
2. Cancel (Switch to Site List without saving the information).

Name	Site Name.
IP	IP Address or Domain Name.
Port	Internet Port.
Account	User Name.
Password	Password.
Video Size	The size of the video.
Stream No.	In the Multi-Stream device, it is optional to switch the stream number.
Protocol type	There are different protocol types (Type 1 H-Protocol, Type 2 W-Protocol, Type 3 A-Protocol, Type 4 S-Protocol, Type 5 R-Protocol). The default is Auto.
Rotation	Rotate the video.
Fit to width	Adjust the image size to fit the screen size.