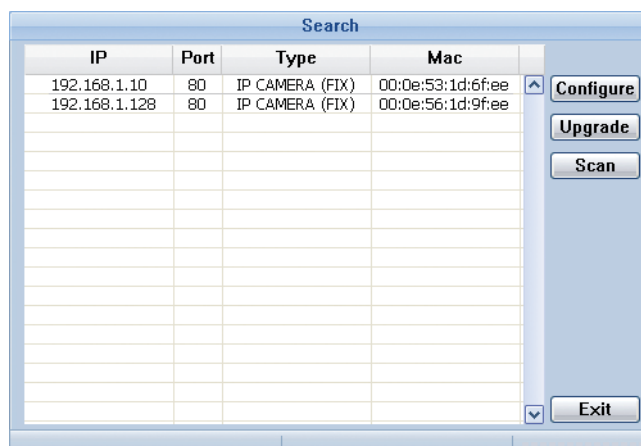


HOW TO USE IPSCAN

IPScan is a small tool to help you quickly search all the network devices (DVR or camera) which are in the same domain as your computer, and configure their network setting.



■ Scan

When this program is activated, it will automatically search all the network camera(s) or DVR(s) which are in the same domain as your computer, and list all the found devices.

To search the network devices again, click "Scan".

■ Configure

To change the network setting of the found device(s), select one device from the list, and click "Configure" to display the setting page.

The screenshot shows the configuration window for a selected device. It contains the following fields:

Server IP	192 . 168 . 1 . 10	DNS	168 . 95 . 1 . 1
MAC Address	00:0e:53:1d:6f:ee	Web Port	80
NetMask	255 . 255 . 255 . 0	User Name	
GateWay	192 . 168 . 1 . 1	Password	

An 'OK' button is located at the bottom right of the window.

Change the network setting of the selected device if you already know what configurations you need to change to match your network environment.

At last, enter the user name and password of your device to confirm your changes, and click "OK".

Note: The user name and password are the ones used to log into your device remotely.

The default user name and password are both "admin".
