

IPC 批量升级工具说明

IPC batch upgrade tool description


1. 请先将 IPC 接入局域网，确保 IPC 和电脑在同一局域网。IPC 默认 DHCP 打开。

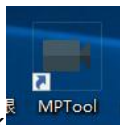
Please connect the IPC to the LAN first, and make sure that the IPC and the computer are in the same LAN. IPC DHCP is turned on by default

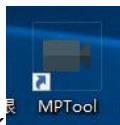
2. 请安装 MPTInstaller-1.2.2.507.exe 程序。

Please install the MPTInstaller-1.2.2.507.exe program.



3. 双击 ，进入程序界面，如果摄像机和电脑在同一局域网，稍等自动会出现网络内 IPC。

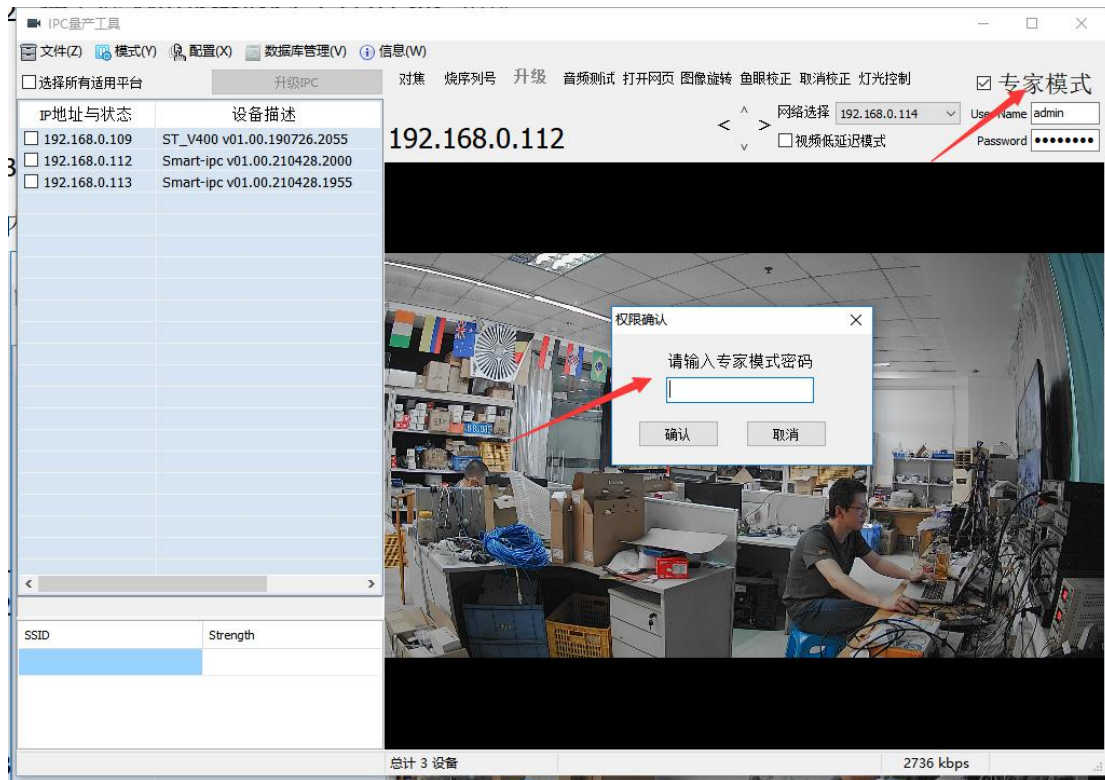


Double click ，Enter the program interface, if the camera and the computer are in the same local area network, the IPC in the network will automatically appear after a while.



4. 选择“专家模式”，输入密码：20150422，确认。如下图：

4. Select "Expert Mode", enter the password: 20150422, and confirm. As shown below:



5. 点击“升级”，如下图

5. Click "Upgrade", as shown below



选择要升级的.img 文件， 再点击“ok”

Select the .img file to be upgraded, and then click "ok"



在左边列表选择要升级的 IPC，也可选择多台 IPC，然后点击“检测升级 IPC”

Select the IPC to be upgraded in the list on the left, or multiple IPCs, and then click "Check to upgrade IPC"



继续点击“升级 IPC”

Continue to click "Upgrade IPC"



稍等几十秒钟，升级完毕，IPC 会重新启动，画面更新。

Wait for a few tens of seconds. After the upgrade is complete, the IPC will restart and the screen will be updated.