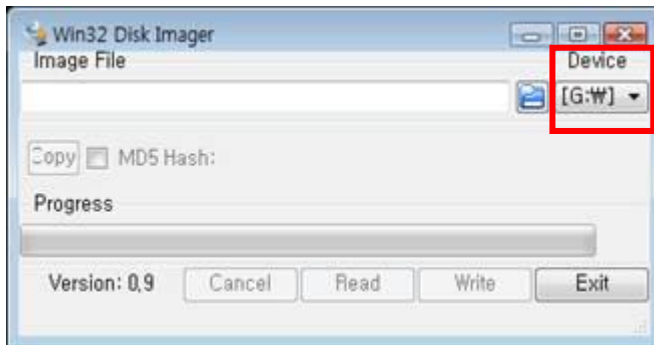
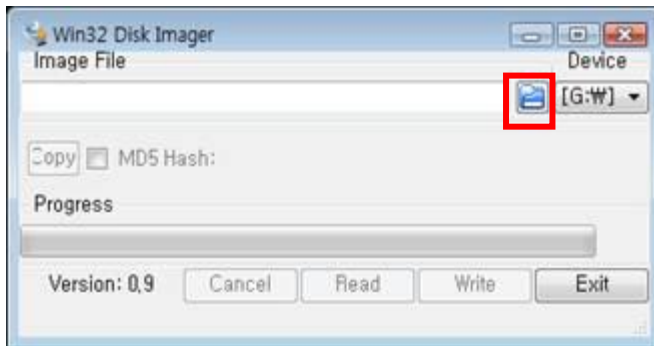


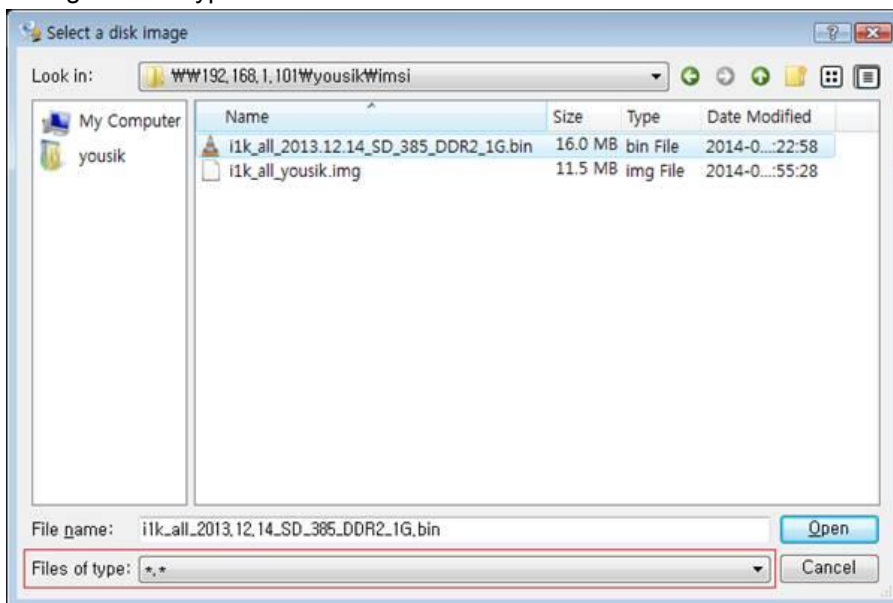
1. Please prepare S/W to write upgrade file to SD card.
2. Please prepare upgrade file.
3. Insert SD card and connect with PC
4. Operate win32 Disk Imagr S/W
5. Select device (SD card)



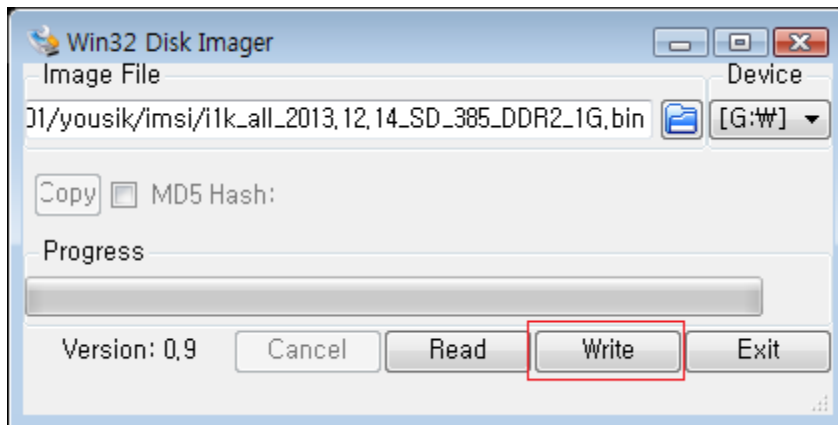
6. Open folder and select upgrade file (.bin)



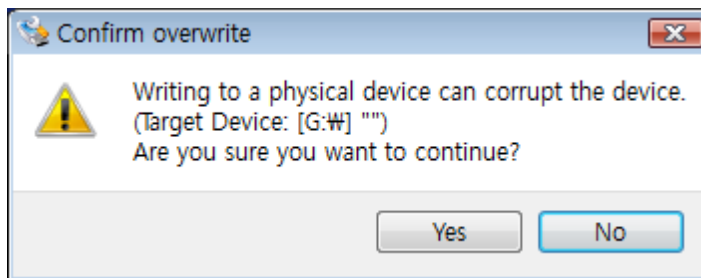
7. Change files of type to "*.bin"



8. Click Write button



9. Just click "YES" button



10. Finish

