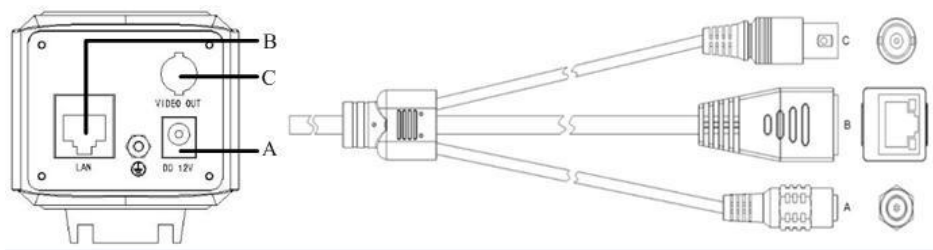


This document is the Quick Start guide, For more information, please refer to the user manual.

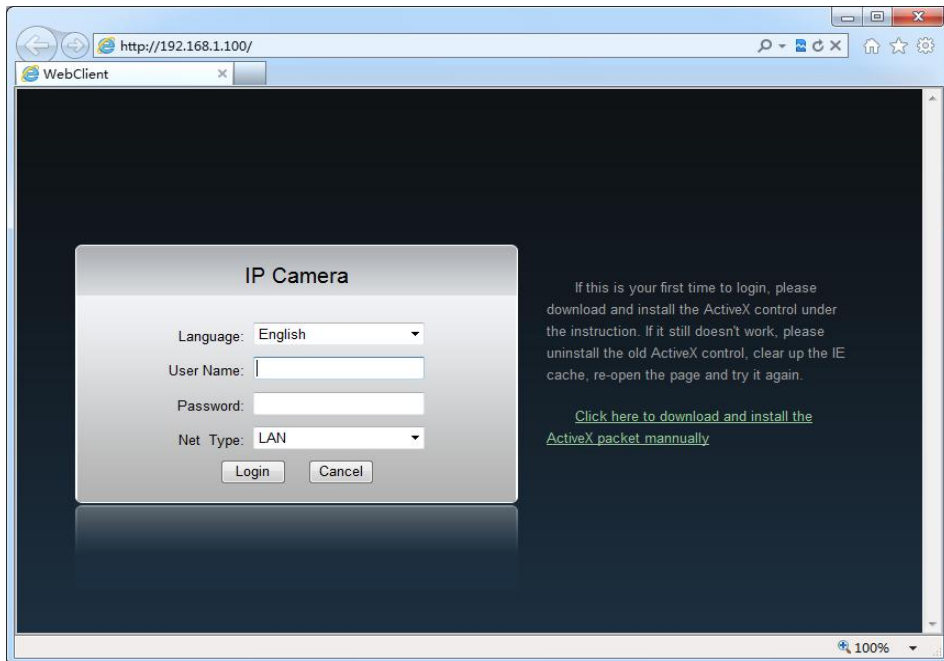
**Network camera interface**



Interface Description:

Interface	Explanation	
A	DC 12V	12V DC power supply
B	LAN	Standard network RJ45 interface
C	VIDEO OUT	Analog video output interface, standard BNC connector

**Login equipment**



**Note: Your computer must be in the same network address range and IP Camera to communicate, so you may need to change the IP address of the computer to log on to the server.**

Input http:// Ip address into the login page. Enter the account number and password. The factory default IP address:192.168.1.100. Default account:admin, password:admin First login you will be prompted to install the OCX, as shown below. Click Run> button, install the OCX before normal use.



Installation is complete, refresh the IE and enter the username and password to log into the preview interface.

**IE Preview interface**

