

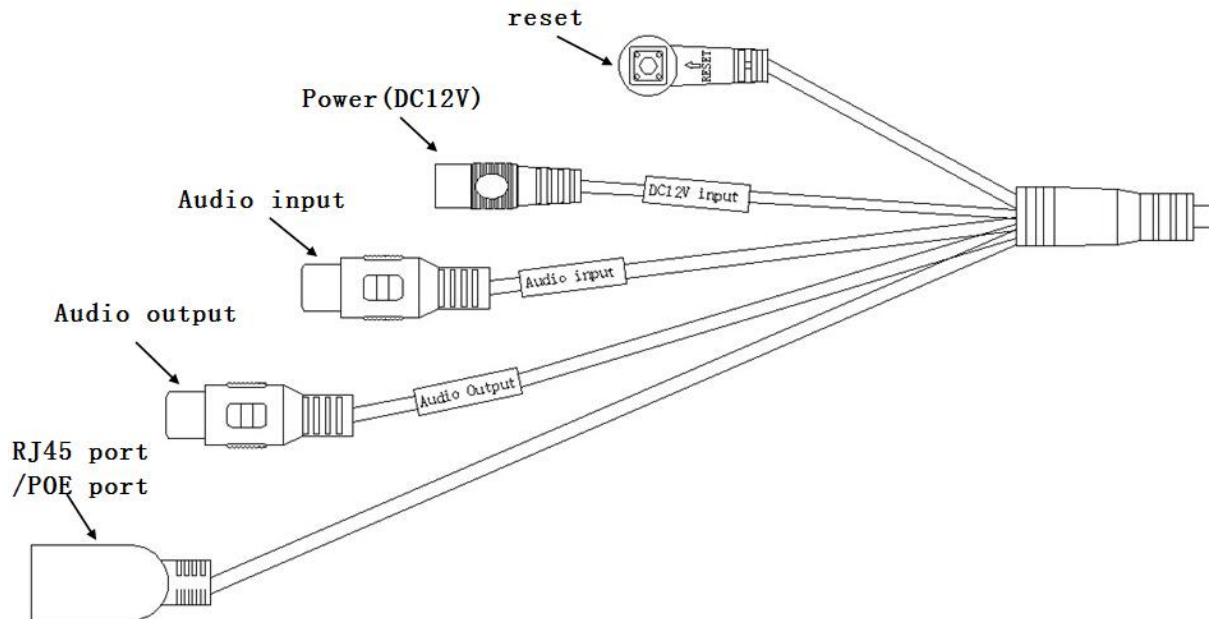
Thank you for choosing our products !

1、 connecting devices :

The IPC could supports POE/DC12V power supply. Cable and POE power supply integrated, when using power supply DC12V pls notice the positive and negative.

Note: POE power and DC12V power supply can not be used at the same time !

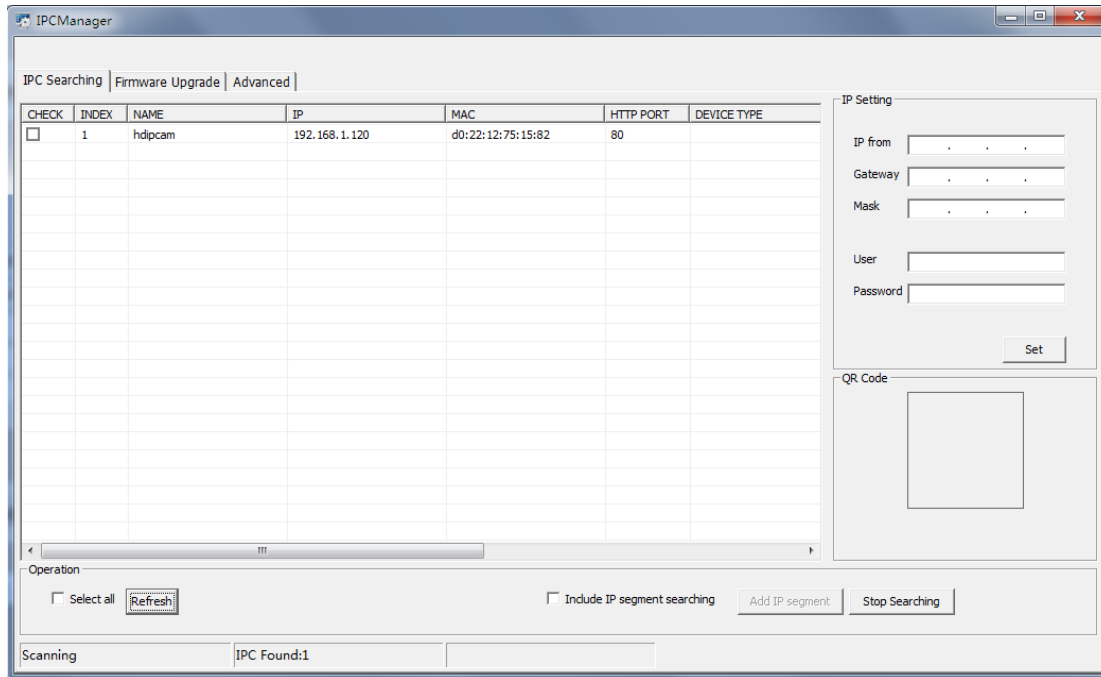
Cables connecting as showed below :



Item	Cable color	Cable name	Cable using guide
1	black	RJ45 port , POE port	1. Connect the power supply. Need to match the corresponding regulated POE power supply, POE switches. 2. Ethernet access device, enabling data transmission and external network access.
2	black	Audio output	external speakers, headphones, etc are available
3	black	Audio input	Enable to connect external pickup
4	black	DC 12V power port	Connect power, pls use DC 12V(2A and above)adapter or regulated DC12V centralized power supply.
5	black	Reset key	return to factory settings for camera parameters

2、 Configuration of Networks

Both network camera and PC are connected to the same switch/router. Please run the “DeviceManager.exe” tool (you can find it in CD) on your PC. This tool will search the IP camera automatically, and show you a list of you local network cameras.



3、 Quick Configuration:

When users browse video images using the camera, should firstly adjust the IE browser of monitor or other video device, and then set the system functions according to the interface prompts.

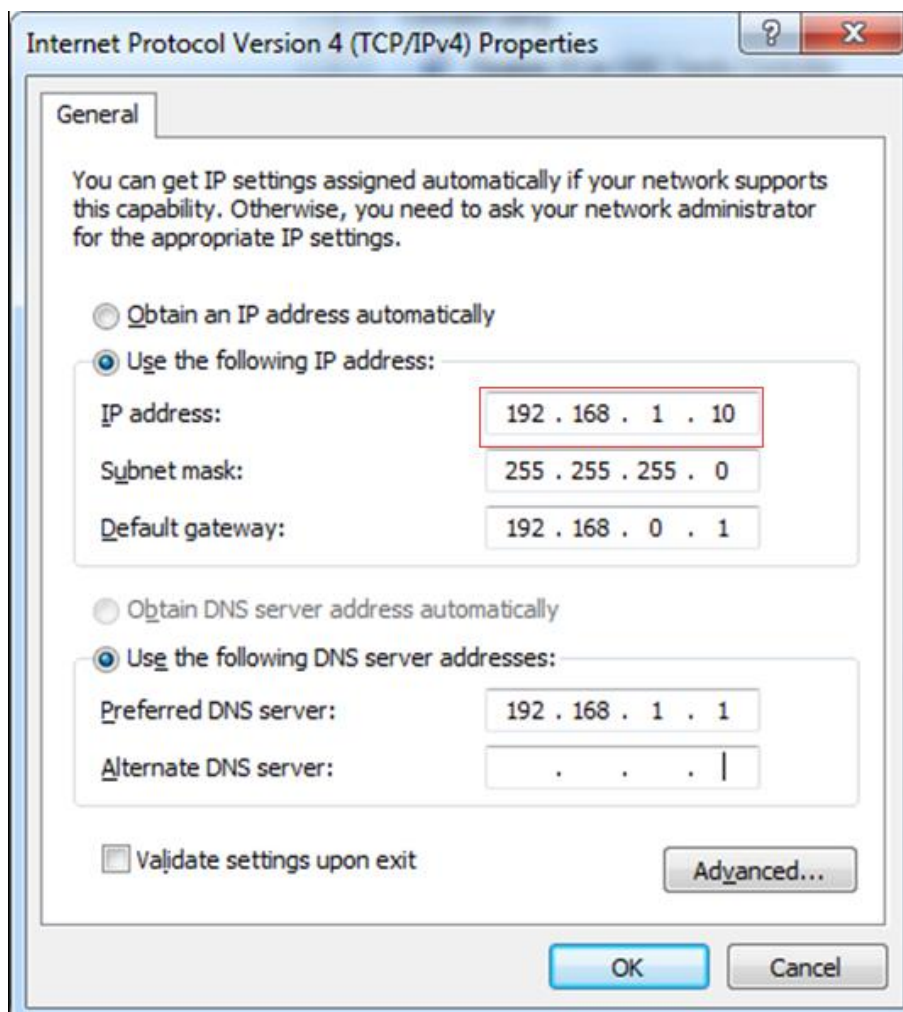
■ 3-1 Connect device:

Checking whether the camera is properly connected to the computer, and can connect to the network.

The IP address of cameras ,computers and other back-end devices (such as NVR, HVR) should be in the same subnet.

◆ How to set up the computer IP :

My computer > My Network Places > View Network Connections > Local Area Connection Properties > TCP/IP protocol



Red box for the computer's IP address, the first three segments of the digital should keep the same with the IP address of camera and back-end equipment, digital of segment 4 can arbitrarily set no duplicate between 0-255 number.

Subnet Mask and Default Gateway pls set the same with camera and back-end equipment.

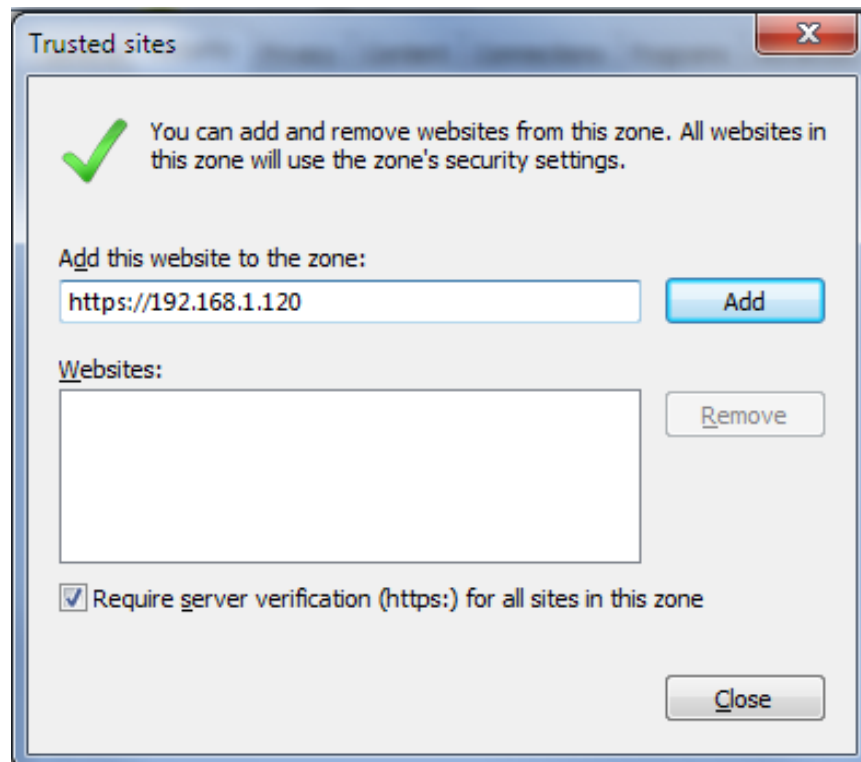
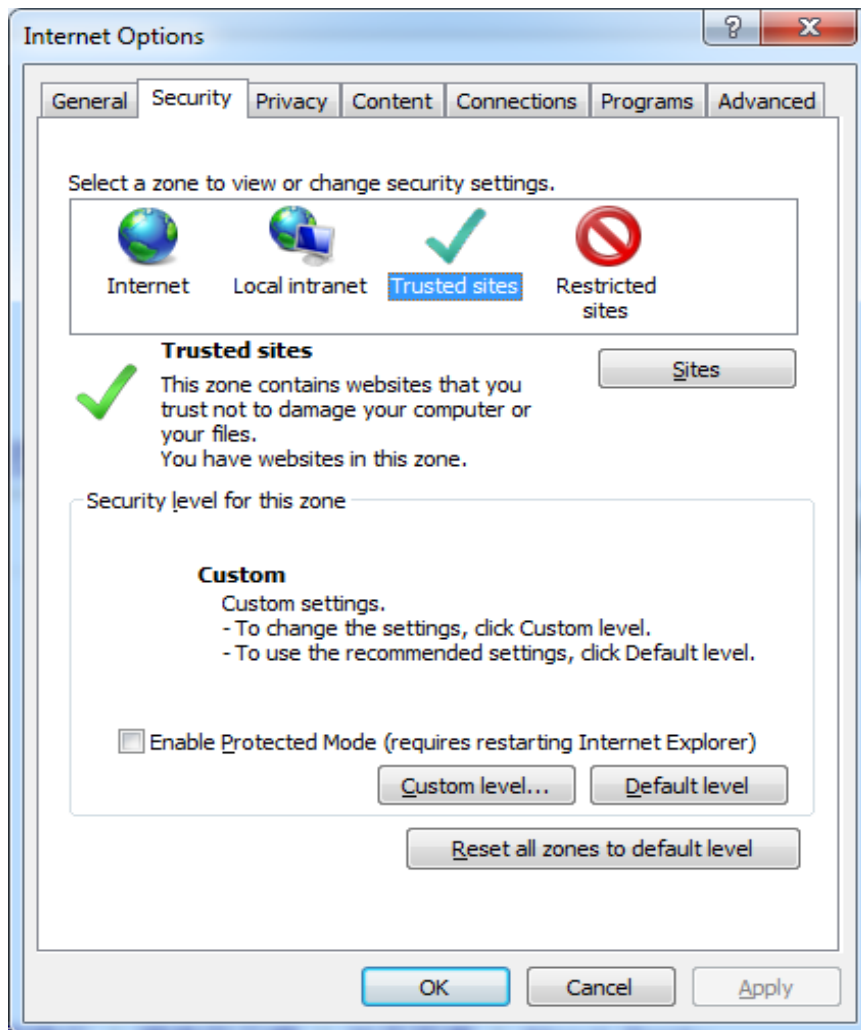
We HD IPC factory default setting IP : 192.168.1.120 , Subnet Mask : 255.255.255.0 , Default Gateway : 192.168.1.1

■ 3-2 Using a browser to access the video

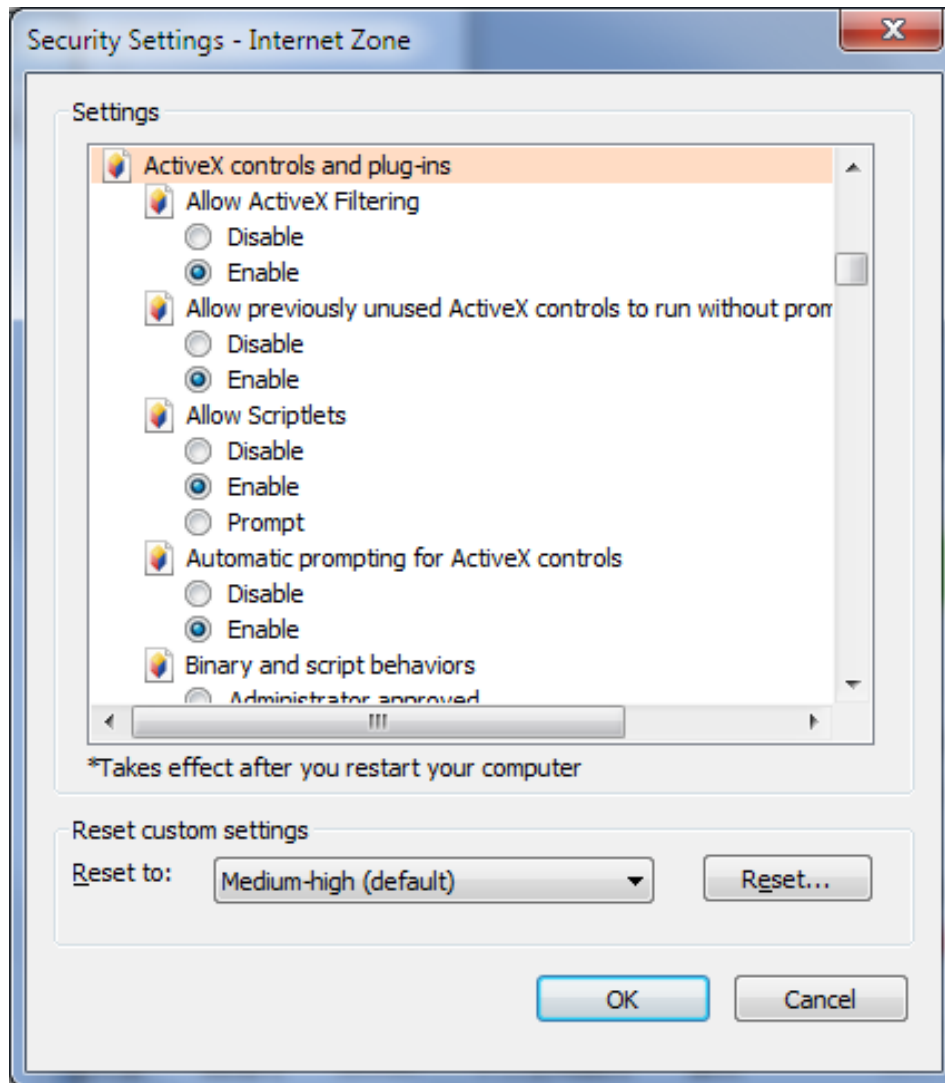
The camera can support multiple browser access mode, for example : IE、 Chrome、 Firefox etc. This section describes how to use IE to quickly access the IPC video images.

When using the IE browser to access the device the first time, follow the instructions below :

- ◆ **3-2-1.**Tools > Internet options > safety > trusted sites > sites, click “add” , add device IP address to be trusted site, as following:

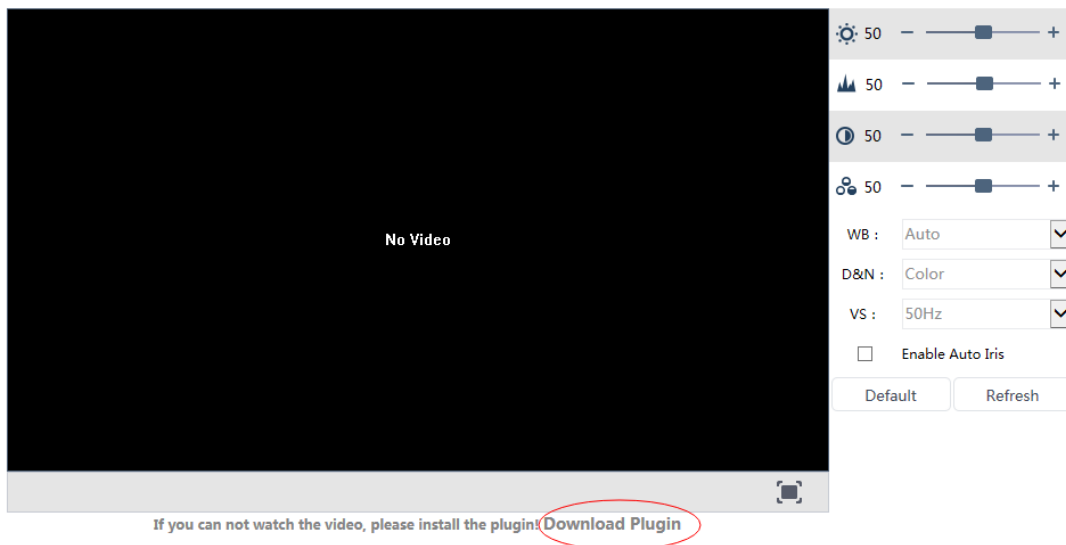
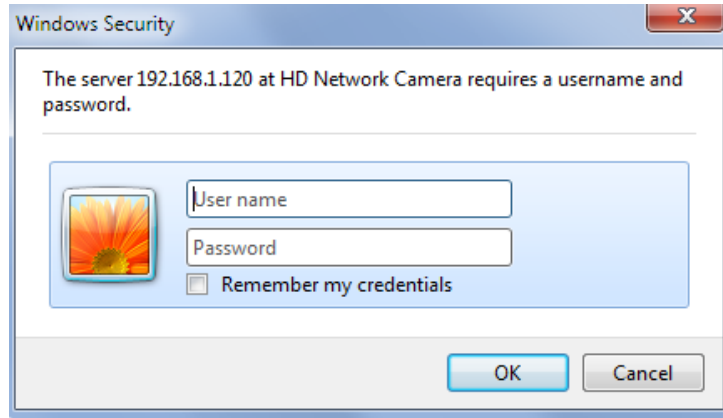


- ◆ **3-2-2.** Set your browser security level. Open IE browser, menu column > Internet options > safety > Internet > custom level (C) ,set ActiveX controls and all functions under controls to start using:

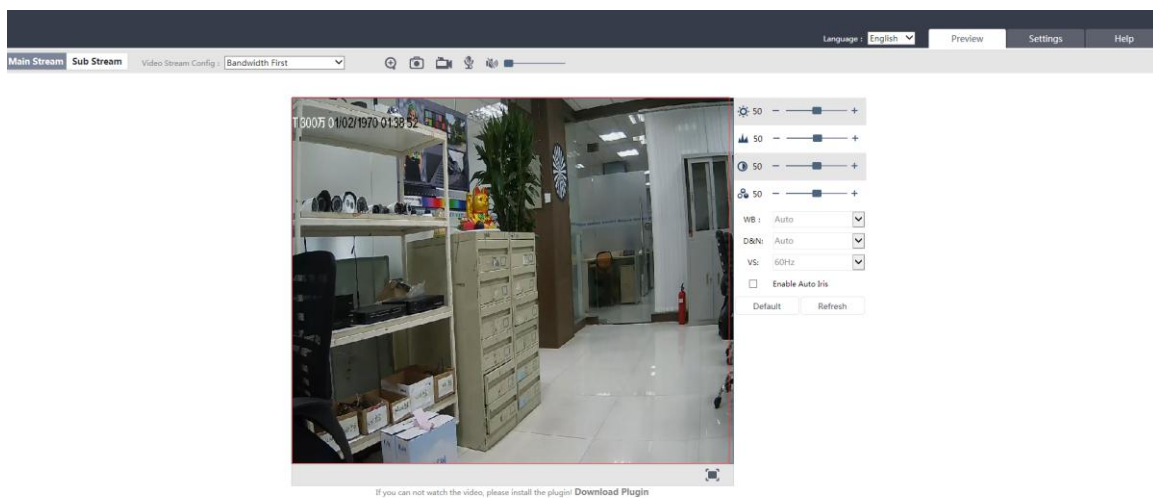


3-2-3.The camera system will start after power-on for about 30 seconds, open the IE browser, and enter the IP address : 192.168.1.120 of the camera in the IE address bar. Input the user name and passwords at the login window: **admin/1111** (for IE interface login the user name is : Admin , for the CD software login the user name is : admin), click "login", wait a moment to enter the preview screen to connect the main and sub streams or other streams screen. (If it is the first time you use this product, you need to download an ActiveX control)

attention: use the the IE browser together with Windows operating system, make sure version 6.0 or above.



- ◆ **3-2-4.** Click <login> button to login IPC client software main interface, the main system interface is shown below:



【prompt】: If you can not display video correctly, please re-follow "IE Settings" method to install the ActiveX controls!

4、 adjust device IP:

The product can adjust the IP address in the network video browser: Settings-> Network -> TCP/IP.

If you automatically obtain IP, choose the option of automatically obtain an IP address; If you manually enter the IP then set according to the actual situation, as shown below : enter the adjust required IP address and gateway (IP and gateway should keep the same network segment), click "Save", the IP camera can be set successfully after automatically restart.

Note: After the success of the new IP settings, ensure that the PC and the new IP address of the device to keep on the same network segment. In order to enter the online video browser, should enter new IP in IE.

The screenshot displays a web-based configuration interface for a device's network settings. On the left is a sidebar menu with categories: Video & Audio, Network (selected), Storage, Event Server, Safety, System, and Log. Under the Network section, 'TCP/IP' is highlighted. The main content area is titled 'Basic Network Status' and contains three sections: 'Current Network Settings' with a 'View' button; 'Network Settings' where 'Use Static IP' is selected, showing fields for IP address (192.168.1.151), Subnet mask (255.255.255.0), Gateway (192.168.1.1), Primary DNS (192.168.1.1), and Secondary DNS; and 'DDNS Settings' with a 'Set' button. At the bottom are 'Save' and 'Reset' buttons.

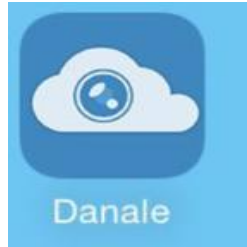
5、 The basic set operation of mobile client:

When install the Danale mobile client software on phone, there are android version and ios version , could download by searching Danale on download library of mobile

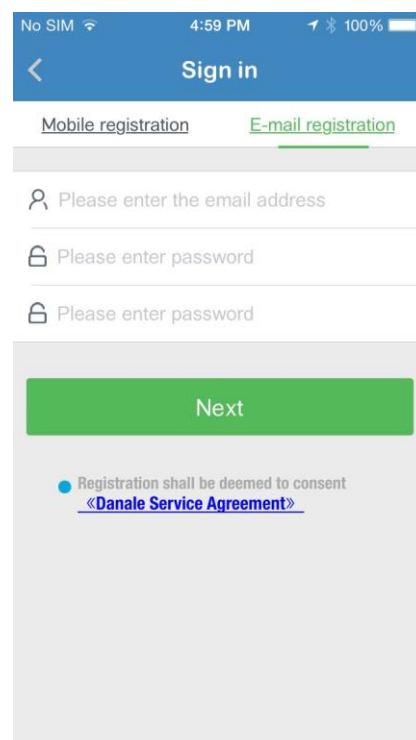
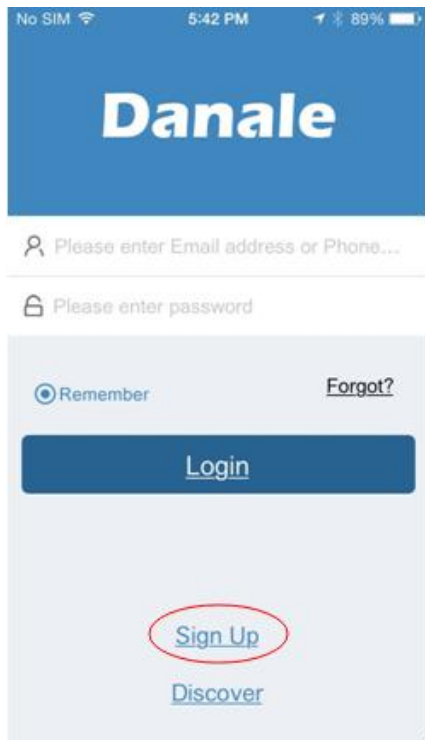
app ;

5-1 register a new account

5-1-1 Click the Danale mobile client on mobile desktop, to enter Danale P2P mobile client ;

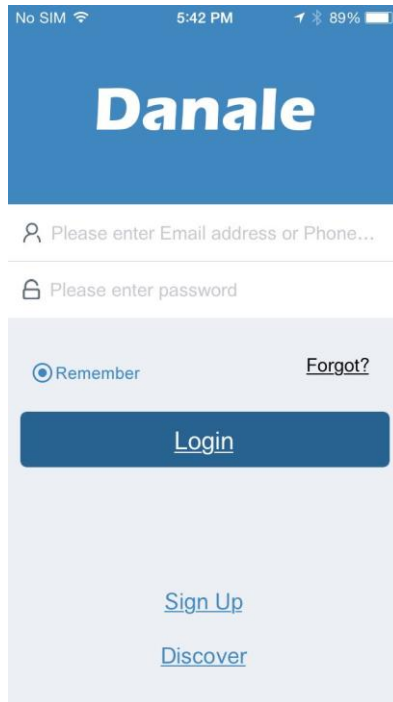


5-1-2 Click the bottom right corner of the client login interface "Sign Up" to register a new account, use the mobile phone number or email to register for, in the user enter a phone number or E-mail account, password and repeat the password input password, click on the next, according to the prompt for authentication code, registration completed.



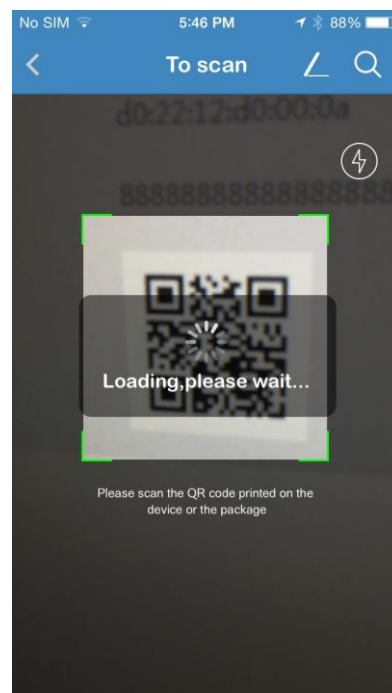
5-2 Add advice

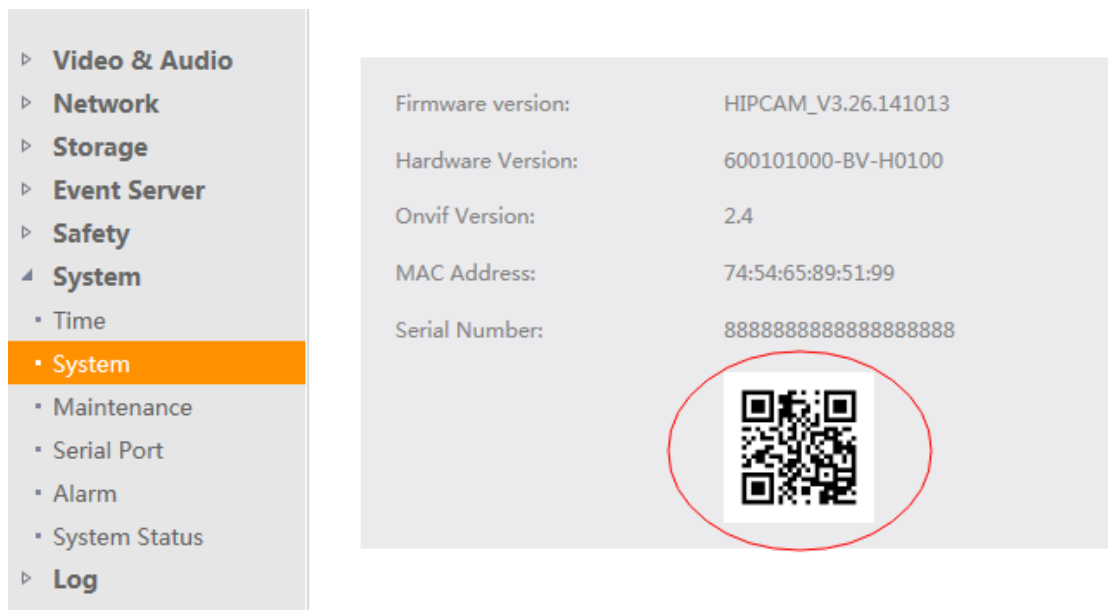
5-2-1 after successfully registering a new user, enter the username and password of the already successfully registered ones, click "Login", to enter Danale main client interface;



5-2-2 Three ways to add device

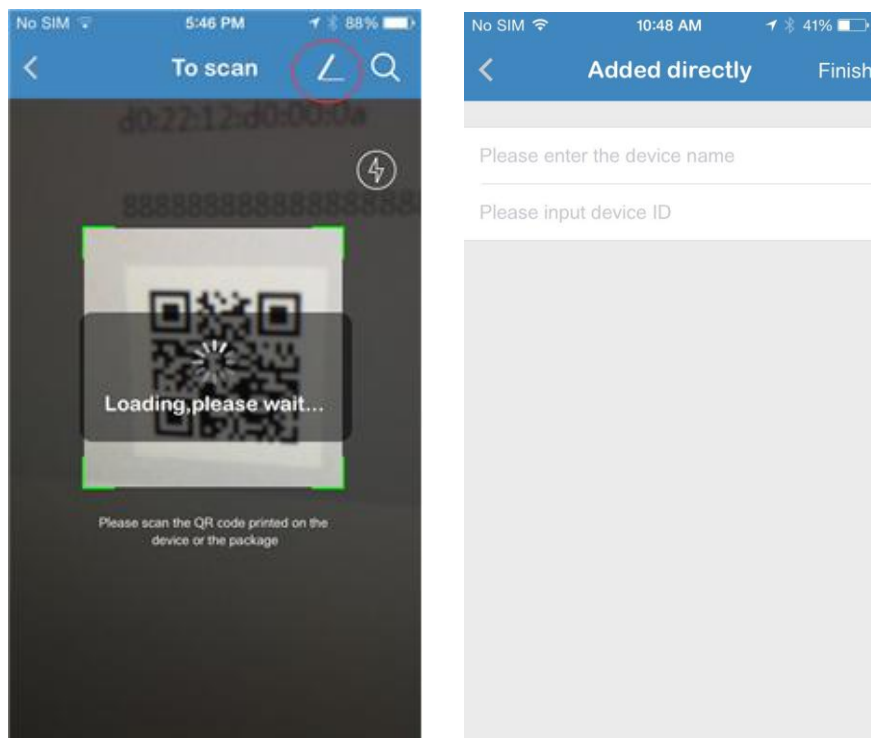
- ◆ scan the qr code to add : In the main interface, click add device or click on the "+" button in the upper right corner of QR code scanning into the interface, the QR code can be added above the scanning equipment, but also access to the IPC, enter Settings-> System-> System information, scan the page QR code can be added;



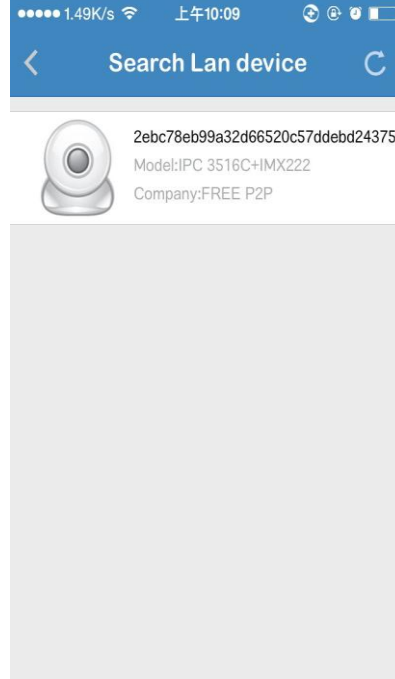
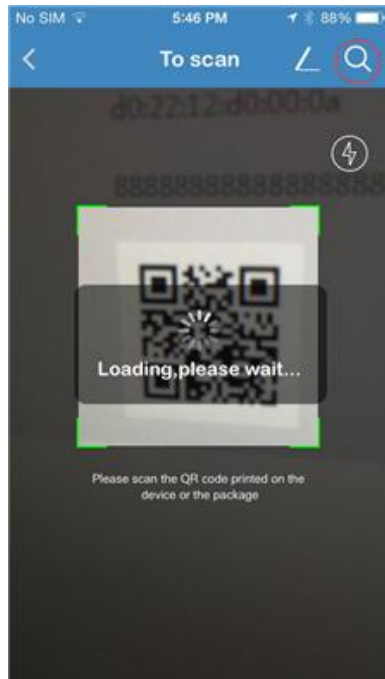


The IPC qr code interface

- ◆ Added directly: can be in the qr code scanning interface, click the add button in the upper right corner, added directly into the interface, the device name in the input and the serial number of the device, click finish;

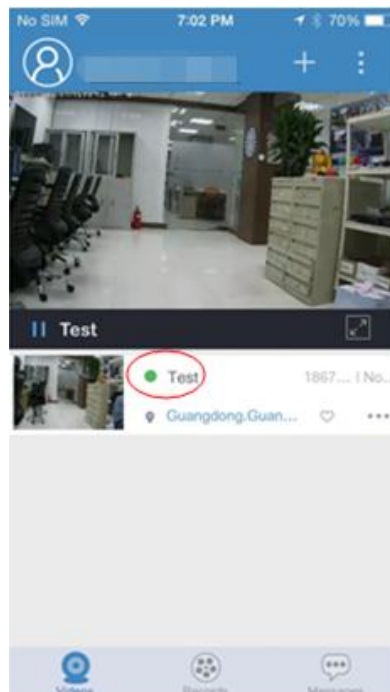


- ◆ LAN search added: can be in the qr code scanning interface, click the scan button in the top right hand corner, enter search LAN device interface, when our camera equipment and our mobile terminal in the same local area network, we can search the local area network (LAN) option to add equipment;

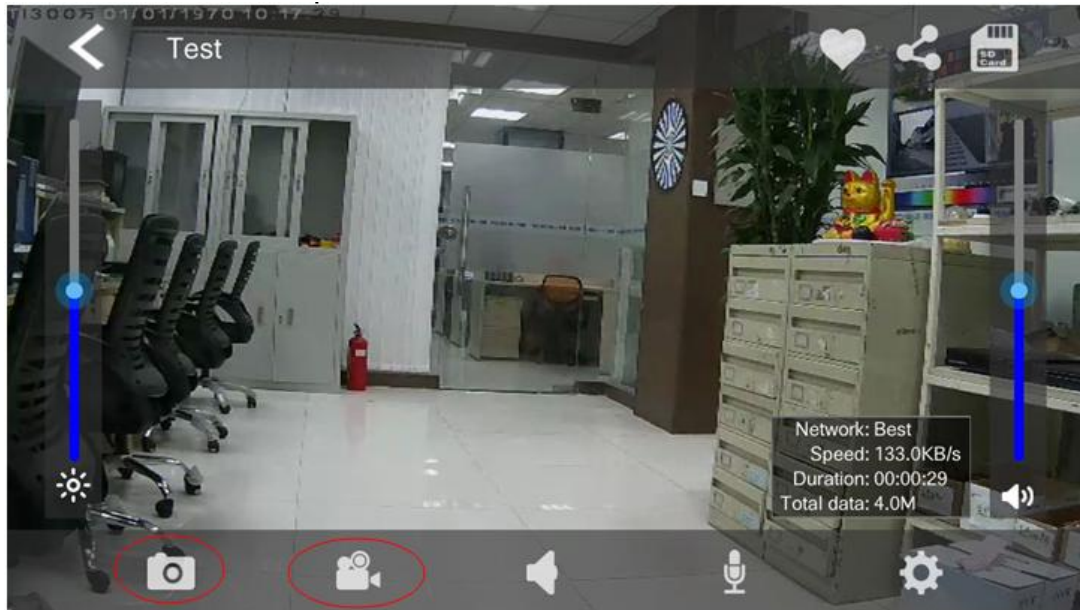


5-3 The mobile client operation method

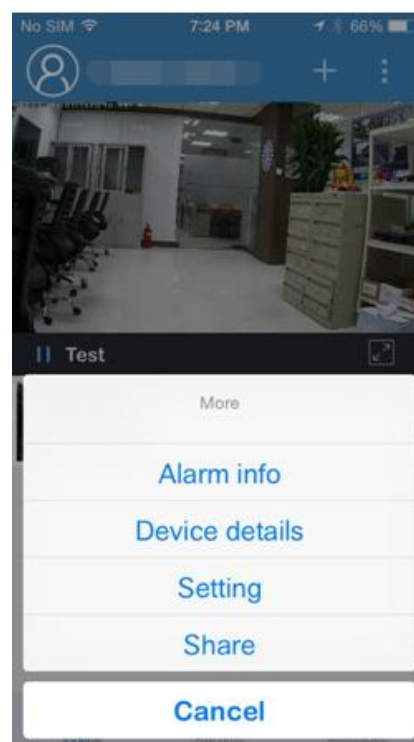
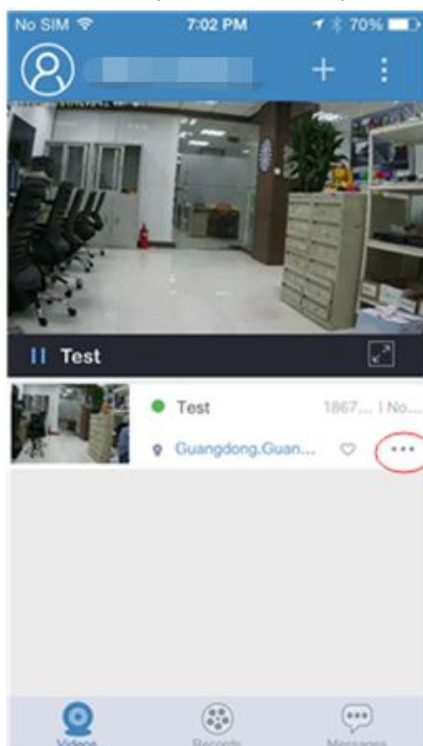
After the success of the device to add, enter the main interface Montana P2P mobile client, circled in shape for the green that device that has been registered successfully in Montana server can normal preview, if you don't online is grey device, can't watch the video;



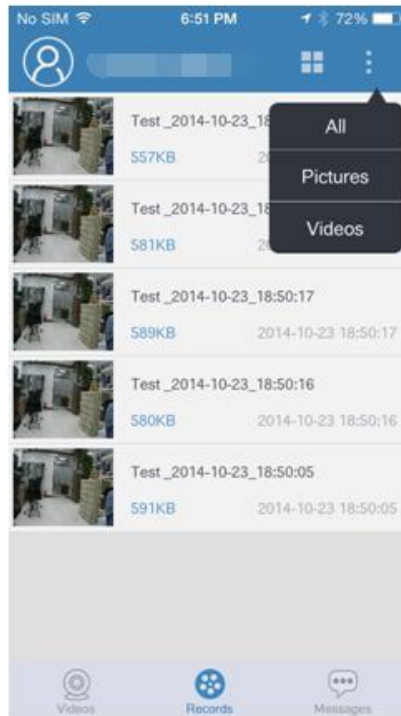
5-3-1 Device to capture and video :in the preview screen, click on the video right below the full screen button to enter full screen mode, the picture at the bottom of the camera and video camera icon can be captured and video respectively;



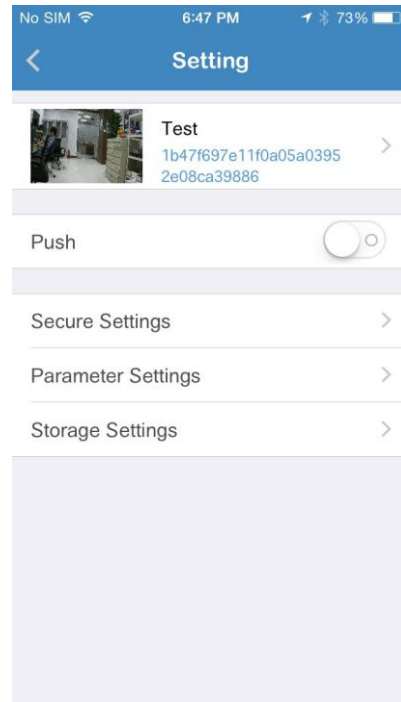
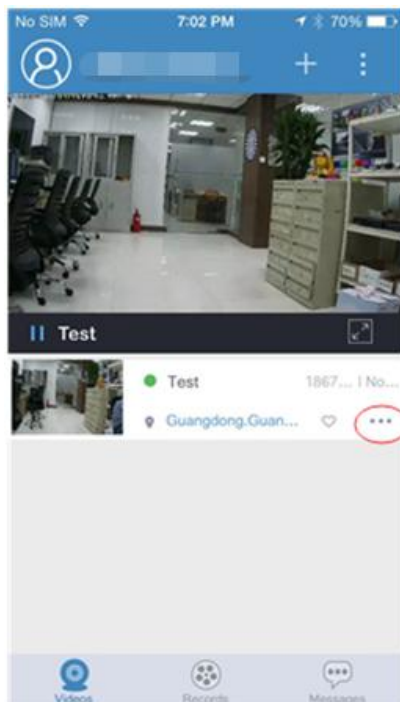
5-3-2 Device video sharing:in the preview screen, click on the red pop-up message box, choose to share;Can also share in full screen mode click in the top right corner of the button, the current equipment share Montana or all of the user to specify friend, to share the user can click on the upper right corner of the button in the main interface, select share can view, share video;



5-3-3 Device document:management:interface to view images and video files can be in the Records, click on the top right corner to filter to view the pictures and video;



5-3-4 Device Settings:click the red circle, choose the "Setting" to enter the camera interface, you can set the camera;



For example, opening the parameter settings, the camera parameters can be adjusted;



6、 Appendix FAQs :

Precautions	Corresponding measures
Client or WEB could not login	Client could not install or not work normally Graphics driver is not installed properly The problem of internet connecting or settings Username or password incorrect
Power adapter	The power range and rated power of power adapter not meet the requirements Power adapter not use under proper humidity range (0°~40°)