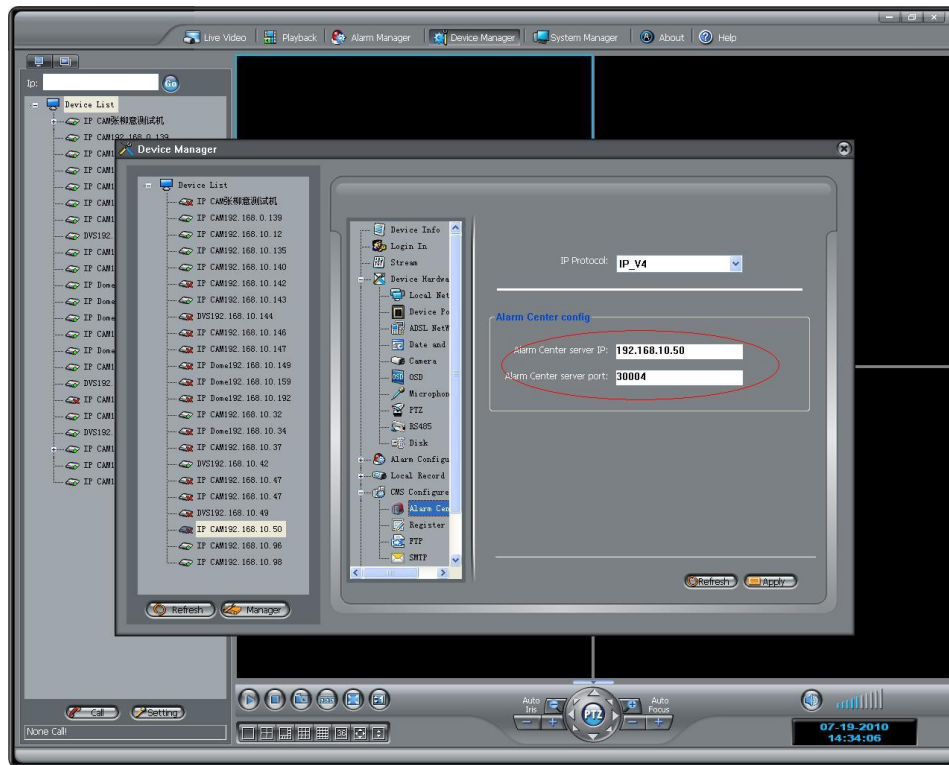


Before doing the following steps, be sure the testing of hardware (alarm –in and alarm-out device) is OK.

1: How to receive the alarm-in signals on VMS software?

You can do it as follows:

(1). Configure “Alarm Center”.



Set the IP of the PC where the VMS software runs on as the Alarm Center Server IP, and set the port it listen to. Port 30004 is used in default.

(2). Listen to the port

Open a socket to listen to the port you set in the last step. If you can receive the alarm-in signals from the IP camera, you can parse the alarm-in message as the sample code did in the attachment. The sample code bind the local PC and listen to 30004, you can modify it.

Note:

a. Our NVMS software listens to port 30004 in default. If you select this port as the alarm port, you'd better close NVMS when testing in order to avoiding port conflict.

b. We can mainly deal with two types of alarm: I/O and motion detection. If you want to test the I/O alarm, you'd better disable the motion detection.

2. How to make the alarm-out work after receive the alarm-in signals?

We recommend you configure the linkage parameters as we discussed before. The alarm-out will work automatically if it detects the signals. Or you can call function Remote::setAlarmOut to make the alarm-out device work.

Note:

It is necessary to configure the alarm-in and alarm-out device parameters first to both of the two ways.