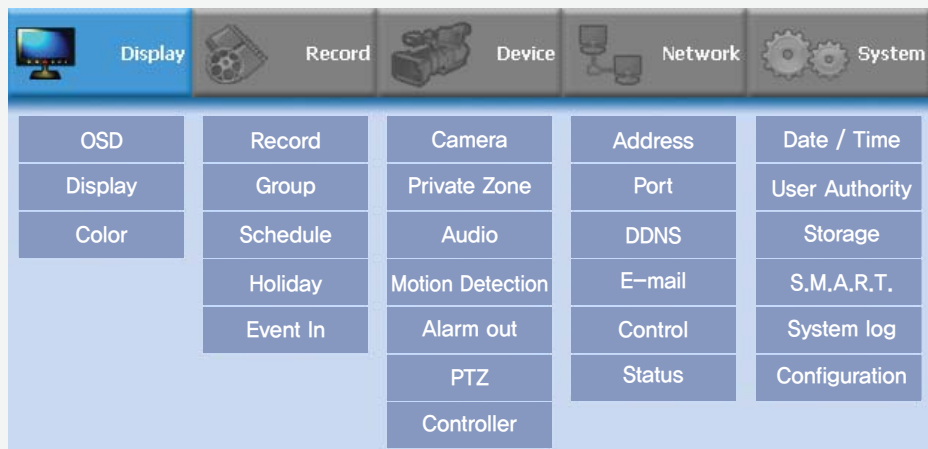


## • SETUP MODE

To enter the setup mode, click the right button of mouse and choose 'Setup' or push the 'MENU' button on the remote controller.



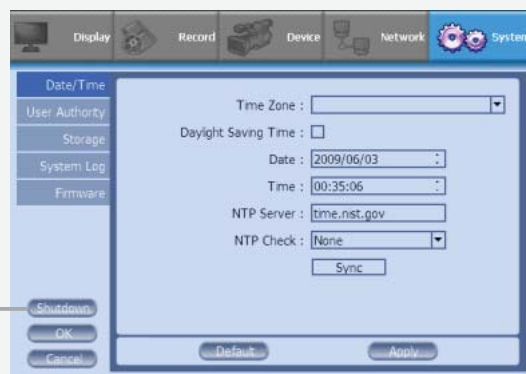
The screenshot shows the main menu of the setup mode. At the top, there is a navigation bar with icons and labels for 'Display', 'Record', 'Device', 'Network', and 'System'. Below this is a grid of menu items:

Display	Record	Camera	Address	Date / Time
OSD	Record Group	Private Zone	Port	User Authority
Display	Schedule	Audio	DDNS	Storage
Color	Holiday	Motion Detection	E-mail	S.M.A.R.T.
	Event In	Alarm out	Control	System log
		PTZ	Status	Configuration
		Controller		

## • SHUTDOWN

### SHUTDOWN

To avoid the hard drive crash, we recommend to shutdown before turning it off. Go to MENU → SYSTEM . Push the 'Shutdown' button.



To obtained the best performance and ensure years of trouble free use, please read completely the user's manual in the CD.

# DIGITAL VIDEO RECORDER

## Quick Manual

- 6, 12 and 20ch Configuration Optimized for Wide screen. (4, 8 and 16 Ch Configuration are also Available).
- VGA and Mouse Connection up to 100meter (350ft) (Patent Pending).
- Built in Camera Power Supply.
- Convenient, Safe and Covert.
- Touch screen LCD monitor (optional).

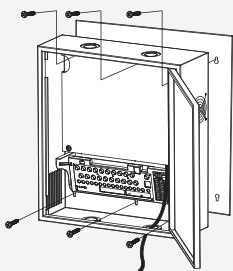
## • BEFORE YOU START

Users should read this manual carefully for proper use. Contents in this manual may be changed according to the specification change and feature improvement without any notification. This manual shall never be copied without prior agreement and violating this may be a reason for legal punishment on piracy. If there is any incorrect or insufficient content in this manual, notify it to Customer Support Center. Please check that all the following accessories are included.

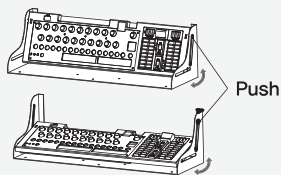
- ▶ 1 mouse & receiver with adapter
- ▶ 1 Program & Manual CD
- ▶ 1 Remote controller & 2 AA battery

## • INSTALL

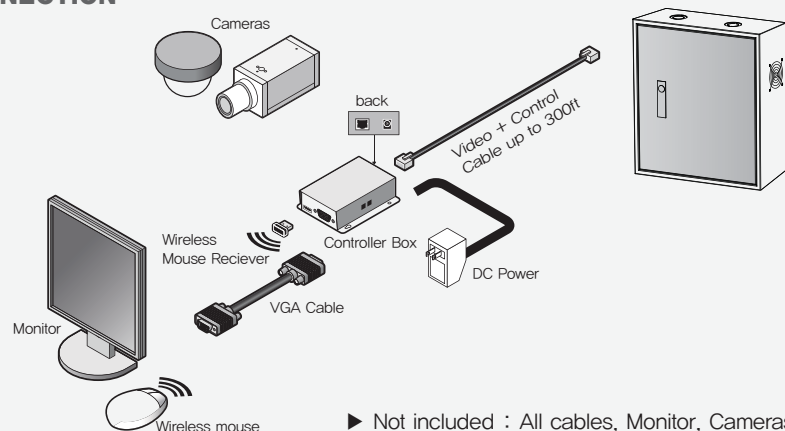
1. Place and fix in top three screws on a desired position on the wall, first. Then, match upper three holes on back of DVR to the three top screws and hang the case on. Place and fix in three bottom screws and connect all the cables.



2. To adjust I/O panel position, push in the side button as shown in the picture.



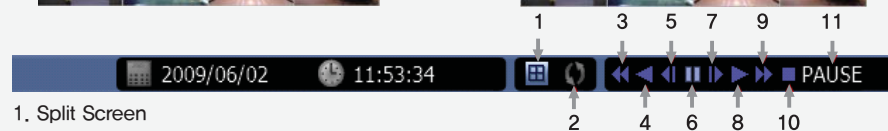
## • CONNECTION



## • LIVE SCREEN

2009/06/02 11:53:34 No HDD	
Date	By Right-Clicking anywhere on Live Screen, you may view the Live Popup Menu. By using the Live Popup Menu, you can quickly jump to the necessary configuration and settings.
Time	
Screen Split mode change	
Sequence activation	
Hard drive usage	
Lock/ Unlock indicator	
Scheduler activation indicator	
Audio out channel indicator	
Mute indicator	
Setup	
Split	
Instant Replay	
Search	
Backup	
PTZ	
Zoom	
Sequence	
OSD	
Lock	

## • SEARCH MODE



1. Split Screen
2. Sequence
3. FB (Fast Backward): FB×2, 4, 8, 16, 32, 64 times faster
4. Playback : Backward normal speed
5. SB (Slow Backward):SBx1/2, SBx1/4
6. STILL (Pause) / Frame advance
7. SF (Slow Forward):SFx1/2, SFx1/4
8. Play : Forward normal speed
9. FF (Fast Forward): FF×2, 4, 8, 16, 32, 64 times faster
10. STOP : Stops playing and returns to LIVE Screen.
11. Status information.