

i-CEN'S



USER'S Manual

2010. 11. 15. Rev1

Table of Contents

Overview of i-CEN'S software.....	3
1 Introduction of i-CEN'S.....	3
2 Key Features.....	4
3 Key Benefits.....	4
4 System Specification.....	5
5 Application.....	6
Software Installation.....	7
1 Installation of i-CEN'S.....	7
2 Uninstallation of i-CEN'S.....	9
Operation Guide.....	10
1 Program Start and Description of Tool bar.....	10
1.1 Running the program.....	10
1.2 Log in.....	10
1.3 Brief Description of i-CEN'S window.....	11
1.3.1 Program Menu.....	12
1.3.2 Tool Bar of Program.....	12
1.3.3 Tool Bar of Live View.....	13
1.3.4 Tool Bar of Search and Playback.....	13
1.3.5 Tool Bar of E-map Control.....	14
2 Program Setting.....	15
2.1 i-CEN'S System Configuration.....	15
2.2 i-CEN'S Event Configuration.....	16
2.3 i-CEN'S User Configuration.....	17
3 Live Display.....	18
3.1 Group and site configuration.....	18
3.2 Live Display configuration.....	19
3.3 Live Display Control.....	20
4 Search and Playback.....	21
4.1 Search.....	21
4.2 Playback.....	22

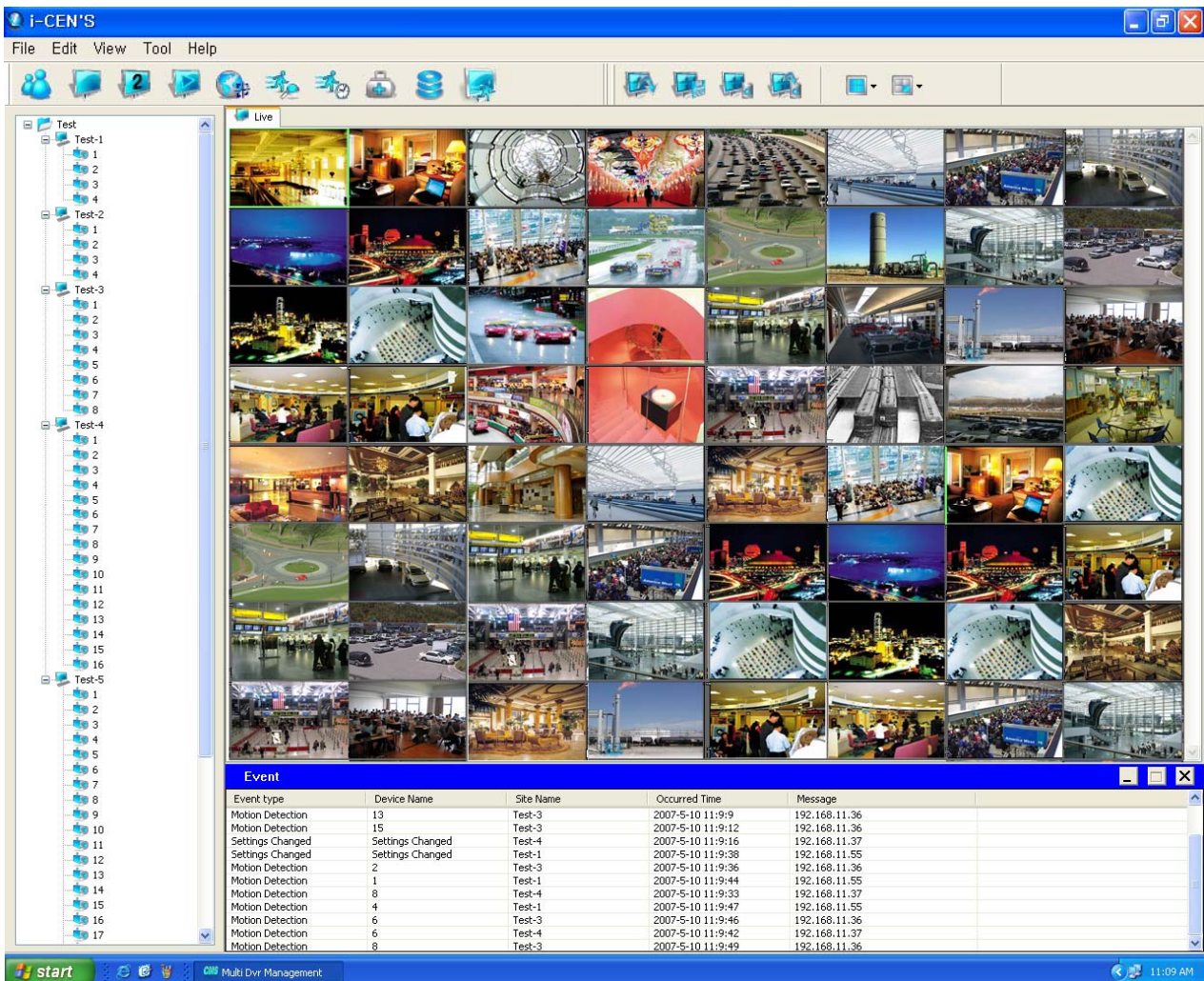
- 5 E-map..... 23
 - 5.1 E-map Configuration..... 23
 - 5.2 Camera Configuration..... 24
 - 5.3 Event Pop Up live view. 25
- 6 Event Log 26
 - 6.1 Event Setting (PC DVR-MagicRadar)..... 26
 - 6.2 Event Setting (HR Series)..... 27
 - 6.3 Event Setting (PHR Series) 28
 - 6.4 Event Log Search 29
 - 6.5 Real time Event 30
 - 6.6 Event Popup Live View..... 30
 - 6.7 Event Page 31
- 7 Backup 32
 - 7.1 Network Backup..... 32
 - 7.1.1 DFS Backup 33
 - 7.1.2 EXE Backup 37
 - 7.1.3 Backup data CD Recording..... 39
 - 7.2 Schedule Backup..... 40
 - 7.2.1 Schedule Backup Configuration 40
 - 7.2.2 Backup Status..... 42
- 8 DVR Management..... 43
 - 8.1 Health Check 43
 - 8.1.1 Health Check Window 43
 - 8.1.2 Previous log search..... 44
 - 8.2 Upgrade Software 45
 - 8.3 Change Password 45

Overview of i-CEN'S software

1 Introduction of i-CEN'S

i-CEN'S (internet Central Surveillance) is an application program to manage and control DVRs over the TCP/IP network environment.

i-CEN'S software works with multiple DVRs and has functions to view live, playback, search event and check health of each DVRs.



2 Key Features

● Followings are key features of i-CEN'S

- Works with MagicRadar / XR Series / SR Series / HR Series / PHR Series
- Controls server connected over TCP/IP
- Multiple DVR Management
- Multiple Cameras support up to 128 cameras. (Supporting Dual monitor)
- Multiple Channel Division Display (1/4/7/9/13/16/25/36/64)
- Channel by channel Color Adjustment
- On Screen Pan/Tilt/Zoom control
- Schedule Backup
- Event Management
- Multiple E-Map
- E-mail notification
- Network Upgrade
- Powerful search by calendar and time bar
- Multiple channel search and simultaneous playback (Up to 32 channel)
- Easy and fast search of archived video and playback
- Saving image as BMP/JPG/AVI format
- Multi channel backup and playback
- Password protected system access
- Tab based Control (Live/Search/E-map/Event Log/Real time event/Health Check/Backup Status/Log)
- Dual audio communication

3 Key Benefits

Easy to Install

i-CEN'S Installation wizard provides easy method to install i-CEN'S solution.

Easy to control and manage

i-CEN'S provides easy to use controlling management GUI.

Easy to relocate camera

You can easily relocate camera by 'drag and drop function'.

Centralized real time viewing and playback

i-CEN'S enables you to set up to monitor and playback at any places in your local or remote facility. Up to 64 channels can be accessed to the one screen display simultaneously.

4 System Specification

i-CEN'S is designed to work on the Microsoft Windows. Following is the minimum hardware requirement and system specification.

H/W Spec	i-CEN'S
WIN O/S	Windows 2000, XP Home, XP Pro, Vista
CPU	P4 Dual Core 3.0GHz
Memory	2048MB or Above
Graphic card	128MB or above Video card, Supportive Dual Monitor
CD Rom	O
Monitor	19" or above

Supporting DVR

- All MagicRadar DVR series with version 5.0.0.0 or above
- Genesis DVR series (SR, XR)
- H.264 DVR series (HR, PHR)

Display Performance

- Display : Max up to 120fps (NTSC)

Camera Display

- Drag & drop camera display
- Camera relocation of displaying window
- Multiple DVR group mode & camera display

Video Search and play back

- Video search by calendar and time bar
- Simultaneous multiple channel playback (Max up to 32channel)

PTZ Control

- On-image PTZ and Dialog control panel function

Back up

- Network Backup (DFS, EXE)
- FTP schedule backup
- AVI saving by event.

System log

- Real-time event log viewer and event search.

Security level

- Password protected system access.
- System configuration by Admin level and system monitoring by user level

Network Upgrade

- Upgrade via Network

5 Application

- Centralized local facility monitoring and playback such as Building, Airport, Plant, Dam and Shipyard.
- Centralized remote facility monitoring over the Internet such as Unmanned facility of Telco, Chain store, Gas Station, Branch Office & construction site.
- System Integration for small to large sized facility.

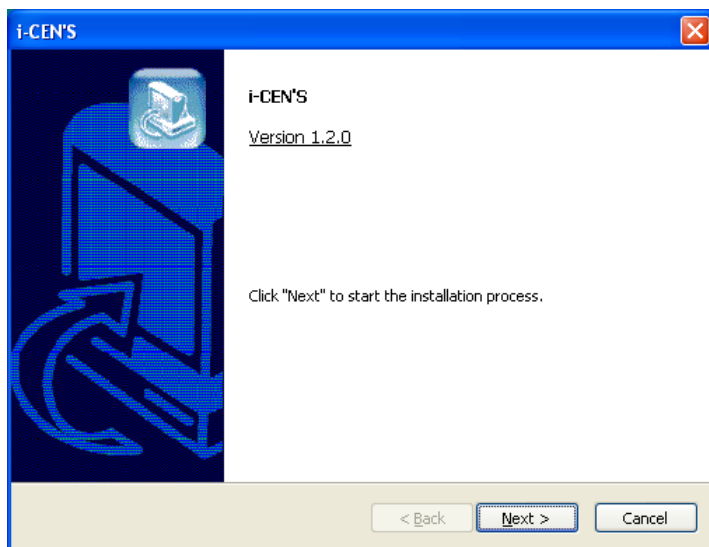
Software Installation

1 Installation of i-CEN'S

Insert the i-CEN'S software CD and browse My Computer.

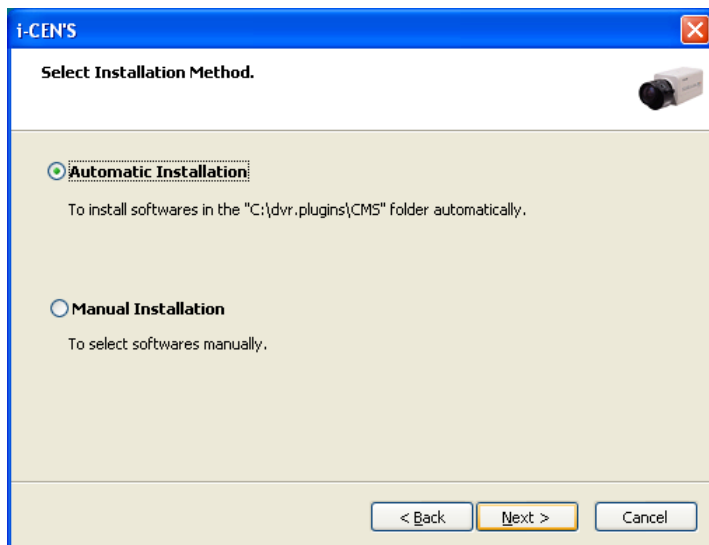
Select the CD-ROM drive and select i-CEN'S installation wizard.

Installation wizard will start installing the program. Click [Next] button.

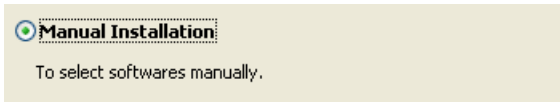


Select Installation Method and click [Next] button to continue.

To change program installation folder, select manual installation instead.

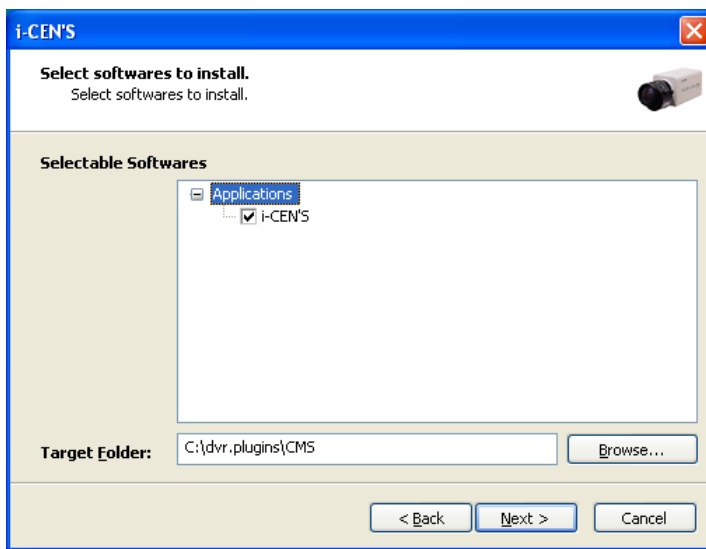


If [Automatic Installation] is selected, installation process will be completed on the next step.
Select [Manual Installation] to select target folder manually.

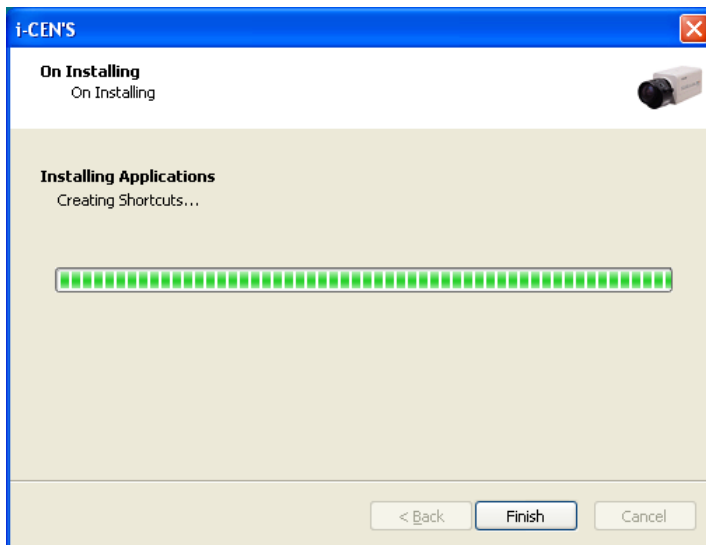


To change Existing target folder, just click [Browse] button to specify target folder.

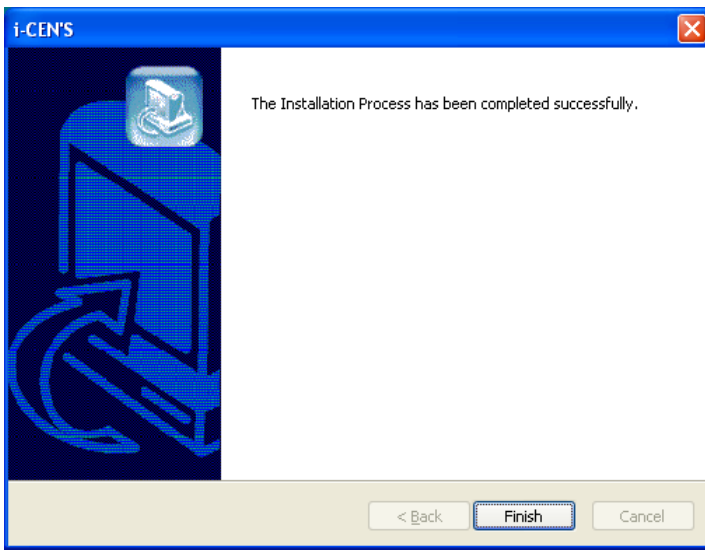
Note: Recommendation is not to change and just go ahead with [Next] button click.



Please wait for a while to install i-CEN'S program.



Click [Finish] button to complete installing i-CEN'S program.



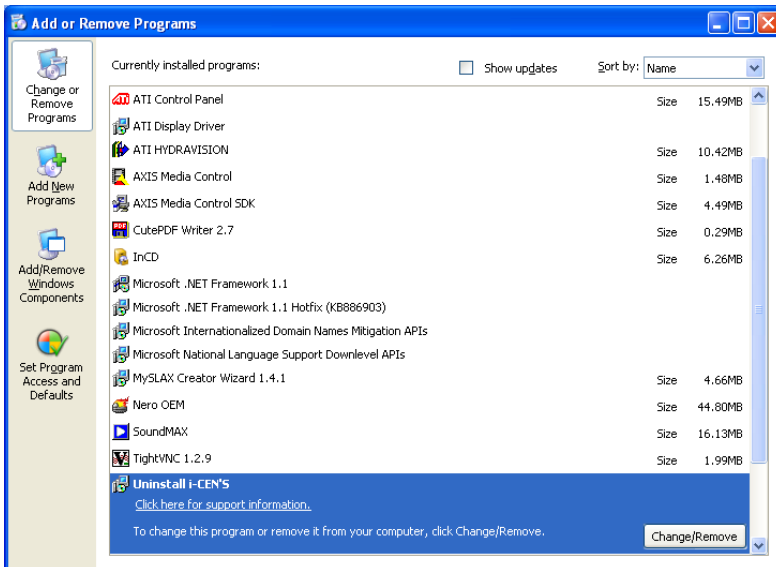
2 Uninstallation of i-CEN'S

Run Uninstall program as below.

Window > Start> All Programs > i-CEN'S > Uninstall i-CEN'S



You can also uninstall i-CEN'S program by running 'Add/Remove Programs' in Control Panel as below.



Operation Guide

1 Program Start and Description of Tool bar

1.1 Running the program

Run the program by selecting [i-CEN'S] program as below.

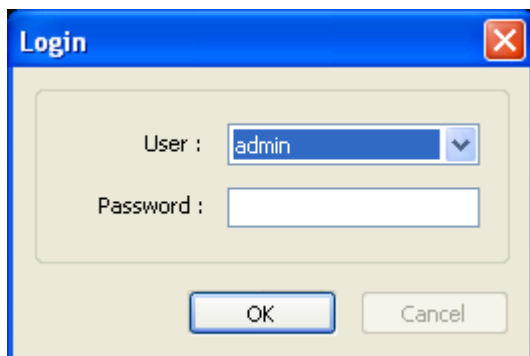
Window start>All Program > i-CEN'S > i-CEN'S



You can also run [i-CEN'S] program by clicking i-CEN'S icon on desktop.



1.2 Log in



If you run program firstly, above log in window will be appeared.

Default user is admin without a password.

You can add user account in user setup menu. (Refer to chapter 2.2)

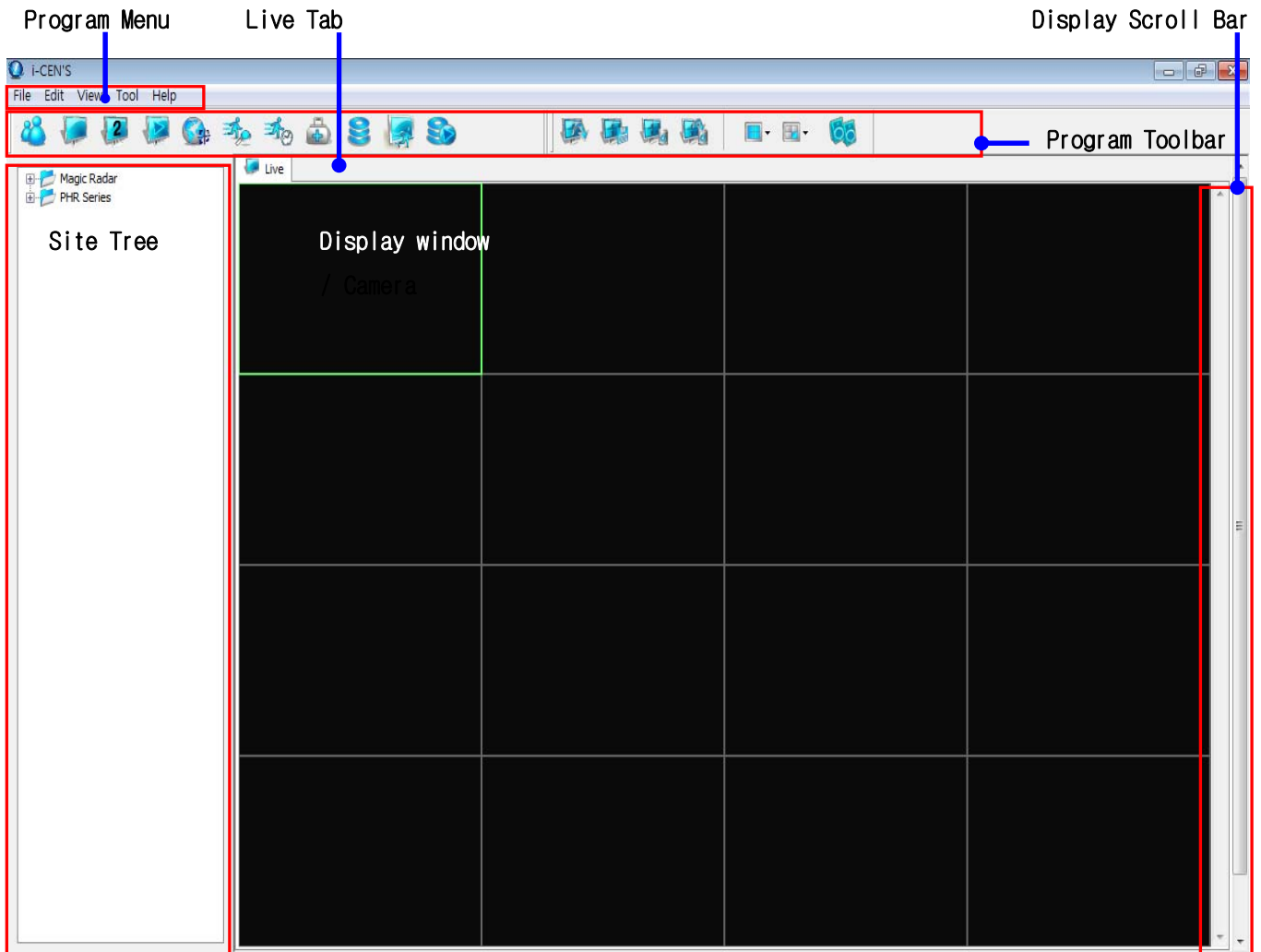
Select user and input password, then click [OK] button to log in.

1.3 Brief Description of i-CEN'S window

This chapter explains i-CEN'S window, program menu and tool bar briefly.

For more detailed information about each window and function, please refer to the other chapters in the manual.

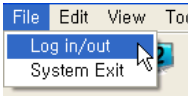
After log in, following window program will be appeared and configure the system by following the configuration guide as descriptions in the manual.



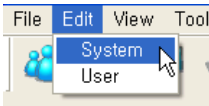
Try to configure and control the program with user friendly menu and icon provided in the program.

1.3.1 Program Menu

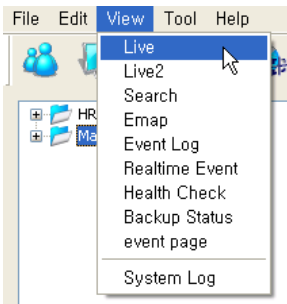
File: To Log in / Log out and System Exit.



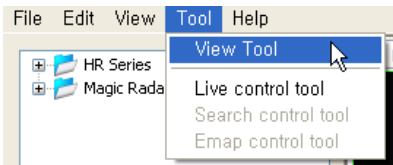
Edit: To configure system and set user account.



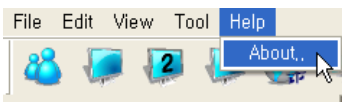
View: To view and check Live, Live2, search, Emap, Event Log, Realtime Event, Health Check, Backup Status, event page and System Log.



Tool: Click these menu items to open each tool when the tools (View / Live / Search / Emap) are closed,.








Help: Shows information about DVR.



1.3.2 Tool Bar of Program



This tool bar is providing shortcut to run program related functions. Following is detailed explanation about respective ICON.

-  **Login / logout:** Login / logout i-CEN'S software.
-  **Live:** Shows real-time live view
-  **Live 2:** Opens extended live 2 window.
-  **Search:** Search and playback recorded image
-  **E-map:** Opens the E-map window and configure E-map



Event Log: Opens the Event log window.



Real-time Event: Opens the real time Event window.



Health Check: Opens health check window.



Backup Status: Shows backup status.



Event Page: Shows event page window.



Backup Player: Opens the DFS backup player window.

1.3.3 Tool Bar of Live View



This tool bar is to configure screen configuration. Following is detailed explanation about respective ICON.



Load Screen: Loads configuration of saved screen.



Save Screen: Saves configuration of current screen.



Delete Screen: Deletes configuration of saved screen.



Clear Screen: Clears configuration of loaded screen.



Screen Division: Select screen division (1 / 4 / 7 / 9 / 13 / 16 / 25 / 36 / 64 / Auto switching)



Camera Selection: Select camera to control.



2-Way Audio: Execute dual audio communication while pressing this icon.

1.3.4 Tool Bar of Search and Playback



This tool bar is to control search and playback. Following is detailed explanation about respective ICON.



Play Backwardx2: Play backward by x2 speed.



Play Backward: Play backward by normal speed.



Stop: Stop playing.



Play: Play forward by normal speed.



Playx2: Play forward by x2 speed.



Time bar Up/Down: Changes camera display on time bar.



Time bar Right/Left: Moves time display on time bar.



Time bar Zoom in/Zoom Out: Controls zoom level on time bar.



Save Image: Saves image on selected channel as BMP/JPG format.



Search: Text search / People count search by data from server.



Screen Division: Select screen division (1 / 4 / 7 / 9 / 13 / 16 / 25 / 36 / 64 / Auto switching)

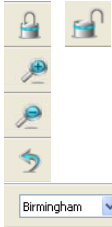


Camera Selection: Select camera to control.

1.3.5 Tool Bar of E-map Control



This tool bar is to configure e-map. Following is detailed explanation about respective ICON.



Lock/Unlock: Under lock condition, location of camera icon is not available.

Zoom In: Zoom in e-map.

Zoom Out: Zoom out e-map.

Default Image Size: Revert to default image size.

E-map list: Selects e-map on the list.

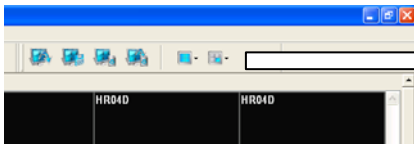


Add E-map: Adds e-map on the list from image file. (BMP, JPG format)


Delete E-map: Deletes e-map from the list.



Site / Camera / Input / Alarm: Adds site, camera, input and alarm by 'drag and drop' icon.



Notice!) View / Live Control / Search Control / Emap Control tool bar can be floated and pop up by drag and drop.

Click  button to close tool bar.

2 Program Setting

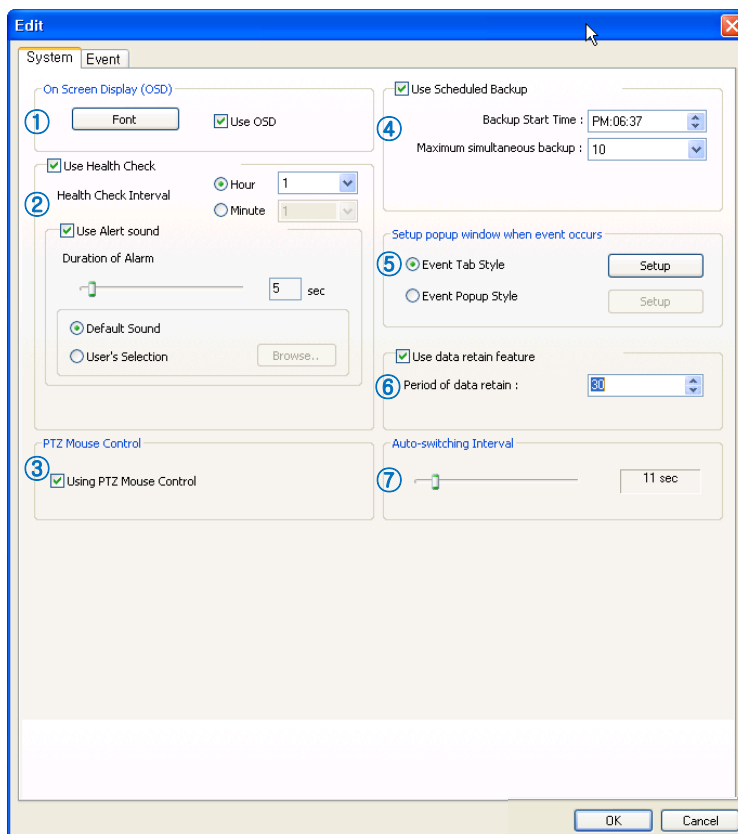
Program setting is to configure options which affect to overall function of i-CEN'S software. Thus, this configuration must be done before proceeding with other setting. Following options are provided by edit menu.

1. System configuration
2. User configuration

2.1 i-CEN'S System Configuration.

Select [System] on 'Edit' to check system properties.

● System Configuration



6. Use data retain feature

Specify period of data retain.
Saving AVI data will have limitation of recording date.

7. Auto Switching Interval

Specify the length of time to stay at one camera on auto switching mode.

1. On Screen Display (OSD)

Tick the "Use OSD" to use on screen display. Font can be changed on screen display by clicking "Font" button

2. Use Health Check

Sets health check interval and selects alert sound.

3. PTZ Mouse Control

Simply ticks "Using PTZ Mouse Control". On a PTZ installed channel screen, drag mouse to the desired position to see.

4. Use Scheduled Backup

Sets backup start time and select maximum simultaneous backup, which is the number of site to backup up to 10.

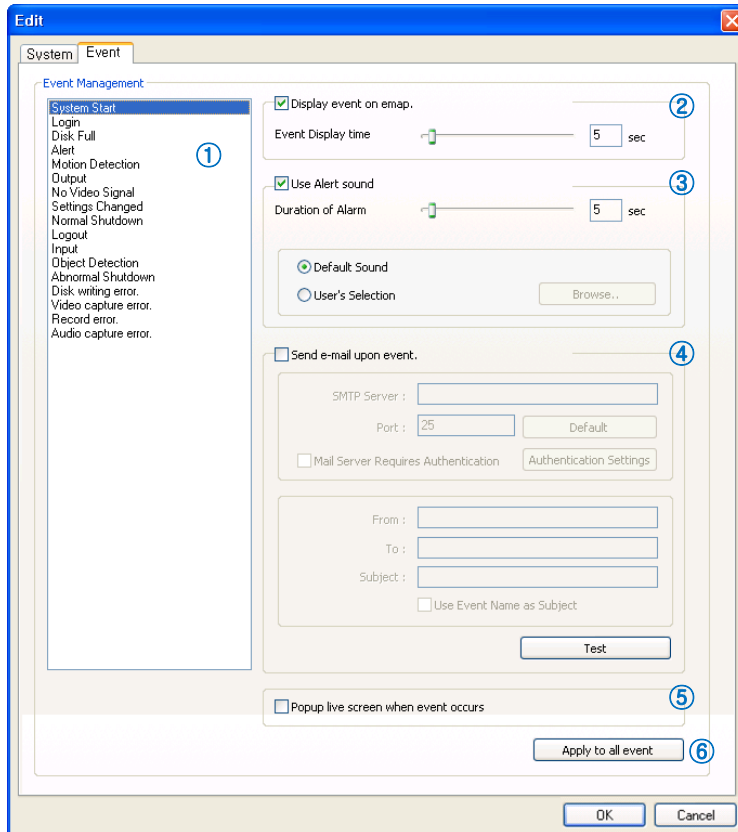
5. Setup popup window when event occurs

Select Event Tab style and setup path of AVI auto saving and video display duration.

Select Event Popup style and setup Max popup window and other options. (Maximize, Auto close of popup window and Activate time of popup window)

2.2 i-CEN'S Event Configuration.

Select Event tab on 'Edit' to check system properties.



1. Event Management

Select event to change settings.

2. Display event on emap.

Tick this menu to enable display event on the emap.

Adjusts 'Event Display Time' (2sec ~ 60 sec)

3. Use Alert Sound.

Tick this menu to use alert sound.

Adjusts 'Duration of Alarm' (2sec ~ 60 sec) and select alert sound.

4. Send e-mail upon event

This is to set e-mail server configuration to send event e-mail

SMTP Server: Type in email server address from mail service provider as 'mail.yahoo.com'

Port: Specify port of e-mail server

Authentication Settings: If mail server request authentication, set authentication setting.

From: Type in the address of sender as info@yahoo.com

To: Type in the address of receiver as info@google.com

Subject: Specify subject clearly, otherwise error message will be appeared.

Test: Click "Test" button to test e-mail connection by setting

5. Popup live screen when event occurs:

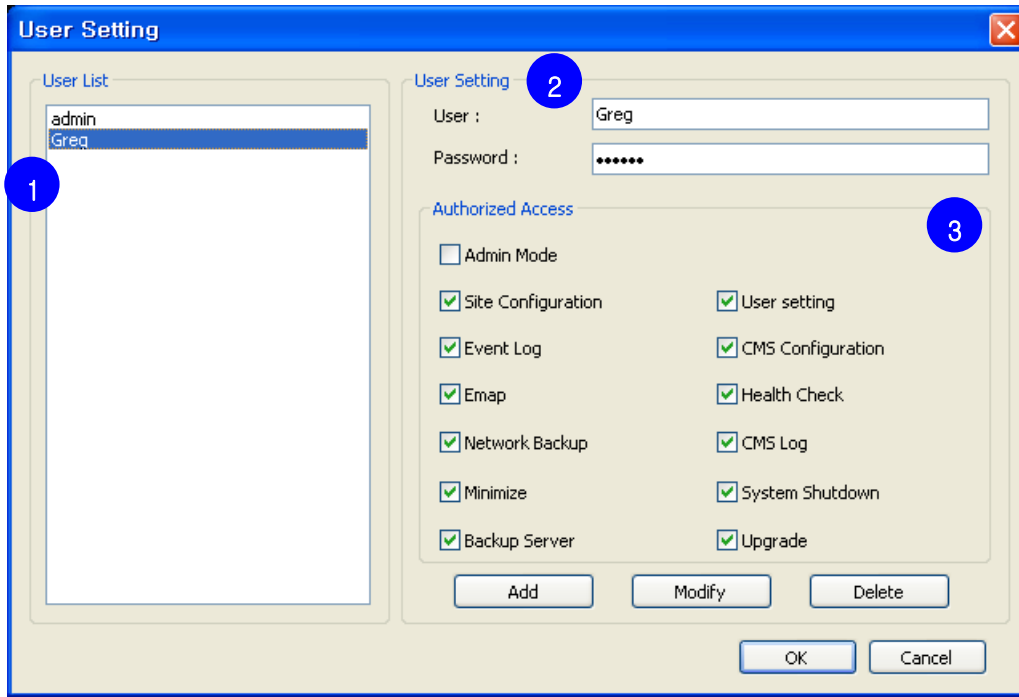
This is to set enable popup live screen when selected event happens

6. Apply to all event

Click this button to apply to all event by current configuration.

2.3 i-CEN'S User Configuration.

Select [User] on 'Edit' to check user setting.



User List: Shows registered user list. 1

How to add user setting:

1. Input user name and password in user setting category. 2
2. Select authorities in "Authorized Access" 3
3. Click "Add" button to register new user.

How to modify user setting:

1. Select user name in "User List". 1
2. Change authorities in "Authorized Access" 3
3. Click "Modify" button to register new user.

Notice: Modifying authorized access of admin is not available.

How to remove user account:

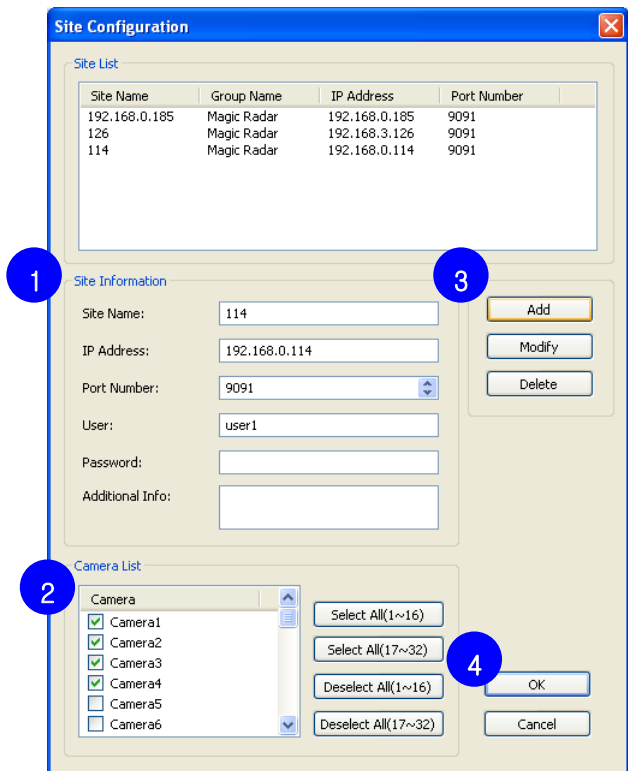
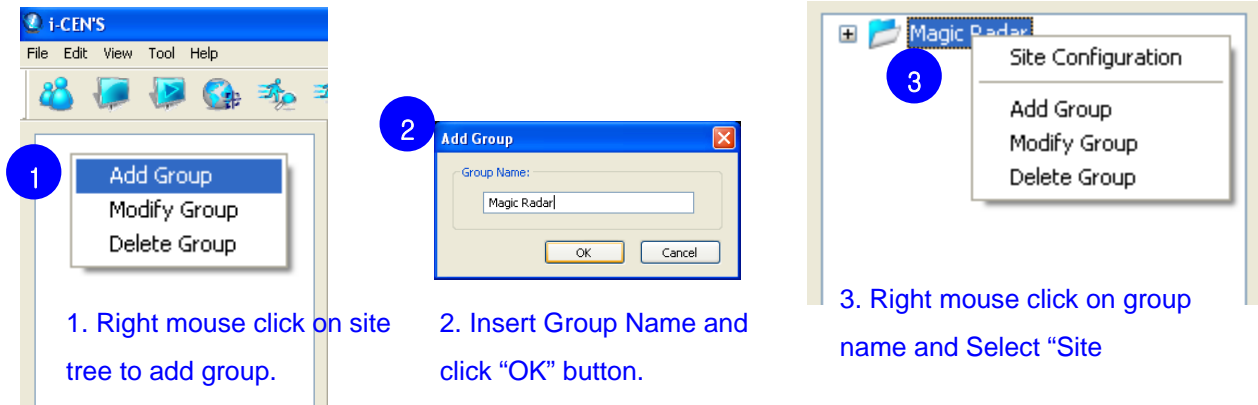
1. Select user name in "User List". 1
2. Click "Delete" button to delete registered user.

Notice: Deletion of admin account is not available.

3 Live Display

This chapter explains how to configure i-CEN'S software to access DVR and **working live display**.

3.1 Group and site configuration




How to set

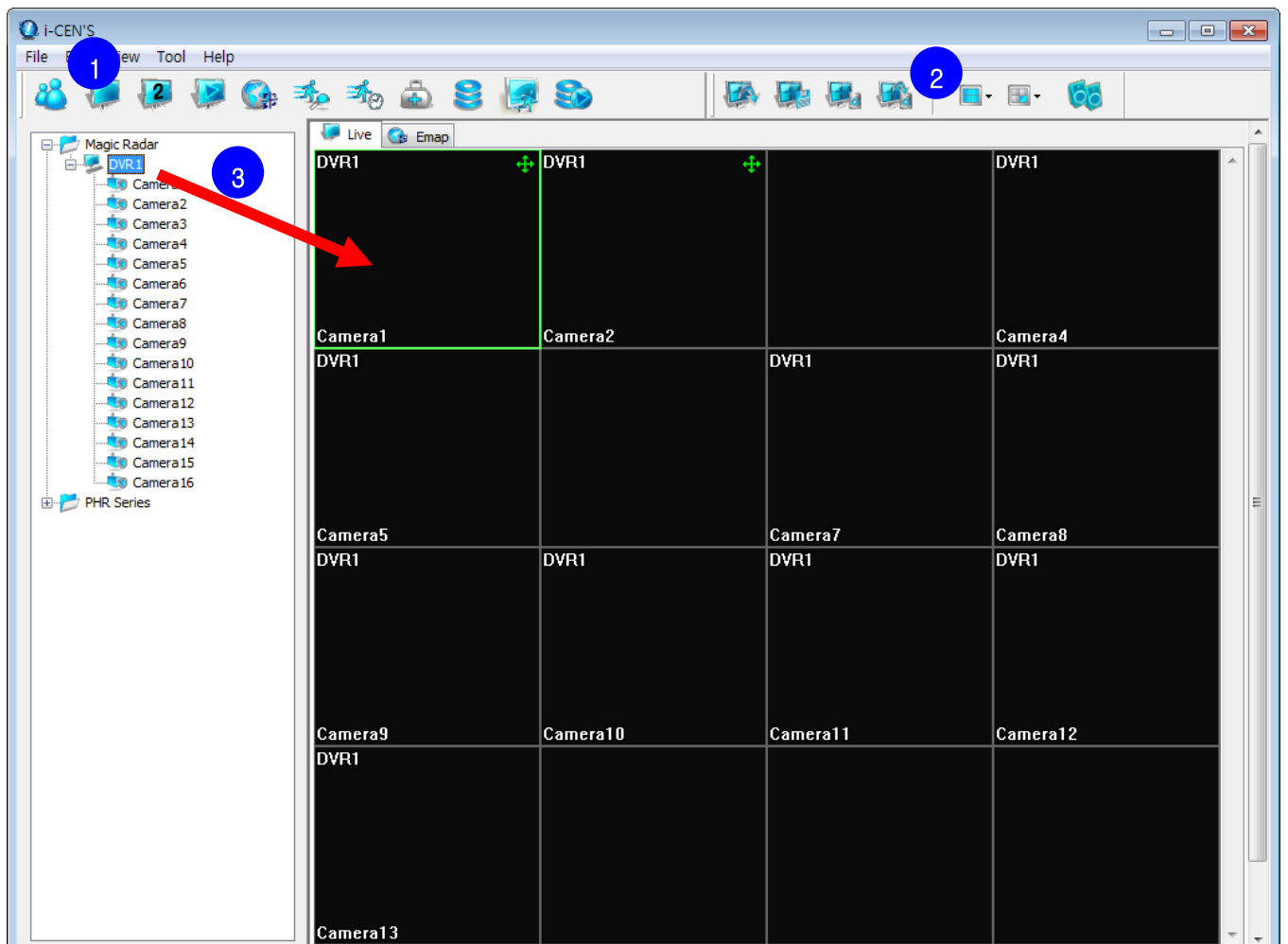
- Input Site Information of connecting DVR
 - Site Name:** Type in easy name to recognize the site
 - IP Address:** Type in IP address of connecting DVR
 - Port Number:** Type in port number of connecting DVR
 - User and Password:** Type in User ID and Password of connecting DVR
- Select cameras to connect in camera list. (You can select all/deselect all by clicking quick menu on the right side of the list)
- Click [Add] button to add site.
- Click [OK] button to finish site configuration.

Notice: To modify or delete site, select site on the site list and change site information and then click modify or delete button.

3.2 Live Display configuration

How to set live display screen

1. Click Live 1 button() to view live window. 1
2. Select screen division on tool bar. 2
3. Select site and drag & drop it on live screen as below. 3
 Cameras will be displayed sequentially.
4. Screen configuration can be saved by tool bar of channel (Refer to 1.3.5)
5. If there are more connected cameras to see, use scroll bar.




- Each camera can be added on live screen individually. (Drag and drop camera on live screen)
- When cameras are added, i-CEN'S will access to the site automatically.
 (If the site is accessed, color of icon will be red to blue.)

Notice: If camera is added to over previously added camera, newly added will be over displayed.

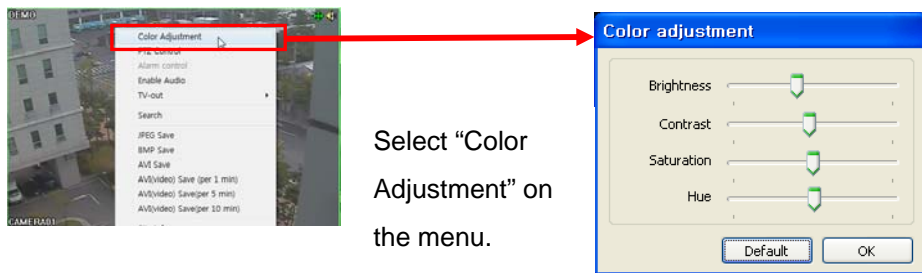
3.3 Live Display Control

How to open extended live display:

Click "Live 2" button () to open extended live tab.
 Live 2 tab can be moved to secondary monitor if using dual monitor.

How to adjust color setting:

Right mouse click on video image in live tab to open pop-up menu.

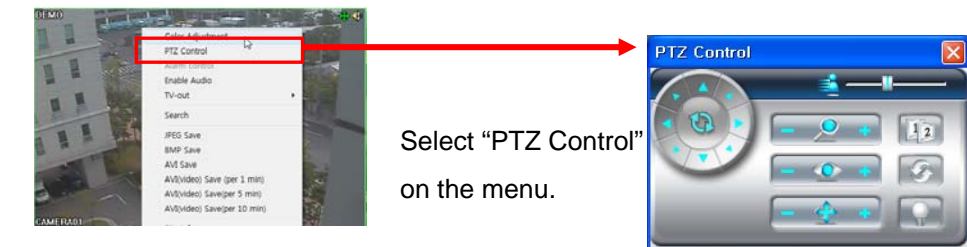


Select "Color Adjustment" on the menu.

Adjust color settings and click "OK" to apply changes. Click "Default" button to revert as default color settings

How to control PTZ:

Right mouse click on video image in live tab to open pop-up menu.

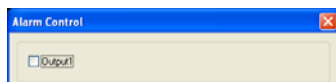


Select "PTZ Control" on the menu.

Control PTZ camera by clicking control buttons.

How to set Alarm Control:

Select "Alarm Control" on the right mouse click menu to set alarm output.



How to Enable Audio:

Select "Enable Audio" on the right mouse click to enable audio transmission.

How to TV-out:

Select "TV-out" on the right mouse click to selected channel would be spot out to CCTV monitor on DVR.

How to Save Video:

Right mouse click on video image in live tab to open pop-up menu.

JPEG Save: To save selected channel as JPEG format **BMP Save:** To save selected channel as BMP format

AVI Save(by 1 / 5 / 10 minute): To save selected channel as AVI format

Full Screen: Right mouse click on video image in live tab and select "Full Screen" to enlarge screen.

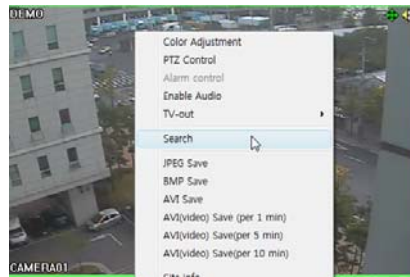
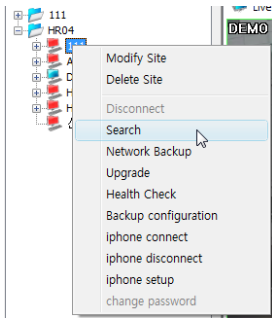
Restore Screen: Right mouse click on video image in live tab on full screen mode and select "Restore Screen"

4 Search and Playback

4.1 Search

There are three ways to open search window.

1. Select site on site list and Click  button to open search tab.



2. Right mouse click on site name and select "Search" on the menu.

3. Right mouse click on channel on live window and select "Search" on the menu.

Tool bar of Playback



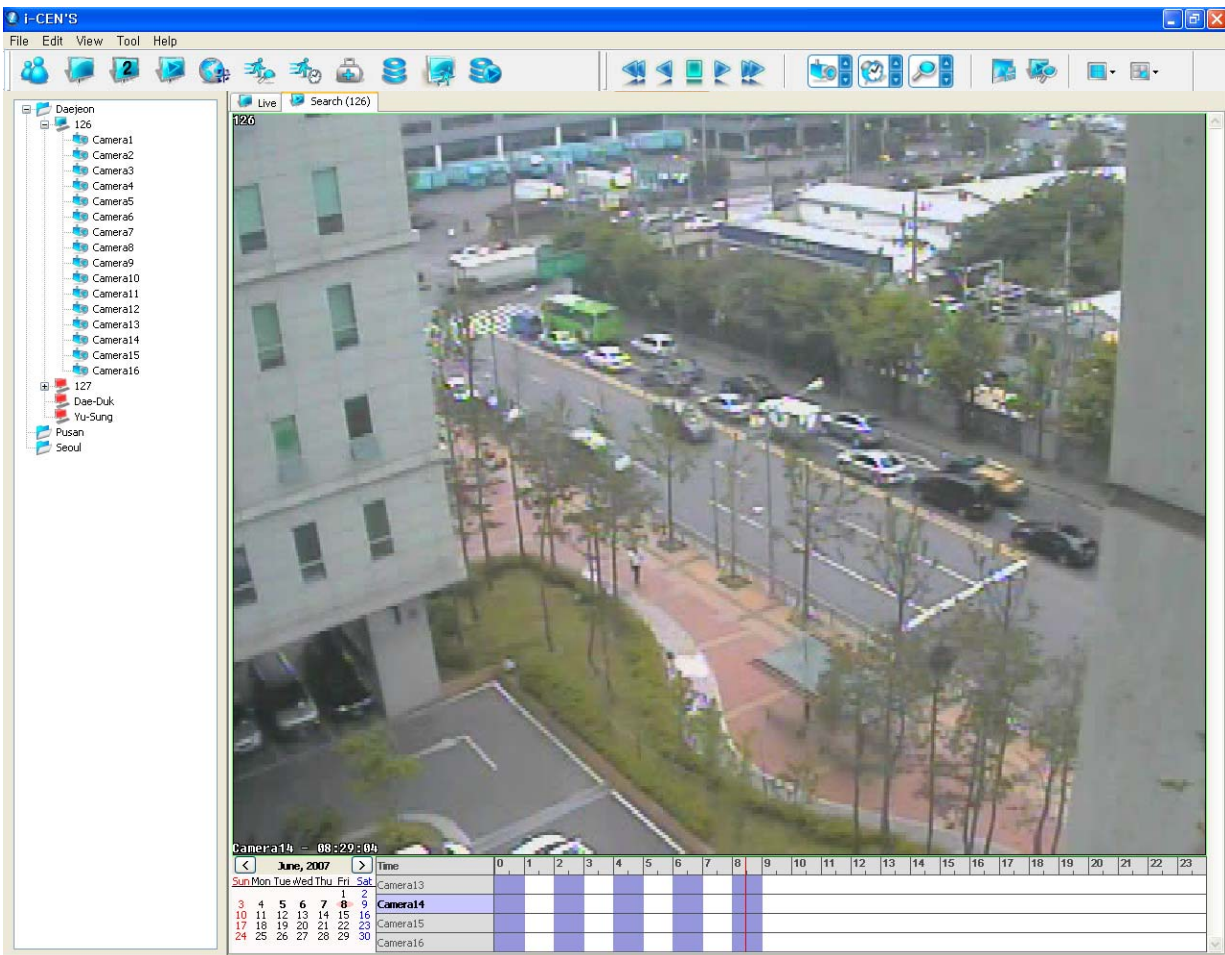
4.2 Playback

How to playback:

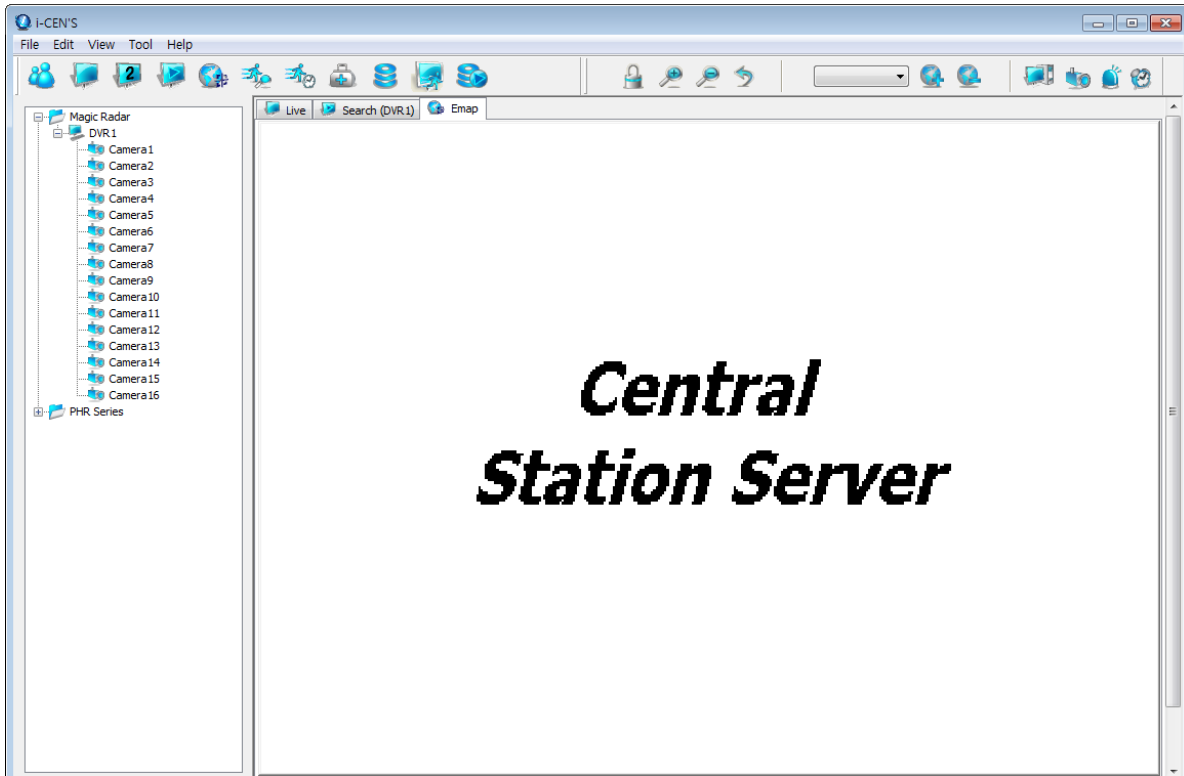
1. Open search tab by selecting search menu.
2. Select recording date on search calendar.
3. Select camera to playback.
4. Select time to playback in search bar.
5. Click "Play" button to playback.

Notice: To playback one channel, double click it to enlarge.


To back to multi channel playback, double click it again.




5 E-map



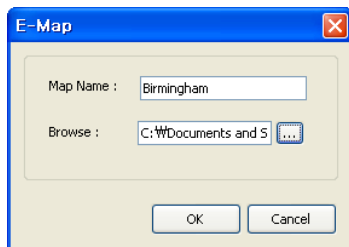
5.1 E-map Configuration

Click  icon to open E-map window.

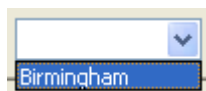
Click  icon to add E-map image

Input map name and browse E-map file and click "OK" button to add e-map.

(E-map Supports BMP, JPG file format)

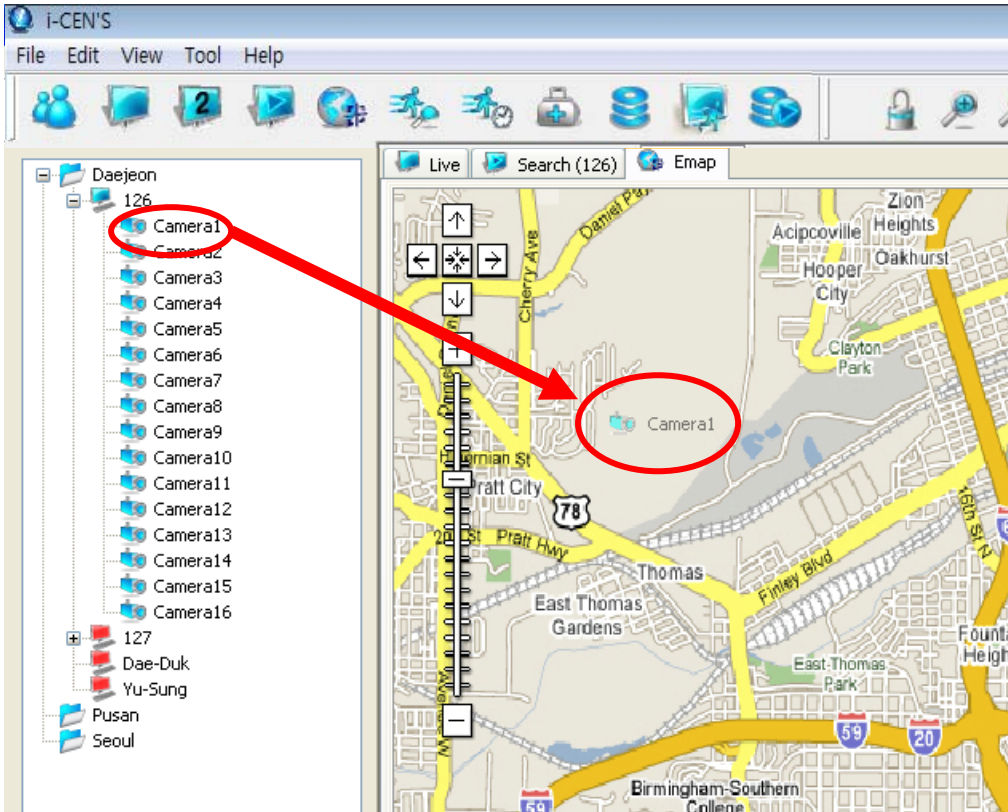


Select E-map in the e-map list.



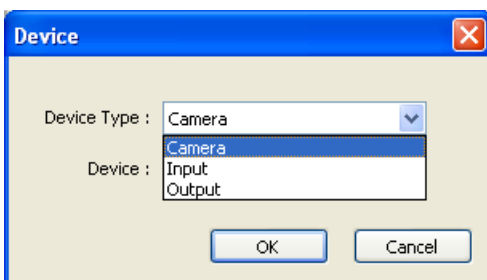
5.2 Camera Configuration

Drag and drop the camera to E-map window.




Select device type (Camera, Input and Output), device (number) and click “OK” button to add device.

Device: No special meaning, but easy to distinguish each device on the E-map to user

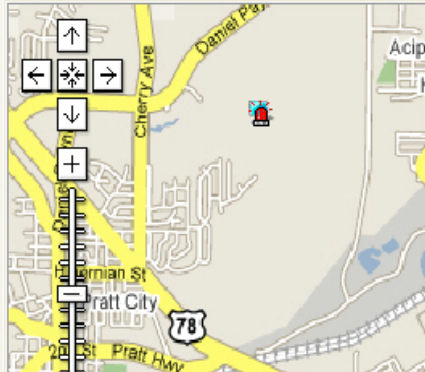


If event from DVR happens, device icon will be blinking.

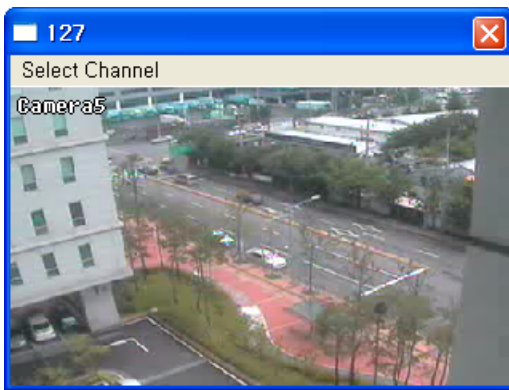
Click  icon to unlock E-map. Under unlock mode, device icon can be moved to another location.

5.3 Event Pop Up live view.

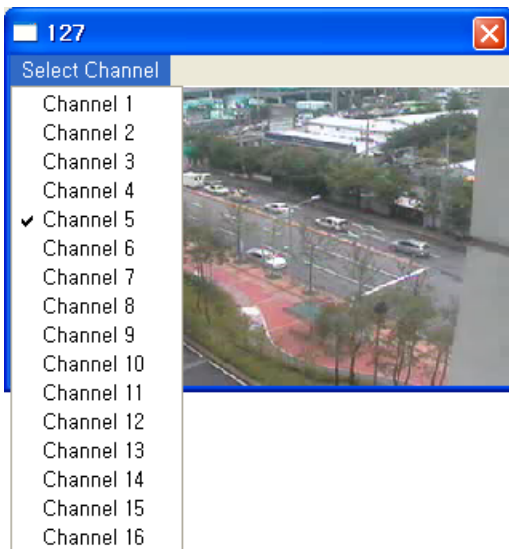
Drag and drop camera on E-map window.



Double click site on the real time event window to open event popup live view screen as below.



Default selected camera is "Camera1" and channel can be changed by "Select Channel" menu as below.

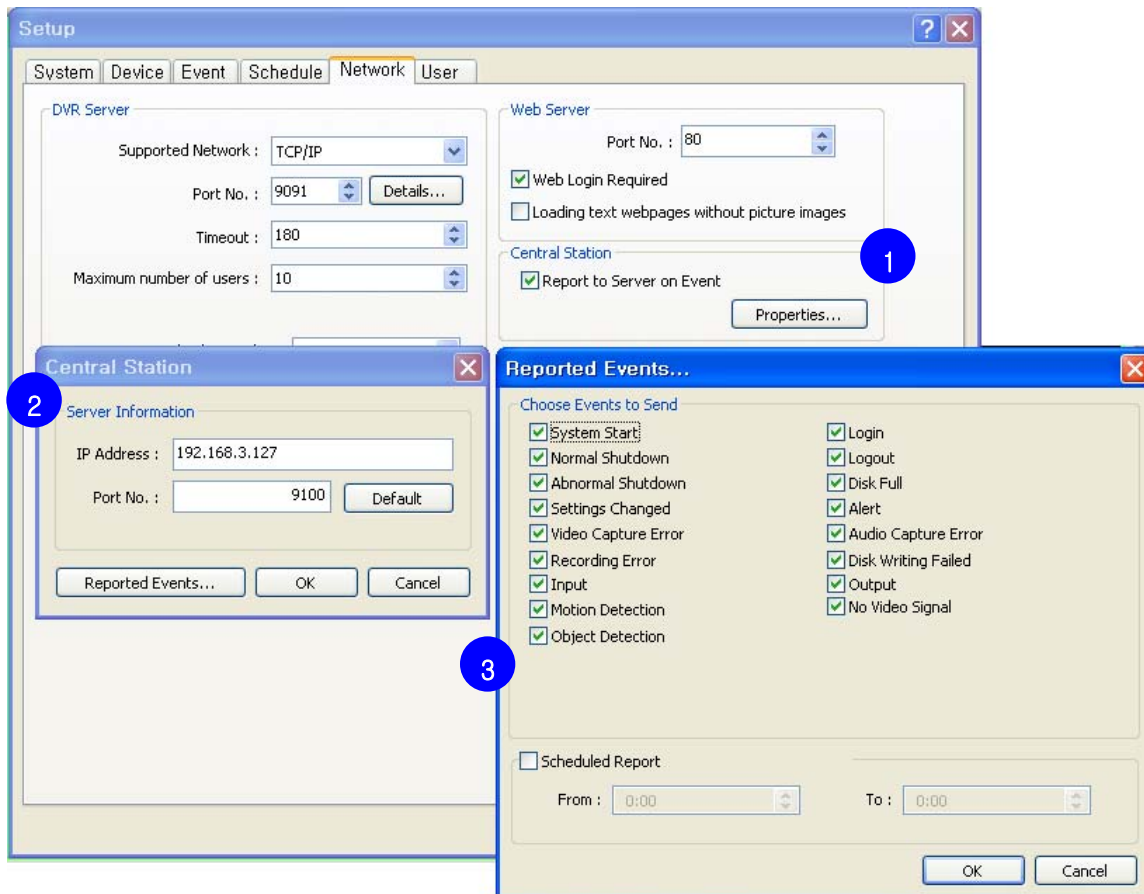


6 Event Log

6.1 Event Setting (PC DVR-MagicRadar)

How to set event:

To receive event from DVR, event filter would be configured in DVR setup.



1. In DVR system, go to '**Setup > Network > Central Station**' and tick "Report to server on Event" and then click [Properties] button.
2. Input IP address of i-CEN'S and port no(Recommended not to change) and then click [Reported Events] button.
3. Choose events to send and click [OK] buttons to save configuration.

6.2 Event Setting (HR Series)

How to set event:

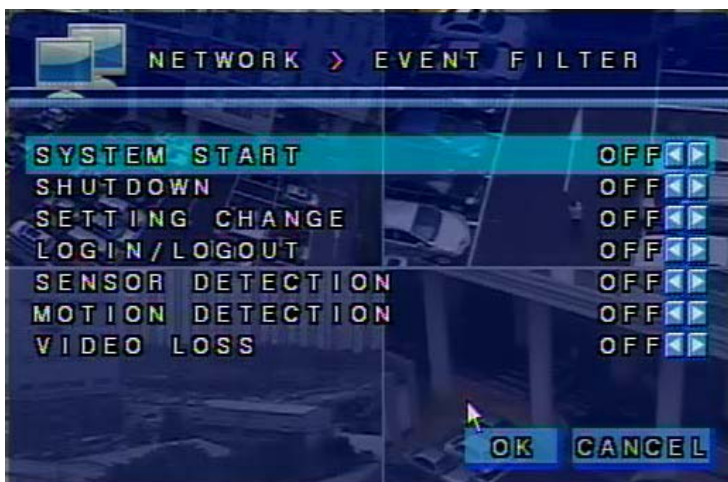
To receive event from HR series, event filter would be configured in HR menu.

● CMS Server Setting



1. In HR system, go to 'Menu > Network > CMS'.
2. Switch configurations as "ON" and specify server IP address. (CMS Server IP address)
3. Default Port number is 9100 (Recommended not to modify default value).
4. Click [OK] button and exit menu to continue to event filter setting.

● Event Filter Setting



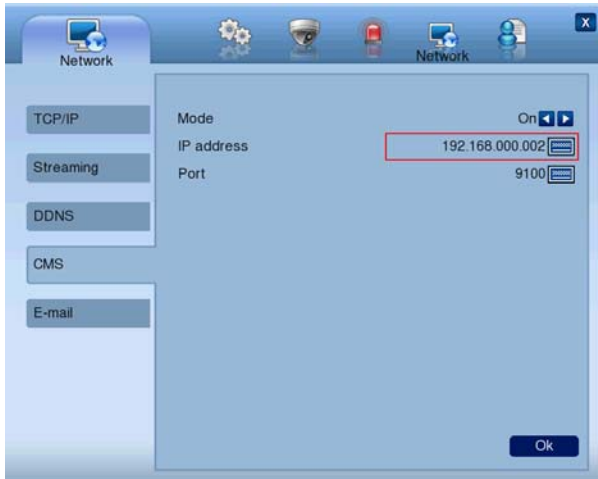
1. Go to 'Menu > Network > EVENT FILTER'
2. Choose events to send and click [OK] button and exit menu to save configurations.


6.3 Event Setting (PHR Series)

How to set event:

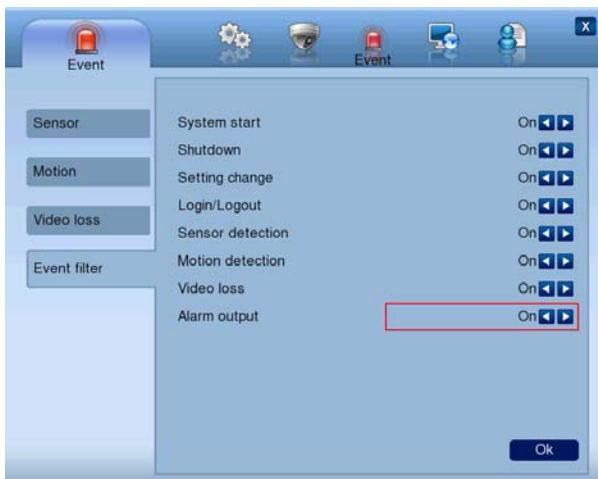
To receive event from PHR series, event filter would be configured in PHR menu.


● CMS Server Setting




1. In PHR system, go to '**Menu > Network > CMS**'.
2. Switch **Mode** as "ON" and specify server IP address. (CMS Server IP address)
3. Default Port number is 9100 (Recommended not to modify default value).
4. Click [OK] button to save setting and exit menu by click  button to continue to event filter setting.

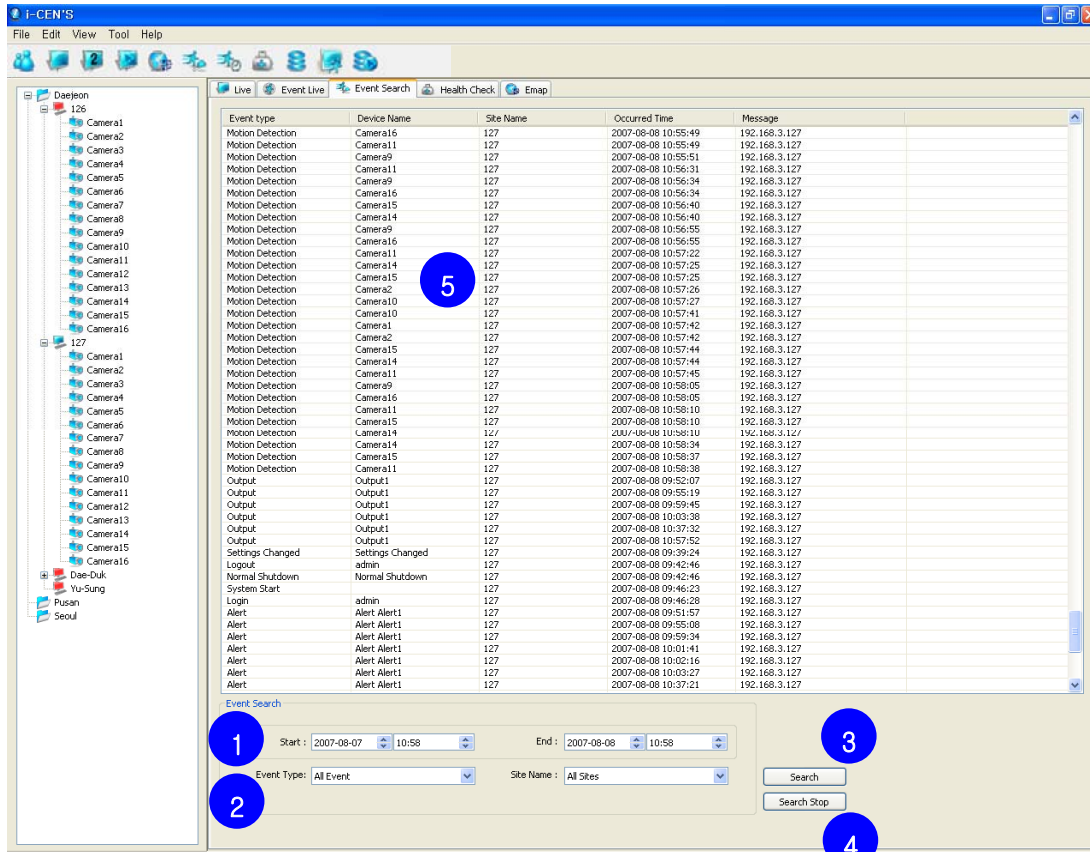
● Event Filter Setting



1. Go to '**Menu > Event > Event filter**'
2. Choose events to send and click [OK] button to save setting and exit menu by click  button to save configurations.

6.4 Event Log Search


Click  icon to open event log search window.



Search Steps:

1. Specify time range. (Start time and End time)
2. Select Event Type and Site Name.
3. Click “Search” button to start search.
4. To stop search, click “Search Stop” button.
5. Event search result will be shown in the grid area
(Event type, Device name, Site Name, Occurred Time and Message)

6.5 Real time Event

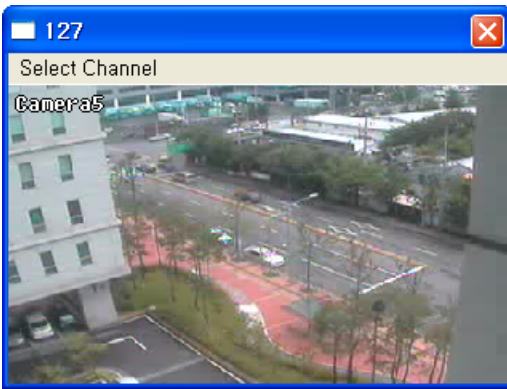
Click  icon to open real time event window.

Event type	Device Name	Site Name	Occurred Time	Message
Motion Detection	13	Test-3	2007-5-10 11:9:9	192.168.11.36
Motion Detection	15	Test-3	2007-5-10 11:9:12	192.168.11.36
Settings Changed	Settings Changed	Test-4	2007-5-10 11:9:16	192.168.11.37
Settings Changed	Settings Changed	Test-1	2007-5-10 11:9:38	192.168.11.55
Motion Detection	2	Test-3	2007-5-10 11:9:36	192.168.11.36
Motion Detection	1	Test-1	2007-5-10 11:9:44	192.168.11.55
Motion Detection	8	Test-4	2007-5-10 11:9:33	192.168.11.37
Motion Detection	4	Test-1	2007-5-10 11:9:47	192.168.11.55
Motion Detection	6	Test-3	2007-5-10 11:9:46	192.168.11.36
Motion Detection	6	Test-4	2007-5-10 11:9:42	192.168.11.37
Motion Detection	8	Test-3	2007-5-10 11:9:49	192.168.11.36

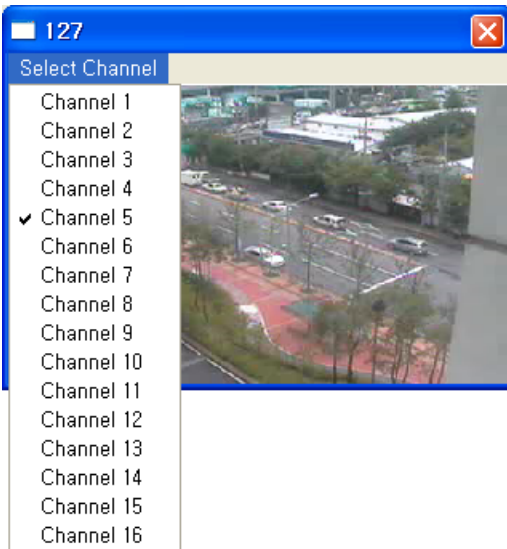
Real time event window is able to open in live, e-map, event search and health-check except for search window.

6.6 Event Popup Live View

Double click site on the Real time event window to open event popup live view screen as below.

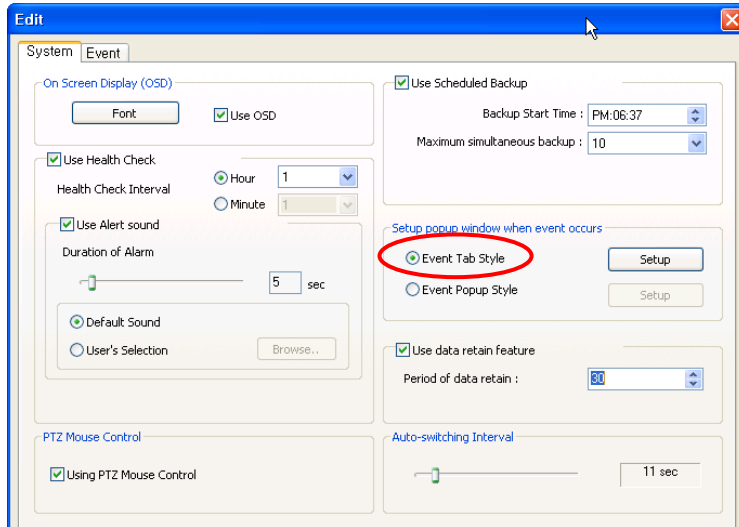


Default selected camera is "Camera1" and channel can be changed by "Select Channel" menu as below.

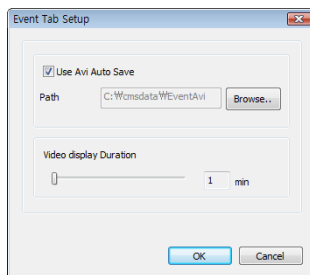


6.7 Event Page

Before open the event page, select "Event Tab Style" on the system menu in edit menu.



Click "Setup" button to set event tab setup




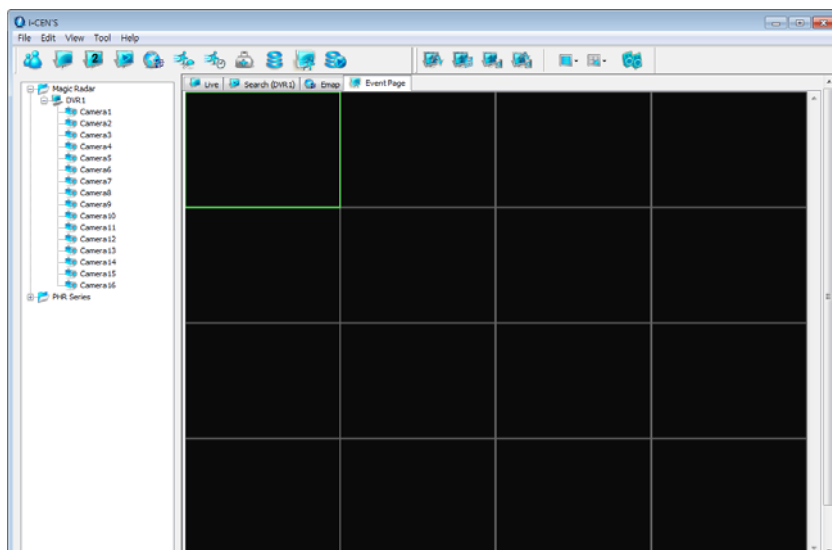
Tick Use AVI Auto Save to save avi files when event happen.

Browse the path of AVI recording.

Adjusts Video display duration (1 minute ~ 10 minute)

Click "OK" button to save setting and continue.

Click  icon to open Event page window as below.



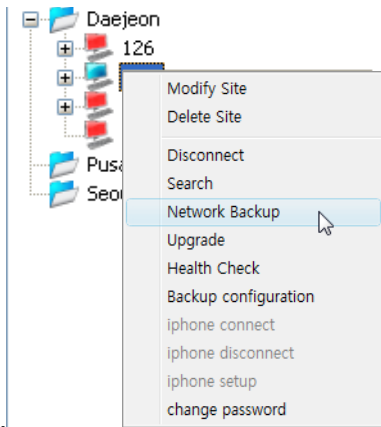
When event occurs, image will be shown one by one.

7 Backup

7.1 Network Backup

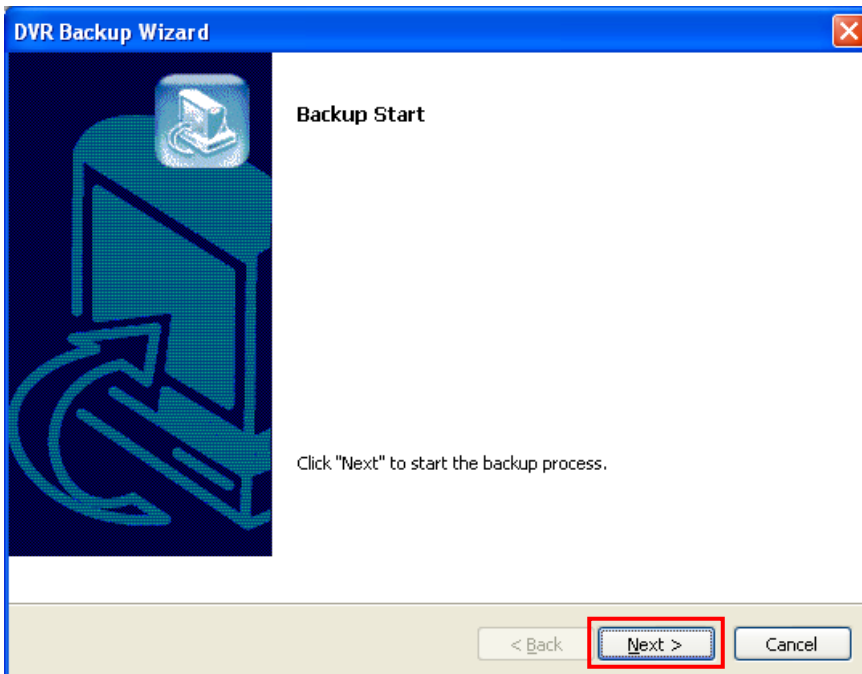
Network Backup is to backup recorded data through network.

The recorded data can be copied from the DVR's hard disk to client's external storage devices, such as DVD-RW



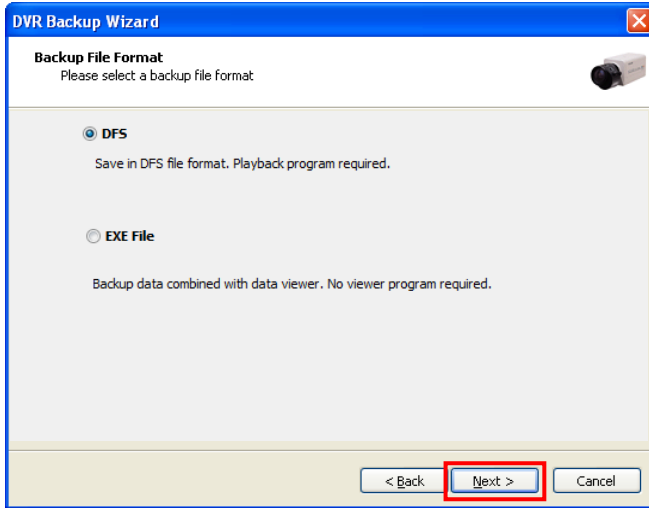
Right mouse click on the site name of the list and select "Network Backup" on the menu to open DVR backup wizard

Click "Next" button to start up backup process.



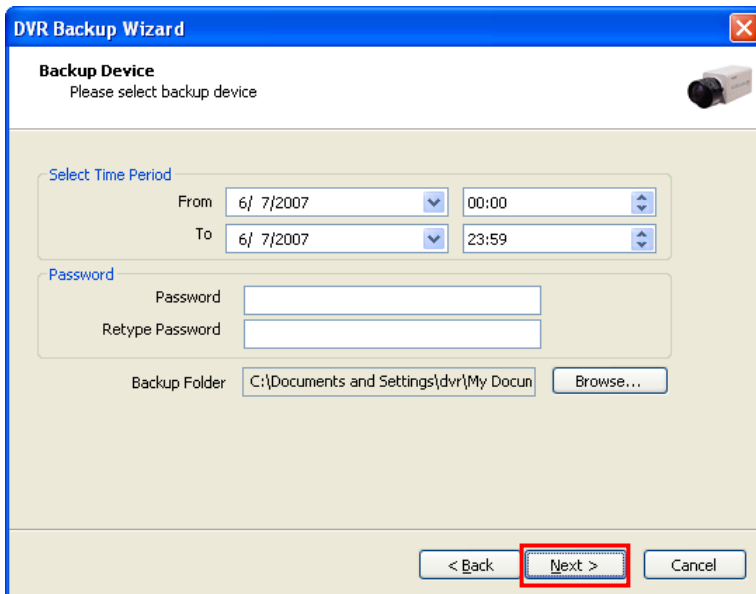
7.1.1 DFS Backup

1. Select "DFS" and click "Next" to continue.



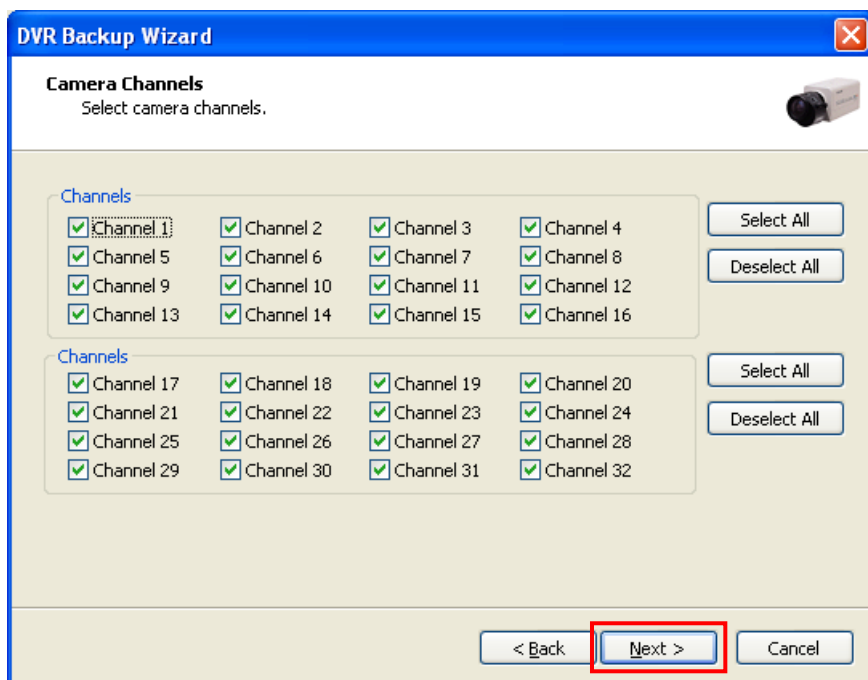
- **DFS:** Playback program is required to playback saved data.
 - **EXE File:** Playback program is included in saved data so no additional
- Notice!:** HR Series doesn't support DFS type backup. DFS File menu will be disabled.

2. Specify Time period and backup folder and then click "Next" button to continue.

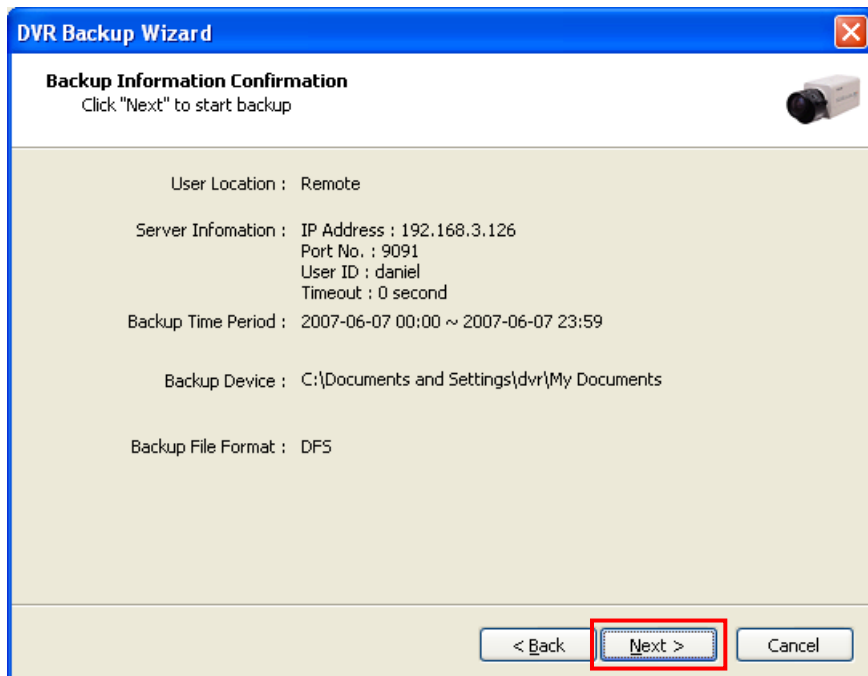


- **Select Time Period:** Specify time period for backup. When password is set, password is required to insert to view backup data during playback.
- **Backup Folder:** Click browse button to select a target driver and folder to backup.

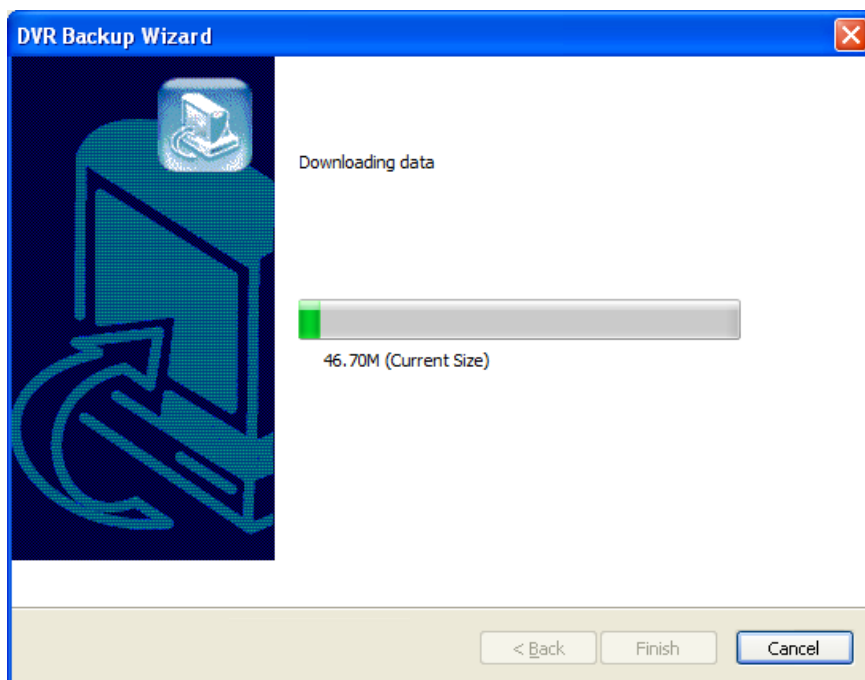
3. Select camera channels to backup and click "Next" to continue.



4. See backup information and click "Next" button to confirm.

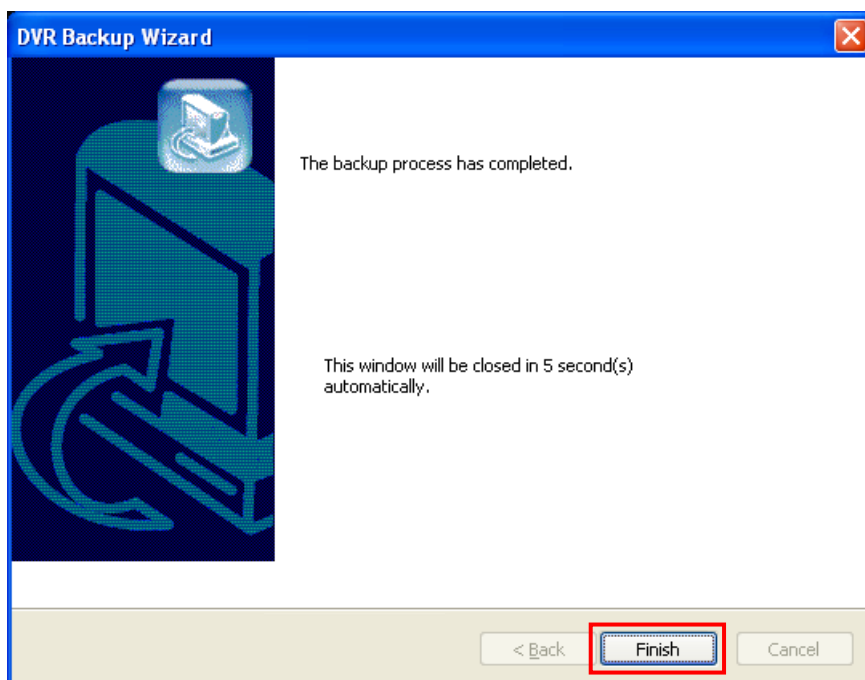


5. Please wait for a while until backup process is completed.



Log file: click "log file" to see backup status.

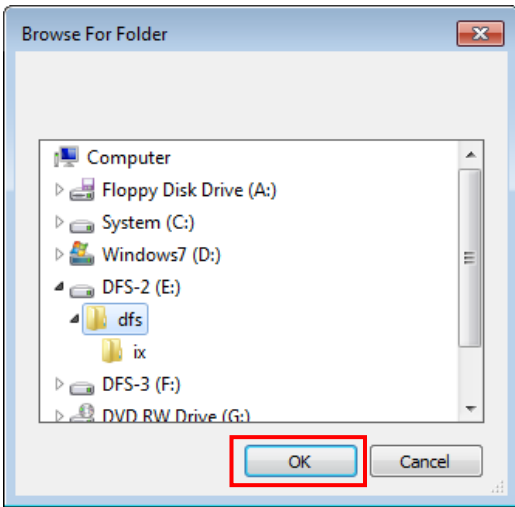
6. The backup process has completed.



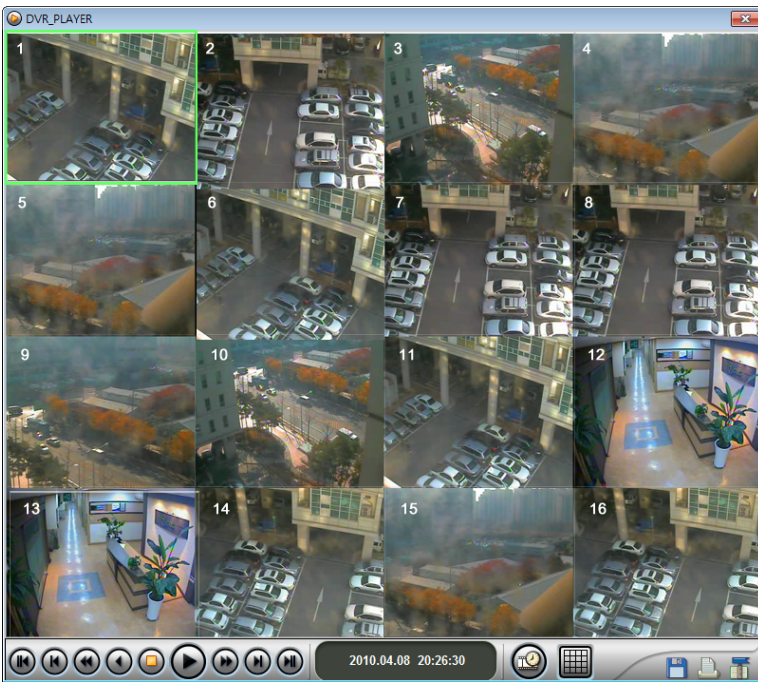
Please wait for seconds until wizard window is closed automatically.


Or click "Finish" button to close wizard right away.

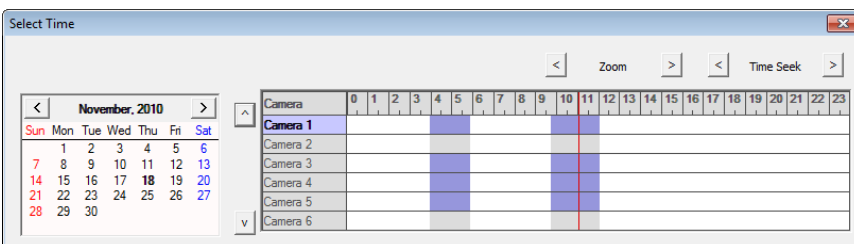
7. Click  icon to run Backup Player to play DFS backup data.



Browse backup folder and click OK button to continue.

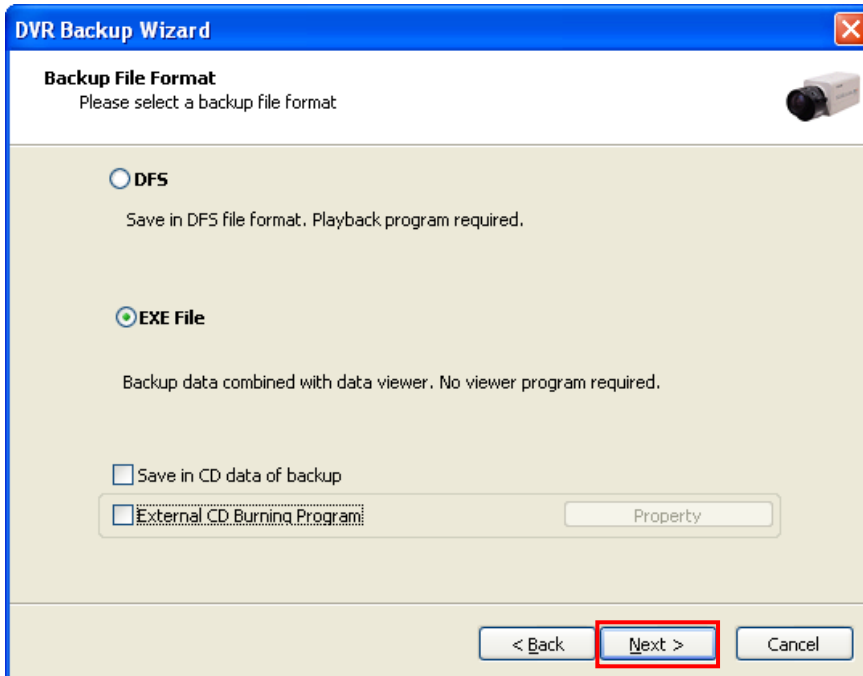


Click  icon to open calendar to select date and time of recorded data and then click "X" button to start playback.



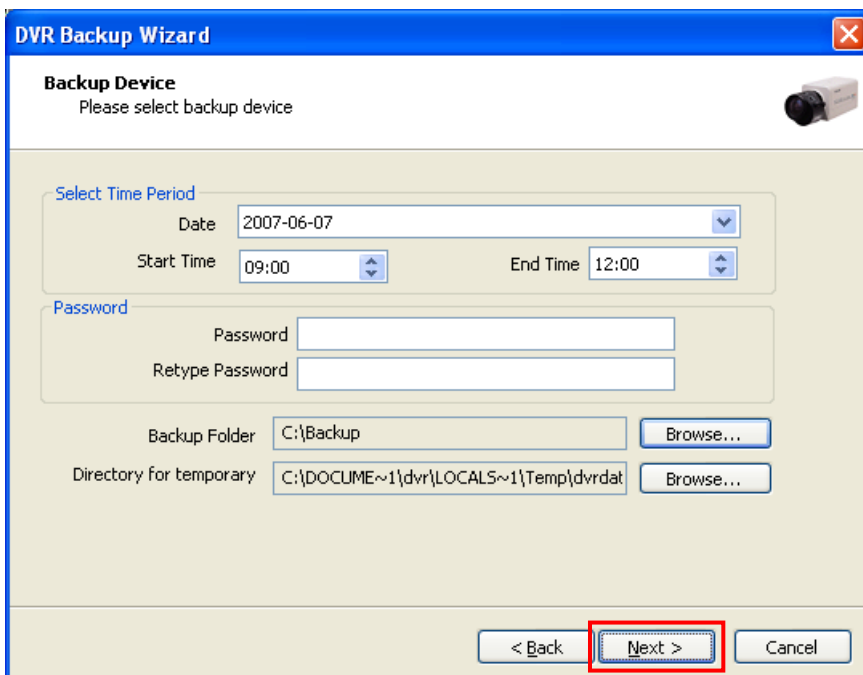
7.1.2 EXE Backup

1. Select "EXE File" and click "Next" button to continue.

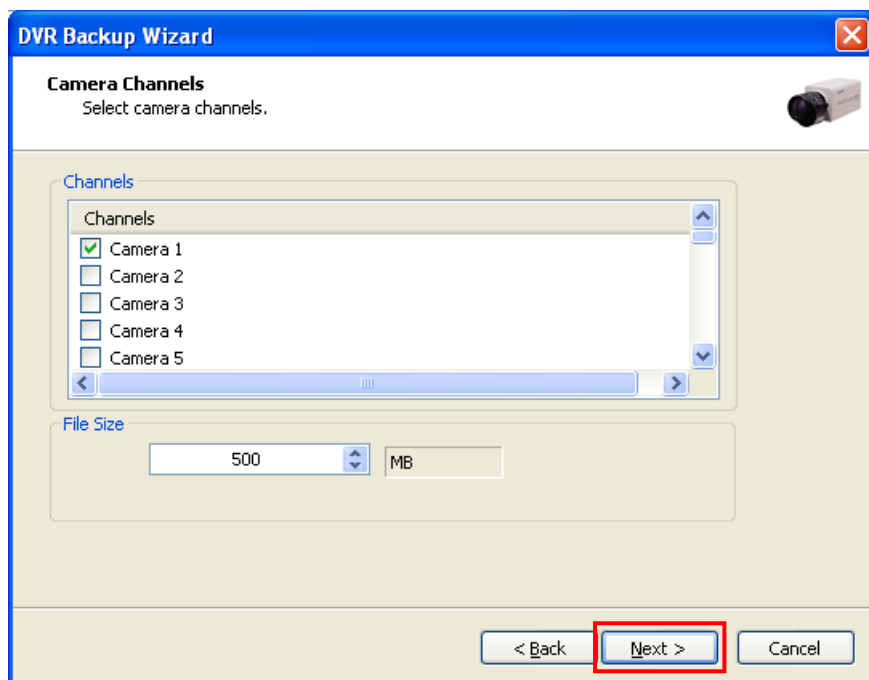


- Recorded data can be saved as EXE file. EXE file does not require viewer program to see saved data.

2. Specify time period, password and backup folder and then click "Next" button to continue.



3. Select a desired channel to back up and specify file size and then click "Next" button to continue.



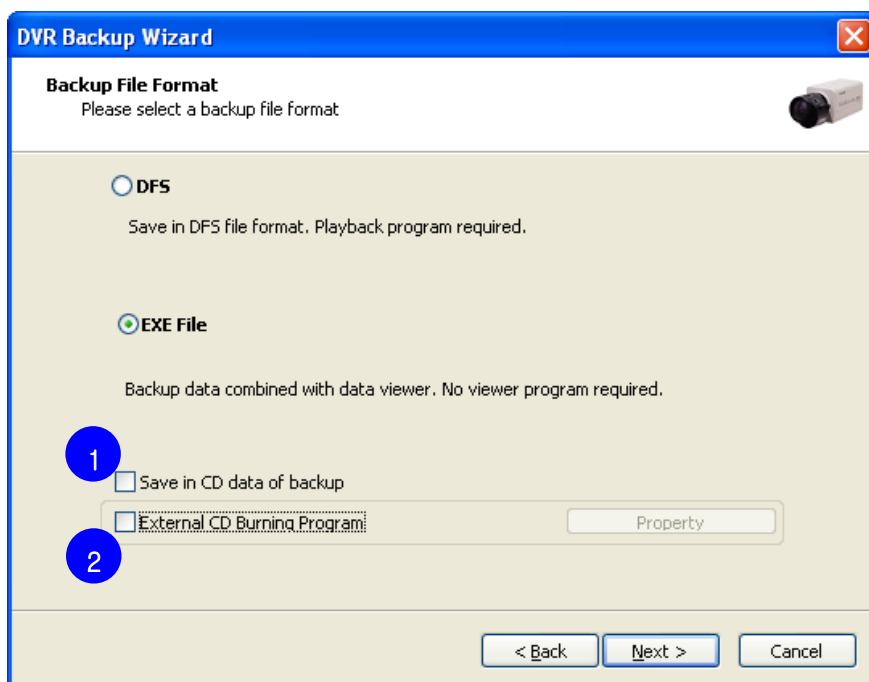
If backup file size exceeds specified file size, multiple exe files will be created.

Notice: 1 channel backup only.

4. Double click the exe file created to check saved data.



7.1.3 Backup data CD Recording



- 1. Save in CD data of backup:** Tick this to backup data to blank formatted RW CD. Data file will be saved to RW CD as HDD.
- 2. External CD Burning Program:** After backup data file, CD burning program will be launched automatically.

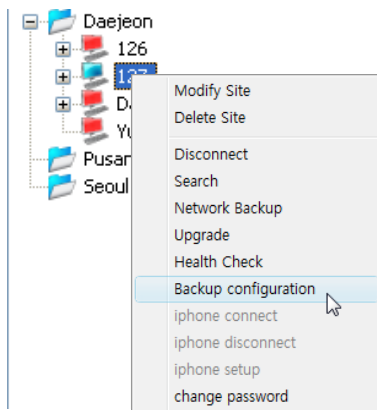
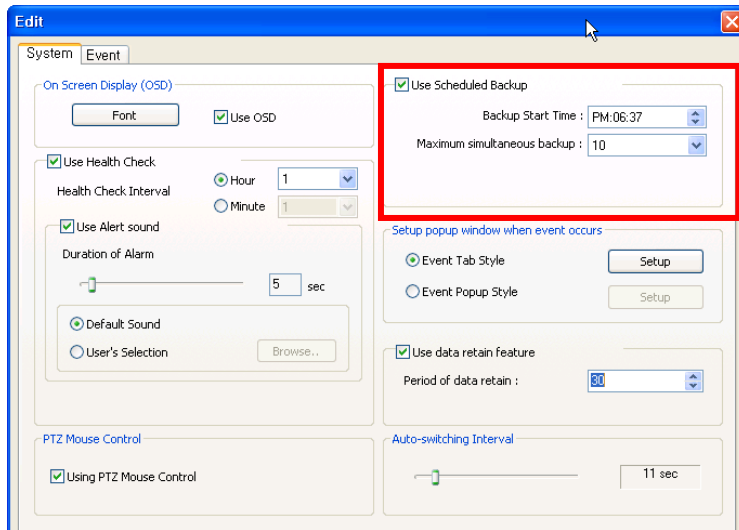
7.2 Schedule Backup

Schedule Backup is to backup recorded data to FTP server.

The recorded data can be copied from the DVR's hard disk to FTP server automatically or manually.

7.2.1 Schedule Backup Configuration

Before setup backup server, enable "Use Scheduled Backup" on Edit system menu. (Refer to chapter 2.1)



Right mouse click on the site name of the list and select "Backup Server" on the menu to open backup server configuration window.

● Backup server configuration window

Automatic Backup: Tick “Automatic Backup” to specify automatic backup.

- Specify basic date and backup period.

Manual Backup: Tick “Manual Backup” to specify automatic backup.


- Specify backup day and date range.

How to Set:

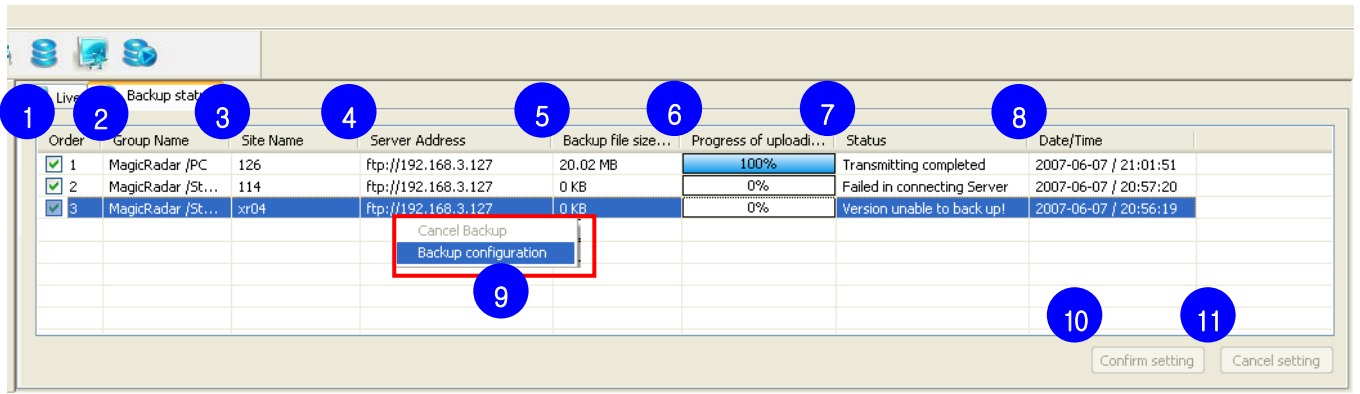
1. Select Backup method. (Automatic / Manual)
2. Configure IP setting.
 - Input backup server address (FTP server address)
 - Specify Time's up value.
3. Input FTP Server's User / Password.
4. Select desired channels to backup.
5. Click “OK” button to save configuration.

If all configurations are correct, backup will start at specified start time.

7.2.2 Backup Status

Click  icon to open backup status window.

If sites are registered to i-CEN'S, DVR sites are shown as below.



Order	Group Name	Site Name	Server Address	Backup file size...	Progress of uploadi...	Status	Date/Time
1	MagicRadar /PC	126	ftp://192.168.3.127	20.02 MB	100%	Transmitting completed	2007-06-07 / 21:01:51
2	MagicRadar /St...	114	ftp://192.168.3.127	0 KB	0%	Failed in connecting Server	2007-06-07 / 20:57:20
3	MagicRadar /St...	xr04	ftp://192.168.3.127	0 KB	0%	Version unable to back up!	2007-06-07 / 20:56:19

● Backup Status

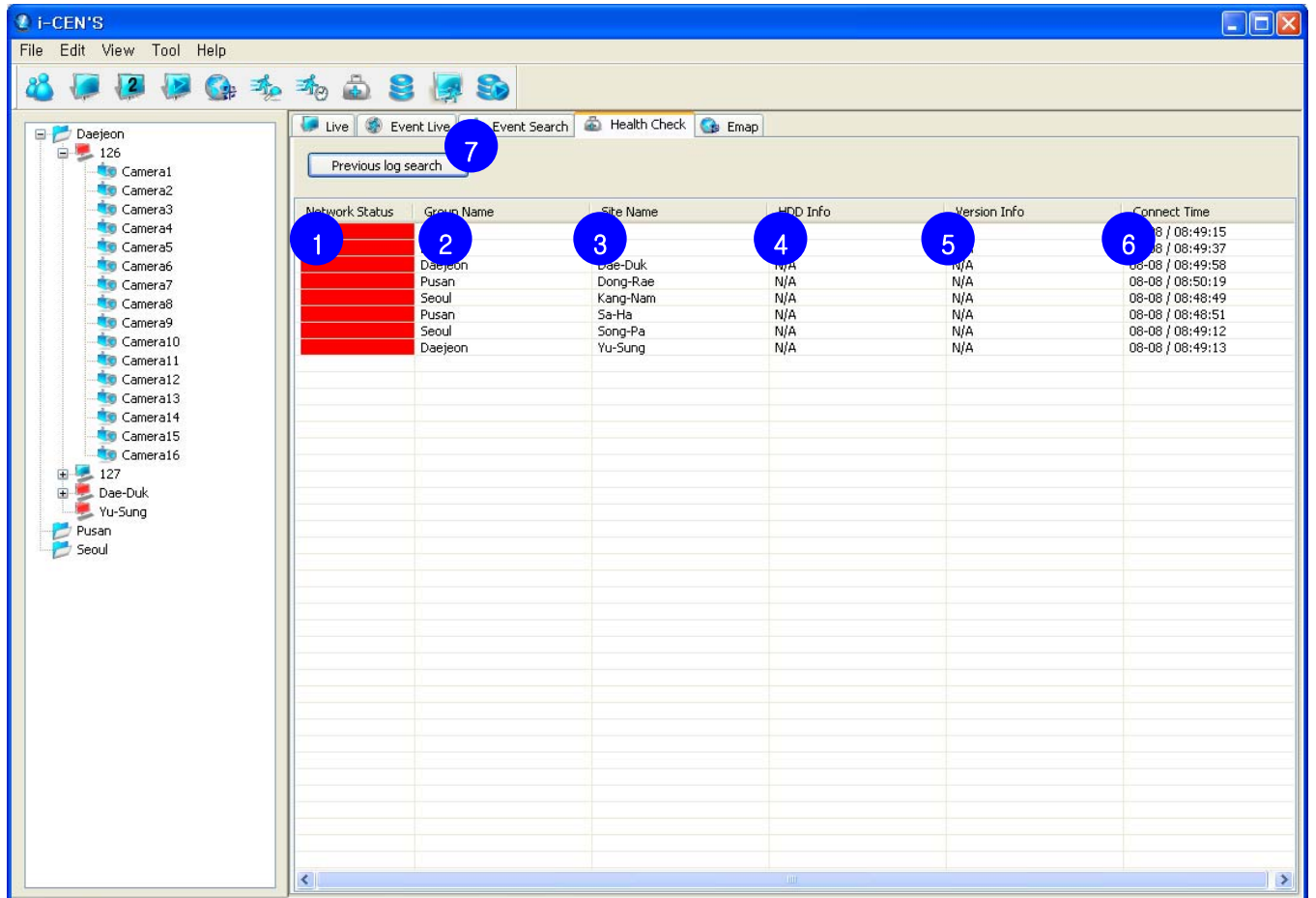
1. **Order:** Shows backup sequence order. If order number is deselected, backup process is stopped.
2. **Group Name:** Shows group name of the site.
3. **Site Name:** Shows registered site name.
4. **Server Address:** Shows FTP server address.
5. **Backup file size:** Shows size of backup file.
6. **Progress of uploading:** Shows current uploading progress with percentage bar.
7. **Status:** Shows status of backup.
 - **Backup setting error!:** Backup configuration value has something wrong.
 - **Transmitting Completed:** Backup is completed successfully.
 - **Failed in connecting Server:** DVR server is not connected.
 - **Version unable to backup!:** DVR server version does not support backup function.
8. **Date/Time:** Shows backup date and time.
9. **Right mouse click menu:** Right mouse click on list of backup status and select option.
 - **Cancel Backup:** Cancel selected backup progress.
 - **Backup Configuration:** Open backup server configuration window of selected site.
10. **Confirm setting:** Click button to confirm order setting.
11. **Cancel setting:** Click button to cancel order setting.

8 DVR Management

8.1 Health Check

8.1.1 Health Check Window

Click  icon to open Health Check window.



- **Health Check status**

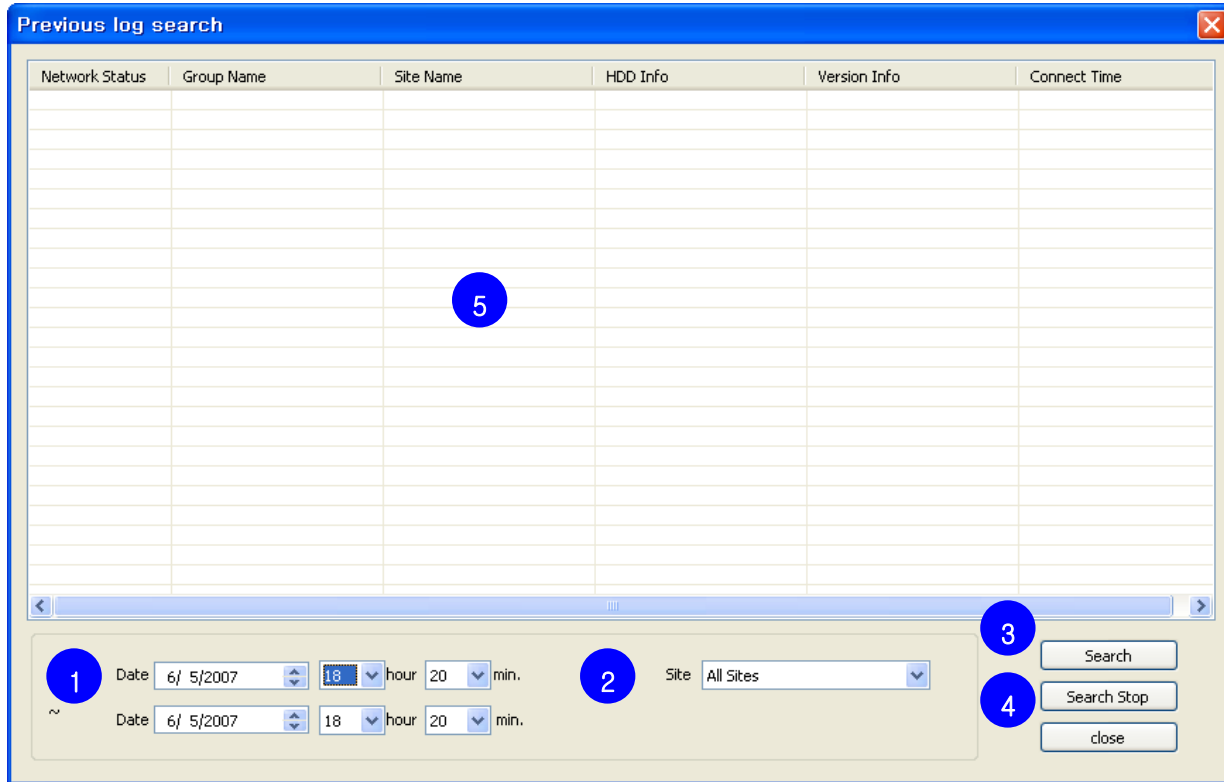
Health Check window shows current status of DVR.

1. **Network Status:** Shows current network status of DVR with red (disconnected) and light blue (connected).
2. **Group Name:** Shows group name of the site.
3. **Site Name:** Shows registered site name.
4. **HDD Info:** Shows HDD information, total capacity of DVR installed.
5. **Version Info:** Shows Current software version information.(Version name and date)
6. **Connect Time:** Shows connect time.
7. **Previous log search:** Status is being saved as log and log can be searched by "Previous log search"

8.1.2 Previous log search

- Previous log search window

Click "Previous log search" button in Health Check window to check previous log.



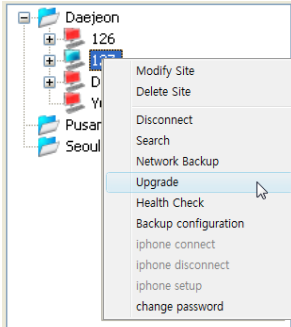
Search Steps:

1. Specify date range.
2. Select site.
3. Click "Search" button to startup search.
4. To stop search, click "Search Stop" button.
5. Previous log search result will be shown in the grid area

8.2 Upgrade Software

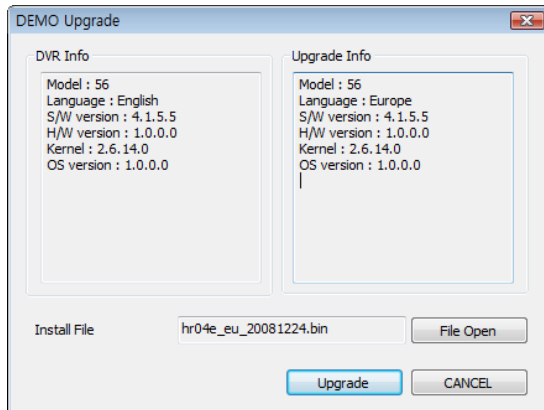
● Upgrade Menu

Upgrade is to upgrade software of DVR.



Right mouse click on the site name of the list and select "Upgrade" on the menu to open upgrade software window.

● Software Upgrade



DVR Info: Shows information of DVR.

Upgrade Info: Shows Information of Upgrade file.

How to upgrade:

1. Click "File Open" button and find install file.
(x.upgrade)
2. Click "Upgrade" button to upgrade software.

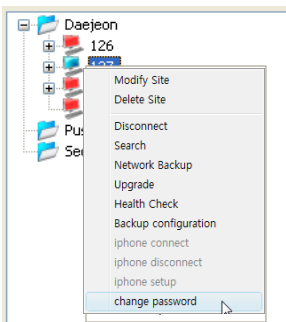
Notice:

Before upgrade, disconnect to DVR.
.upgrade file and bin file should be together in same folder.

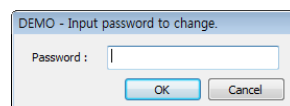
8.3 Change Password

● Change Password Menu

Change Password is to change password of current user accessed.



Right mouse click on the site name of the site list and select "Change Password" on the menu to open change password window.



Input password and click OK to save changed password

Notice: Some DVR software will not support this function.