

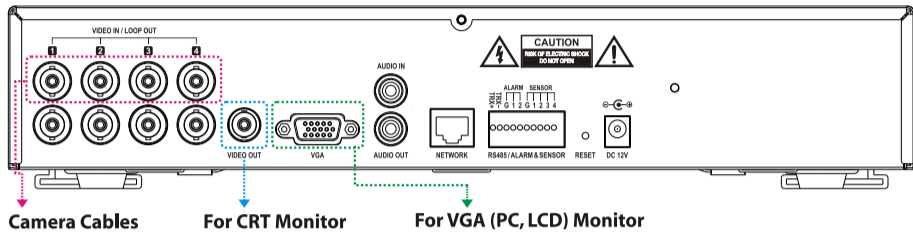
# Quick Guide for using DVR

## 1. HOW TO START



1 Connect Power cable as shown left. System starts automatically once the power cable is connected.

2 Connect camera cables for monitoring and recording, and VGA cable for monitor display (if you have CRT monitor use BNC connector)



## 2. HOW TO LOG-IN

3 Requires ID and PW to enter main menu of DVR system. Default ID and PW are as follow : **ID : Admin / Password : None**

**Login**

ID :

Password :

OK Cancel

1 2 3 4

4 **NO Password** is set as default PW. Please **DO NOT** forget to set new PW for the system security. For new password setting please go to password setup menu under Password of Menu on the screen (**MENU > SYSTEM > Password**).

## 3. HOW TO RECORD

5 DVR starts recording automatically when cameras are connected. DVR will record images at 15ips (images per second) for each camera with standard image quality as default. More detail recording options can be set in the system.

Please refer to the manual 2-3-1. **MENU > RECORD > Record Setting** or 2-3-2. **MENU > RECORD > Schedule**.

**RECORD : Record Setting**

HDD Overwrite  
 Audio Record  
 Simplex Record Mode

Resolution : CIF

Mode	ips	Quality
Default(Time)	15	Standard
Default(Event)	15	High

OK Cancel

MENU 0% 2008-03-01 12:00:00 AM

2-3-1. MENU > RECORD > Record Setting

**RECORD : Schedule**

Day	From - To	Mode	Camera	Setting	X
1 MON-FRI	09:00-18:00	Time	1,2,3,4	Default	X
2 MON-FRI	00:00-09:00	Event	1,2,3,4	Default	X
3 MON-FRI	18:00-24:00	Event	1,2,3,4	Default	X
4 SAT-SUN	00:00-24:00	T&E	1,2,3	User	X
5 HOL	00:00-24:00	T&E	1,2,3	User	X
6					X
7					X
8					X
9					X
10					X

Add Holiday OK Cancel

MENU 0% 2008-03-01 12:00:00 AM

2-3-2. MENU > RECORD > Schedule

### \* Note

- For proper recording, recommended HDD should be installed before turning on DVR.
- HDD needs to be formatted before recording.** Please refer to 2-1-6. **MENU > SYSTEM > Storage** in main manual for HDD format instructions

**SYSTEM : Storage**

HDD :  Format

Record Period : From  To

S.M.A.R.T. ———

Disk Status : Good  
 Temperature : 42C/107F Threshold : 55C/122F

OK Cancel

MENU 0% 2008-03-01 12:00:00 AM

2-1-6. MENU > SYSTEM > Storage

## 4. HOW TO PLAYBACK

6 Press 'Playback' button to enter playback mode or click right mouse button to select 'Playback' option. If press 'Playback' button during playback, it will pop up the playback menu.

Below menu appears when click on the right mouse button

Display ▶

Sequence

PTZ

Backup

**Playback**

Setup Menu

MENU 0%

Select Playback to enter main menu of Playback

Display ▶

Hide Status Bar

Mute Audio

Go to Time

Go to Beginning

Go to End

Calendar Search

Event Search

Exit Playback

MENU ◀▶⏪⏩⏹ PRUSE 2008-03-01 12:00:00 AM

- 7 Select desired search option form the main menu
- Go to Time** : enter time/date to search specific data
    - Go to Beginning : Move to the very first recorded data.
    - Go to End : Move to the latest recorded data.
  - Calendar Search** : search recorded data using the calendar format
  - Event Search** : search for specific event

### \* USB Port

- USB ports on the front panel provides following functions :
- Back Up files using USB Flash Memory or USB-IDE HDD
  - Control the system using USB Mouse
  - Save/Load the system settings using USB Flash Memory.



## 5. HOW TO BACKUP

8 Press the 'Backup/Move' button or go to Backup menu under Contextual Menu appears by clicking right button on the Mouse to enter Backup menu.

\* **Note** : But the button can be also used to display menu to load PTZ presets under PTZ mode.

Use USB Storage (USB Memory) to backup recorded data.

Recommend to have USB device connected before go into back up menu.

**BACKUP**

USB Device : Flash

File Name : untitled

From : 2008-03-01 12:00:00 AM  
 To : 2008-03-01 12:30:00 AM

Camera :  ALL  1  2  3  4  
 Audio

Status : Please Insert USB Disk Update

OK Cancel

MENU 0% 2008-03-01 12:00:00 AM

More detail instructions on backup can be found in the main manual. Please refer to the manual 2-1-6. **MENU > SYSTEM > BACKUP**

### \* ICON GUIDE

MENU 0% 2008-03-01 12:00:00 AM

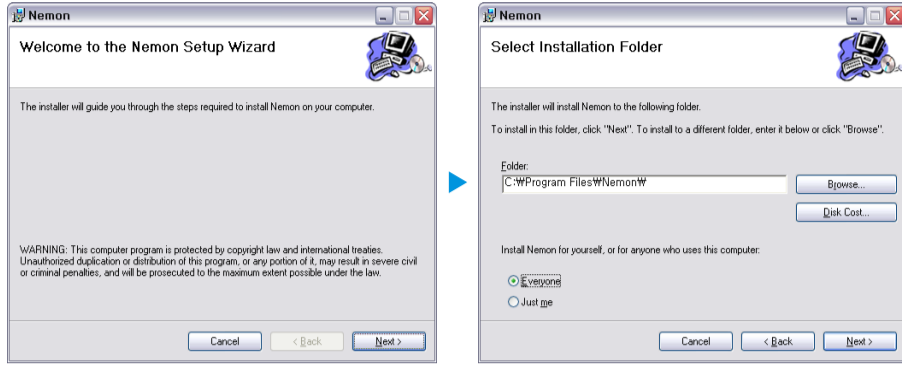
- MENU** : Pressing the Menu will bring up the main menu list  
 "%" : Shows the % of HDD being used  
 : Turns on when the HDD is set to be overwritten.  
 : Turns on when the system is connected to the Nemon.  
 : Turns on when the Alarm is being activated

- : Recording
- : No Recording
- : Event Recording
- : Pre Event Recording
- : Motion Detection
- : Sensor Detection
- : Sequence
- : PTZ Camera

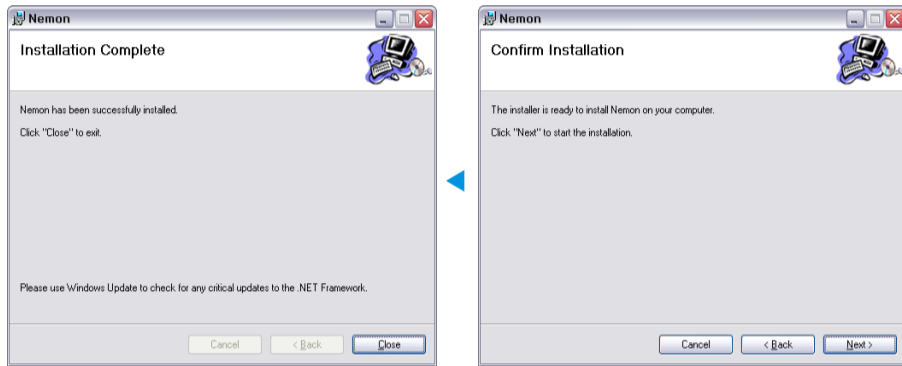
# Network Monitoring S/W

## 1. HOW TO INSTALL

- Find Program CD contains 'Nemon' program in the box and Insert CD into PC. Double click on Nemon.exe file to start installation procedure.

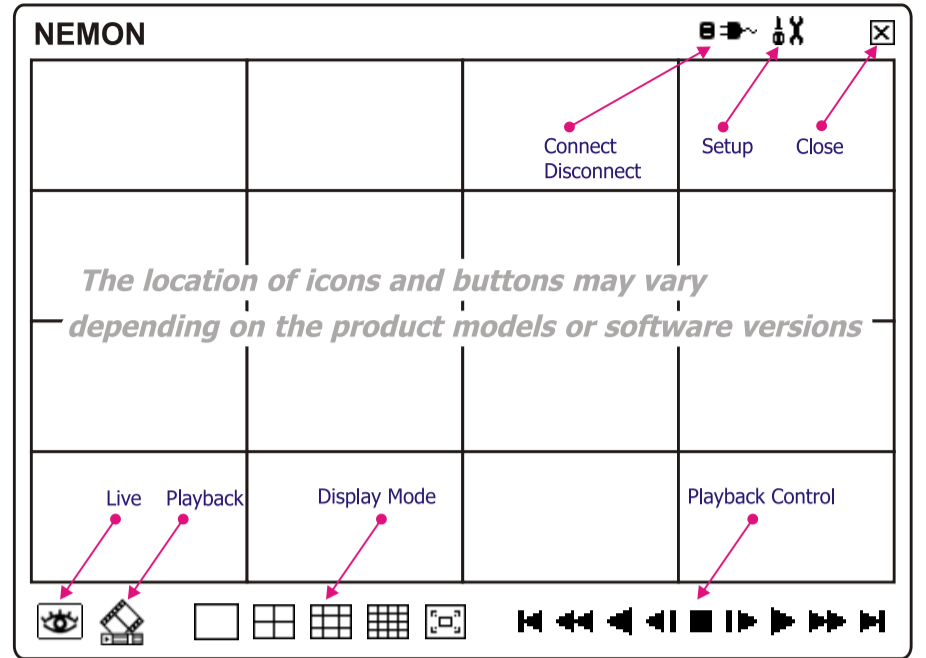


- Everyone** : Allow all PC users to get access to Nemon program
- Just me** : Allow only private PC user access to Nemon program



## 2. HOW TO USE NEMON

- Double click Nemon icon to start the program

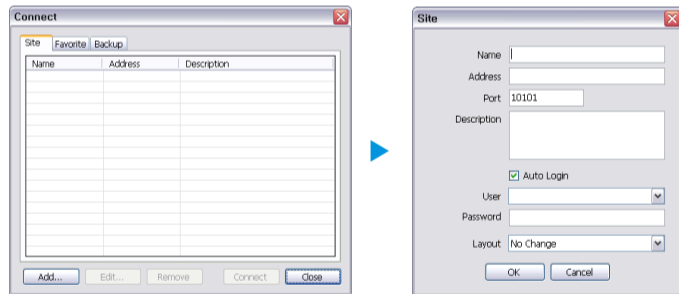


- Live** : click the image to enter the watch mode
- Playback** : click the image to enter the playback mode
- Display Mode** : select display modes (single screen, 2x2, 3x3, 4x4 and full screen)
- Connect / Disconnect** : click button for site setup and connect
- Setup** : click button for remote program setup
- Close** : click the image to close the program

**\* Note** : Live mode should be disconnected before entering the search mode.  
Click to disconnect the site, and click to enter search mode.

## 3. HOW TO REGISTER DVR

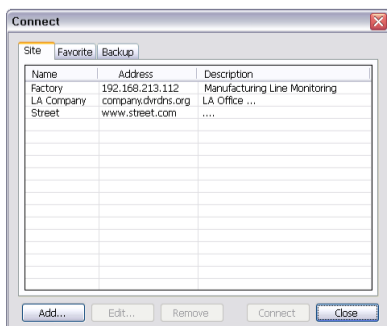
- Click button to display registered remote locations or add new locations.



- Click **Add** button to add remote location and required information.
  - Name** : Enter Site Name
  - Address** : Enter IP address or domain name of the site
  - Port** : Enter port number if there is a specific port to be set for the program
  - Description** : Enter the description of the site
  - Auto Login** : Check auto login for the site to be connected automatically when start the program
  - User** : Select the type of user from the list
    - \* Admin : allows full access to all the program functions
    - \* User : only allows limited access to the system (monitoring only)
  - Password** : Enter the password of DVR
  - Layout** : Select desired display layout for the site when it is connected

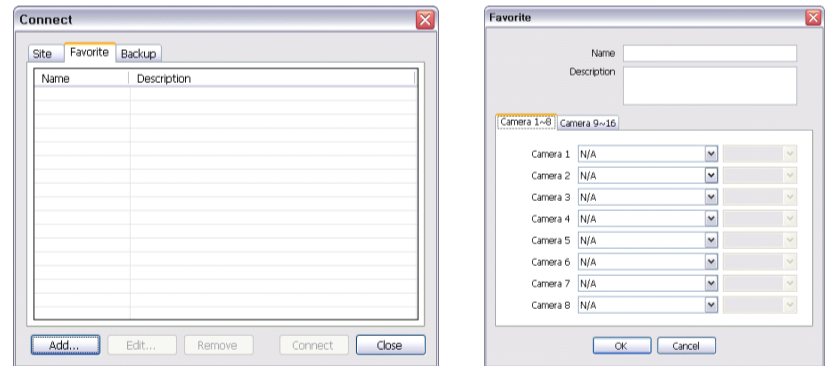
**Note** : Layout can be changed after begin connected using the display option on the menu.

- Click **OK** to save information and complete the registration.
- Double click the location or Highlight it and click **Connect** button to get connected to the site.



## 4. HOW TO SETUP FAVORITE

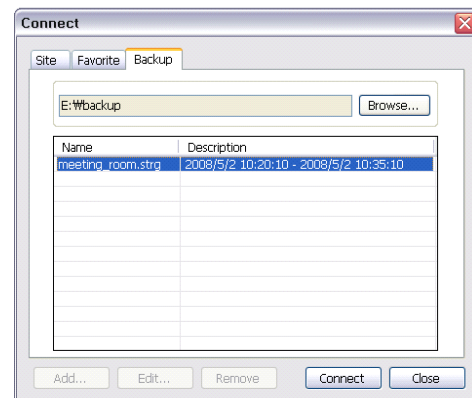
- Favorite function allows multi site management. Up to 16 different cameras and sites can be monitored and managed on one screen.
- Click button and select **Favorite** tap.



- Click **Add** button to group multiple sites as one favorite group.
- Enter the group name and description. Up to 16 different cameras or sites can be grouped and displayed together.
- Select sites and cameras from the drop down list by clicking button.

**Note** : sites should be registered under 'Site' menu before setting the favorite.

## 5. HOW TO PLAY BACKUP DATA



- Backed up data from the local site can be played on the remote site.
- Select the location where the data is saved.
- Select the file and click **Connect** to play the video.