

1 Software Installation 7

1. Automatic Installation	9
- Definition	9
- Installation Method Selection	9
- Installing Drivers	9
- DVR File System Installation	10
- Completion & Retry	13
2. Manual Installation	14
- Definition	14
- Installation Method Selection	14
- Software Selection	14
3. Remote Client Installation	15
- Using MagicRadar S/W	15
- Using the Web Browser	16
4. Uninstallation	21
5. Program Execution	21

2 Main System Application 23

1. Startup Screen	24
2. Login	24
3. Exit/Logout	24
4. System Information	25
5. Control Screen	25
6. Setup	26
- System	26
- DVR Information	26
- System Time Setup	27
- System Power Management	28
- Auto Switching Interval	28
- E-Map	28
- TV-out	31
- On-Screen Display	33
- Text Inserter	35
- Hard Disk Usage	38
- I-Phone	38
- Maintenance Log	39

- Device	39
- Camera	40
- Output Device	60
- Input Device	61
- Audio	62
- Alert	63
- Event	65
- Input	65
- Motion Detection	67
- No Video Signal	68
- Watchdog	68
- Schedule	71
- Camera	71
- Manual(Instant) Recording	73
- Device	74
- Network	74
- DVR Server	75
- Web Sever	76
- Central Station	76
- E-mail	77
- Dial Alarm	81
- User	83

3 View Log Application (Status) 85

1. Screen Features	86
- Event Log	87

4 Playback Application (Search) 89

1. Search Features 1	90
2. Search Features 2	91
- Playback	91
- Event/Object/Text/People Count Search	92
- Monitoring & Searching	97
- Bookmark & Go To	98
- Save	99
- Print	104
- Backup	104

5 Remote Monitoring System (Client) 121

1. Program Execution	122
2. Remote Save and Backup	124
3. Real Time Audio	125

Appendix 1 POS DVR 127

1. Hardware Installation	128
- Parts	128
- Installation	130
2. Software Installation	131
- Installation & Setup	131

Appendix 2 I-phone 135

1. Installation	136
2. Execution	137
3. Audio Setup	138

Appendix 3 MDVR 141

1. Installation	142
- Start	142
- Selection of Installation Method	142
- On Installing	143
- Finish	143
2. Overview	144
3. Execution	144
- properties	144
- Log in & Log out	146
- Set up	147
4. Search	151
- Save	151
- Back up	152

Appendix 4 Access Control DVR 155

1. Configuration Diagram	156
2. Installing FP Server	157
3. Installing "Access Control Server"	157
- On Installing	158
- Finish	158
4. DVR setup	159
- Set up	159
5. Access Control Search	161
6. Access Control Client	162
- Installing	162
- Execution	162
- "Access Control Client" setup	163

>> Windows Based DVR



1. Product Specification

Models	T04 / TT16 / TS04 / TS16 / CS04 / CS08 / CD08 / CS16 / CD16 / LS16 / LD16 / LL16 / LL32
Displaying Speed	30fps(NTSC), 25fps(PAL)/ 30, 25/60, 50/60, 50/120, 100/120, 100/240, 200/120, 100/240, 200/480, 400/480, 400/480, 400/960, 480
Recording Speed	30fps(NTSC), 25fps(PAL)/30, 25/60, 50/60, 50/120, 100/120, 100/240, 200/120, 100/240, 200/120, 100/240, 200/480, 400/800, 400
Video Inputs	4 / 16 / 4 / 16 / 4 / 8 / 8 / 16 / 16 / 16 / 16 / 16 / 32
Audio Inputs	1 / 1 / 2 / 2 / 4 / 4 / 8 / 4 / 8 / 4 / 8 / 16 / 16
Sensor Inputs	4 / 4 / 4 / 4 / 4 / 16 / 16 / 16 / 16 / 16 / 16 / 16 / 16
Alarm Outputs	2 / 2 / 2 / 2 / 4 / 8 / 8 / 8 / 8 / 8 / 8 / 8
Video Resolution	D1, Half D1, CIF
Compression Type	MPEG-4
Supported Signal Types	NTSC, PAL
Supported Network	TCP/IP, PSTN
Supported Backup Devices	HDD, DVD/R, CD/RW, Network Driver, etc.
Supported PTZ Protocols	C&B Tech-CND100200&SMART, Changzhou Minking-Minking, CTNCom-HD0670, Dong Yang Unitech-DSC230, DRAGON-DRAGON, Dynacolor-TPD7720, Geosar-GRX1000, GOLDENEYE-GOLDENEYE, InterM-VRX2201, KALATEL-KTD312, KJK-KJK, LG-LPTA100L, PELCO D&P, SAMSUNG-SCC641&SDZ160R&SPD1600&SPX1000&SPT1000, SONY-EVID3031, Vicon-Survey&2000, ZITEC-ZITECH, etc.
Operating Systems	Windows XP, Vista
Supported Languages	English, Spanish, Japanese, French, Traditional Chinese, Simplified Chinese, Portuguese, Hebrew, Polish, German, Finnish, Greek, Hungarian, Korean, etc.

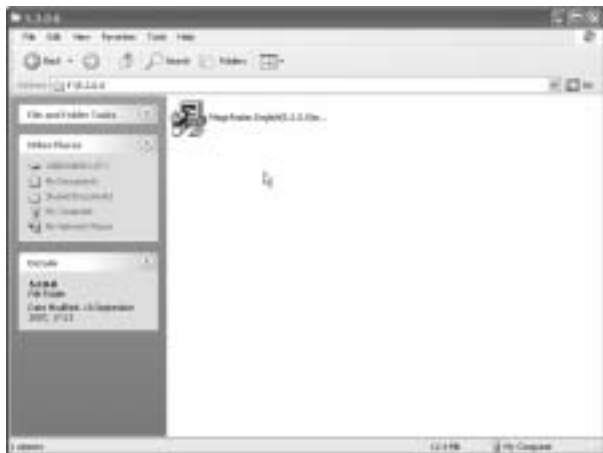
Digital Video Surveillance System - MagicRadar

Software Installation

- > Automatic Installation
- > Manual Installation
- > Remote Client Installation
- > Uninstallation
- > Program Execution

Steps:

1. Insert MagicRadar S/W.
2. Double-click "MagicRadar. English(5.2.0.0).exe".



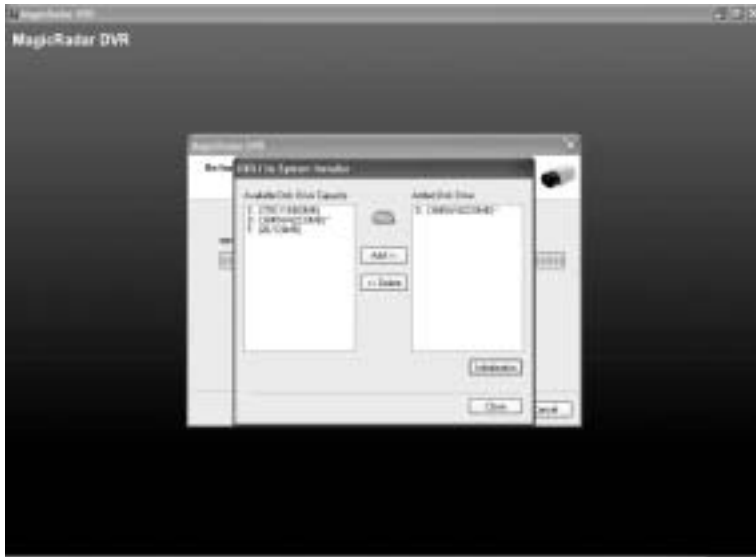
ネ

**1. Automatic Installation****(1) Definition**

It is a method to install all the relevant softwares automatically. Select "Automatic Installation" at all times unless only "MagicRadar Client" is to be installed.

(2) Installation Method Selection**(3) Installing Drivers**

(4) DVR File System Installation



Definition:

Occupying disk capacity to record data

Steps:

1. Select drives from "Available Disk Drive Capacity"
2. Click "Add".
3. Click "Initialization".

Caution:

1. Be very careful not to add "C Drive", for it is used for O/S and the DVR softwares.
2. HDD has to be initialized to record data



Selecting "Quick Initialization" will lead to the initialization of entire disk capacity added. Otherwise, put in desirable number to initialize. Note that the number can not exceed total capacity added.

Initializing With Archiving the Data: This is to increase DFS storage by taking additional space from the current "Reserved Capacity". So new value for "Reserved Capacity" can not exceed the current one.

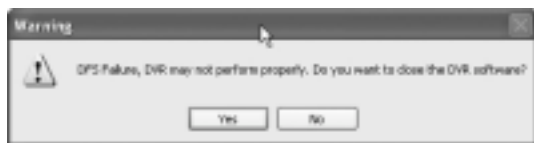
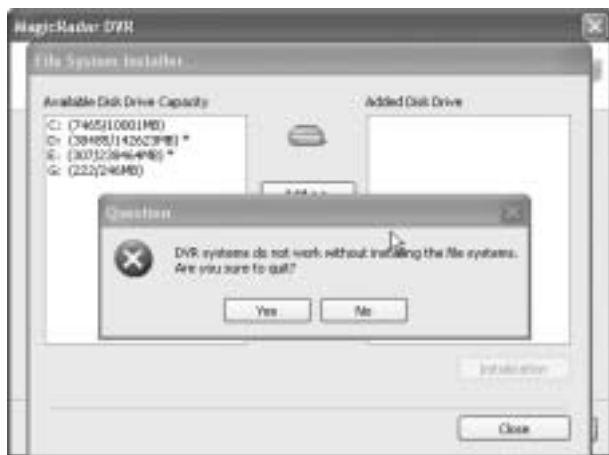
Minimum 300MB is recommended for DVR performance.



Initialization process will be performed automatically. Click "Close" upon completion.



At least one of "available disk drive" must be added for data storage. Otherwise, the alert message will pop up.



(5) Completion & Retry



Retry the entire procedure if an error message is displayed.

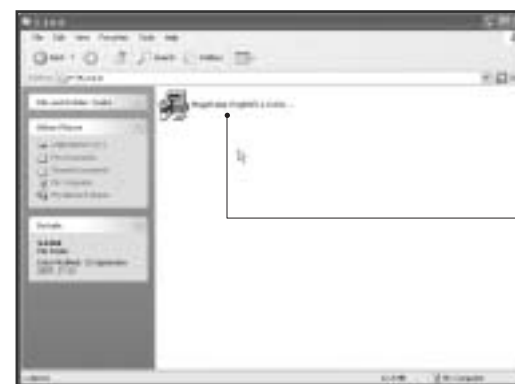
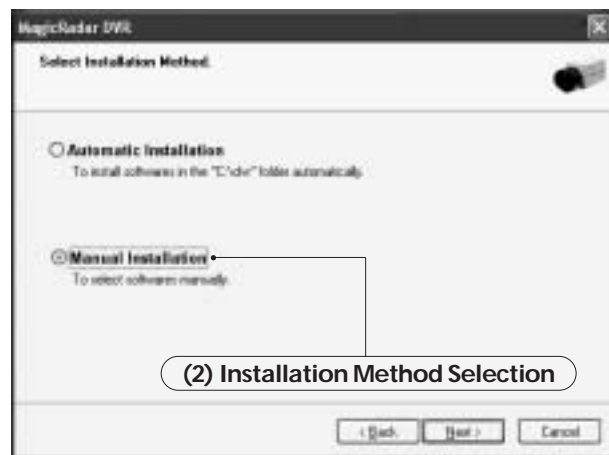
2. Manual Installation

3. Remote Client Installation

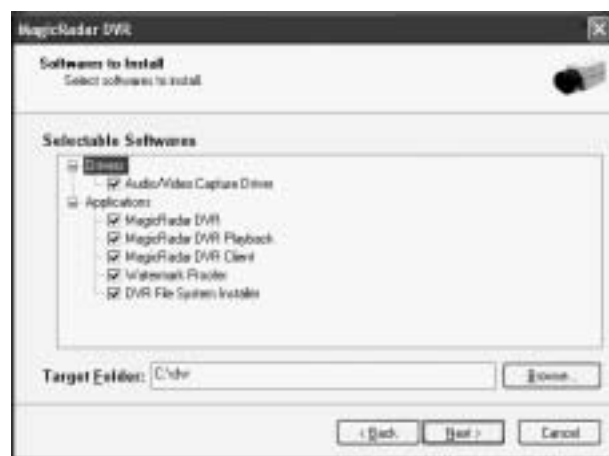
(1) Definition

It is a method to install selected softwares manually.
 Select "Manual Installation" only in the case of "MagicRadar Client" installation.

(1) Using MagicRadar S/W

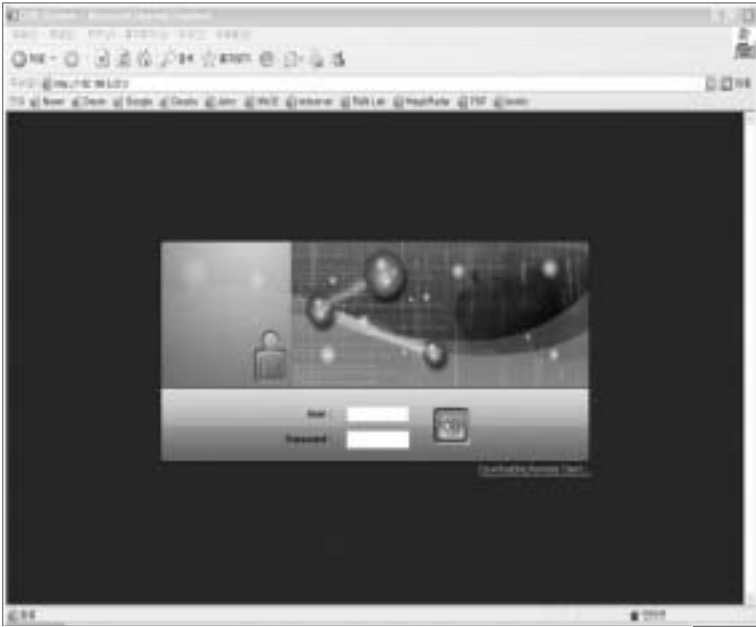


(3) Software Selection



Note: The rest of the procedures are the same as "Automatic installation".

(2) Using Web Browser



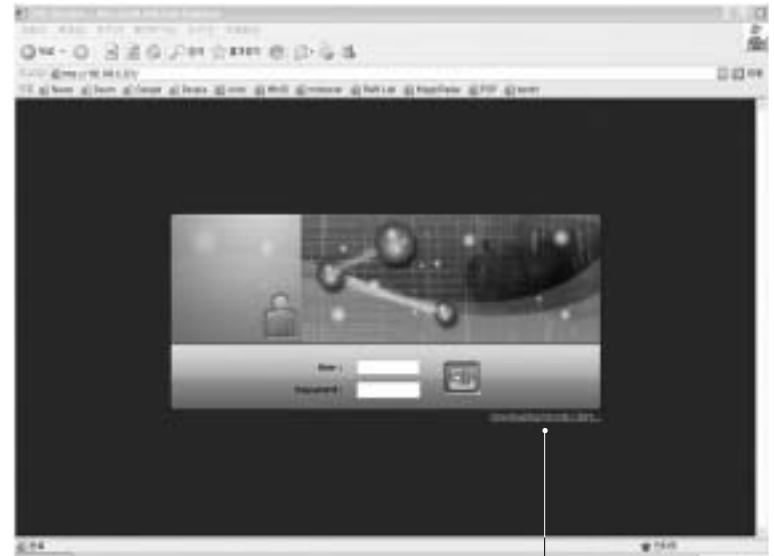
1. Type in the IP address of DVR server.
2. Log in first before downloading Remote Client Program.



1. Live View
2. Screen splits and channel selection
3. PTZ control : Only users with proper authority to control PTZ remotely.
4. Advanced: Controlling preset, tour and E-map only for authorized users.
5. Speed: PTZ speed control
6. To save live image to JPEG
7. To listen Audio of a selected channel applied only for authorized user remotely
8. Mode change between Live and Search
9. Log In/Out or EXIT
10. Display web browser information.



1. Searched Image
2. Selection for image search
3. Play back(Fast back, Back, Stop, Play, Fast Play)
4. Save: AVI, JPEG, BMP
5. Audio
- 6.To change Tab to CONTROL
- 7.Log out and go back to LOG IN page



1. Click the 'Install Remote Client' button for downloading



2. Click "Next" to proceed.



3. Select "Manual Installation".



4. Click "Next" to finish installation process.

4. Uninstallation



5. Program Execution



Find the icons on the desktop to execute "MagicRadar DVR" and "MagicRadar DVR Client". Or find "MagicRadar DVR" under "All Programs".

Digital Video Surveillance System - MagicRadar

Main System Application

- > Startup Screen
- > Login
- > Exit / Logout
- > System Information
- > Control Screen
- > Setup (System/Device/Event/Schedule/Network/User)

1. Startup Screen



The above screen will appear as MagicRadar DVR system starts.

2. Login



The default values for User and Password are “admin” and “no password”. Click “OK” to execute MagicRadar DVR system. To give “admin” a password and to create new users, certain configurations are required(Setup/User). Only “admin” and users with appropriate authorization have access to the Setup menu.

Note: Virtual keypad is available on the right top of GUI if needed.

3. Exit/Logout



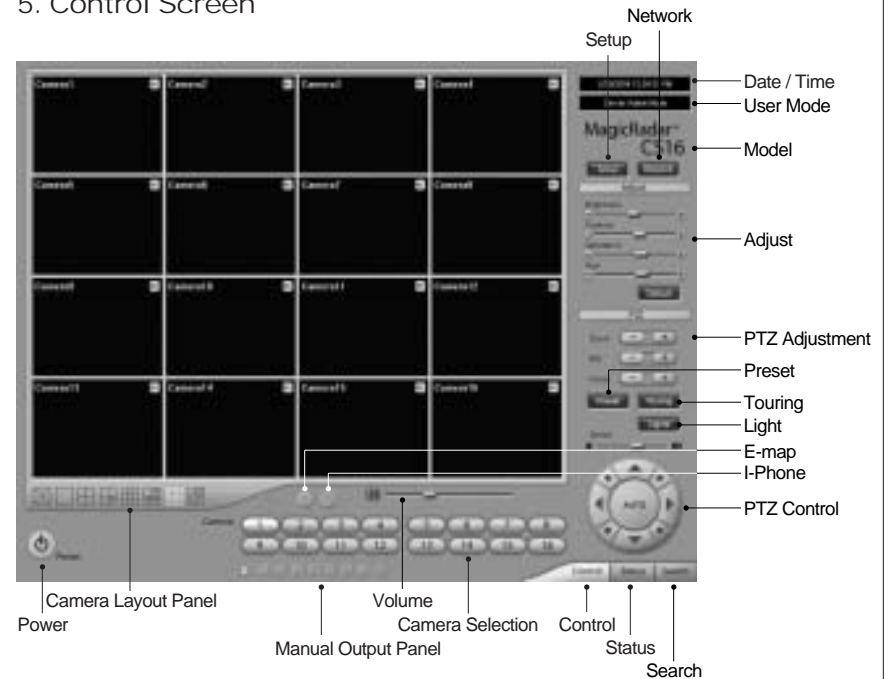
To end MagicRadar DVR system, select “Exit” and type in password.

4. System Information



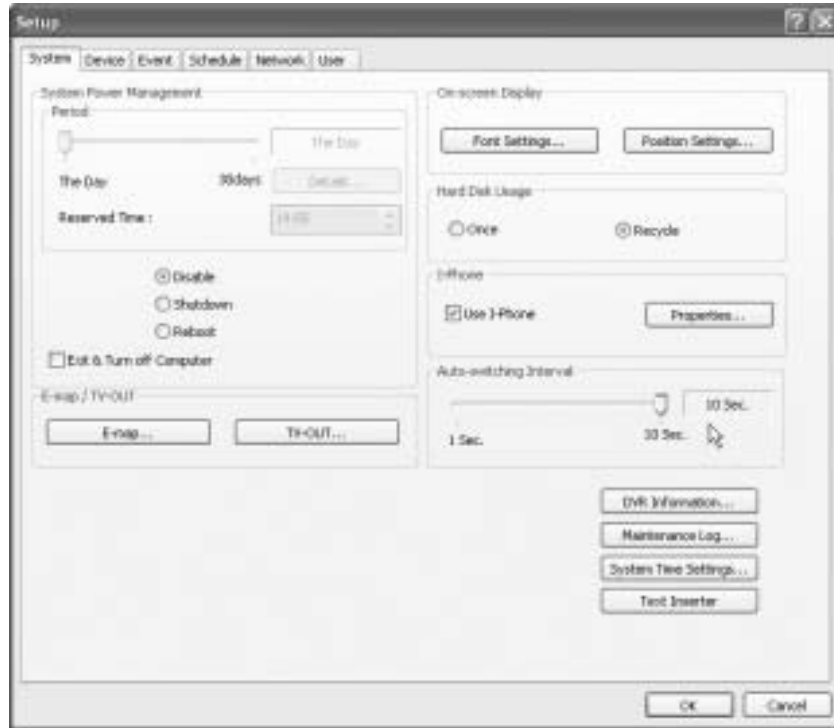
Click on System Information to see DVR system information, such as OS version, CPU, RAM, HDD, IP address, DVR model and DVR software

5. Control Screen



6. Setup

(1) System

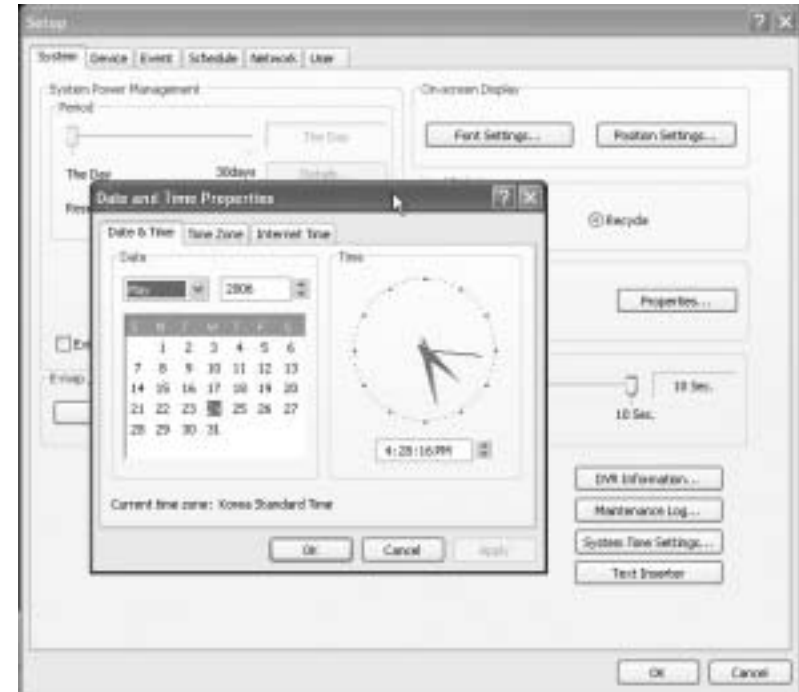


DVR Information



Create a system name and put in administrator. info. They will be displayed on outgoing e-mails.

System Time Setup

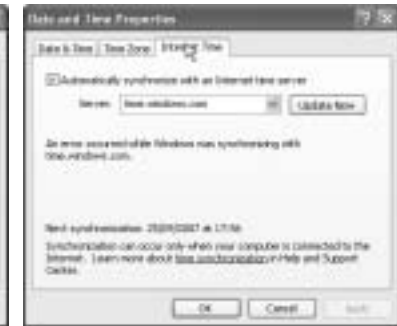


By clicking "System Time Setting", users is able to set Date and Time in DVR software.



Time Zone: To change Current time zone in DVR system.

Internet Zone: To synchronize with Internet time server automatically.



System Power Management



Period : Select a day that DVR system reboots automatically by the period.

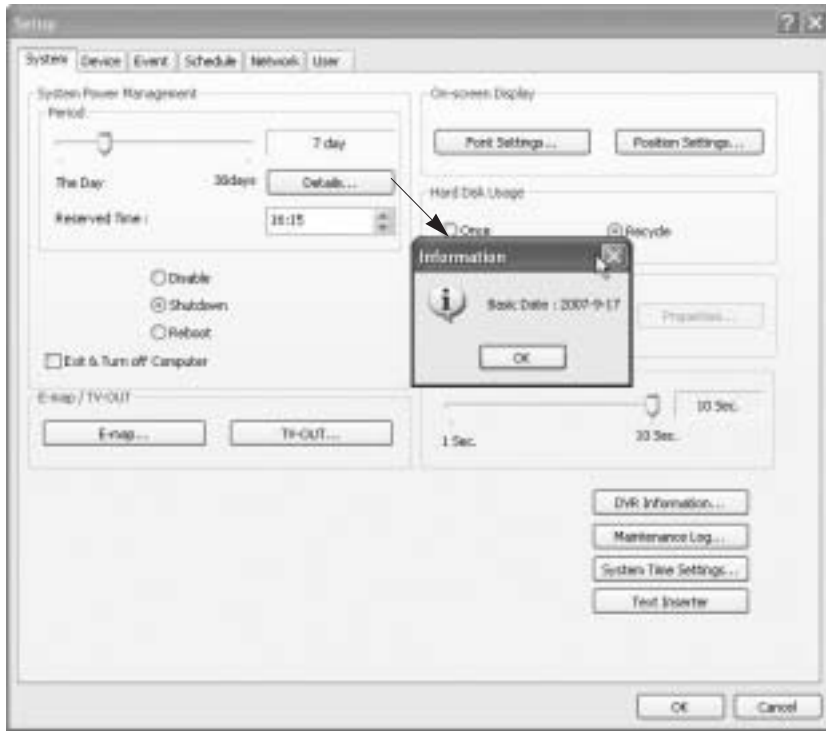
Reserved time : Time set to shut down or to reboot DVR system

Disable : selected when System Power Management is not to be used

Shutdown : selected when shutting down computer is required at the time set

Reboot : selected when rebooting DVR system is required at the time set

Exit & Turn off Computer : By checking this box, computer will be turned off automatically as a user exits from MagicRadar DVR system.



Details: First select either "Shutdown" or "Reboot" to enable Period. For example in above picture, 7 days after the basic date, system will shutdown automatically. "Details" shows the set date and it will be the starting point.

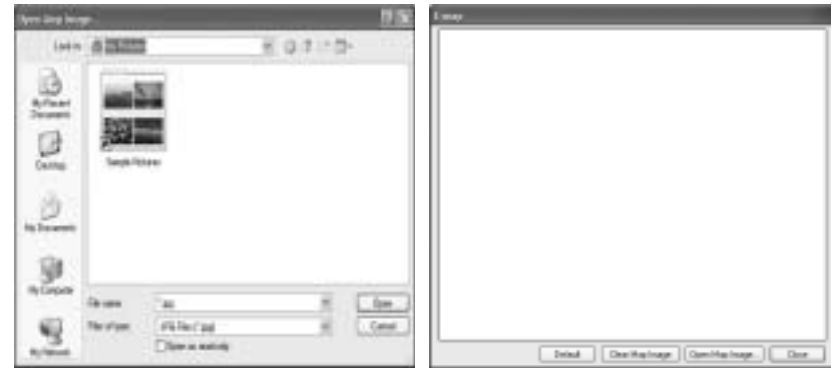
Auto-switching Interval



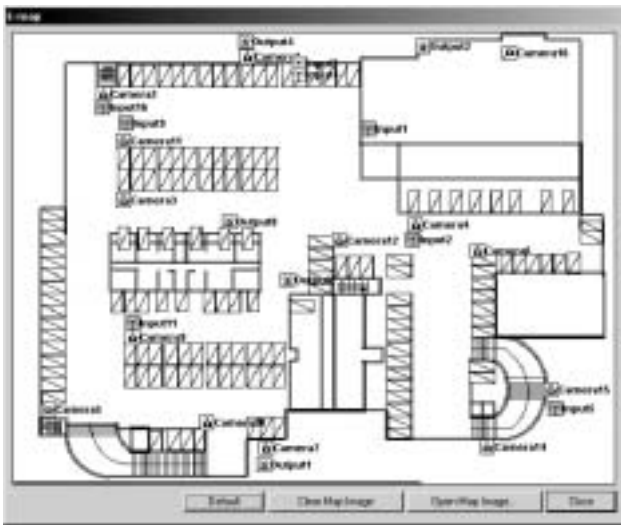
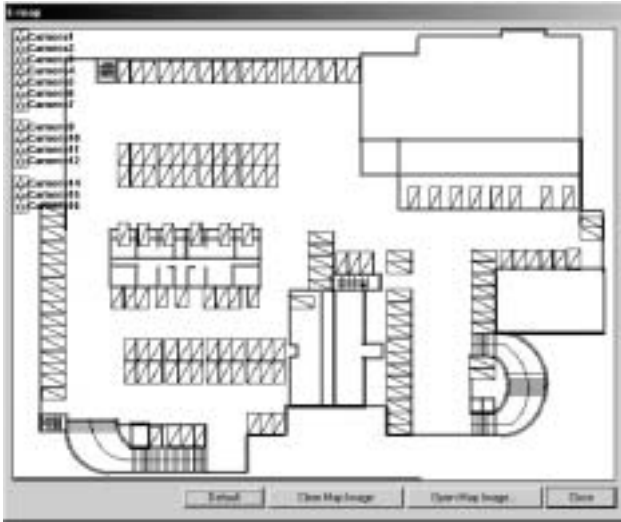
Auto-switching Interval is a function that allows green square around selected camera to move to the next one at the interval set.

e.g.) Camera1 10 sec. Camera2 10 sec. Camera3...

E-map



Click on the "E-map" button to design E-map.
Click on "Open Map Image" to select an E-map image.



The above is a designed E-map sample.
 Drag mouse to position Camera/Input/Output and design E-map.

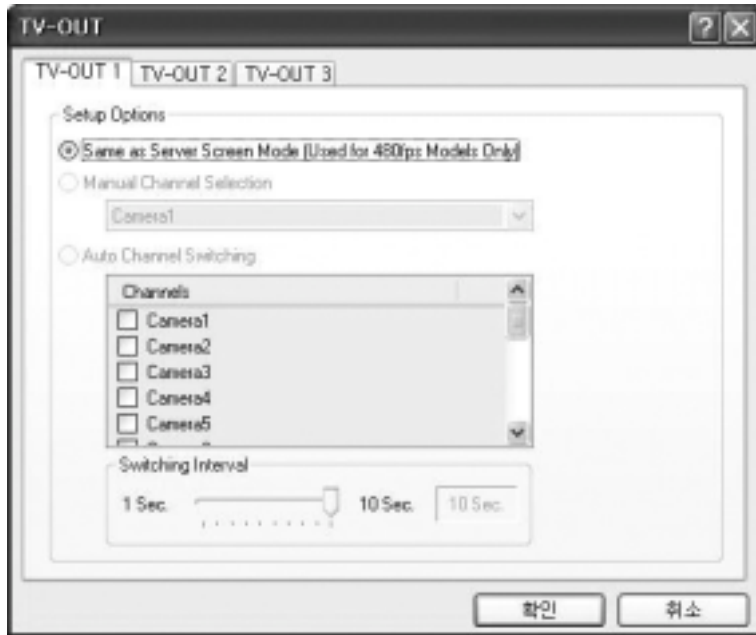


Click on the E-map button positioned next to the I-phone button to open E-map.
White Camera : Not on Recording, **Yellow Camera**: On Recording,
White Input/White Output : Not Activated, **Yellow Input/Yellow Output**: Activated

TV-OUT



TV-OUT is a function that sends selected cameras to a call monitor (external analog monitor). Click on the "TV-OUT" button for setup.



The Number of TV-out Supported

T04	T08	T12	T16	CS04	CS08	CS16	CD16	CD08	LS16	LD16	LL16	LL32
1	2	3	4	1	1	1	2	2	2	3	2	2

The models such as CD (240FPS/240FPS), LS(480FPS/120FPS), LL16(480FPS/480FPS), and LL32(960FPS/480FPS) support 2 TV-OUTs. LD16(480FPS/240FPS) support 3 TV-OUTs and the rest of the modules support 1.

Setup Options :

1. Same as Server Screen Mode (For LS16, LD16, LL16 and LL32 only)-TV-OUT Monitor displays what's on DVR server.

Manual Channel Selection - Channels are selected manually. Once "Manual Channel Selection" is selected, channels can also be selected manually on Control screen by placing mouse on camera picture and clicking the right mouse.

2. Auto Channel Switching - Selected channels rotate to display at the switching interval set.

Switching Interval:

The length of time to stay at one camera

On-screen Display



Font Settings: Font change on screen display.



Position Setting: Position change on screen display.

On a camera screen, you may click one right mouse to control OSD as belows.

Show Camera Names and Status :

By checking it, camera names and status will be displayed on camera pictures.

Show Motion Detection Blocks :

By checking it, green motion detection blocks will be displayed on camera pictures when recording schedule is set as "M" (Setup/Schedule).

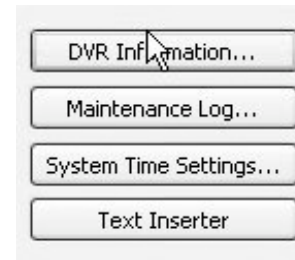
Show Object Detection Blocks :

By checking it, blue object detection blocks will be displayed on camera pictures.



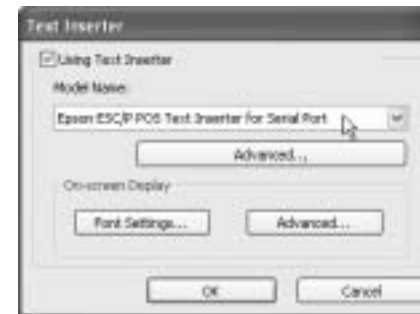
Note: One right mouse click can be a very useful tool. Manual TV-out and OSD setup can be done. Additionally, instant recording can start by one click.

Text Inserter



Text Inserter is a function that allows MagicRadar DVR system to integrate with POS machines. Simply select POS driver like selecting PTZ driver to enable POS text inserter program and transactions that occur will be displayed on selected camera pictures. Transaction recording and text search are possible as well.

For more detailed installation and information, refer to Appendix 1.

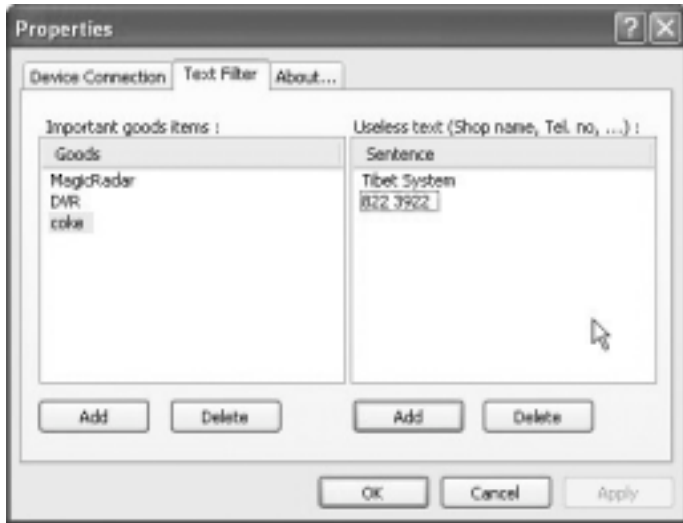


How to Set

1. Tick the "Using Text Inserter"
2. Choose a connected POS driver.
(POS driver is addable as PTZ protocol adding.)
3. Click on Advanced to set hardware feature.



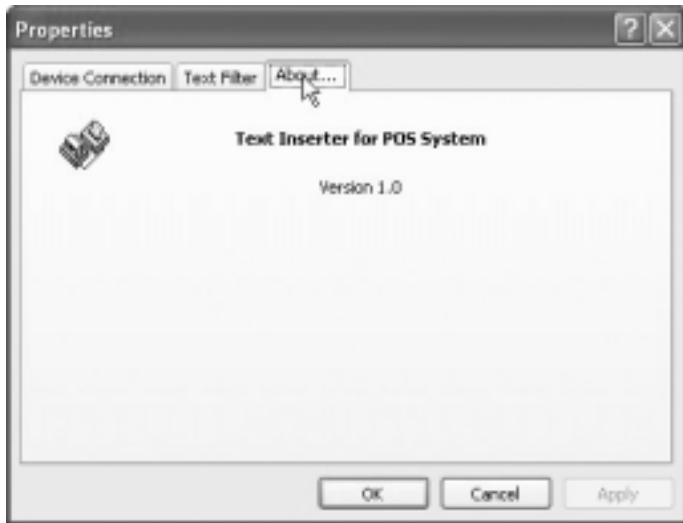
Device Connection: Select camera(s) and a comport connected with POS system(s)



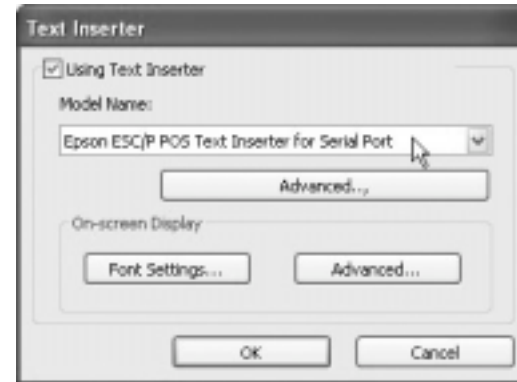
Text Filter: Register important goods and useless text to display distinguishably and search POS data conveniently.

Important goods items: Pre-registered items will be displayed in red characters.

Useless text: It is not going to be displayed during transaction.



About: Shows POS S/W version.

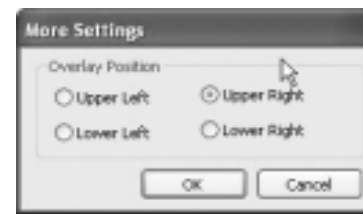


Font Settings:

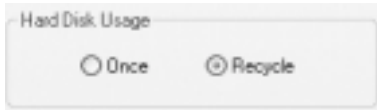
Font change on screen display.

Position Setting:

Position change on screen display.

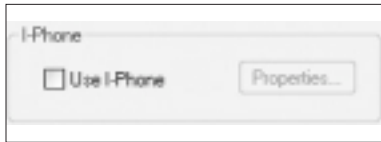


Hard Disk Usage



Hard Disk Usage is to select data storage method. If "Once" is selected, data will be stored up to the point where HDD reaches its maximum capacity. If "Recycle" is selected, data will be overwritten from the point HDD reaches its maximum capacity based on "First In First Out".

I-Phone



I-phone is "Two-Way Audio Communication". Check the box, go to Control Screen, and click on the I-phone button for audio communication. For more detailed I-phone setup, refer to Appendix 2.



Port No.:
A port number for I-phone use has to be set up. Normally the default value is good to use.

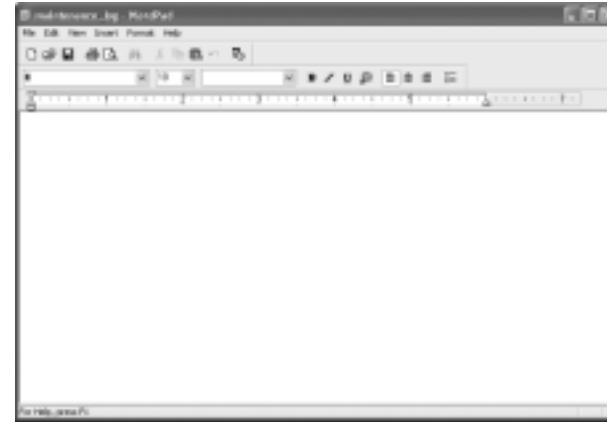
Timeout:
It indicates the maximum length of connection trial. If there is no response within the value set, call will be cancelled.

Accept Automatically:
To accept counter part's IP-phone connection without checking a confirmation message.

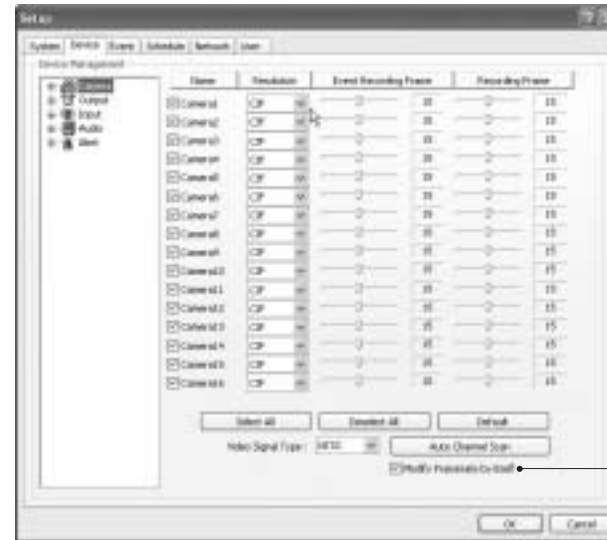
Maintenance Log



It is used to record and view maintenance history.



(2) Device



Modify Framerate itself:
By ticking it, DVR software will automatically allocate proper frames to channels.

Device sub-screen is divided into 5 different setup categories; Camera, Output, Input, Audio and Alert. All devices in each category can be set up on one same page.

Camera

Cameras will be enabled by checking the boxes.

Different resolutions and recording frame rates can be set up for different cameras.

Video Signal Type:

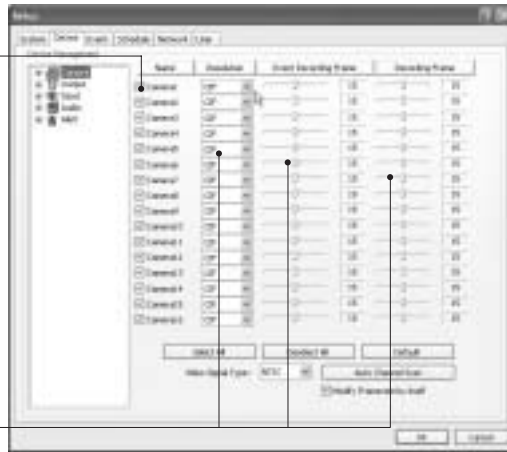
Select either NTSC or PAL.

Auto Channel Scan:

It automatically identifies all the active video channels. Make sure to always click and scan after S/W version change.

Default:

It sets "Event Recording Frame" and "Recording Frame" as default values.



[Camera]

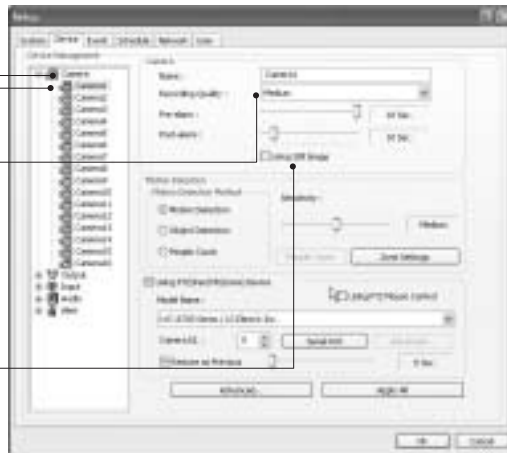
Double-click on "Camera" for more individual Camera setup.

Select recording picture quality.

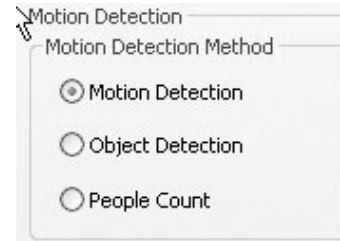
Using Still Image:

It is a function that captures still image when Recording schedule mode is set as E or H. LH16 model can't use this function.

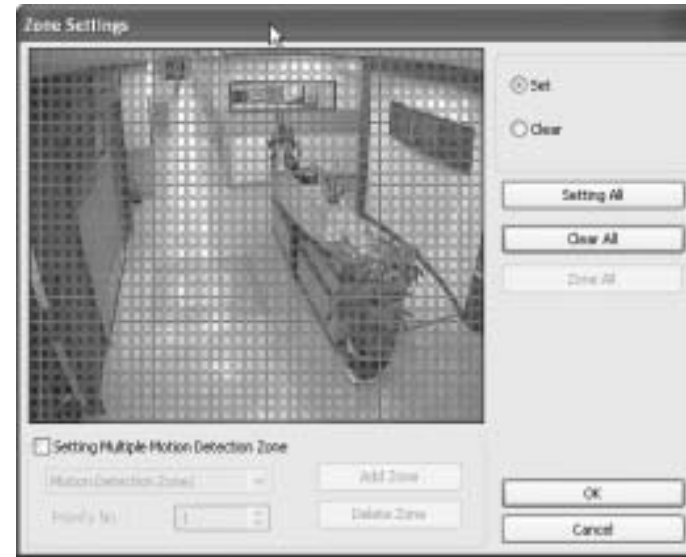
(Caution) Under R mode at Recording schedule, this function stop recording the channel.



[Motion Detection]



Select a function between Motion detection, Object detection and People Count. Motion detection is a function that DVR software detects every movements or motions by comparing a frame with the previous frame.



Zone Settings:

1. Drag mouse on desired place to set motion detection zones.
2. To clear the zones set, click on "Clear all" or drag mouse after click on "clear":.

Pre-alarm (max. 10 sec.): Length of time to be recorded before event

Post-alarm (max. 60 sec.): Length of time to be recorded after event



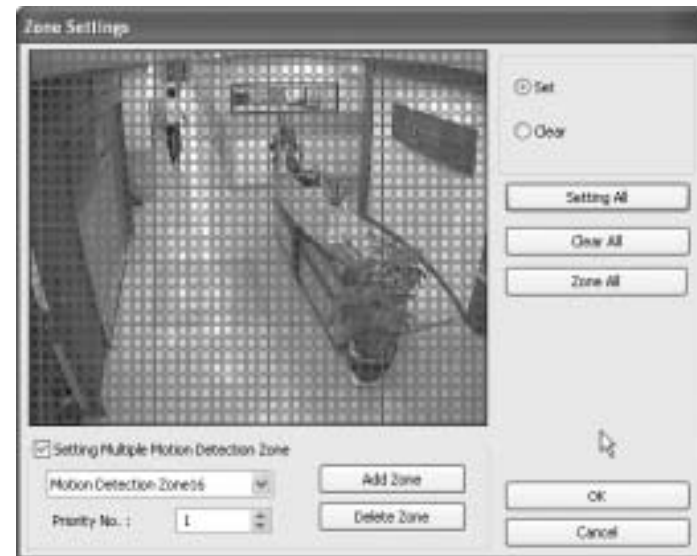
Setting Multiple Motion Detection Zone: To set more than one motion detection zone. Possible up to 16 motion detection zones with all different colors.

How to set: Click on “Add Zone” and select another zone desired to be detected.

Note: If the number of zones exceeds 16, below error message will be appeared.



Zone All: Displays all areas together that have been set for the zones.



Setting All: Selects whole area

Delete Zone: Deletes zones one by one.

[Object Detection]



It is a function that marks all the changes occurred from the original scene. MagicRadar will detect new & missing objects after a certain period of time (detecting interval).

Detecting Interval: An interval that DVR tries repeatedly to detect any object change in the zone set. For example, if the object is appeared and remained only 5 seconds, it will not be detected in case 1 min. detecting interval is set as above.

Viewing Original Frame: Checking an original image set.

Set as Original Frame: Save an original image to be surveilled to check missing or appeared object.

Set: To mark a zone.

Setting All: Select all zone in a selected channel

Clear All: To clear set zone.



Object Detection Blocks

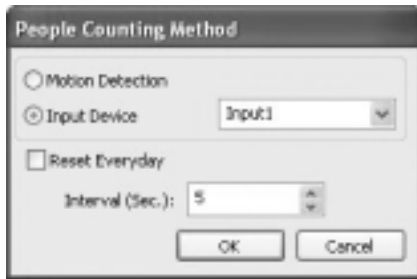
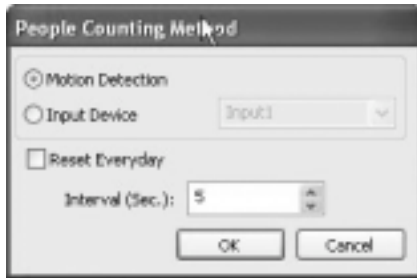
Click the right mouse and select "Clear Object Detection Blocks" to remove all the blocks.

How to Set up:

1. Drag mouse to set object detection zone (same as Motion detection).
2. Click the Set Frame button to set original image.
3. Go to the Detecting Interval and determine when to mark new object after its pause.
4. Go to Setup/Schedule and select M for the corresponding camera.
5. Go to Control Screen and find the red-squared Object Detection symbol.
6. One click on the View Original Frame will display original image set.
7. Click it again to reactivate the Set Frame button.

[People Count]

It is a function that counts people coming in and out of a certain place.

**How to Set up:**

1. Set Count Interval.
2. Set zone by dragging mouse.
3. If a directional counting is needed, select one.

Motion Detection: Counting by Motion Detection.

Input Device: Counting by Input Device such as sensor.

Reset Everyday: Tick box to reset everyday automatically.

Interval(Sec.): Counting interval from the time object is detected.

Check Movement from 1st Zone to 2nd: Counting based on the direction a place to another.

Check Movement from 2nd Zone to 1st: Counting based on the direction a place to another.

Set: Set the first zone.

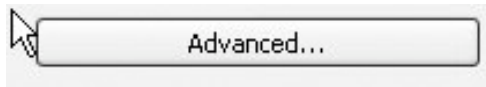
Set 2nd Zone: Set the second zone to be detected.

Clear: Clear the zone selected.

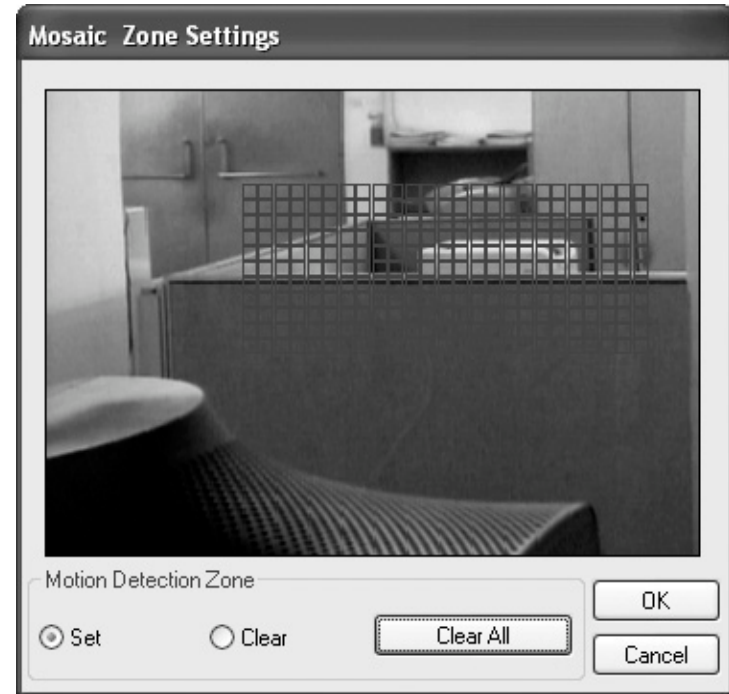
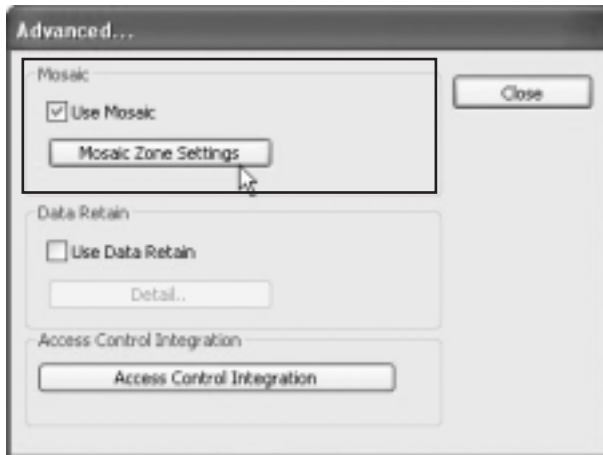
Setting All: Selects all areas on the screen.

Clear All: Clear all zones selected.

[Mosaic]



It is a function that veils restricted areas to keep regular users uninformed.



How to Set up:

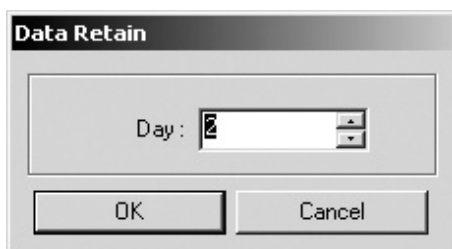
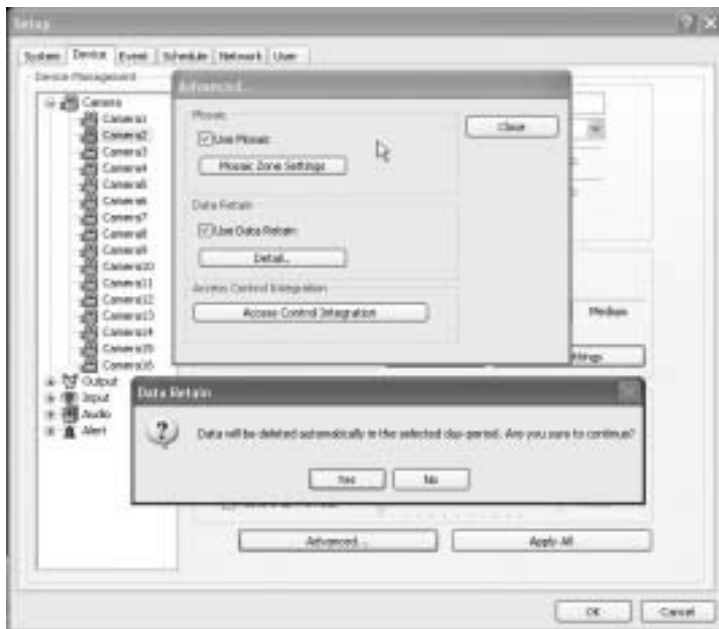
1. Tick the "Use Mosaic" box.
2. Click on "Mosaic Zone Settings".
3. Set "Mosaic Zone".
4. Go to the "Control Screen" and find veiled areas.

Note:

1. While using Mosaic, "Save" or "Print" can not be performed.
2. To see unveiled area, logging in as "Admin" or "Admin Mode" is required.

[Data Retain]

It is a function that retains data only for the period set. For example, if 10 days is set, MagicRadar will delete all previous data before 10 days regardless of the capacity remaining in HDD.

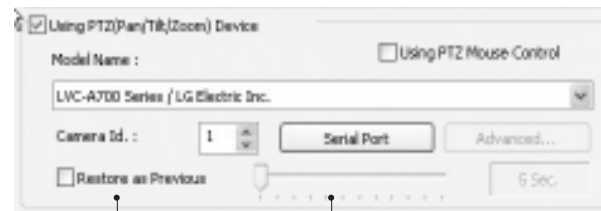
**How to Set up:**

- Click on "Advanced"
- Tick the "Use Data Retain".
- Click on "Detail" to select a day period to retain

Note: Warning message to inform as above will be appeared. To continue, click on "Yes"

[PTZ Camera Setup]

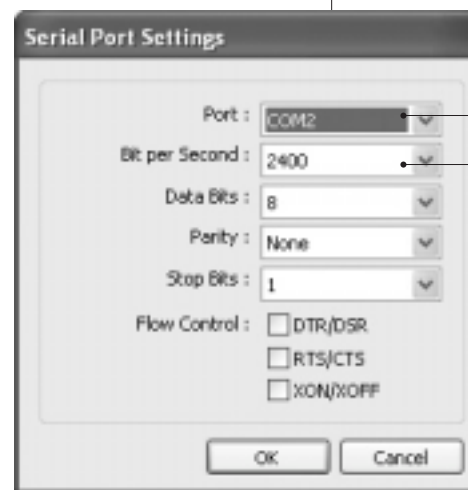
When using a PTZ camera, check the box and select a model name. MagicRadar DVR system supports nearly 40 different protocols.

**Camera ID:**

Leave it as it is if only one PTZ camera is used. Otherwise, give each camera a different number.

Restore as Previous:

Tick the box and set time period to move camera back to initial position after a certain period of time.



Select the port used for PTZ camera.

Bit per Second:

It is 9600 for most of PTZ cameras. But a few can have different values. Refer to camera manual.

Apply All:

The same settings will be applied to the rest of the cameras by clicking on "Apply All".

[PTZ Control by Drag and Drop]

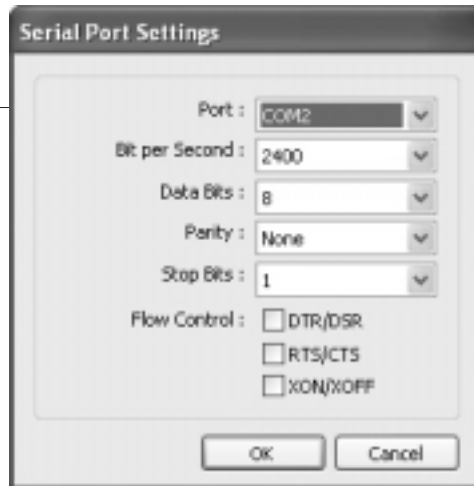
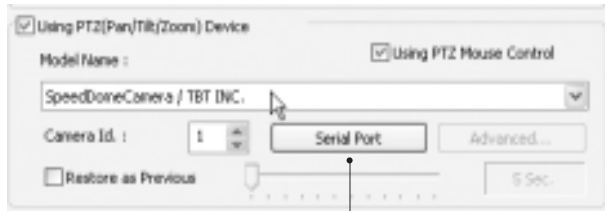


How to Set Up:

1. Simply ticks "Using PTZ Mouse Control" as above and select a proper PTZ model name.
2. On a PTZ screen, drag mouse to the desired position to see.



[Virtual Keypad for Speed Dome Camera]



How to Set Up:

1. Select "SpeedDome Camera/TBT INC." protocol to run Virtual Keypad.
2. Set proper Camera ID, Port, Bit per Second, and etc.
3. Click right mouse button on PTZ Screen and select "PTZ Keypad".



Click on "Menu" to go into Camera OSD.

Once preset and touring have been set through this virtual keypad, they must be controlled by the keypad.(Menu buttons on GUI will not work.)

For example, when preset 1 is set, press 1 on the keypad and "Preset". Then it moves to the Preset No. 1 position.

Note: Now only limited Speed Dome models are available to run this keypad.

[Preset & Touring]

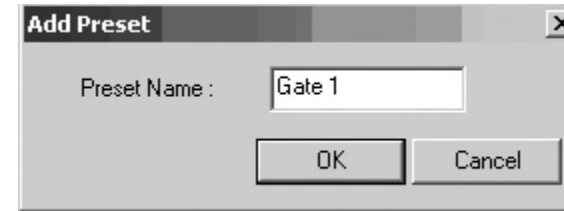


Either click the right mouse on camera picture or click on the Preset (Touring) button for Preset (Touring) setup and use.

[Preset]



"Preset" is a function that enables a camera to move from one position to another automatically.



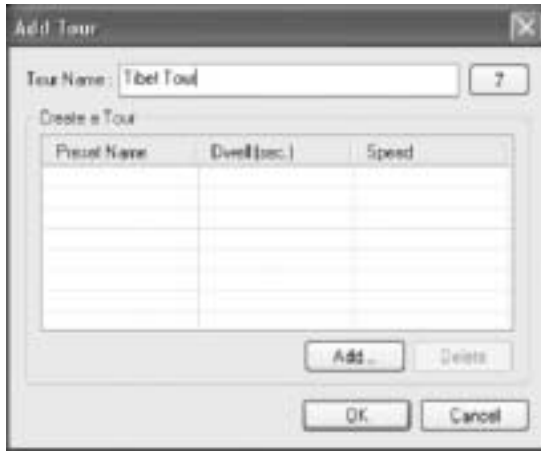
Steps to Set up Presets:

1. Move camera to a desired position using the PTZ Control on Control screen.
2. Click the right mouse.
3. Name the preset.
4. Repeat the above for setting up as many as 256 presets.
5. Click the right mouse to run preset and click the "Auto" button to stop it.



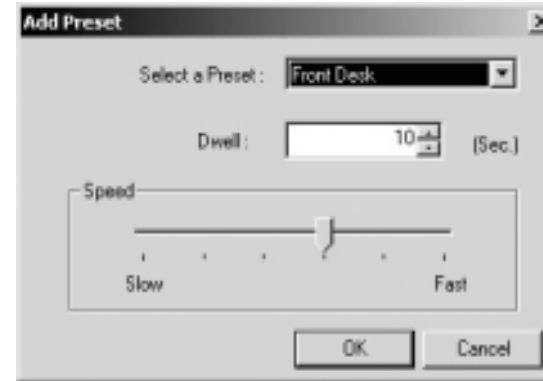
[Touring]

“Touring” is a function that enables a group of selected presets to work repeatedly.



Steps to Set up a Tour:

1. Click the right mouse.
2. Name the tour.
3. Click on “Add”.
4. Select a preset.
5. Click “OK”.
6. Repeat the above to have more than 1 preset in the tour.
7. Click the right mouse to run the tour.

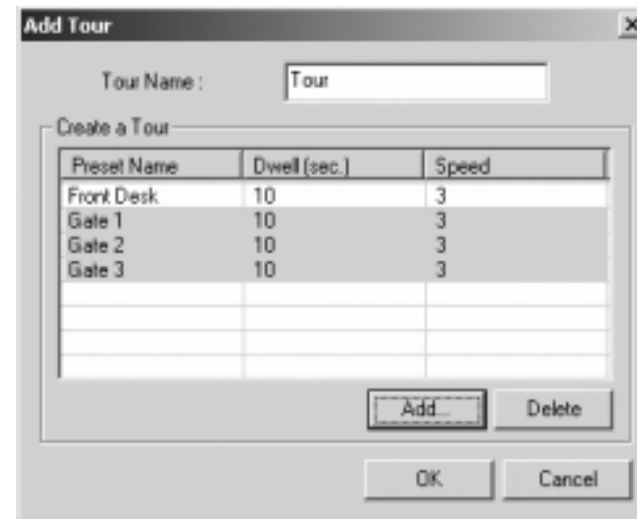


Dwell:

The length of time that camera will pause before moving to the next preset.

Speed:

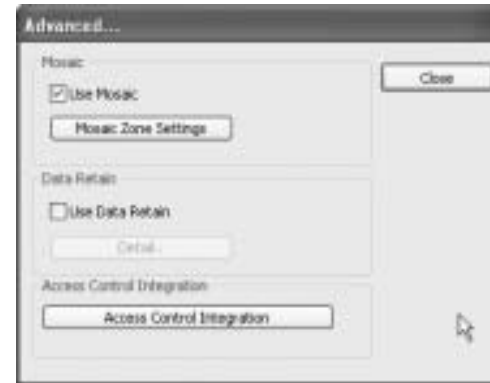
Moving speed for selected preset.





[Access Control]

It is a function that integrates Access Control into DVR system.
For Access control DVR, please refer to Appendix 4 "Access control DVR".



How to Set up:

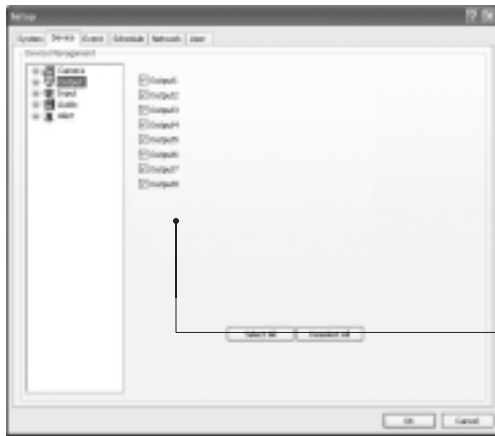
1. Click on "Advanced"
2. Click on "Access Control Integration"
3. Type in "IP Address" and Port Number of access control connected PC.

Note: For more information about Access Control Integration, refer to the appendix 4, please.

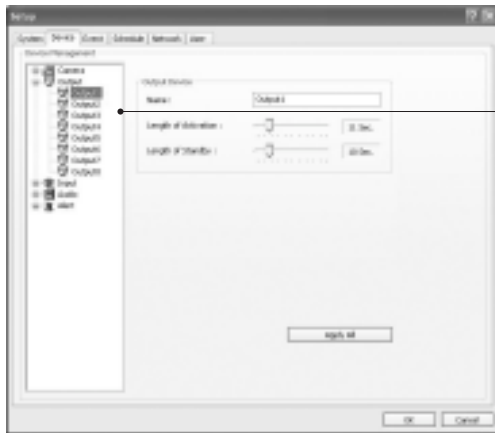


Advanced PTZ setup can be done by one right mouse click. Make sure that the PTZ camera to set up supports advanced PTZ control functions first.

Output Device



MagicRadar DVR system can be equipped with as many as 8 output devices. Simply check the boxes for use. In addition, outputs can be manually activated from Control screen (Manual Alarm).



Double-click on "Output" for individual output setup.

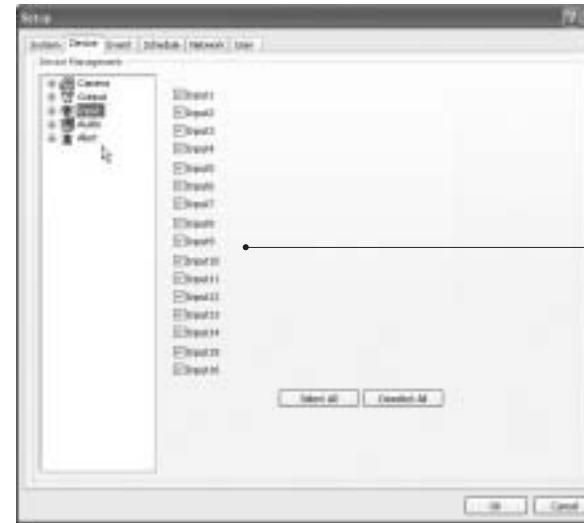
Name: Output device name.

Length of Activation: The length of output activation (1-60 sec.).

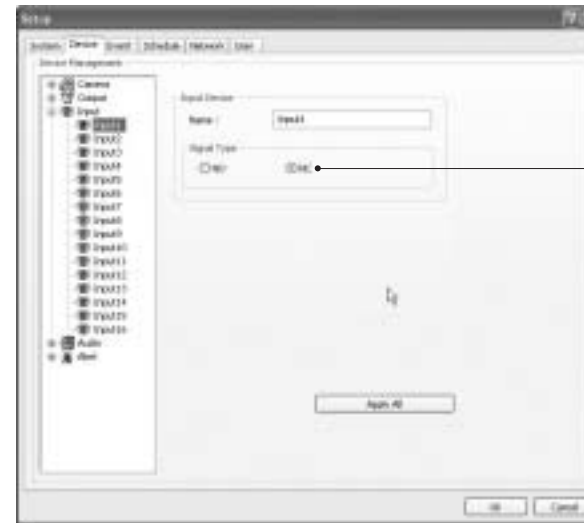
Length of Standby: The length of output deactivation until reactivation (0-60 sec.).

Apply All: The same settings will be applied to the rest of the output devices.

Input Device

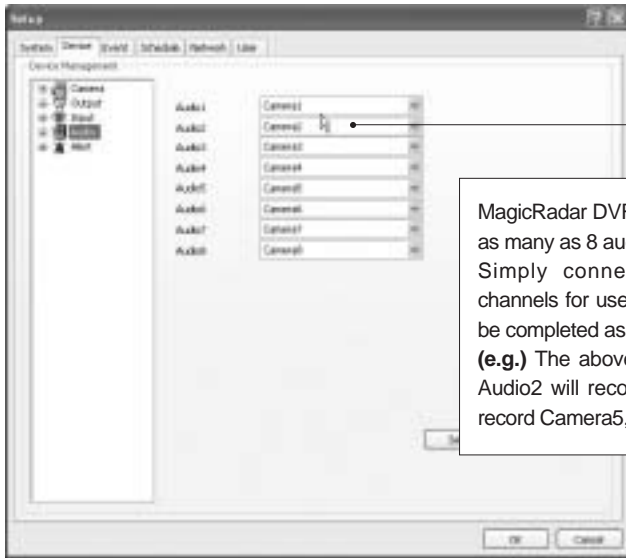


MagicRadar DVR system can be equipped with as many as 16 input devices. Simply check the boxes for use.

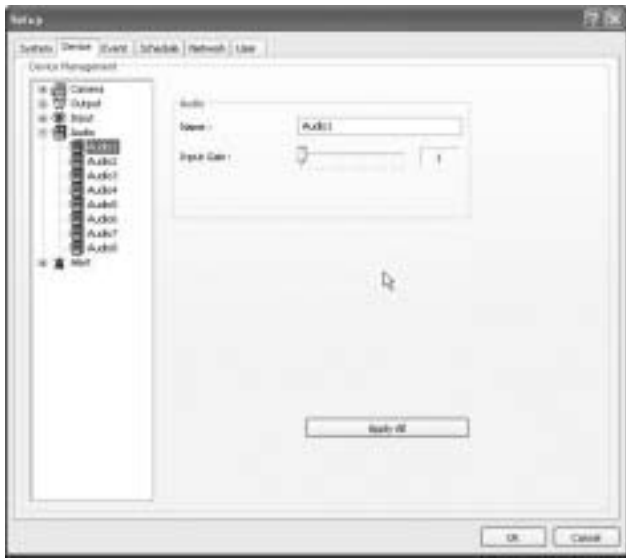


Each and every input can be tuned independently.
Signal Types:
 NO: (+) & (-) detached normally
 NC: (+) & (-) attached normally

Audio

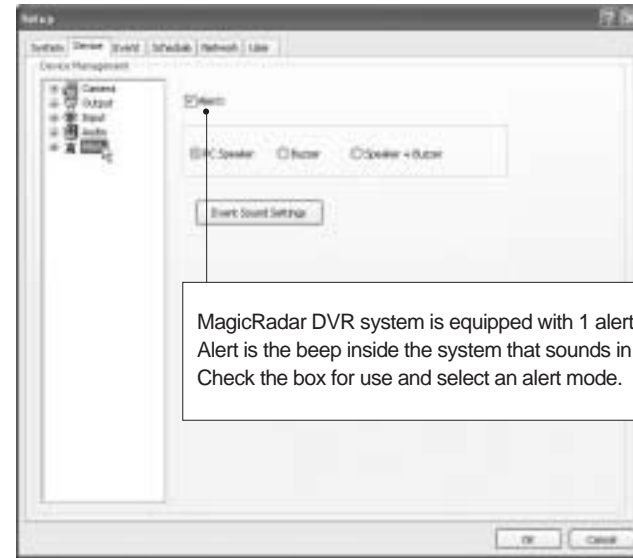


MagicRadar DVR system is equipped with as many as 8 audio channels. Simply connect cameras to audio channels for use, and audio recording will be completed as chosen. **(e.g.)** The above selections indicate that Audio2 will record Camera3, Audio3 will record Camera5, etc.



Input Gain (1-15): It is audio level control similar to volume control.

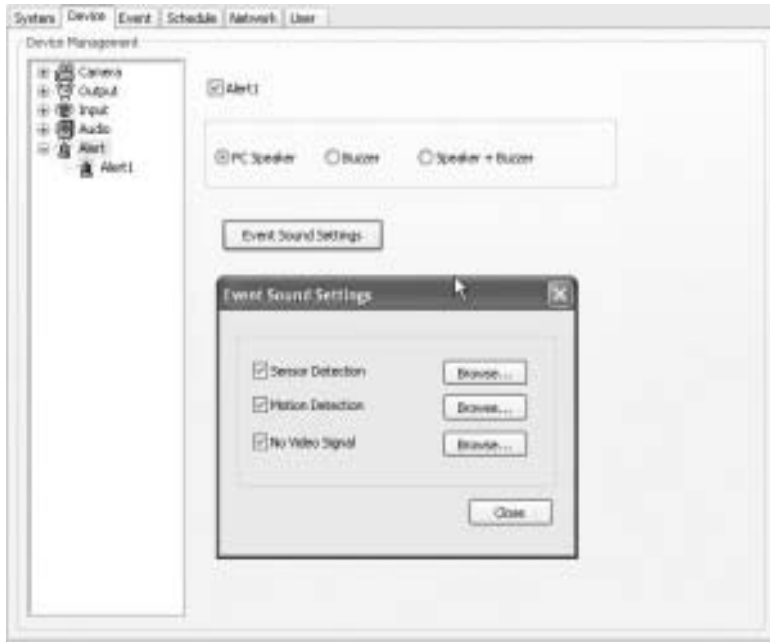
Alert



MagicRadar DVR system is equipped with 1 alert device. Alert is the beep inside the system that sounds in the case of event. Check the box for use and select an alert mode.



Length of Activation: The length of alert activation (1-60 sec.).



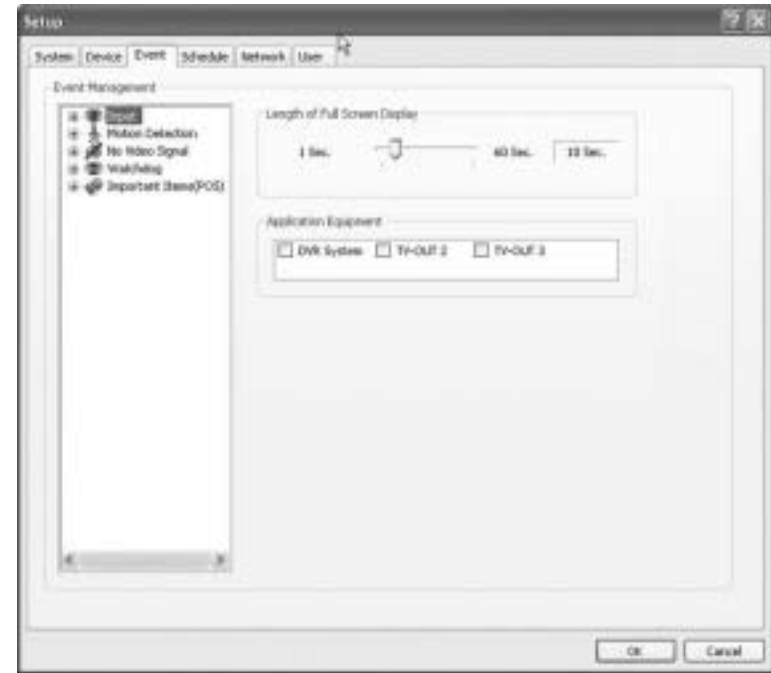
Event Sound Settings:

To differentiate alert sound by Events(Sensor, Motion, and No video Signal), select a Wave File for each.

(3) Event

“Event” consists of 3 different groups; “Input”, “Motion Detection” and “No Video Signal”. On this menu, devices can be set to respond to different events.

Input



Length of Full Screen Display:

The time length for full screen display in the case of input device activation.

Full Screen Display Channels:

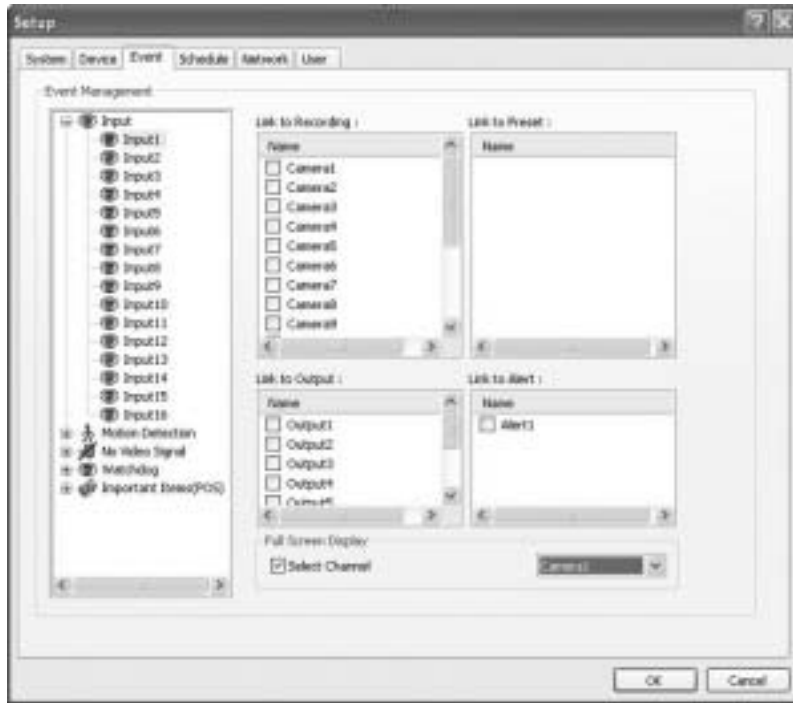
Selected camera channel will pop up if the linked input device is triggered.

The equipment of application:

Events triggered by Input or Motion detection can pop on a desired screen among DVR system, DVR+TV-OUT 2, and DVR+TV-OUT 3

Link to Recording:

One Input device can have as many as 16 recording cameras on activation.
The below example shows that Camera1 will record in the case of Input1 activation.

**Link to Output:**

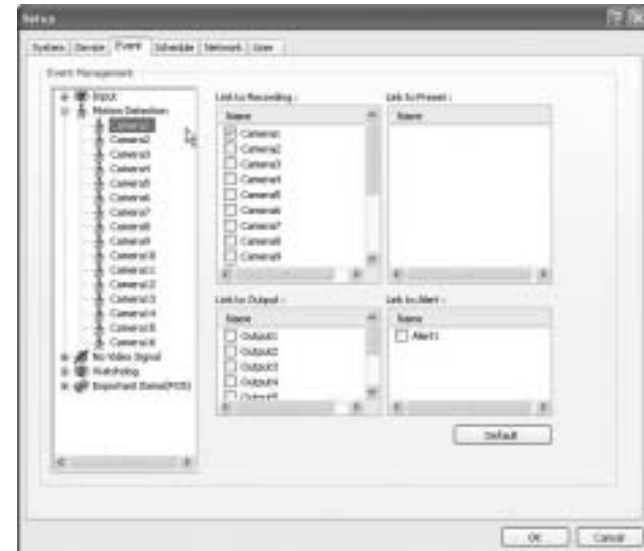
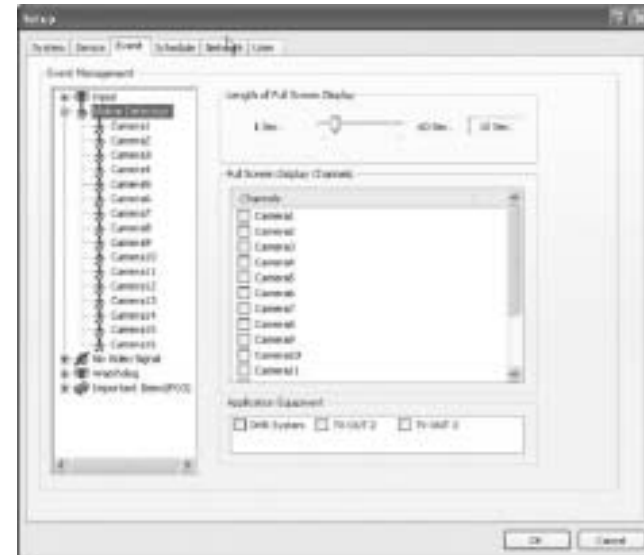
One Input device can have as many as 8 activating output devices on activation.
The above example shows that Output1 will be activated in the case of Input1 activation.

Link to Alert:

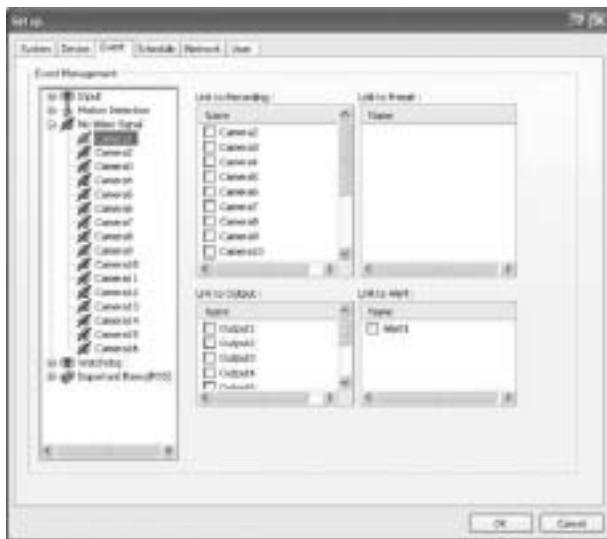
Input device can also be linked to alert.

Motion Detection

The same identical concepts and methods as “Input” are applied to the “Motion Detection”.



No Video Signal

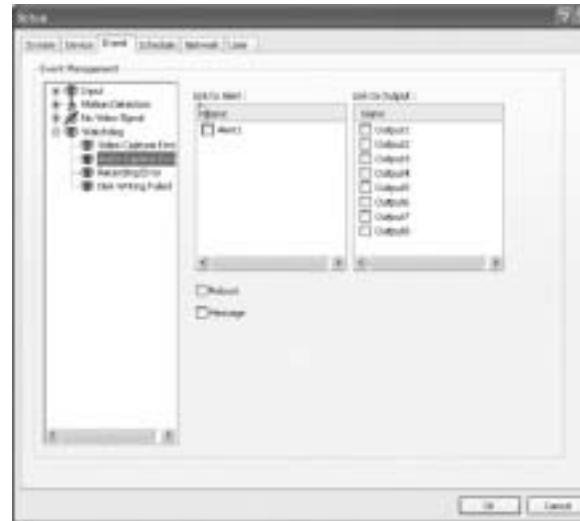


The same identical concepts and methods as "Input" are applied to "No Video Signal".

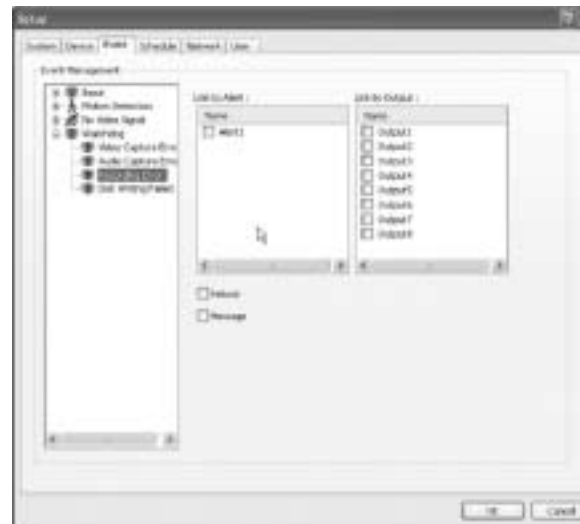
Watchdog



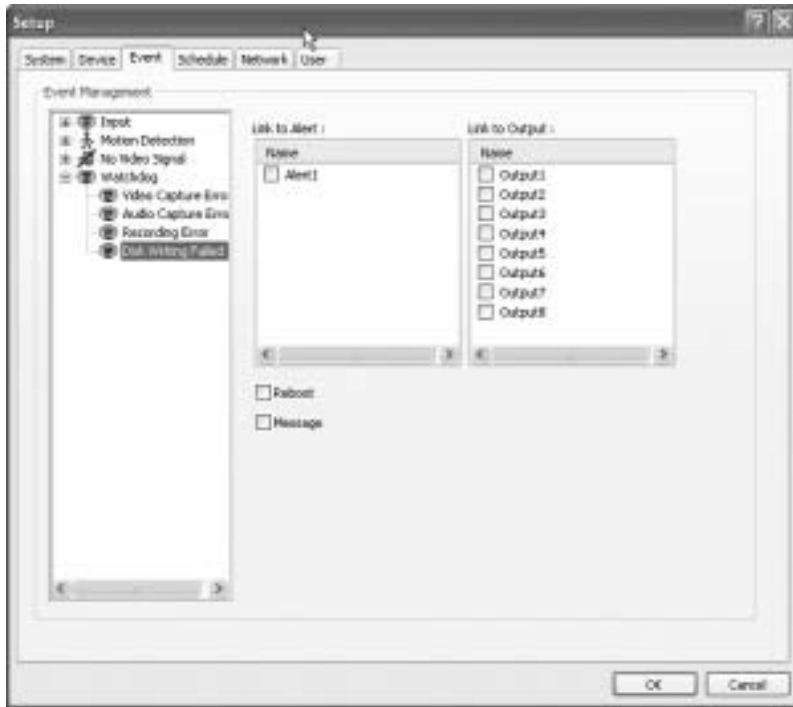
The same identical concepts and methods as "Input" are applied to "Watchdog". When "Video Capture Error" is occurred, it is linking to Alert and Output. User can link the event to Reboot, Message on DVR.



The same identical concepts and methods as "Input" are applied to "Audio Capture Error". When "Audio Capture Error" is occurred, it is linking to Alert and Output. User can link the event to Reboot, Message on DVR.



The same identical concepts and methods as "Input" are applied to "Recording Error". When "Recording Error" is occurred, it is linking to Alert and Output. User can link the event to Reboot, Message on DVR.

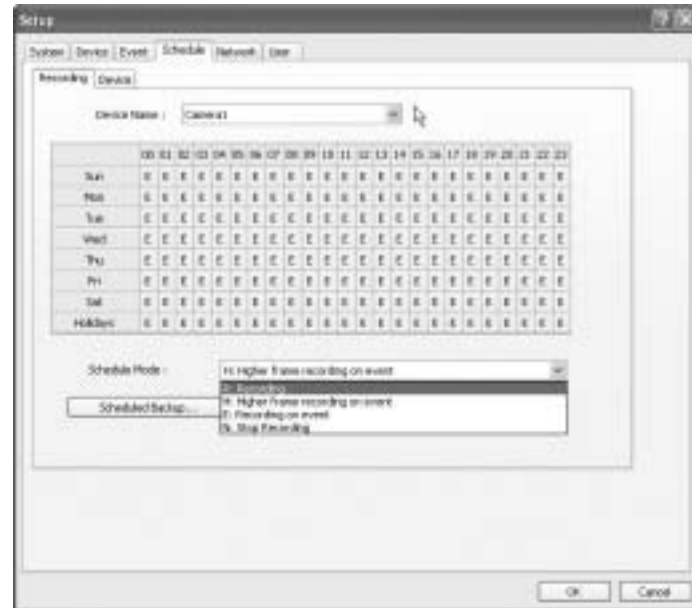


The same identical concepts and methods as “Input” are applied to “Disk Writing Failed”. When “Disk Writing Failed” is occurred, it is linking to Alert and Output. User can link the event to Reboot, Message on DVR.

(4) Schedule

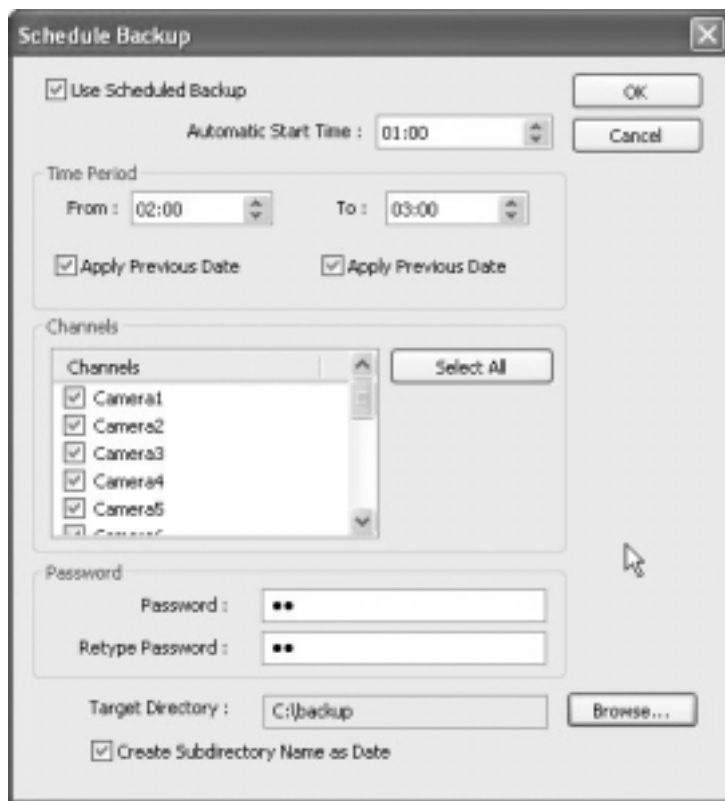
“Schedule” is a place where the different activities of different devices are determined.

Camera



Each camera can have different recording options; scheduled recording by time & day and selective recording.

- R:** Recording at all times
- E:** Recording on event
- N:** Stop recording
- H:** Recording at all times and higher frame recording on event



Use Scheduled Backup: To set backup automatically.

Please refer to above example.

Automatic Start Time: At 1 a.m. it automatically starts back up.

Time Period

From: When “Apply Previous Date” is checked, 2 a.m. means yesterday.

If not, it is coming 2 a. m.

To: Same concept as “From”.

Channel: Cameras wish to backup.

Select All: Select all cameras

Password: Give password to play back backup data.

Retype Password: Retype password to double confirm.

Target Directory: Selects directory to backup.

Create Subdirectory Name as Date: Gives created directory name based on the date.



The holiday recording schedule set at the bottom of the “Schedule” table will be applied to selected dates.

Manual (Instant) Recording

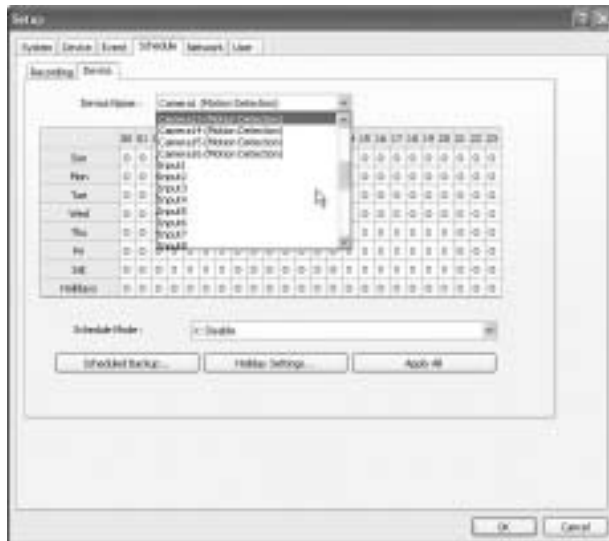
It is a function that enables users to react on an emergency situation properly by making MagicRadar start recording immediately.



1. The purple icon indicates that it is on “Manual Recording”.
2. Only ‘Admin’ can use “Manual recording”.

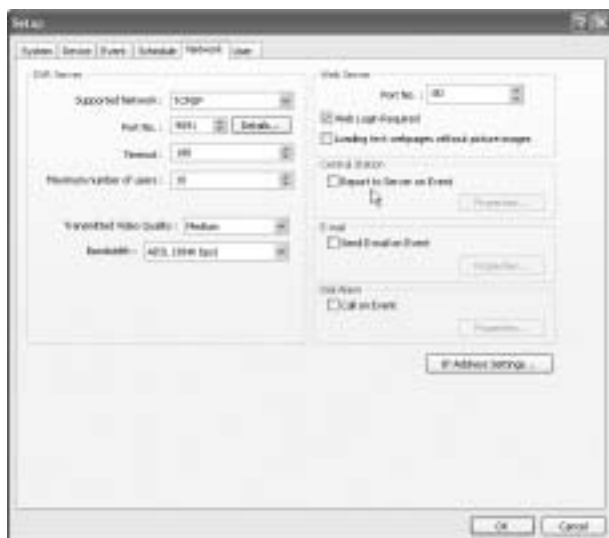
Start “Manual Recording” by selecting “Recording On”. Stop “Manual Recording” by selecting “Recording Off”

Device

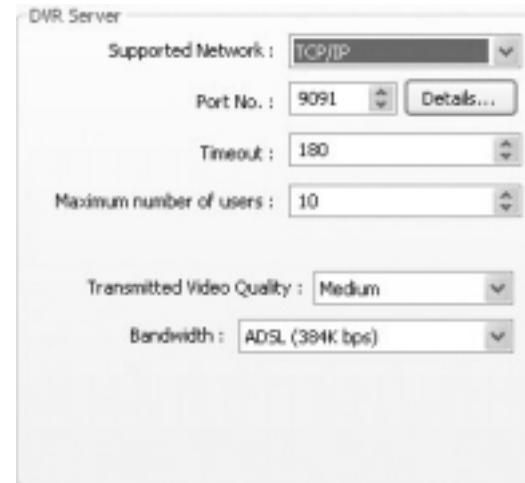


Select detailed schedule for activating sensor and alarm individually.

(5) Network



DVR Server



Supported Network:

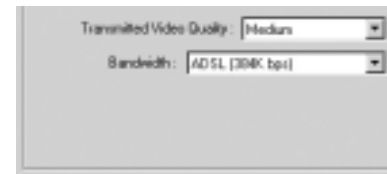
1. TCP/IP - Connecting to DVR Server from Client using Lan or DSL
2. PSTN - Connecting to DVR Server from Client using PSTN or ISDN modem
3. Not In Use - Not allowed to connect to DVR Server remotely

Port No.: The default port number is 9091.

Timeout: The time length of trials to connect to DVR Server from Client

Maximum Number of Users: The maximum number of users that can be logged in remotely.

Details: It shows all the port numbers that are available to use.



Transmitted Video Quality:

Video quality to be transmitted to Client. As a reminder, the higher video quality gets, the slower network transmission speed becomes. Therefore, it is often recommended to select low video quality when using "Narrowband".

Bandwidth:

Make sure to select the right bandwidth to have the right network performance.

Note:

MagicRadar will automatically appoint a proper IP address to router. No router setup is required.

Web Server



Port No.: Fixed HTTP Port No.

Web Login Required:

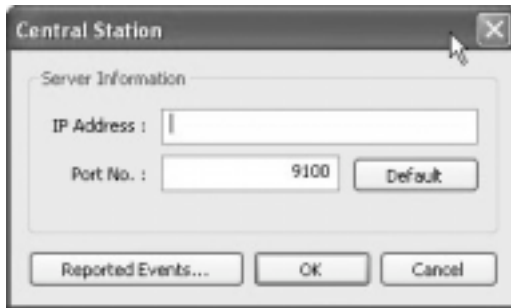
If the box is checked, login is required when connecting DVR server using web browser. If the box is NOT checked, automatic login as “anonymous” will be done. Loading text webpages without picture images: If the box is checked, it takes less time to download initial page of web browser. It downloads only text, not graphic user interface.

Central Station

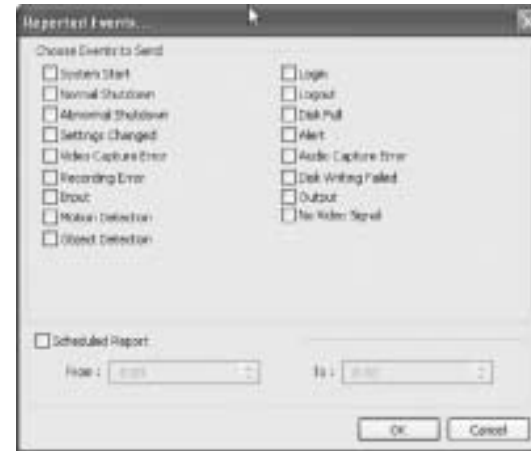


“Central Station” is a function that enables Client with static IP to manage multi DVR sites. Check the box and click on “Properties” for setup.

Note: “MDVR” must be installed on Central Station Server(Client). For more details, refer to Appendix 3.

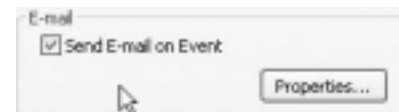


Type in the IP address of Central Station Server (Client with Static IP) and click on “Reported Events” for more setup.



Choose events to report to Central Station server and set reporting time period.

E-mail

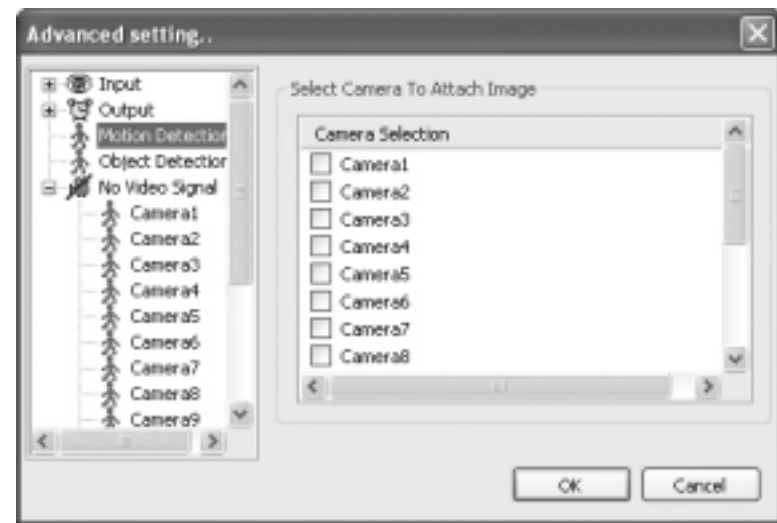
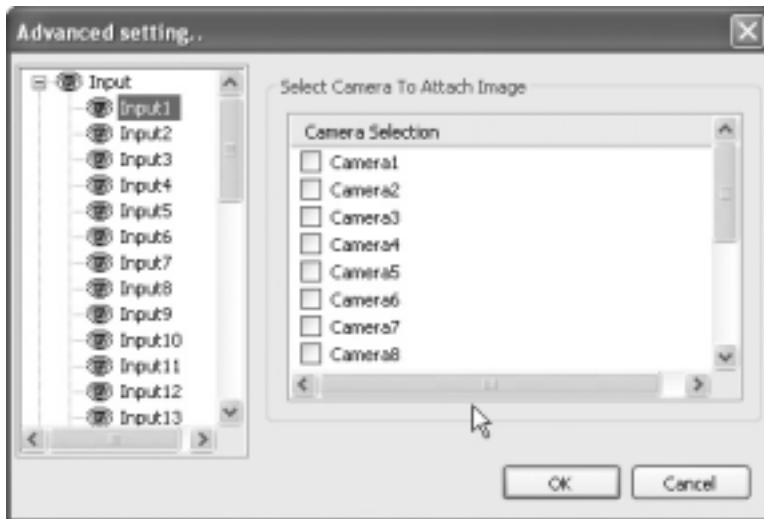
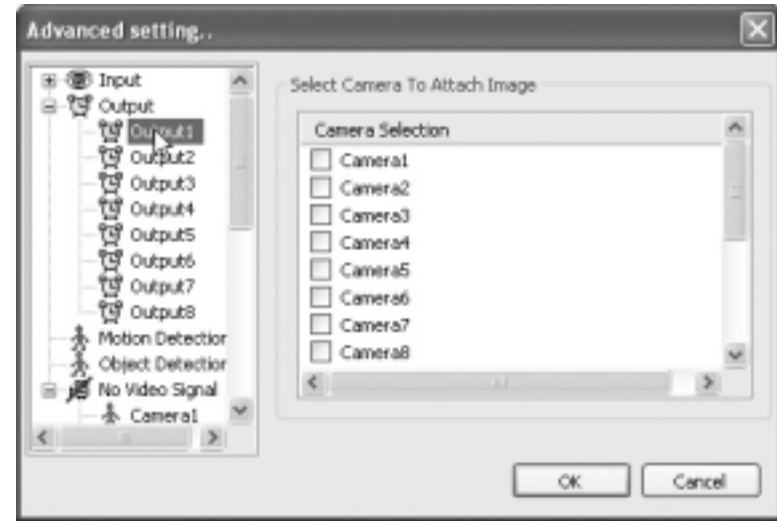


E-mail is a function that enables MagicRadar DVR system to send out e-mails when selected events occur. Check the box and click on “Properties” for setup.

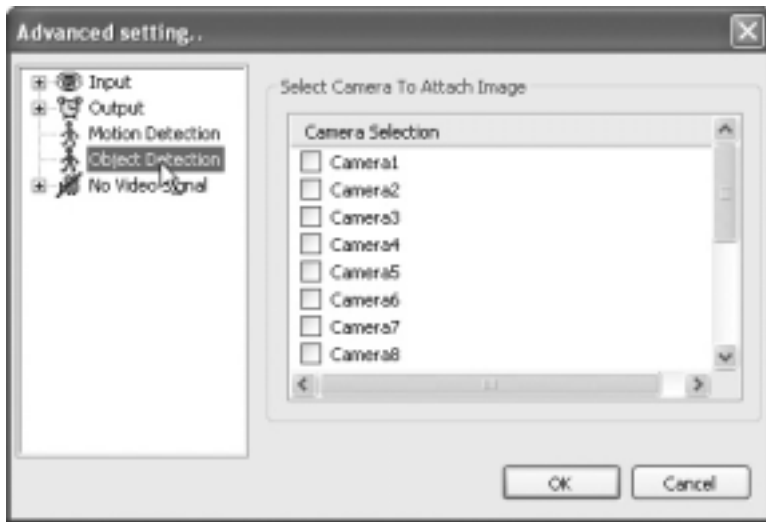


Note: Some e-mail servers may require authentication for ID and PW.

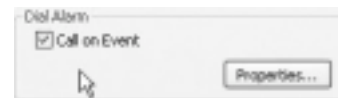
Make sure to put in the right IP address of SMTP server. Then, click on “Reported Events” for more setup. The “Reported Events” menu is the same as Central Station.



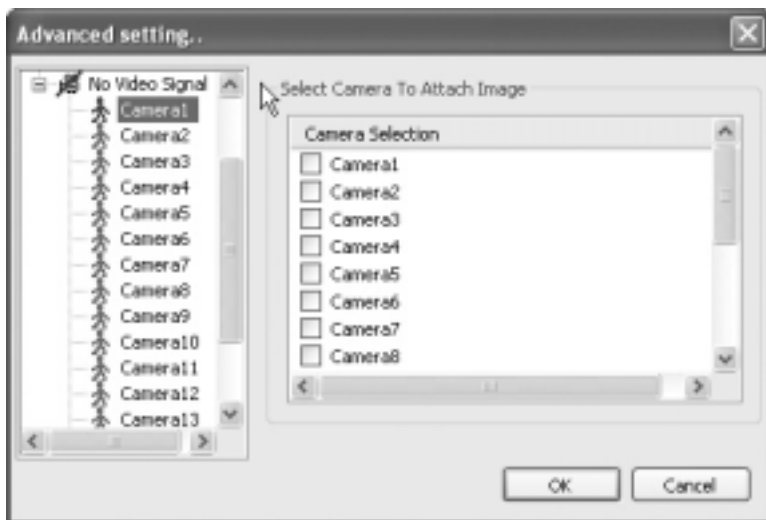
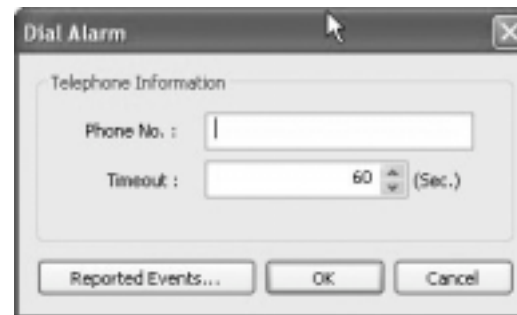
Send camera(s) to send out image(s) when the event occurs.



Dial Alarm



“Dial Alarm” is a function that enables MagicRadar DVR system to call out on selected events. Check the box and click on “Properties” for setup.

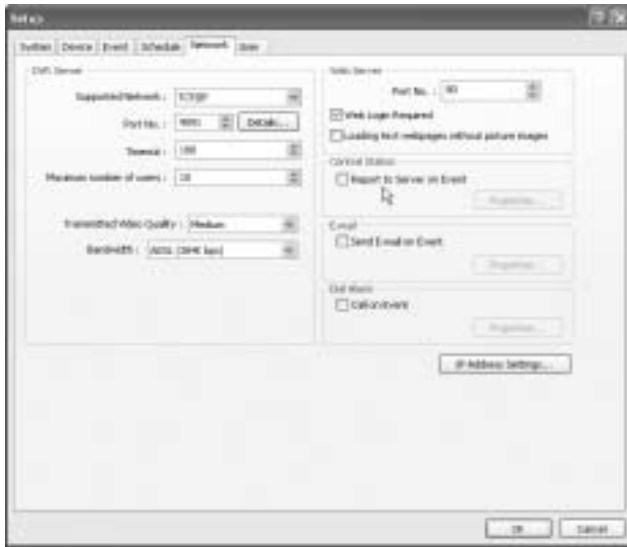


Modem card must be installed inside MagicRadar DVR system to make this function work. Type in phone (mobile) number to report. Click on “Reported Events” (same setup as Central Station) for more setup.

IP Address Setup

IP Address Settings...

Clicking "IP Address Setting" will open a window for Network Connections as below.

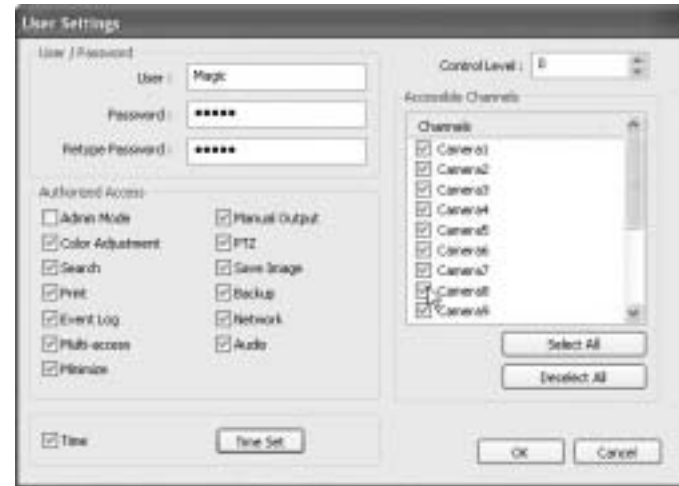


Click right mouse and select Properties for IP setup for MagicRadar DVR's network functions.

(6) User

Users can be added, deleted or modified with different authorized access and control levels.

There are no limits in the number of users created.



Authorized Access: Checked functions will be allowed to access remotely.

Accessible Channels: Checked channels will be allowed to view remotely.

Control Level: The lowest number will be allowed to have the first priority to set up, control, etc remotely.

Admin Mode: A user who can go into the setup and program (given the same authorization as "Admin"). Only ONE user with "Admin Mode" can log in remotely.

Network: If checked, remote access authorization will be given.

Multi-access: If checked, multi-users with the same user name can log in remotely at the same time.

Minimize: An authority that can minimize S/W.

Time Set:

It's a function that enables Administrator to set time for certain users to log in only for the time allowed

Digital Video Surveillance System - MagicRadar

View Log Application

- > Screen Features
 - Event Log



1. Screen Features

Recording Camera: It shows recording status.

Sensor Detection: It shows sensor detection status.

Motion Detection: It shows motion detection status.

Alarm: It shows alarm activation status.

HDD Capacity: It shows HDD capacity used for recording.

Event: It shows events occurred.

Event Log: It shows all the previous events occurred by date.

(1) Event Log



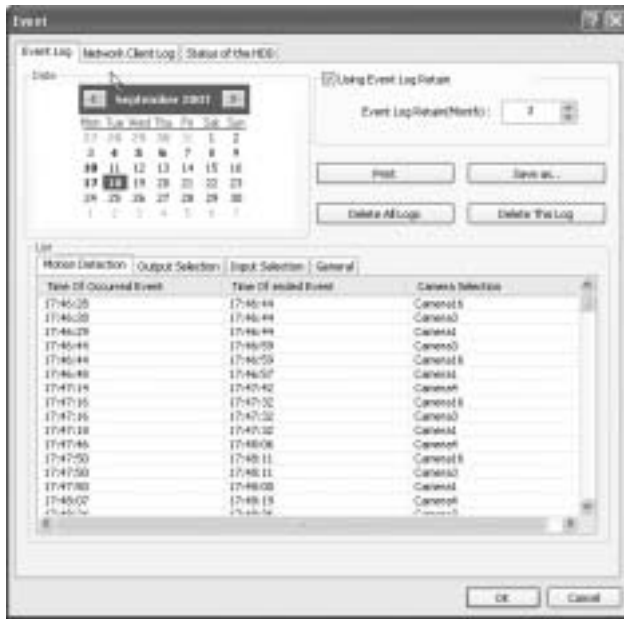
Event search is classified by motion detection, output, input and general.

Event occurred time and ended time by camera are displayed simply on the table.

Printing, saving of saved event list and managing the list are available in the 'Event Search' menu. Checking access network

user and its time is available. It is also possible to check HDD health.

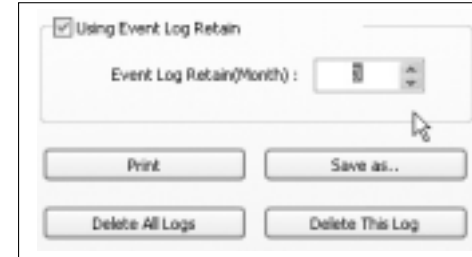
Motion Detection



Motion Detection: Occurred and ended time of motion detection event are displayed on the table prominently with camera info.

Caution

1. Remote client software and server version needs to be the same as 5.2.0.0. There is a problem in compatability with server if client version is not 5.2.0.0. Upgrading client software to 5.2.0.0 is highly recommended.
2. Log saved separately to manage 'Event Log' efficiently. Viewer program is required to maintain 'Event Log'.



Using Event Log Retain: Event log can be saved into DVR automatically from 1 to 12 months and its default setting is 3 months. It is to avoid overloading of event log.

Example: If it sets 3 months and it is 20th of August today.

It deletes data before 20th of May.

Date: All dates with events will be marked in bold numbers.

List: All events for a certain selected date will be shown.

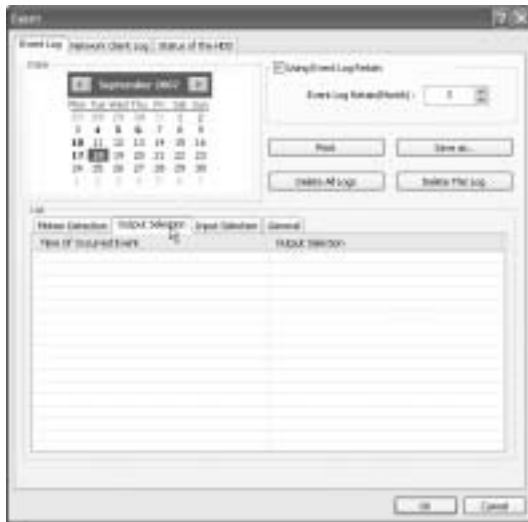
Delete All Logs: If clicked, all the previous records will be deleted.

Delete This Log: If clicked, only the events for a certain selected date will be deleted.

Print: Print the event log of a selected date.

Save as: Save an event log of selected date with text file.

Output Selection



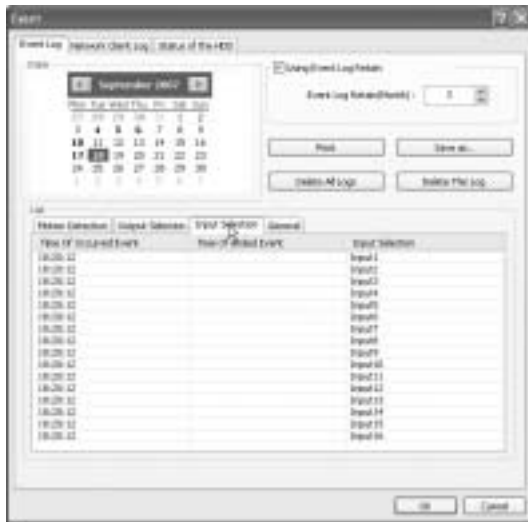
Output Selection: Occurred time of event from output device is displayed on the table prominently with output device info.

General



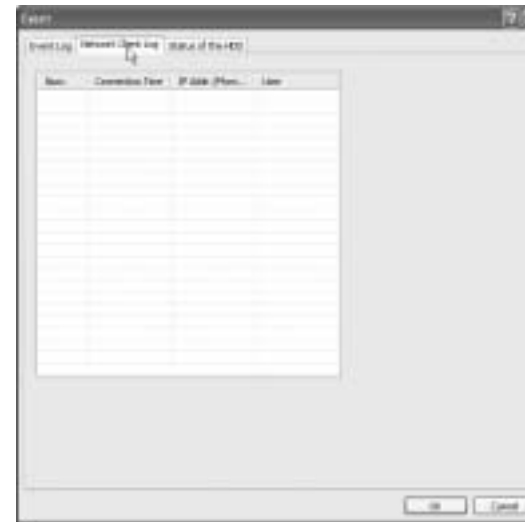
General: Occurred time of events from all connected devices are displayed on the table prominently with each device info.

Input Selection



Input Selection: Occurred time of event from input device is displayed on the table prominently with input device info.

(2) Network Client Log



Network Client Log: Remote login records will be also kept on DVR server. Checking accessed network user, connected time and IP address are available.

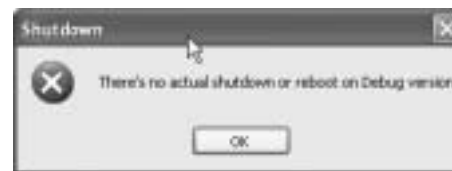
(3) Status of the HDD

Every 5 hour DVR checks the status of HDD and shows its condition with different colors.

Green: okay **Yellow:** Faulty is going on. **Red:** Completely fault.



If HDD is completely fault, POPUP menu as above will be shown. It rests till the system shuts down, and it shuts down below message will be appeared.



Playback Application

Digital Video Surveillance System - MagicRadar

> Search Features 1

> Search Features 2

- Playback**
- Event/Object/Text/People Count Search**
- Monitoring & Searching**
- Bookmark & Go To**
- Save**
- Print**
- Backup**



1. Search Features 1

Calendar: All dates with recorded data will be marked in bold numbers.

Blur/Sharp/Normal: Buttons to adjust sharpness of image

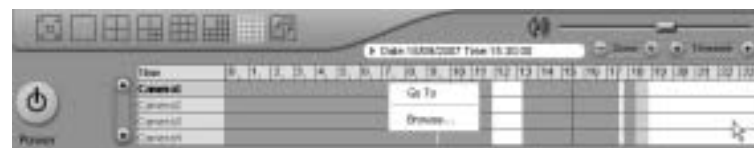
Zoom: Buttons to zoom in/out

Brightness: Buttons to adjust brightness

Contrast: Buttons to adjust contrast

Default: Default for Zoom/Brightness/Contrast

2. Search Features 2



Clicking right mouse on Time bar for Browse... and select a folder containing backup data.

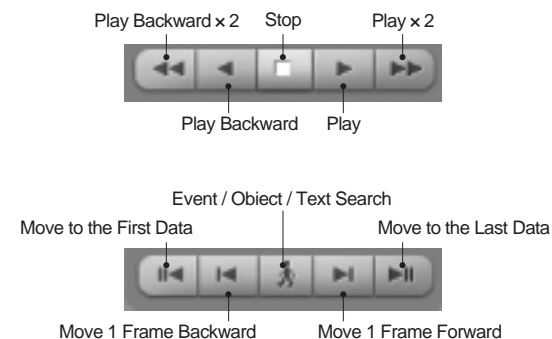
(1) Playback

For playback, simply select date, screen mode (1, 4, 9, 16, etc.), time by one click on the

time bar and click the play button.

What different colors mean on the time bar:

1. Blue: Recorded data by sensor & motion detection
2. Purple: Recorded data by 24-hour-recording
3. White: No recorded data in all cameras
4. Gray: No recorded data for some cameras
5. Green: Blue + audio
6. Light Green: Purple + audio
7. Dark Red : Purple + recorded text data (POS)
8. Orange : Even- recorded data with recorded text data.
9. Dark Yellow : Event-recorded data + recorded text data + audio
10. Yellow : Purple + recorded text data + audio

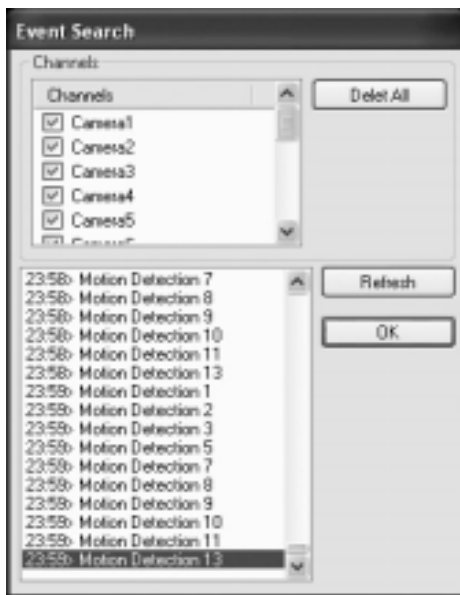


(2) Event / Object / Text / People Count Search

[Event Search]



Click the Event / Object / Text / People Count / Access Control Search button and select "Event".

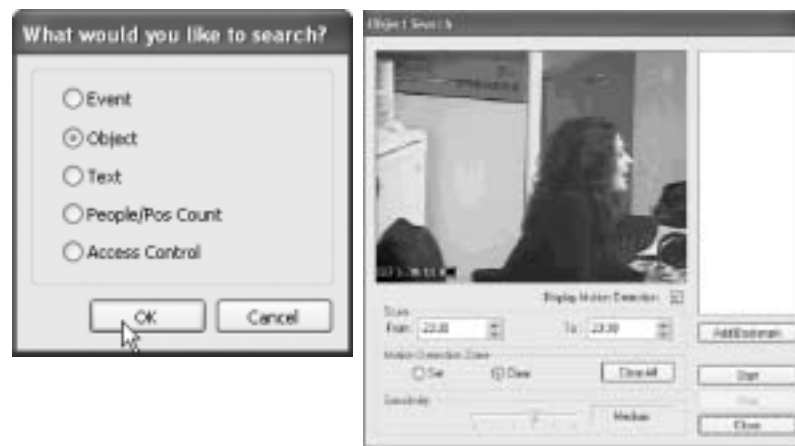


Select channels for Event Search.

Select one event from the event list and click "OK", and the selected event will be displayed.

Click "Refresh" to update the list.

[Object Search]



Object Search is only to search certain selected objects for a certain period of time.

Scan: Set the time period for object search.

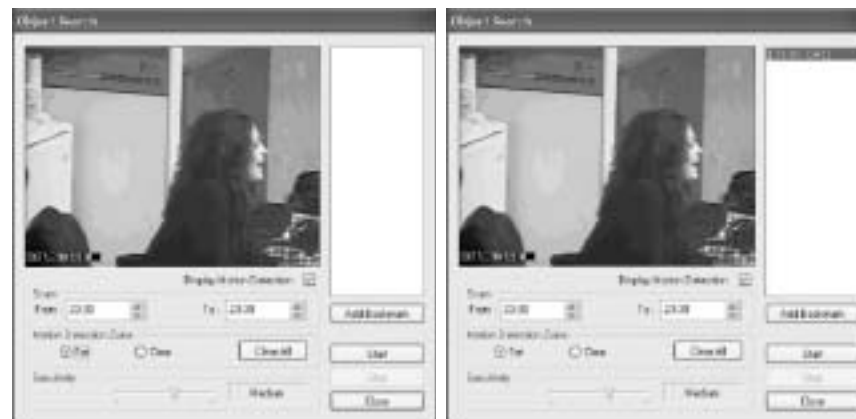
Motion Detection Zone: Select "Set" and mark areas for object search by dragging mouse.

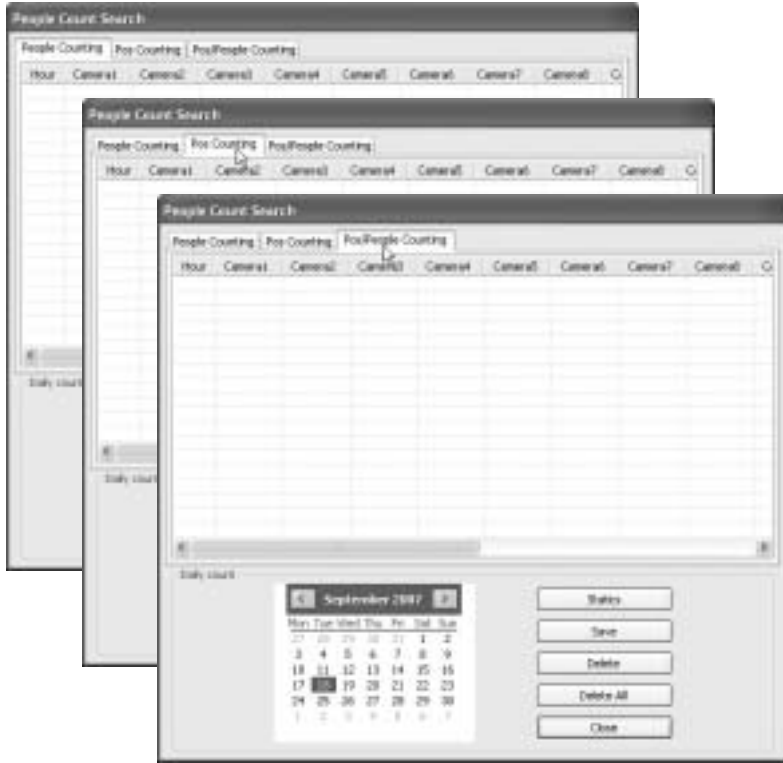
"Clear" is used to erase certain areas inside motion detection zones.

Sensitivity: It means "Motion Detection Sensitivity".

Display Motion Detection: If checked, green motion detection blocks will be displayed.

Clear All: Click on it to clear all the motion detection zones set.





People Count Search

1. **People Counting:**
It shows counted [e]ople number in certain zones by Hour Cameras on the table.
2. **POS counting:**
Counting it shows received POS data number in DVR by Hou and Cameras on the table.
3. **POS/People Counting:**
It shows both counted People and received POS data number on the table.
4. **Delete/Delete All:**
To erase data in statistics



Statistics

1. **Camera/Hour:** Select camera and hour wish to search
2. **Start/End:** Select date wish to search
3. **Camera All/Hour All:** Click it to select all cameras and hour.
4. **Total Transaction:** Results after searching searching transaction count in total
5. **Total Count:** Results after searching people count in total
6. **Search:** Click it to start search
7. **Close:** Click it to close the menu.



Save

1. **Select:** Select menu wish to save.
2. **Time Period:** Select date wish to save.



How to read data and graph

1. Counted number of (T)ransaction/ Counted number of (P)eople count

2. 

Red Color: Rate of people count

Green Color: Rate of Transaction

The Pie Graph will show at a glance how many transactions have been performed, compared to the number of people counted.

(3) Monitoring & Searching

It is a feature that enables user to view live video while searching recorded data.

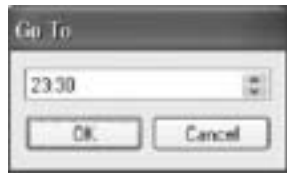


Click the right mouse and select "Monitoring On" to view live video. Click the right mouse again and select "Monitoring Off" to go back to "Search Mode".

(4) Bookmark & Go To



Bookmark (Favorites):
Added data from "Object Search" are stored here.



Go To:
Select desired time to search and click "OK".

(5) Save



Watermark(Image)
Using Watermark(Image): To attach a certain logo or special picture on AVI file.

AVI: For saving motion pictures and audio

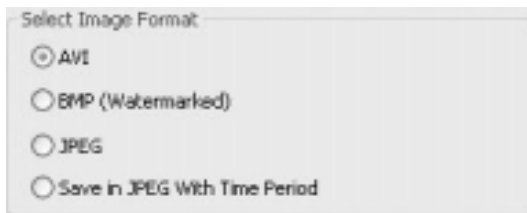
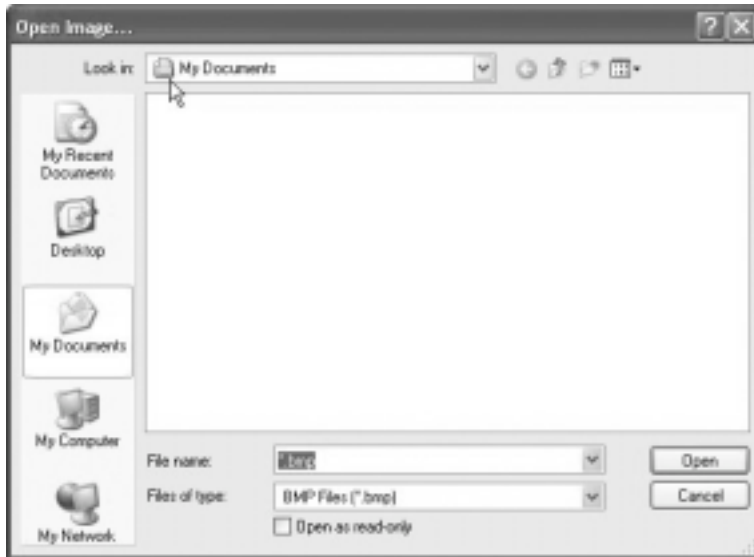
BMP: For saving images. Watermarked images can be saved.

JPEG: For saving regular still images. Quality is not as good as BMP but less HDD is used.

Save in JPEG with Time Period: For scheduled save in JPEG



- Watermark Setting
Select each for desirable watermark setting.



Click on "Browse" to find watermark image or logo.

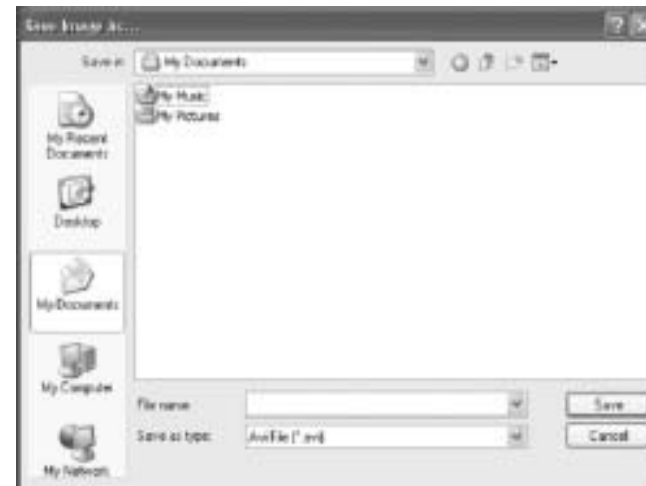
[Save in AVI Format]



Click "Start" to start saving and "Stop" to stop saving.

Mute:
Saving video only (no audio)

High Speed:
Saving in high speed Click time period settings and put the time period that you want to save.



[Save in BMP Format]

[Save in BMP Format]

Click "Start" and select "BMP" as you save images. Saved images can be checked using "Watermark Proofer".

[Watermark Proofer]



Execute "Watermark Proofer" and check if certain saved images are forged or not.



[Save in JPEG Format] ➤ Click "Start" and select "JPEG" as you save images.

[Save in JPEG with Time Period] ➤ Select time period and select channels to be saved in JPEG.

(6) Print



Click the "Print" button and follow the same printing procedure as you would normally print out documents.

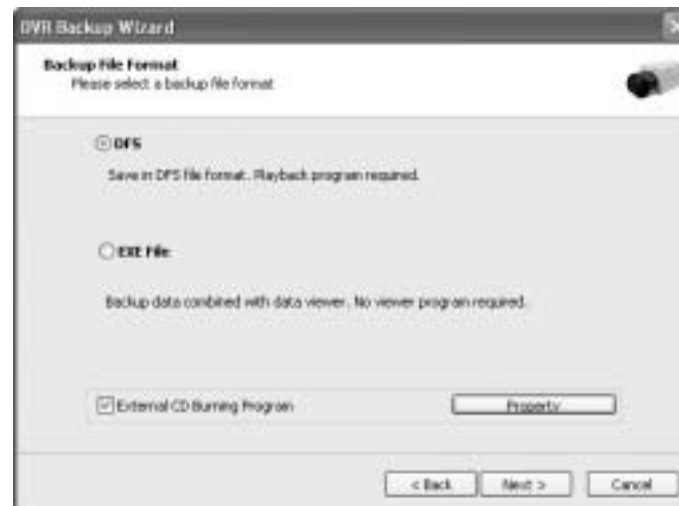
(7) Backup

The recorded data can be copied from the hard disk to external storage devices, such as CD-RW and DVD-RW.



Back up recorded data using various backup devices.

[DFS Back up]



DFS: Save in DFS file format.

Dialog: Show the directory of burning software (ex.Nero Burning)

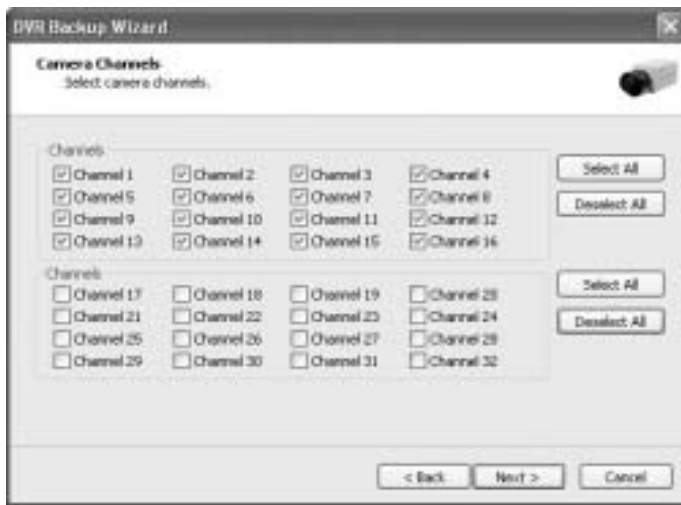
External CD Burning Program: User can run the other CD burning program such as Nero burning.

After successfully back up the file, user can burn the data onto CD.



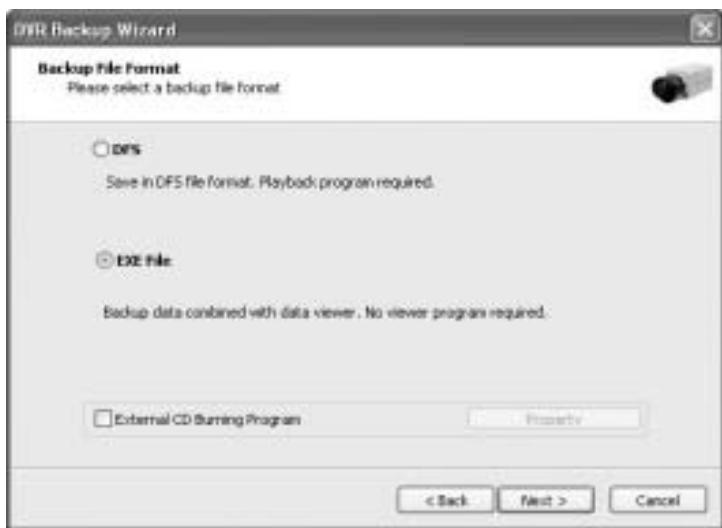


Select Time period: Specify time period for backup. The minimum period for backup is 1 minute. If password is set, viewing backup data will be possible only when it is typed in.
Backup Folder: Click the “Browse” button, select a drive to back up and enter a desired folder name.



Play CD-Burning: Check to burn the backup data through an external Burning program.
Log File: Shows “Backup Start Time”, “Directory”, “Status-fail or Success”.

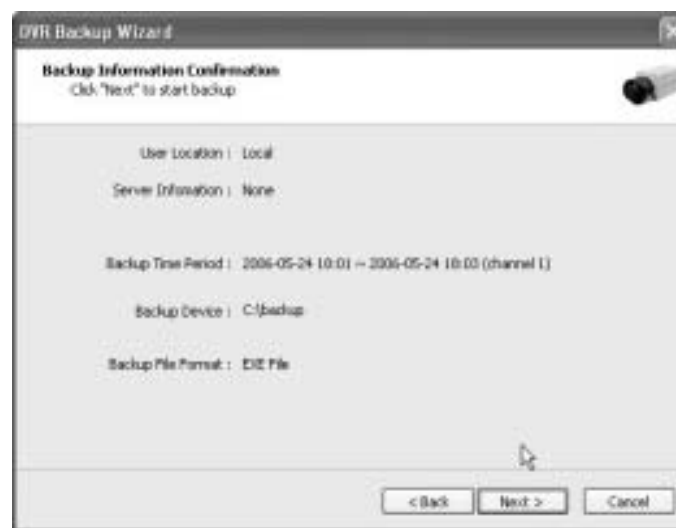
[EXE Back up]



Any recorded data can be saved as “.exe” file. No viewer program is required to see saved data.

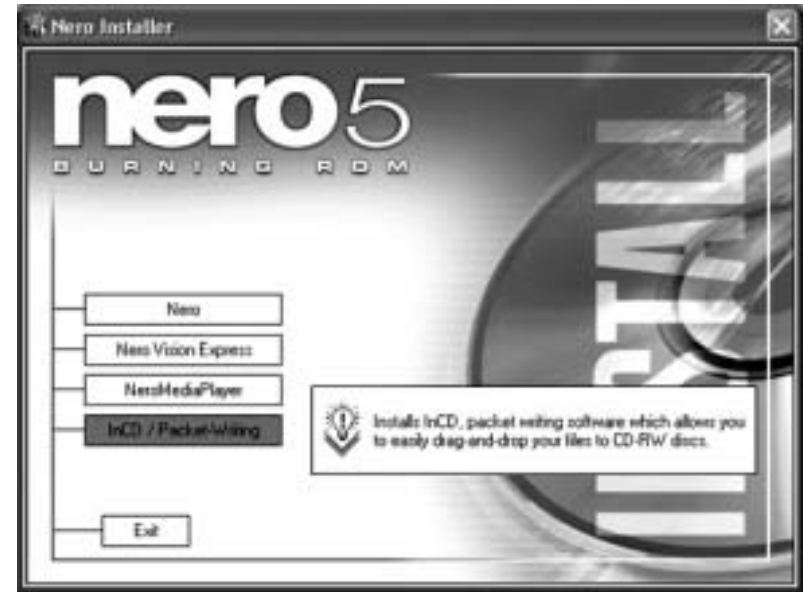
- Note :
1. file size limited up to 1 GB.
 2. 1 channel backup only.

1. Select “EXE File”.
2. Specify time period, password, drive, etc.
3. Select ONE channel to back up.
4. Specify file size up to ONE GB. If it is larger than 1GB, multiple exe files will be created.
5. Tick the “Once Make EXE File” box to create only one file with the file size specified.
6. Double-click the exe file created to see data.

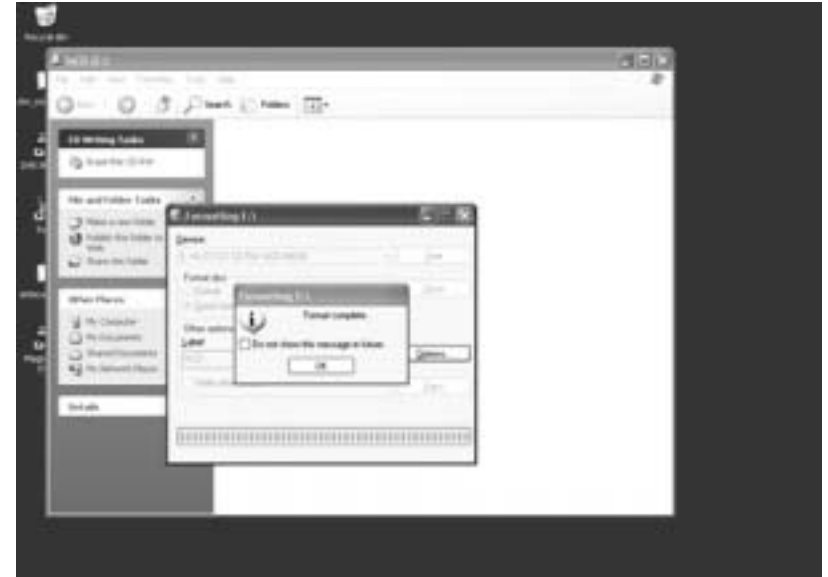
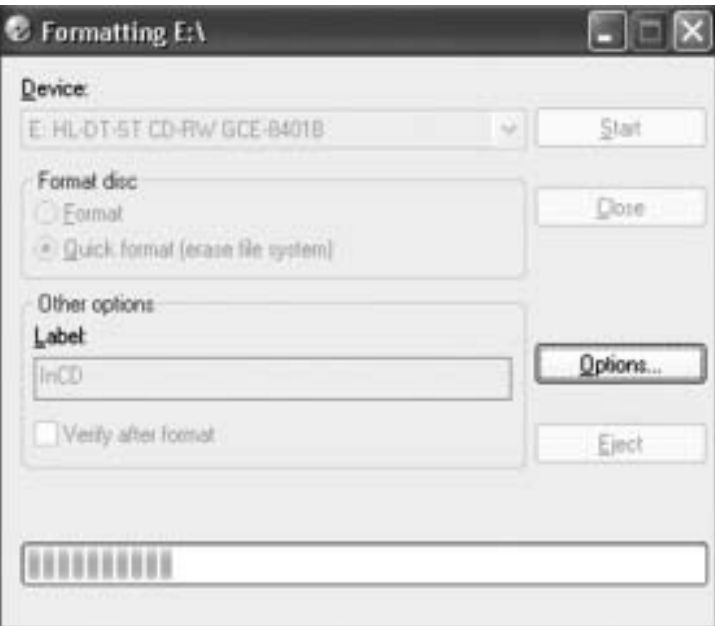
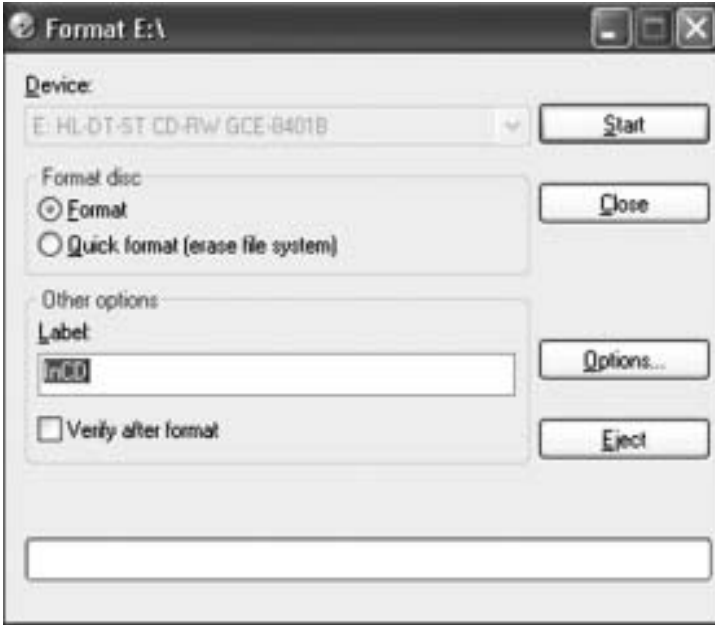




[Run CD Burner (For Non Windows XP Users)]

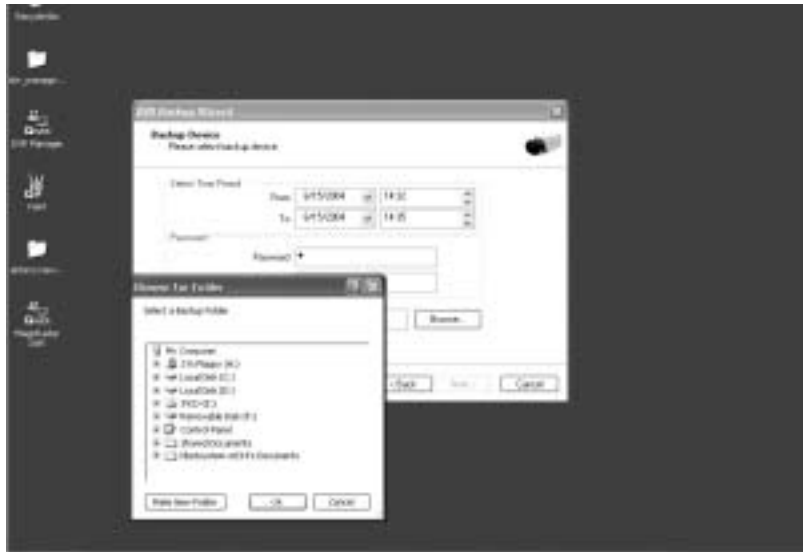


1. Install bundle CD and install InCD.
3. After installing INCD, run "InCDL.exe" which is the InCD Launch Program.
4. Insert a blank RW CD and then start formatting it (If it is a brand-new one, click "Format" instead of "Quick Format").



5. Leave the MagicRadar Program and insert the blank RW CD which has been formatted.
6. Select "Backup" and click "Next" to start.
7. Select time period & password and click "Browse" to create a folder.





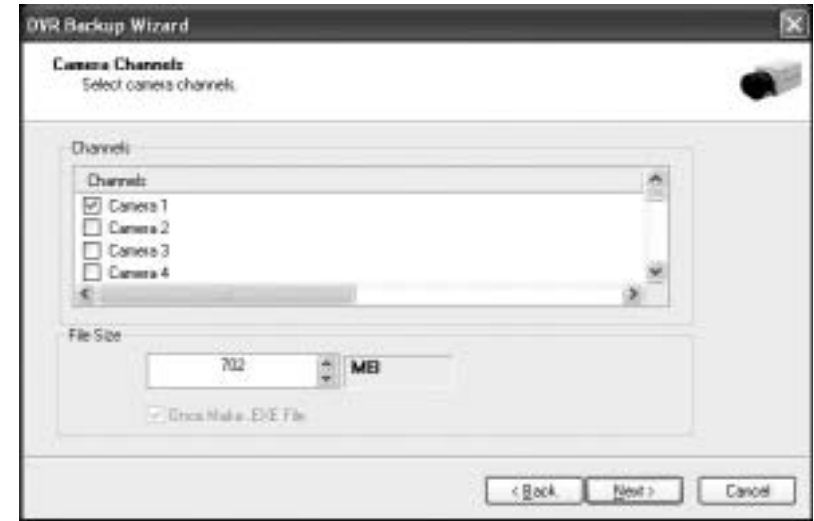
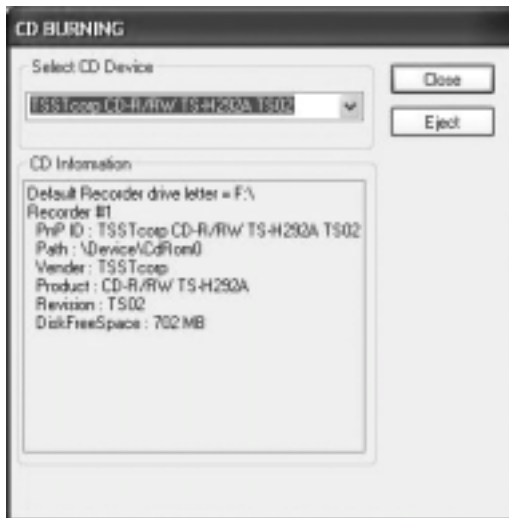
[Run CD Burner (For WindowsXP Users Only)]



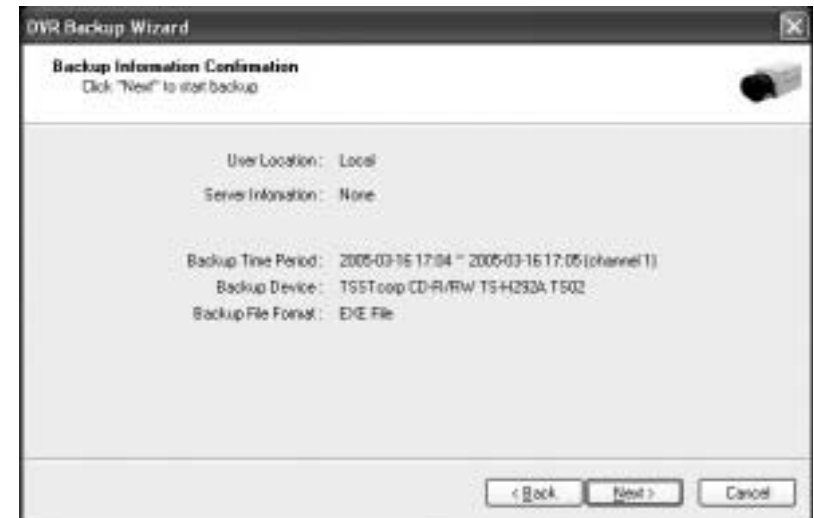
Windows XP users can back up data directly in a CD without exiting the MagicRadar Program.
 1. Tick the "Save in CD data of backup" box and click "Next".



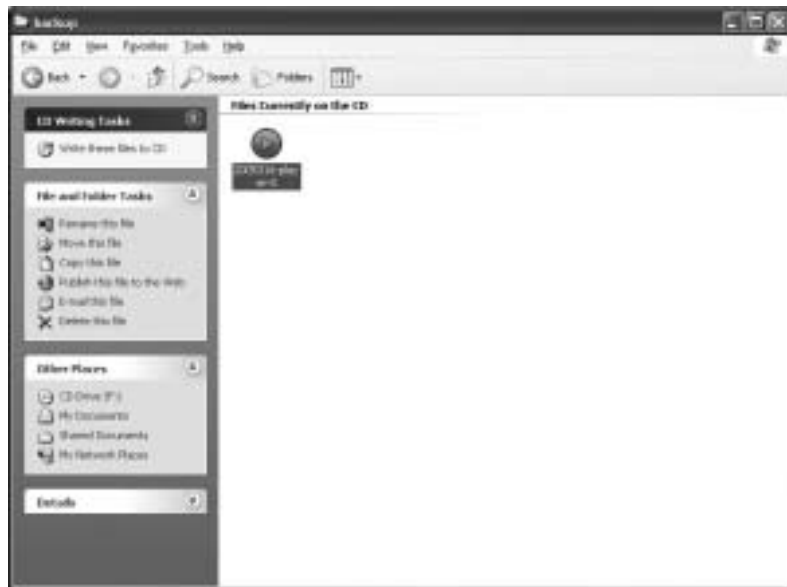
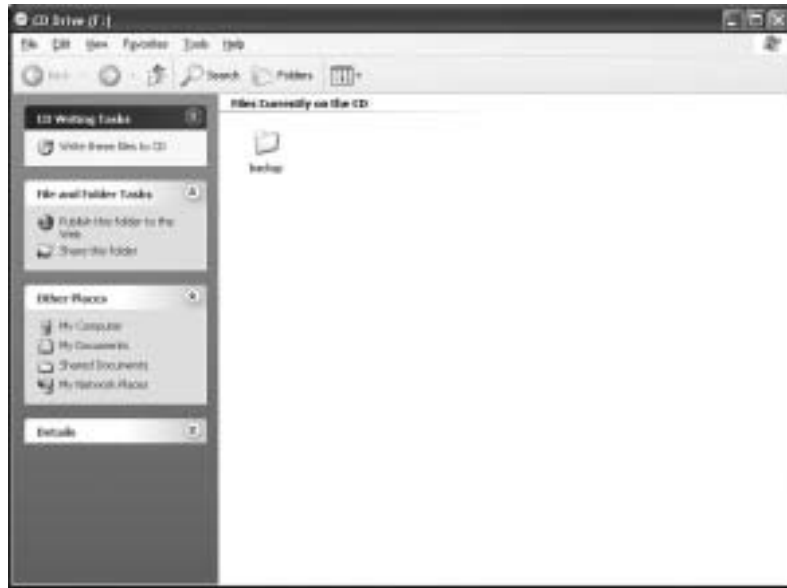
2. Select Time Period : Specify time period and password.
3. Select CD-RW drive.
4. Create folder name if it should be used and click "Next".
5. CD information will be shown as below.



6. Select 1 channel to back up.
7. Identify the maximum file size indicated. An attempt to back up more than the size indicated will result in a failure.

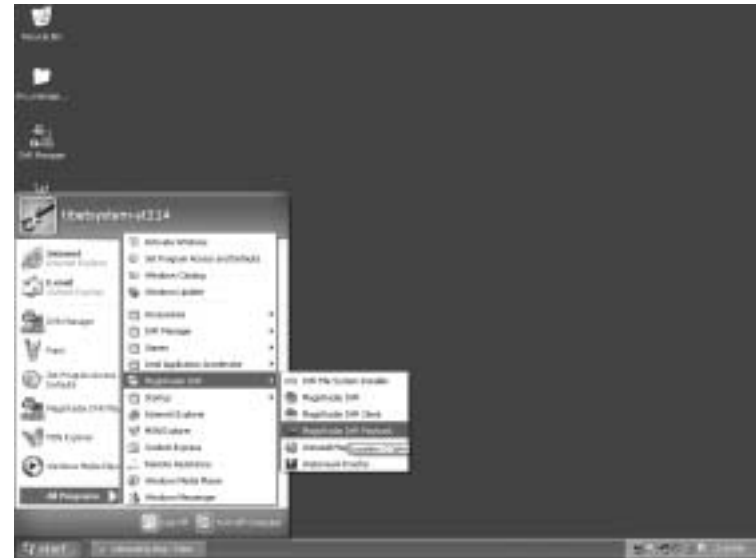


8. After completing back up, find the files created in the CD.



[Playback]

1. Click the "Start" button and run the "DVR's Playback Program".
2. Select a folder (subfolder) to see saved data.



Digital Video Surveillance System - MagicRadar

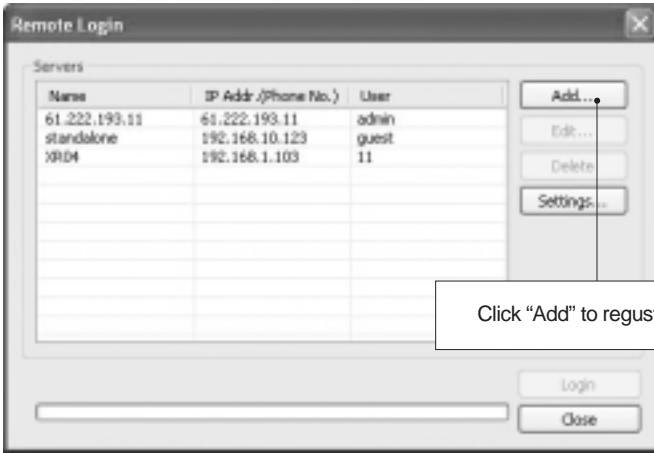
Remote Monitoring System

- > Program Execution
- > Remote Save and Backup
- > Real Time Audio

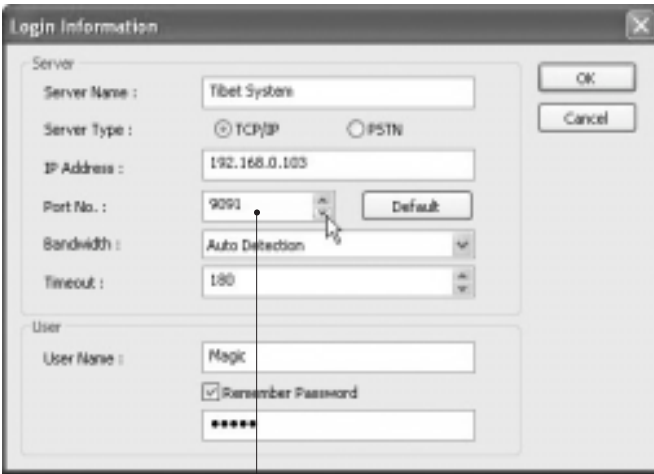
1. Program Execution



Double-click on the “MagicRadar DVR Client” icon on the desktop to execute Remote Monitoring System (Client).



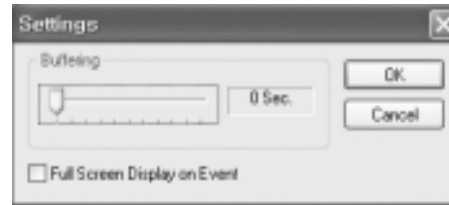
Click “Add” to register DVR server.



Note: Make sure to put the same Port No. as DVR server.



There can be more than one DVR server registered. Select one from “Servers”, click on “Login” and type in password to log in.
Edit: Login info. changes can be made here.
Delete: Registered servers can be deleted with one click.



Full Screen Display on Event: If checked, full screen will be displayed on events.

2. Remote Save and Backup



The instant AVI file save of real time video can be done remotely.

1. Click the right mouse to start saving.
2. Click the right mouse to stop saving.

Remote Backup can also be done.

The same procedure is used as "DFS Backup".

3. Real Time Audio



Click the right mouse and select "Enable Audio" to hear real time audio.

Note: Changing "Setup" remotely can be done if remote user is "Admin" or "Admin Mode".

Digital Video Surveillance System - MagicRadar

I-phone

- > Installation**
- > Execution**
- > Audio Setup**

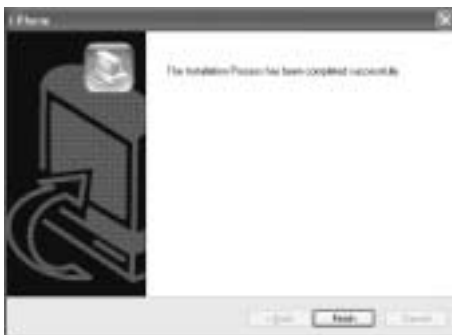
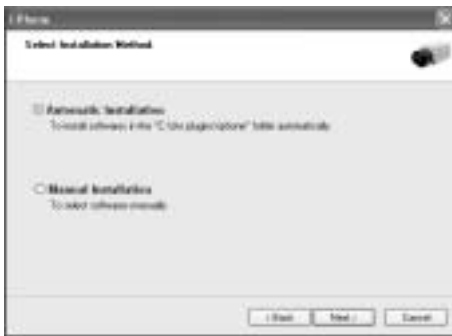
2-1. Installation



Any system used for “Two-way Communication” must have static IP and “iphone(1.0.1.0).exe” must be installed.
For I-phone installation, double-click on “iphone(1.0.1.0).exe”.



Click “Next” to start installation process and select “Automatic Installation”.



Click “Finish” to complete the process.

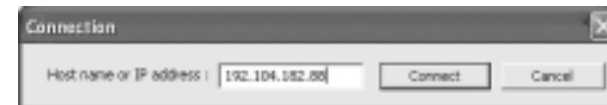
2.2 Execution



Go to “Start”, “All Programs”, find “I-phone” and select it for execution.



Find the I-phone icon at the right bottom and click it for the next step.

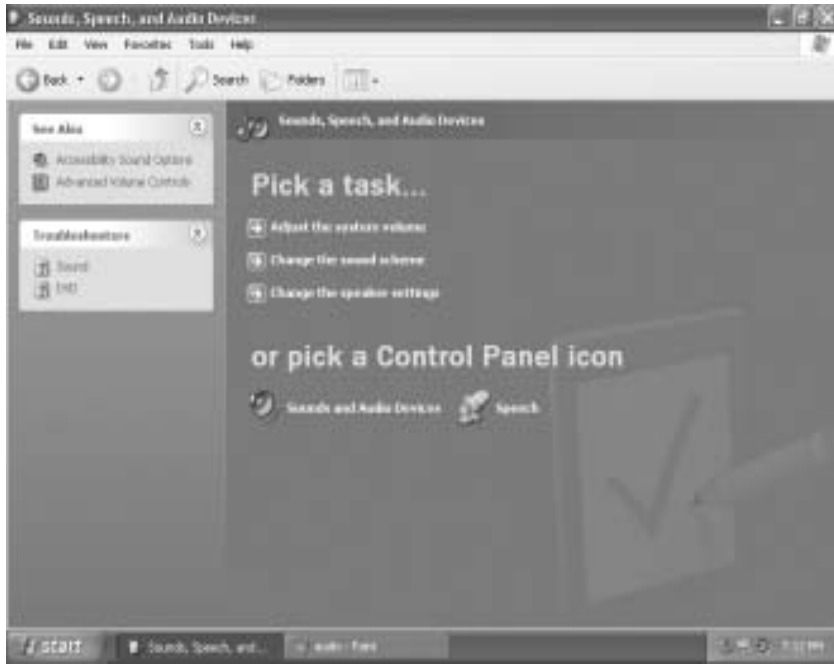


Select “Call” for Two-Way “Communication”, type in IP address and click “Connect”.



Property : The default port number is 8015 and the default timeout value is 5 seconds.
Leave them as they are unless other values must be used.

2.3 Audio Setup



Go to "Control Panel", "Sounds, Speech and Audio Devices" and "Sounds and Audio Devices". Then, go to "Audio", "Sound playback" and click "Volume".



Recording Control should be set up this way.