

# **i-Smart Viewer**

## **User's Manual**



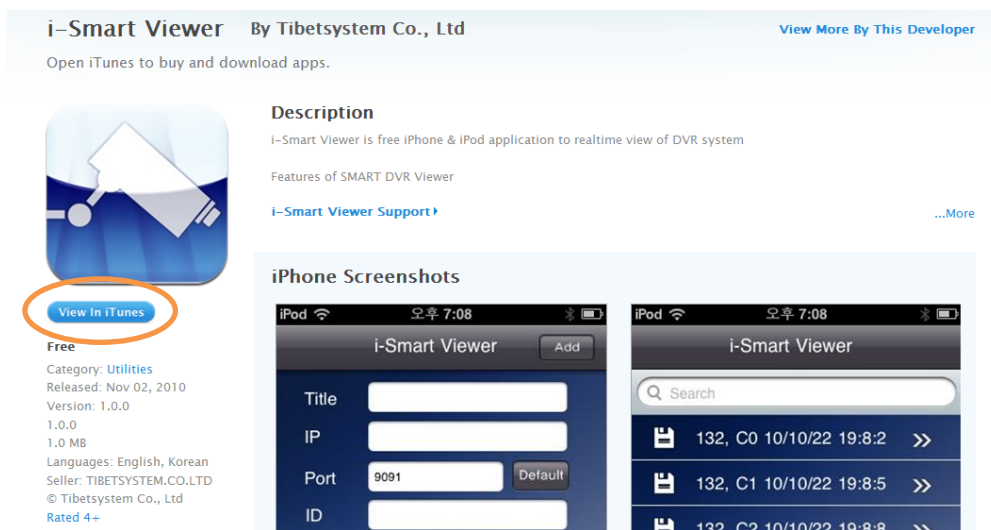
**I-PHONE / ANDROID / BLACKBERRY / SYMBIAN**  
**Compatible with HT / HX / DVS-9000 / DVS-DPS SERIES**

## iPhone / iPod

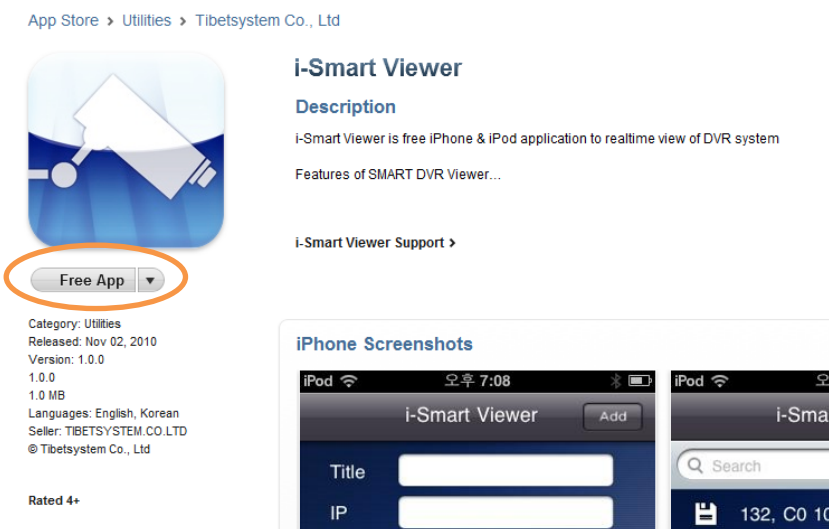
### Software Installation

#### Installing i-Smart Viewer through iTunes (PC/MAC)

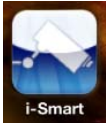
- 1) On the PC web browser,  
Visit <http://itunes.apple.com/app/i-smart-viewer/id399765847?mt=8>
- 2) You will see the web page below and click « **View in iTunes** »



- 3) Click “Free APP” to download App into your iTunes.



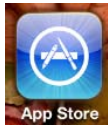
- 4) **Sync** iTunes and your iPhone / iPod to install i-Smart Viewer Application.



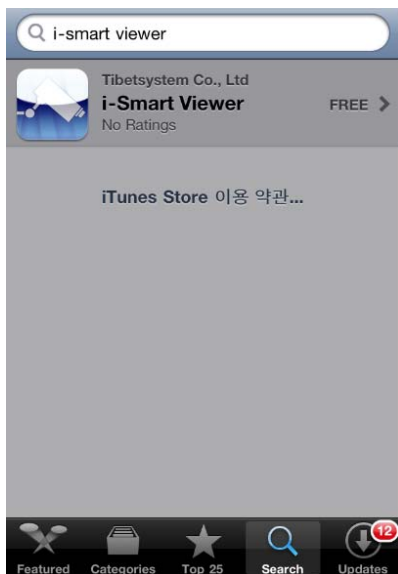
- 5) You will see **i-Smart icon** on the iPhone / iPod.

## Installing i-Smart Viewer through APP Store

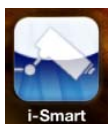
- 1) On the iPhone / iPod, run **APP Store** Application.



- 2) Touch "**Search**" and input "**i-Smart Viewer**" and select application as below.



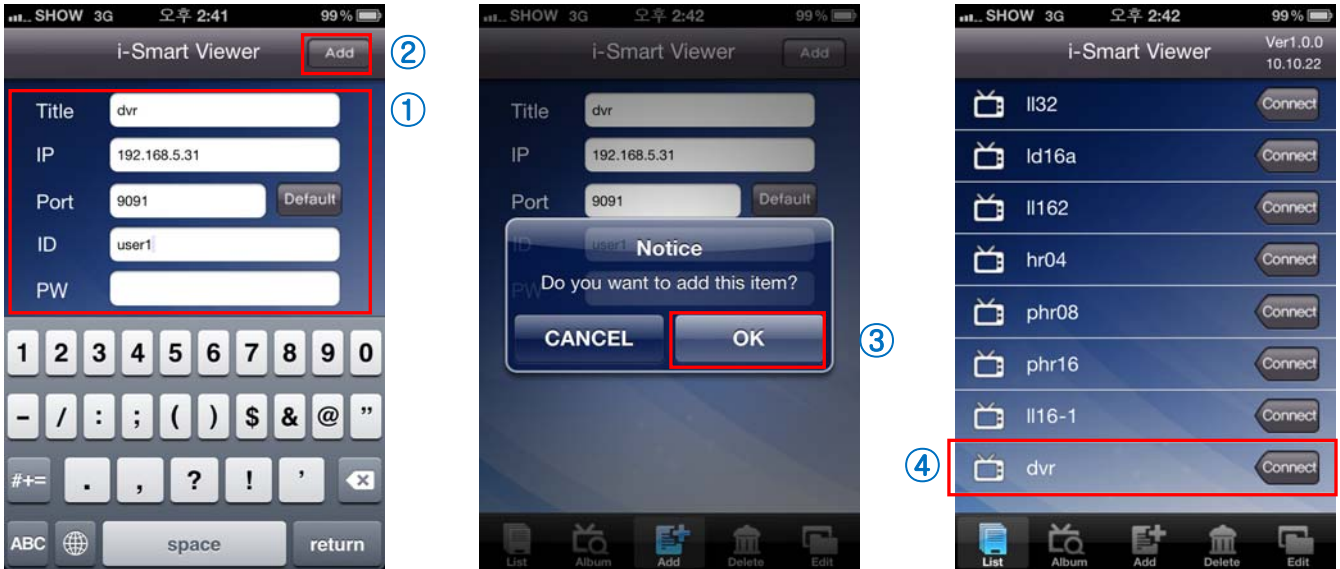
- 3) After installation, you will see **i-Smart icon** on the iPhone / iPod.



- 4) Click **i-Smart icon** to run program

## Operation Guide

### 1 Add Tab

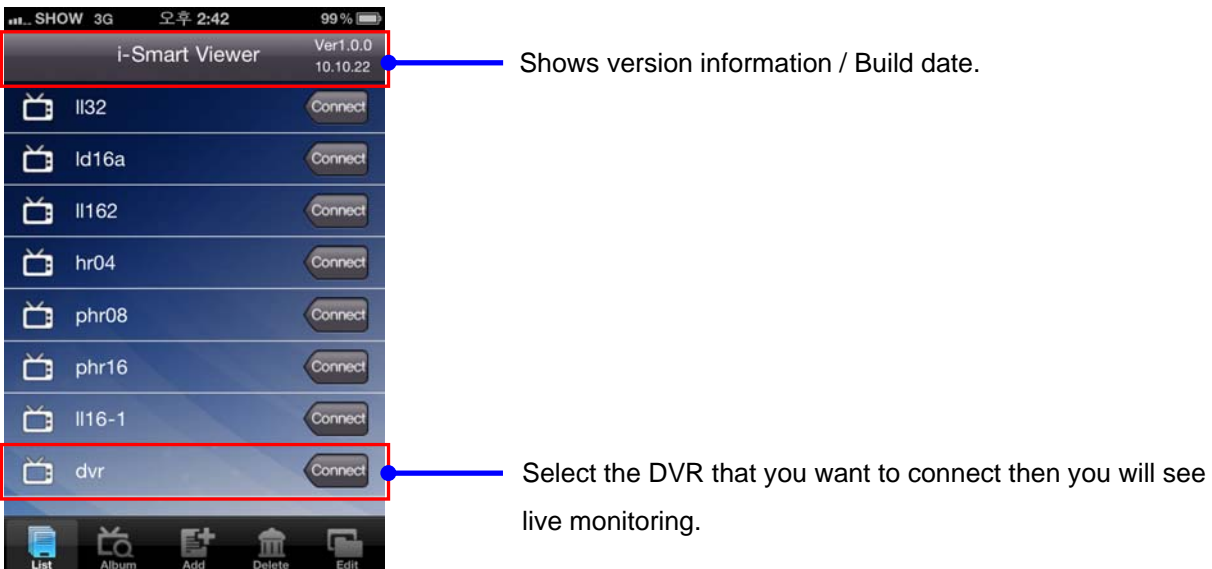


In ADD TAB, you add the DVR information to access to the DVR

- 1) Select “ADD” tab > Input data information
- 2) Click “ADD” button on the upper right area
- 3) Select “OK” to register DVR.
- 4) Select “List” tab to find added DVR

### 2 List Tab

In LIST TAB, you select the DVR to connect remotely



### 3. Live View / Toolbar

**Move Back to DVR List**

**Shows Camera name**

**Display Live Screen**

- Drag screen to move channel
- (Drag to left: move to next channel)
- (Drag to right: move to previous channel)

**Control Bar**

- If PTZ camera is connected, PTZ icon and control icon will be enabled.
- (Whenever you touch control icon, it shows "Zoom > Iris > Focus > Speed")



Shows registered DVR name

Click the arrow button to select the Camera, and press the Camera name in the middle to call the camera selected.

If PTZ camera is connected, advanced PTZ camera menu will be shown as below



[Basic menu]



[Advanced PTZ control menu]



Channel selection mode can be enabled from PTZ control mode



Select Screen Division



Snapshot: Save still image (Saved image can be load on the "Album" tab)



PTZ mode On/Off: Enables to control Pan, Tilt, Zoom, Iris, Preset and Tour.



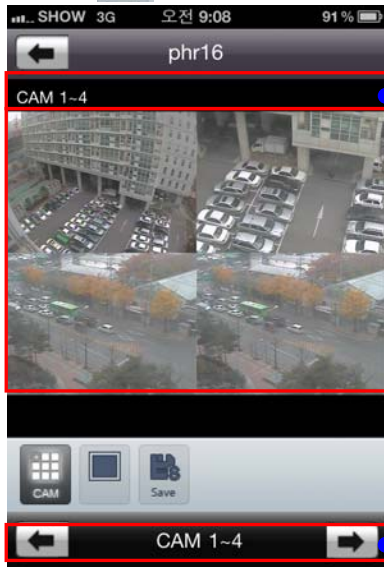
Select Zoom, Iris, Focus, Speed control



Select Preset, tour control

### 4. Screen Division mode (1 / 4)

Touch  icon to select screen division (Switch screen division mode between 1CH, and 4CH mode)



**Camera Information**

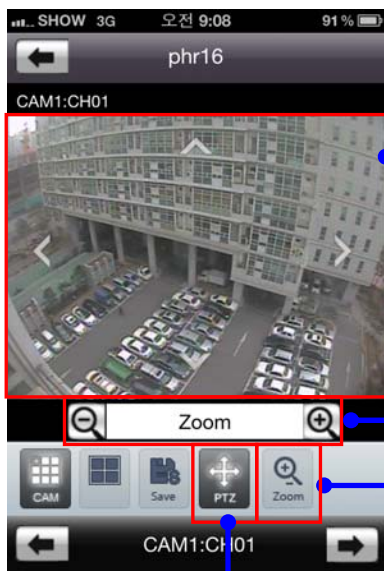
**4 Channel mode**

- Drag screen to Left / Right : move to next / previous 4 cameras
- Touch channel to enlarge the selected camera as 1CH mode.

**Camera Information**

Click the arrow button to select the Camera, and press the name in the middle to call the camera selected.

### 5. Pan, Tilt, Zoom, Iris, Focus, Speed Control



**Pan / Tilt Control**

- Touch arrow on the screen to control : Up / Down / Left / Right

**Zoom / Iris / Focus Out and In**

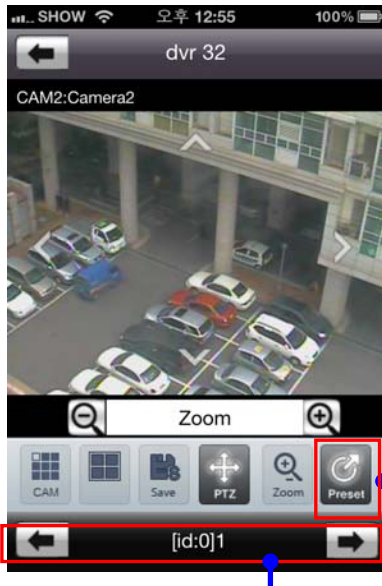
**Zoom / Iris / Focus / Speed mode**

Whenever touch this icon, it switches between Zoom / Iris / Focus / Speed

Select PTZ mode



### 6. Preset / Tour Control



**Select Preset / Tour mode**

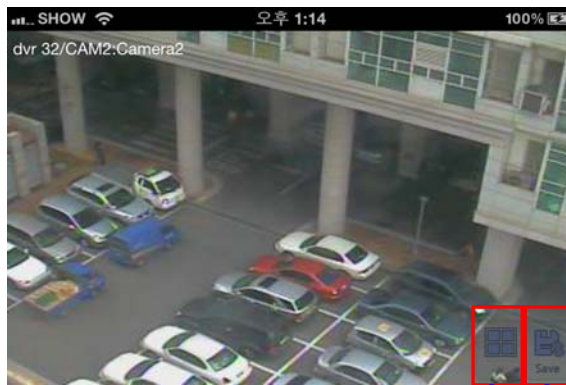
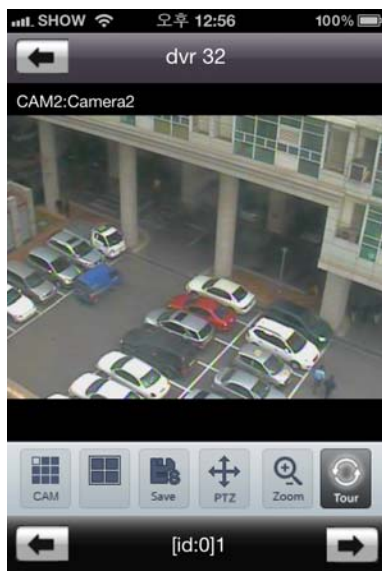
When preset or tour is set on the DVR, this icon will be activated.

#### Camera Information

Click the arrow button to select the Camera, and press the name in the middle to call the camera selected.

### 7. Full Screen mode

Rotating the device (iPhone/iPod), it will change as full screen mode

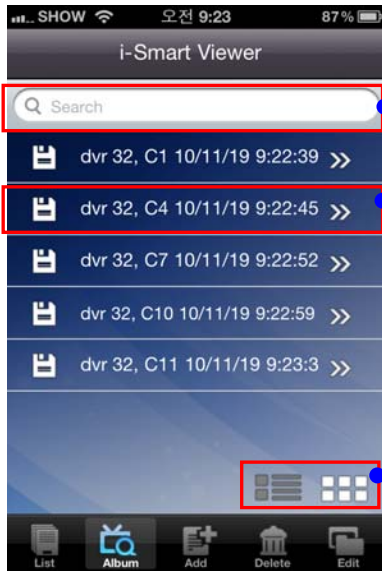


**1 / 4 Channel Screen division**

**Snapshot: Save still image**

### 8. Album Tab

Use Album Tab to view the saved still image from snapshot function.



Search Image  
by file name

Saved file list  
(Shows DVR name, camera number,  
YY/MM/DD Hour:Min:Sec)

Switch to List mode  
/ Thumb Nail mode

[List mode]



[Thumbnail Mode]

### 9. Delete Tab

Use Delete tab to delete the DVR from the registered list.



Search DVR  
from list

Select DVR to delete

Delete selected DVR

Select all DVR



Touch OK to delete DVR



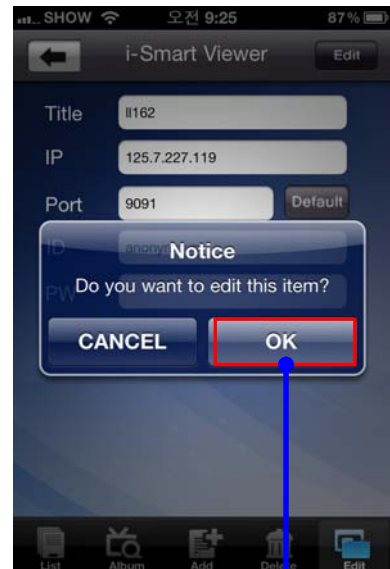
### 10. Edit Tab

Use Edit Tab to edit the DVR information.



Search DVR from list

Select DVR to edit.



Touch OK to save modified information

## BLACKBERRY

### Software Installation

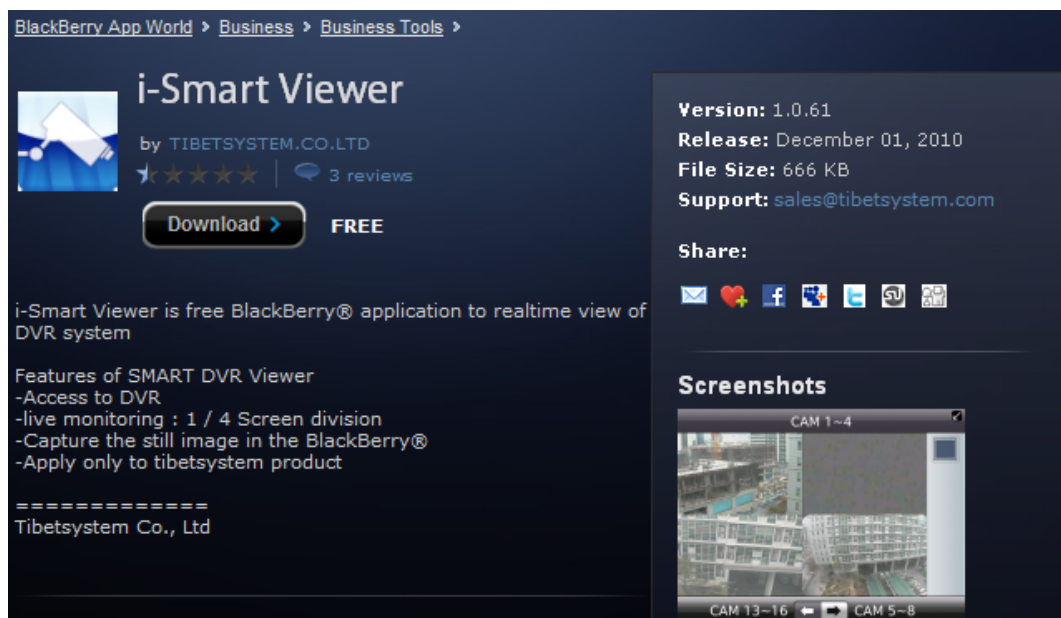
#### 1. Installing i-Smart Viewer through AppWorld (PC/MAC)

1) On the PC web browser,

Visit <https://appworld.blackberry.com/webstore/content/18458>

Or find software in the BlackBerry AppWorld by search: i-smart viewer.

2) You will see the web page below and click « **Download** » to install i-Smart Viewer application to Blackberry phone.



3) After installing the application, you may need to configure APN setting to get video through 3G access.

## 2. How to configure APN setting on Blackberry.

To get video data through 3G access, you need to configure APN setting.

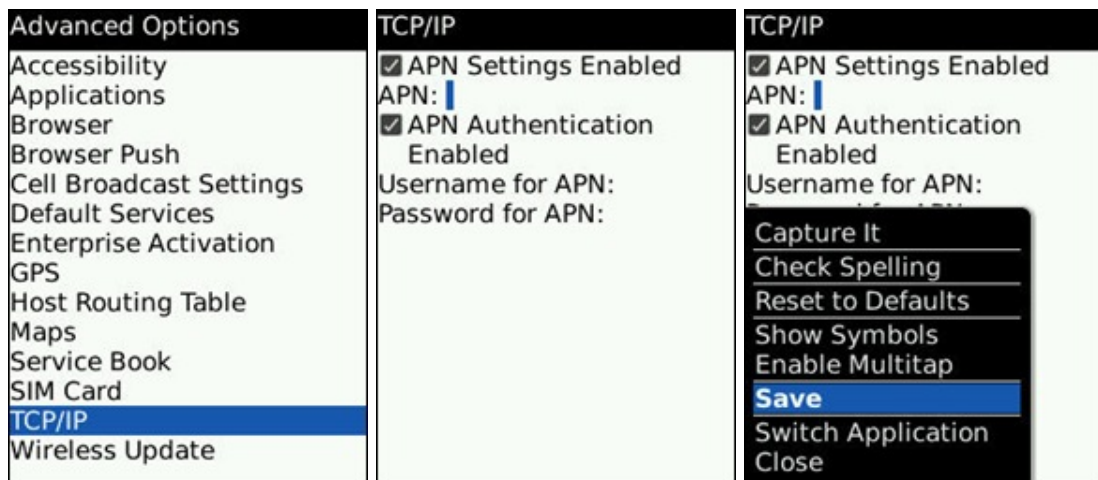
Before you start configuring APN settings, you will need the following information from your wireless carrier:  
**APN, username and password.**

It may happen that the username and password of your particular wireless service provider is not set, in that case just leave in blank.

For example, T-Mobile: APN= wap.voicestream.com, Username: [blank] , Password: [blank]

Rogers: APN=internet.com, Username=wapuser1, Password=wap

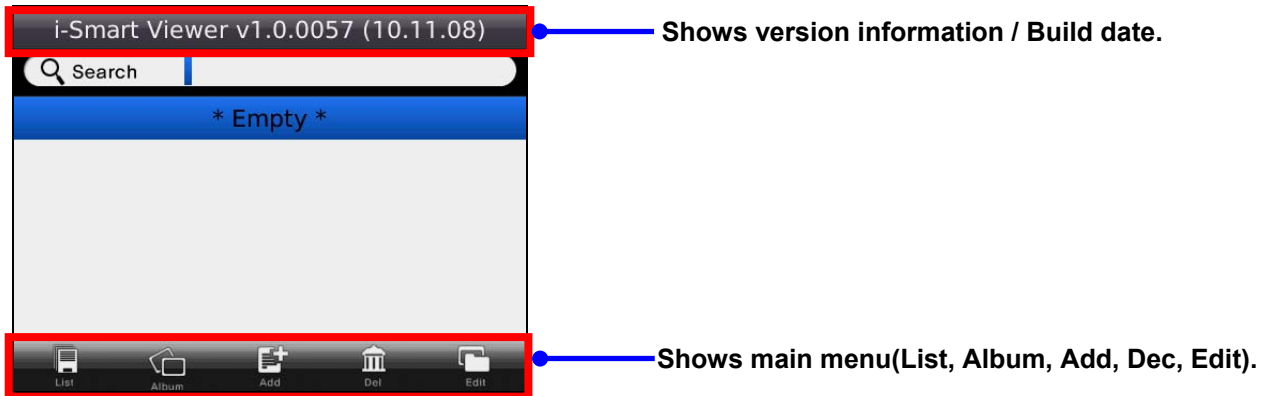
Check out [this](#) link, it may have APN settings for your service provider or contact your wireless service provider to obtain this information.



- 1) On Home screen, click **Options**.
- 2) Click **Advanced Options > TCP**
- 3) Enter the APN, user name, and password
- 4) Press the Menu key and select **Save**

## Operation Guide

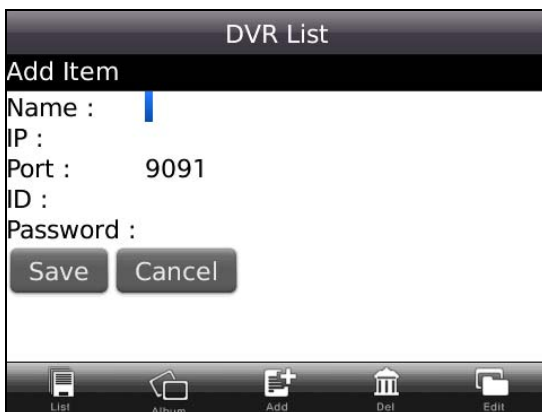
### 1) Main screen



Main screen displays list of DVR added. It is possible to search the DVR by Search menu on top.

1. **List**: List of DVR added.
2. **Album** – Captured images from DVR
3. **Add** – Add DVR to the List
4. **Del** – Delete DVR from the List
5. **Edit** – Edit DVR information

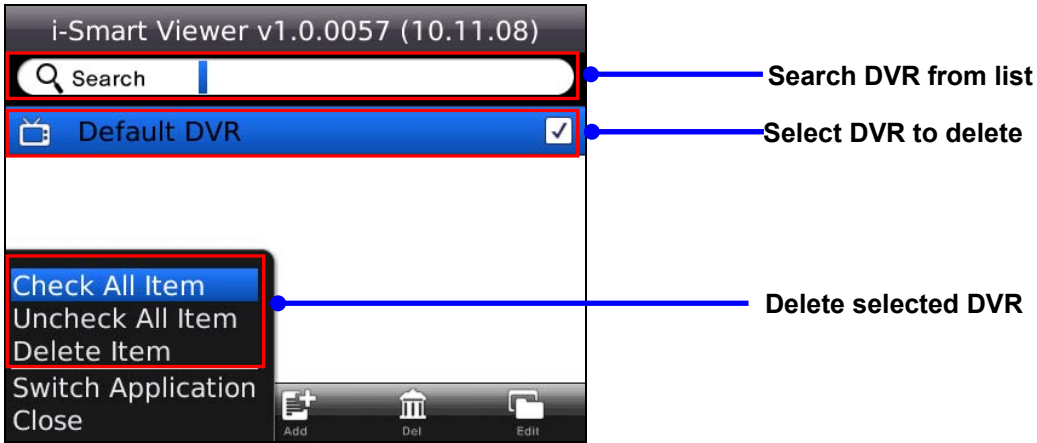
### 2) Add DVR



Use Add tab to add DVR information to List.

1. Select "Add" button > Input DVR information > Select "Save" button to register DVR.
2. Select "List" tab to find added DVR

### 3) Delete DVR

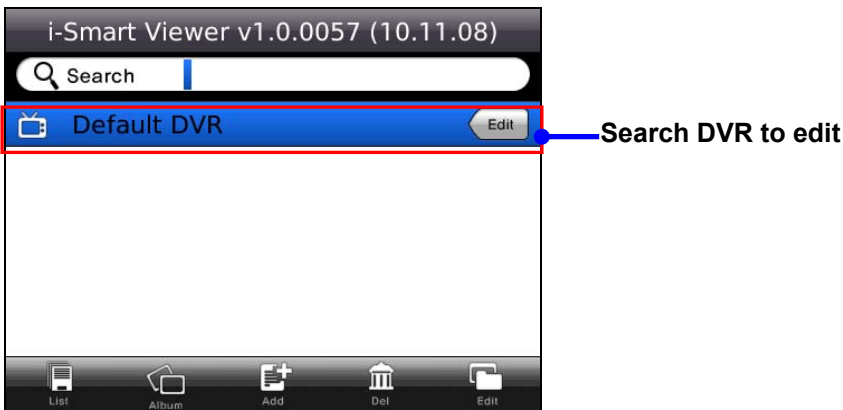


Use Del tab to delete DVR from the list.

1. Select DVR from the list
2. Push MENU button to open menu
2. Select desired menu option to proceed

### 4) Edit DVR

Use Edit Tab to edit DVR information. Press Edit button to go to Edit menu.

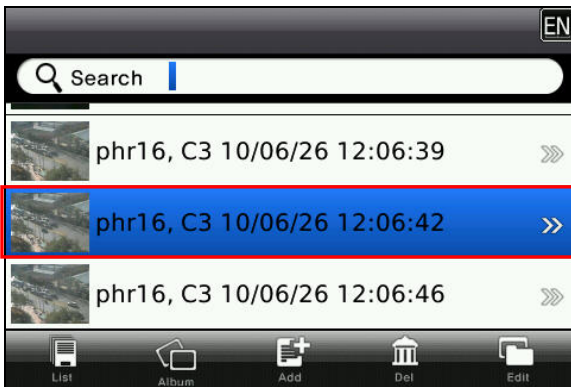




Select Modify to save changes

### 5) Album

Use Album Tab to view saved image from snapshot function.



Saved file list (Shows DVR name, camera name, YY/MM/DD Hour:Min:Sec)

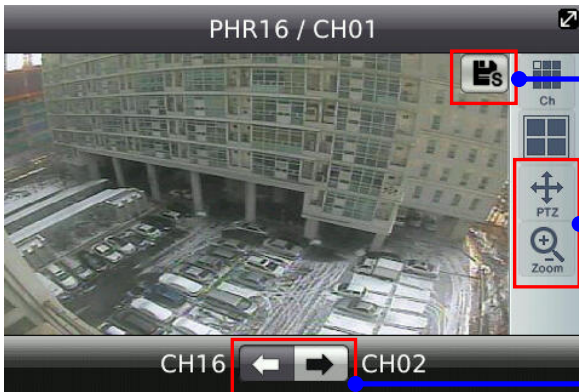
Press button to show full size of image as below



Press ← or → button to show next or previous



### 6) Live View / Toolbar



Save still image (Saved image can be load from "Album" tab)

PTZ camera menu will be shown if PTZ camera is connected.

Select camera by push arrow button.



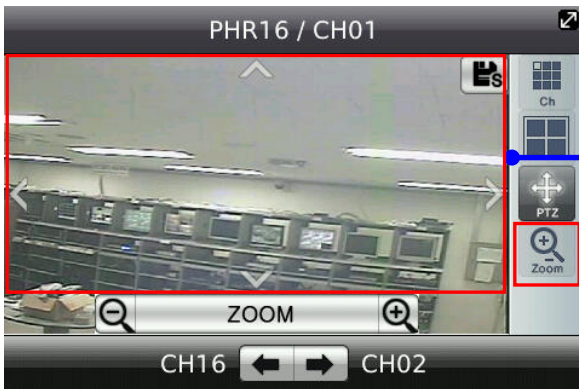
Enables camera selection mode

Select Screen Division

PTZ mode On/Off

Select Zoom / Iris / Focus / Speed / Preset / Tour control by press repeatedly

### 7) Pan, Tilt, Zoom, Iris, Focus, Speed Control



Pan / Tilt Control

- Press arrow on the screen to control: Up / Down / Left / Right

Zoom / Iris / Focus / Speed / Preset / Tour mode

- Switch mode to Zoom / Iris / Focus / Speed / Preset / Tour



Select Preset / Tour mode

-When preset or tour is set on the DVR, this icon will be activated.

Preset information

-Change preset by pressing arrow button.

## **Symbian APP**

### **Installing i-Smart Viewer through PC**

- 1) Go to [www.eyemaxdvr.com](http://www.eyemaxdvr.com)
- 2) Download "Symbian app" zip file to PC.
- 3) Unzip "Symbian app ... zip file then 3 files will be extracted: **qt\_installer\_sis**, **qtmobility\_sis** and **i\_smart.sis** file.
- 4) Connect your Symbian phone to PC
- 5) Copy three files to Symbian phone
- 6) Run "file manager" (file explorer) to install all 3 files.  
(**Install qt\_installer and qtmobility first and then install i\_smart**)
- 7) Run "Smart" application from Symbian phone.