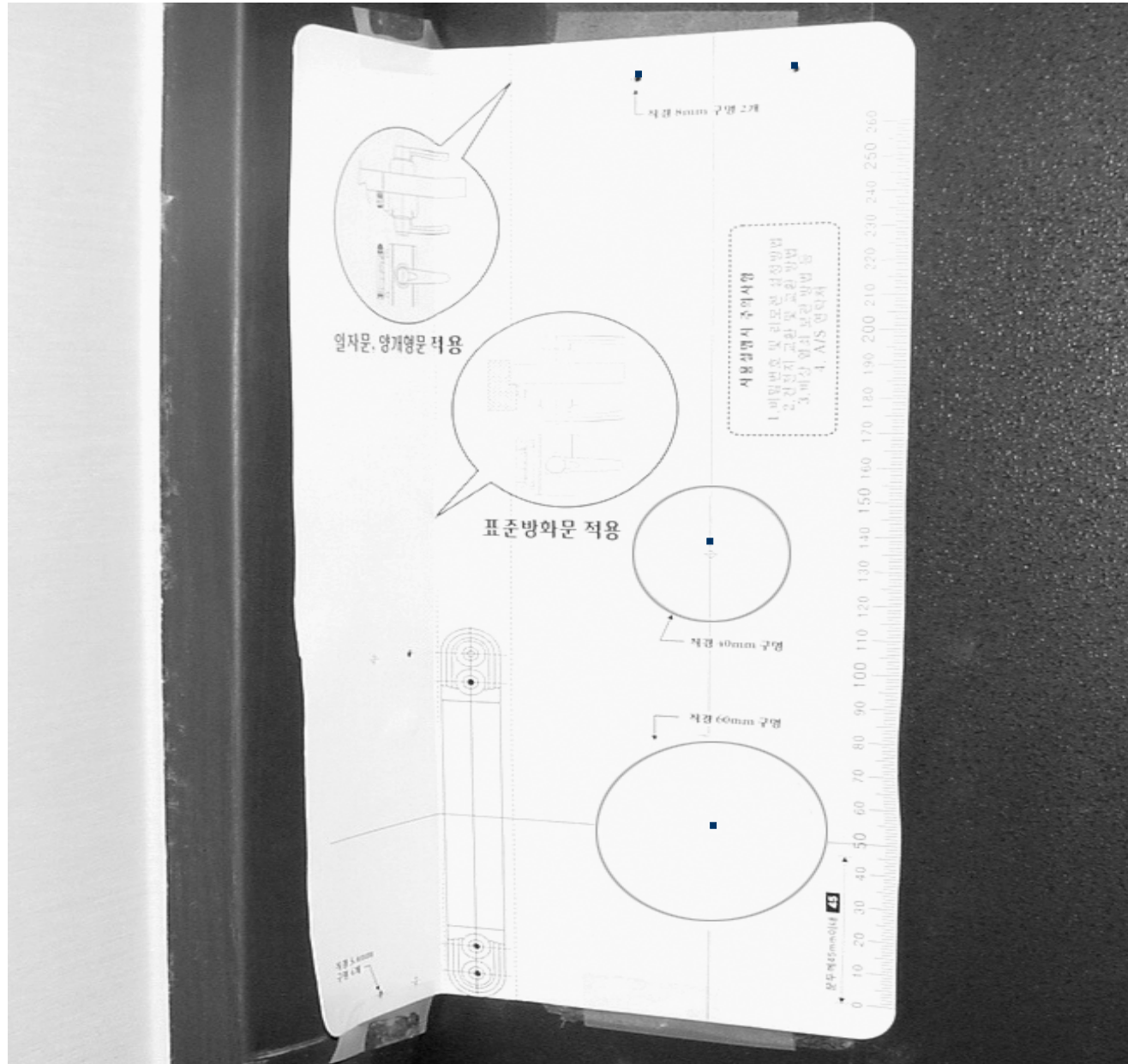
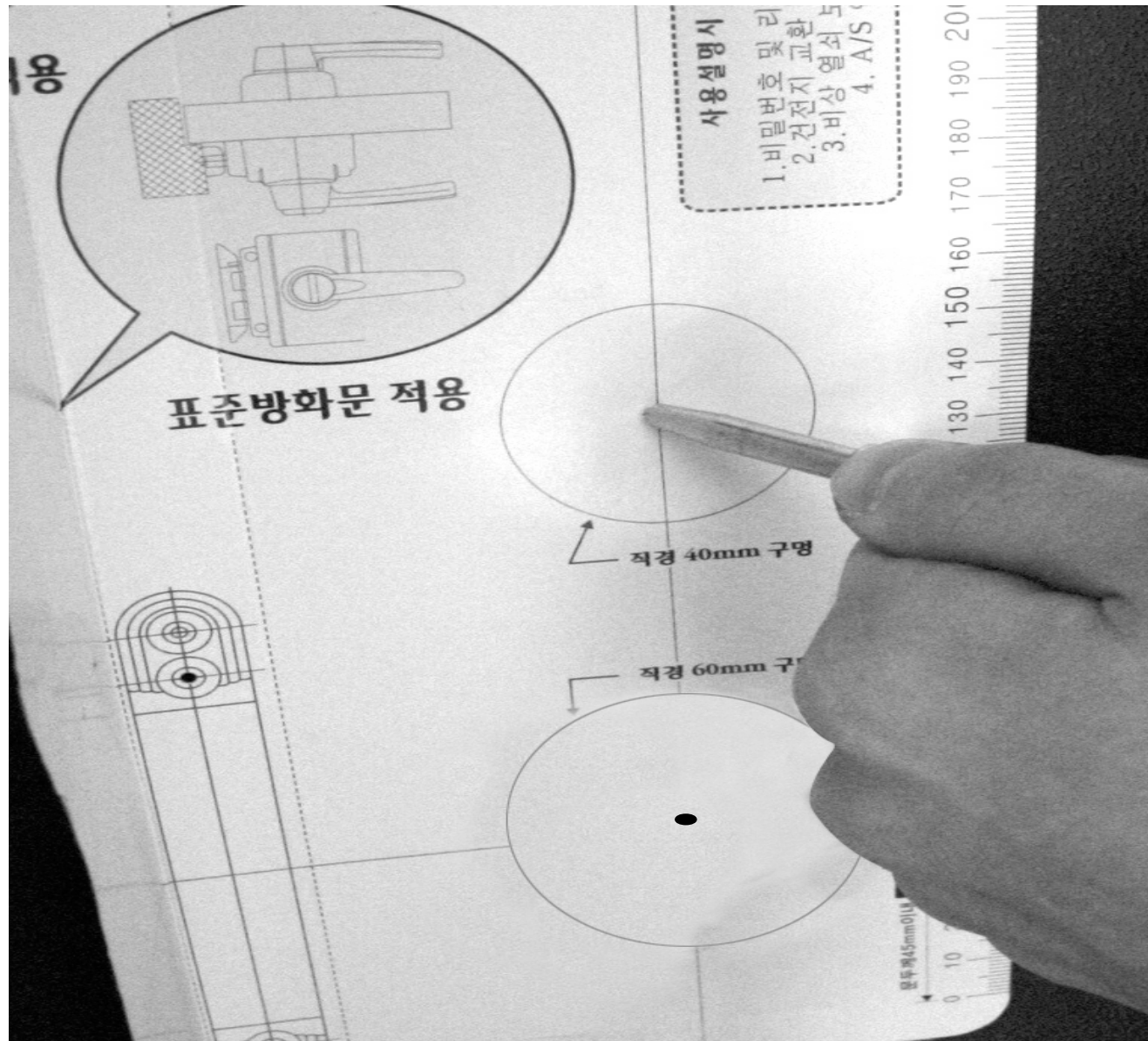


*Installation Guide*  
*for*  
*Fingerprint Door Lock*  
**VIRDI 400FP**

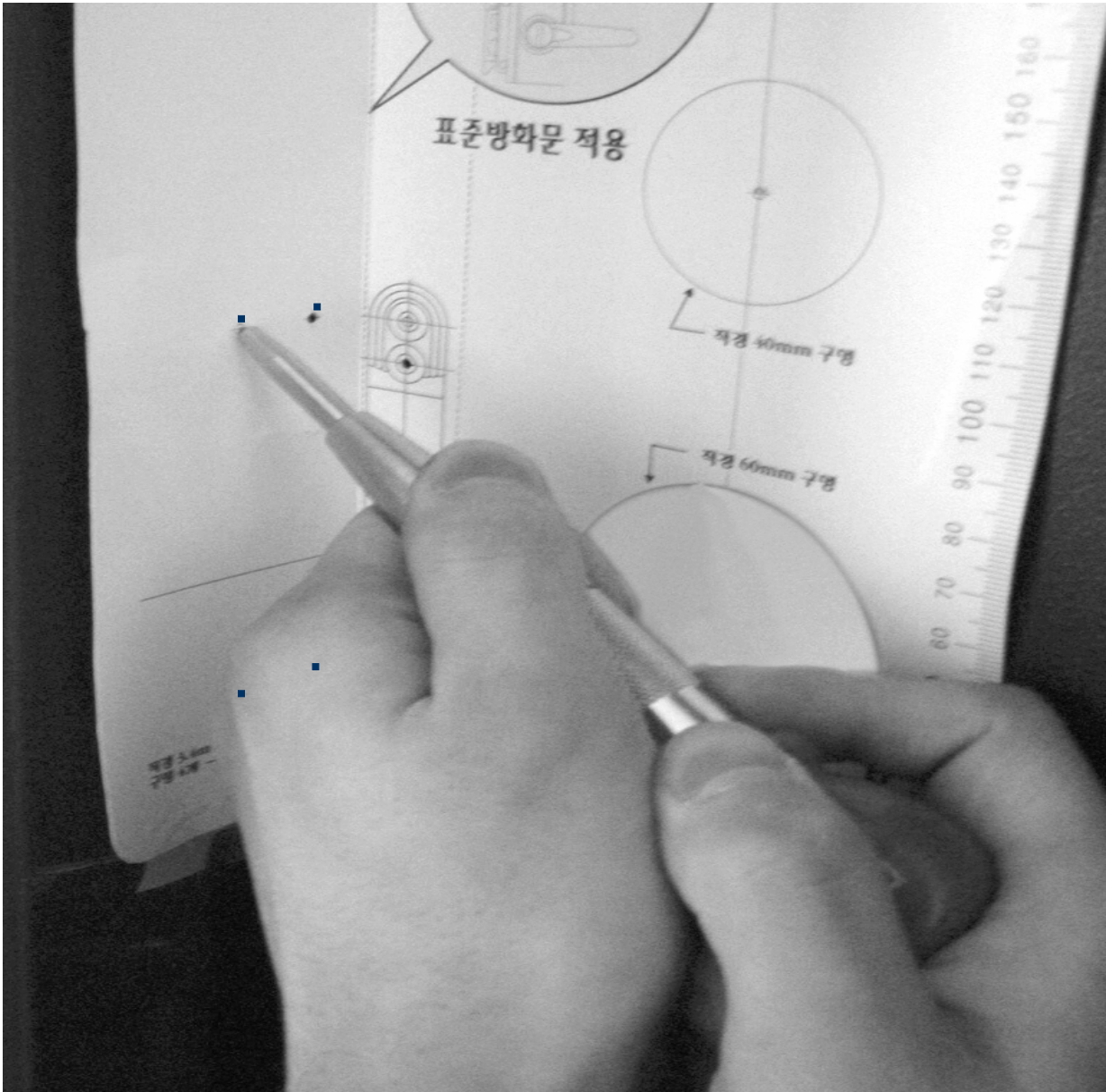
1. After check up the door handle direction (left use or right use), temporarily adhere it at the door.



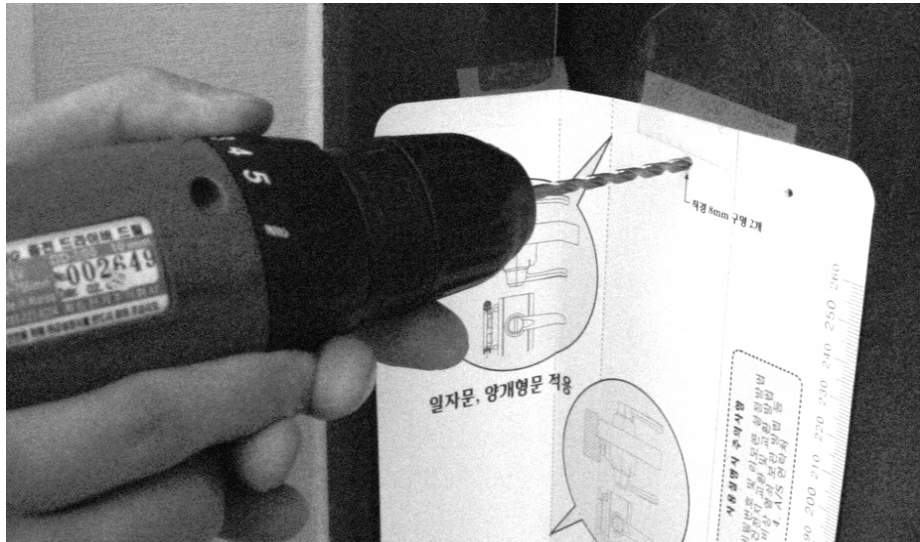
## 2. Marking 4 points for body using the installation guide paper.



3. Marking 4 points for lock strike using the Installation guide paper.



#### 4. Piercing the marked points on the door with drill.



5. Completed figure of the piercing.





6. Install the front body into the hole after input the cable to the inside.

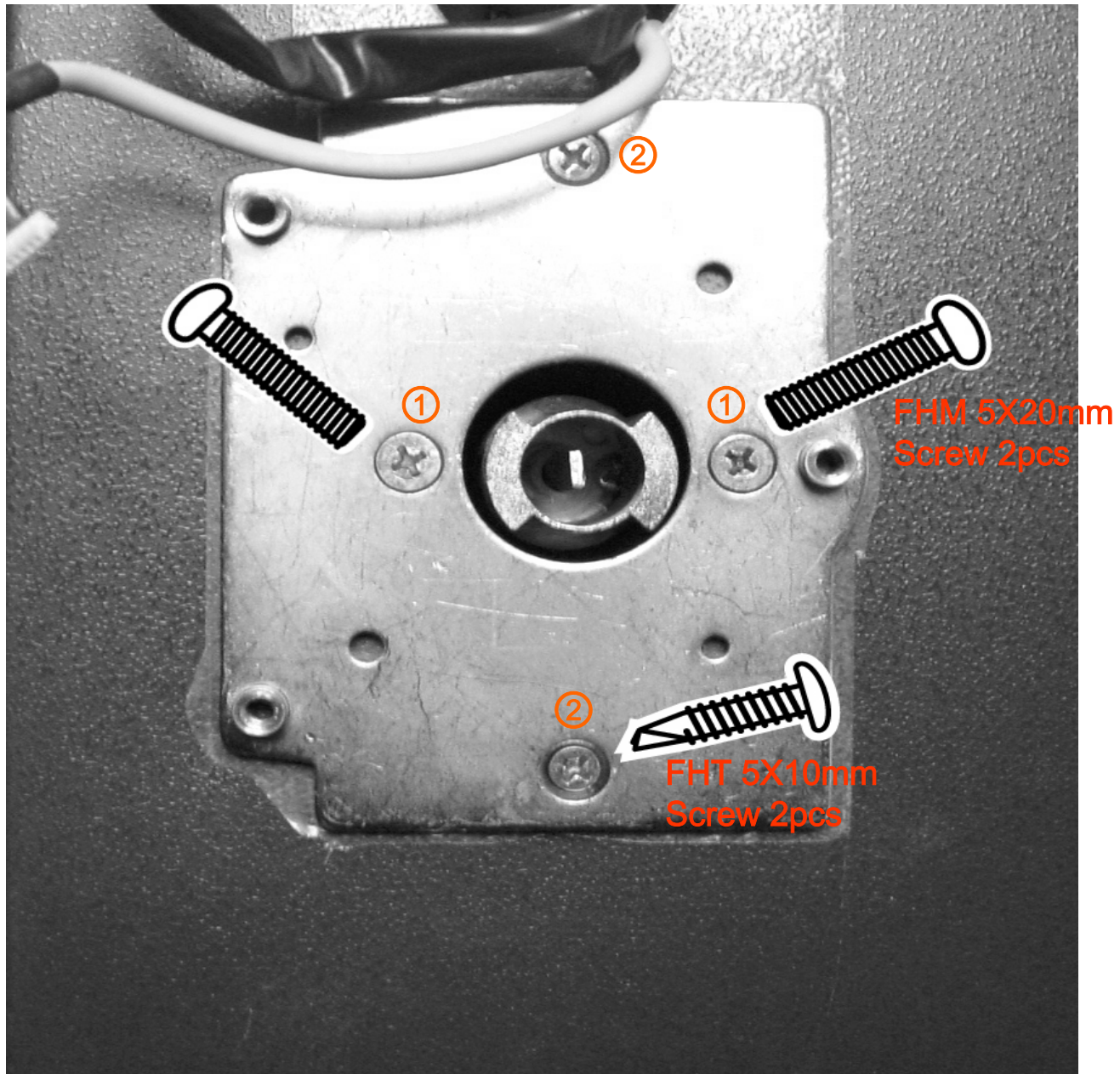


7. The picture of inside door after install front body into the hole.

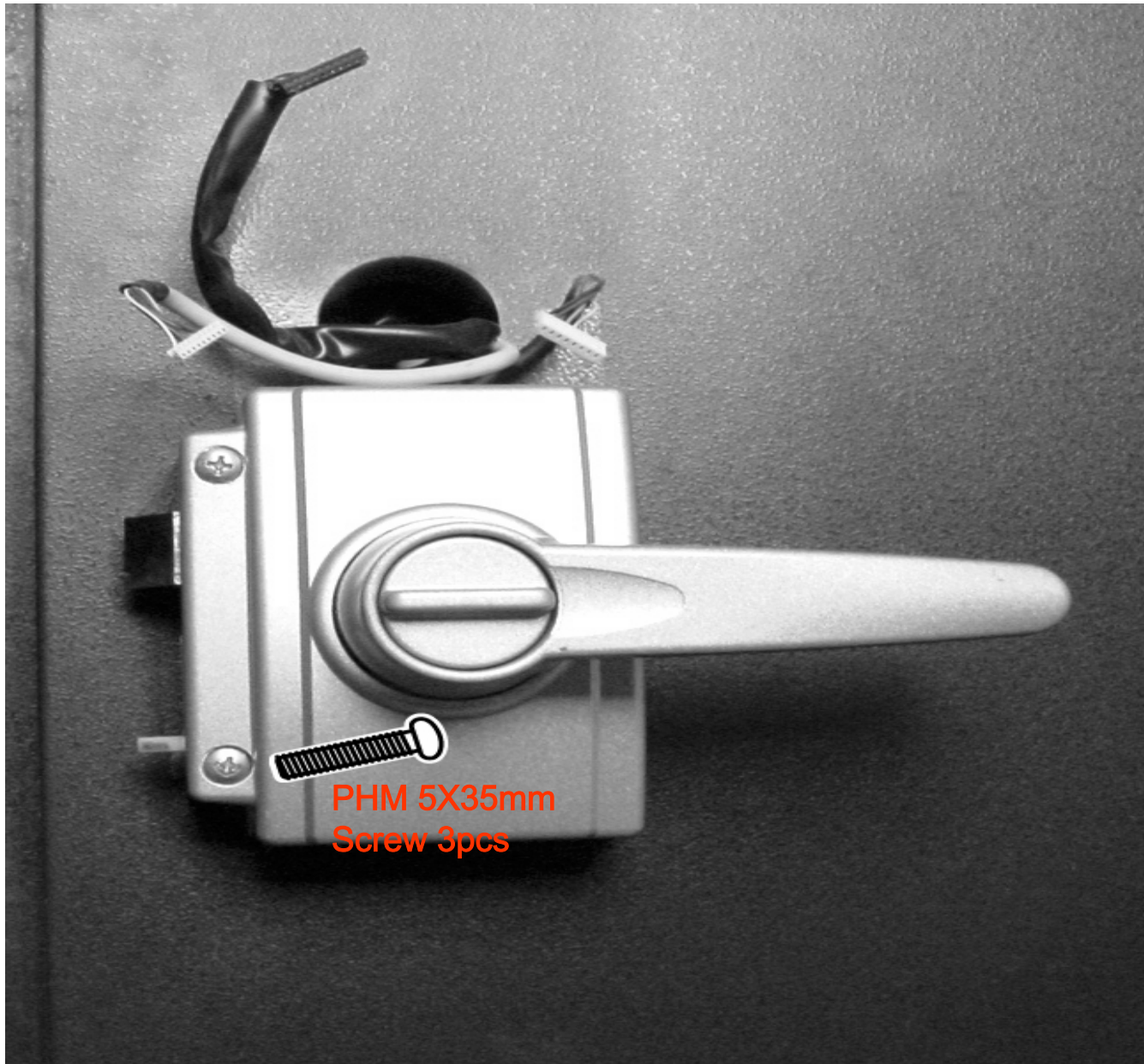




8. Combine the inner plate to front body with screw ① and ② for fixing up.

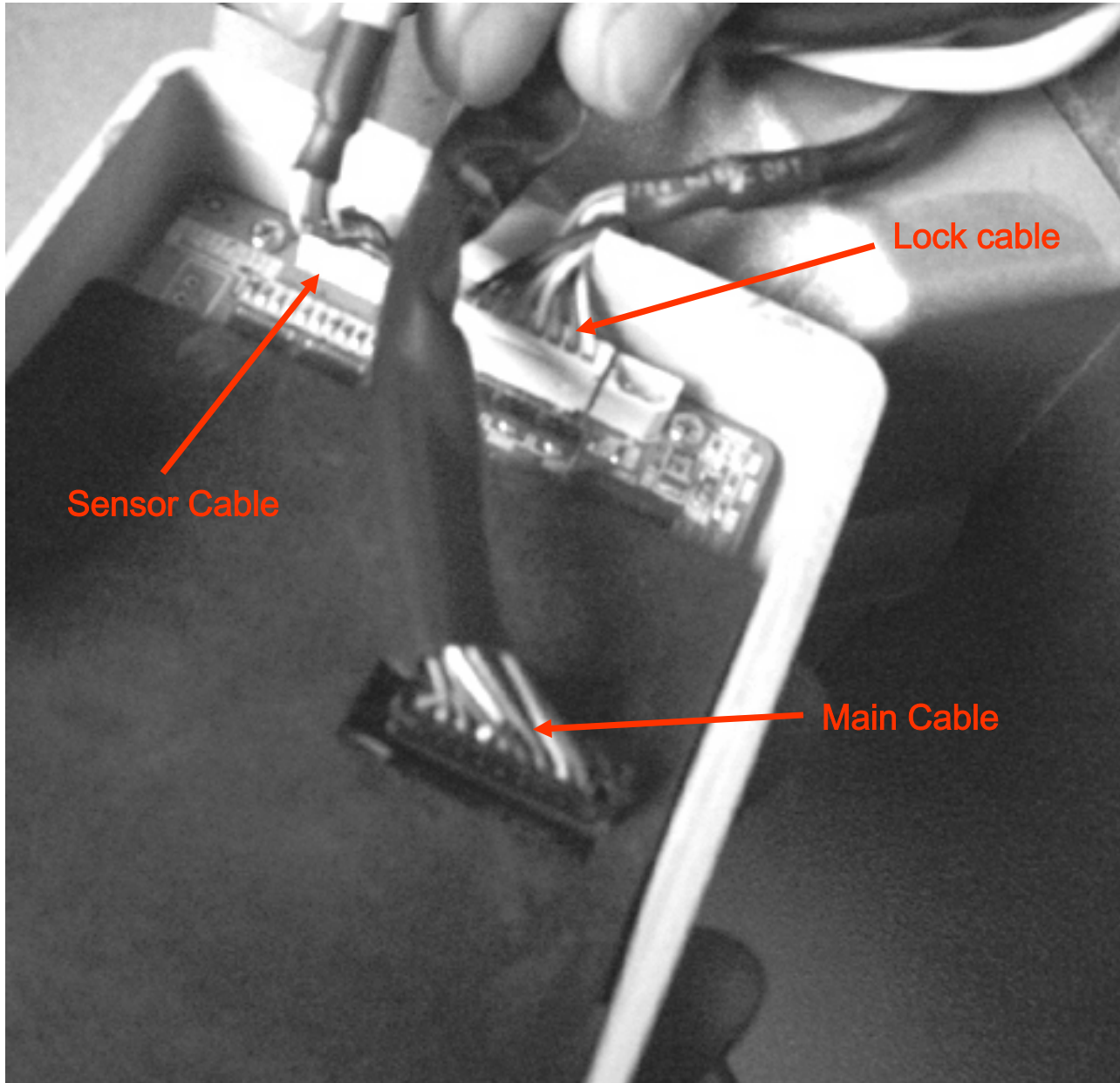


9. Interior lock part is fix up with screws (3pcs).



PHM 5X35mm  
Screw 3pcs

10. Connect cables at a Main board.





11. Fix up battery case with 2pcs of screws.



12. Lock strike is fixed up with 4pcs of screws.

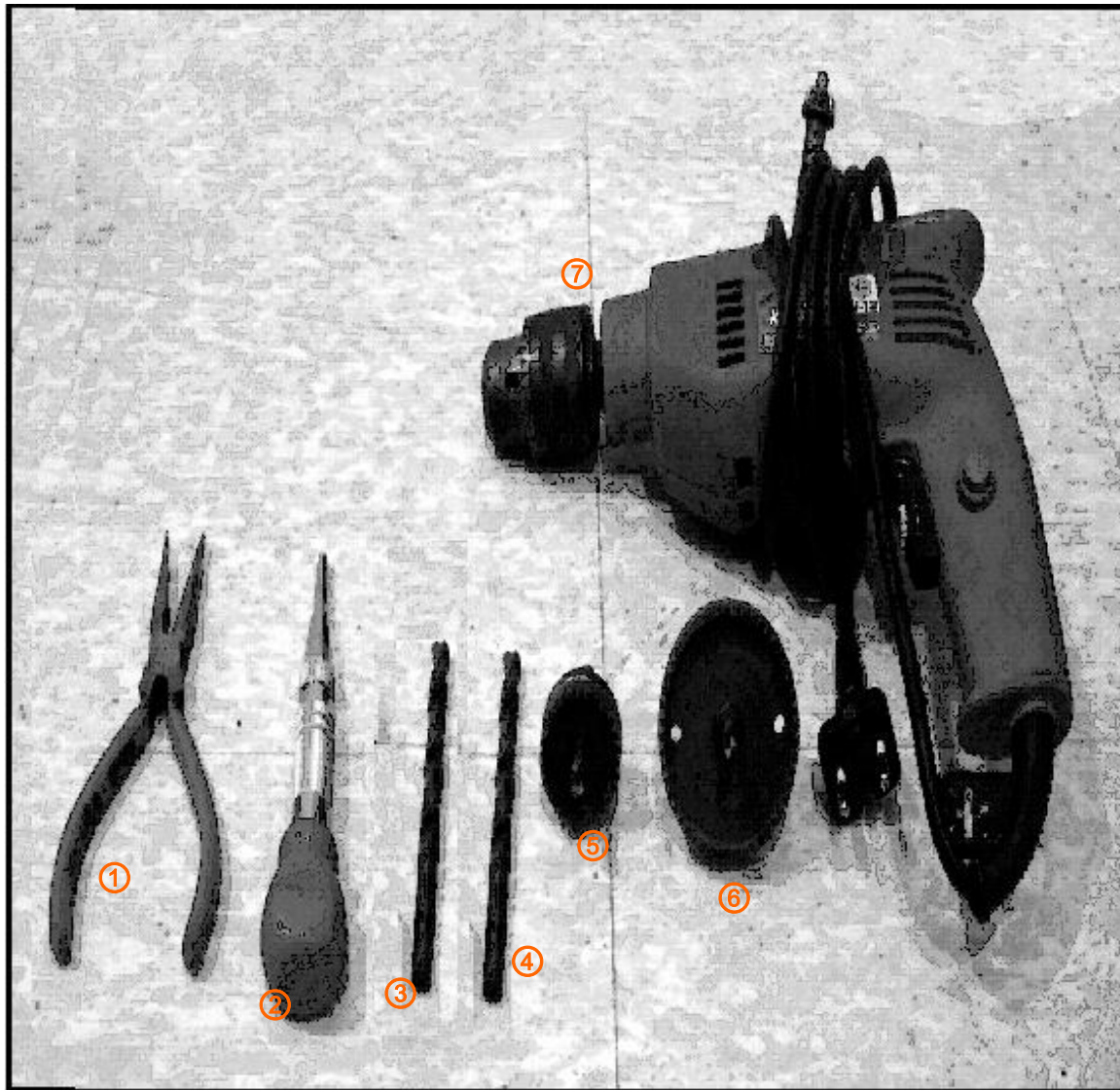


13. Input 8pcs of AA Size Batteries with right polarity in the battery case.





## 14. Installation tools.



1. Long nose Pliers
2. Punching tool
3. 3.4mm drill tip
4. 8mm drill tip
5. 40mm hole cutter
6. 60mm hole cutter
7. Electrical drilling machine